

321EXCHANGE

±72,000 - 305,760 SF
FOR LEASE OR FOR SALE

1925 WREN TURNPIKE
GASTONIA, NC



CONSTRUCTION STATUS

- SITE CLEARED
- PAD COMPLETE
- WALLS TILTED
- ROOF INSTALLED
- BUILDING DELIVERED



FOUNDRY | CROW HOLDINGS
COMMERCIAL

BUILDING FEATURES & ACCESS

ADDRESS 1925 WREN TURNPIKE
GASTONIA, NC

SIZE ±305,760 SF

CLEAR HEIGHT 36'

DOCK HIGHS 65 (9'X10') WITH 20
PIT LEVELERS

DRIVE-INS 2 (14' X 16')

COLUMN SPACING 50' X 56', 60' SPEEDBAYS

SLAB 6" (4,000 PSI)

POWER TWO 2,500 AMP SERVICE TROUGHS

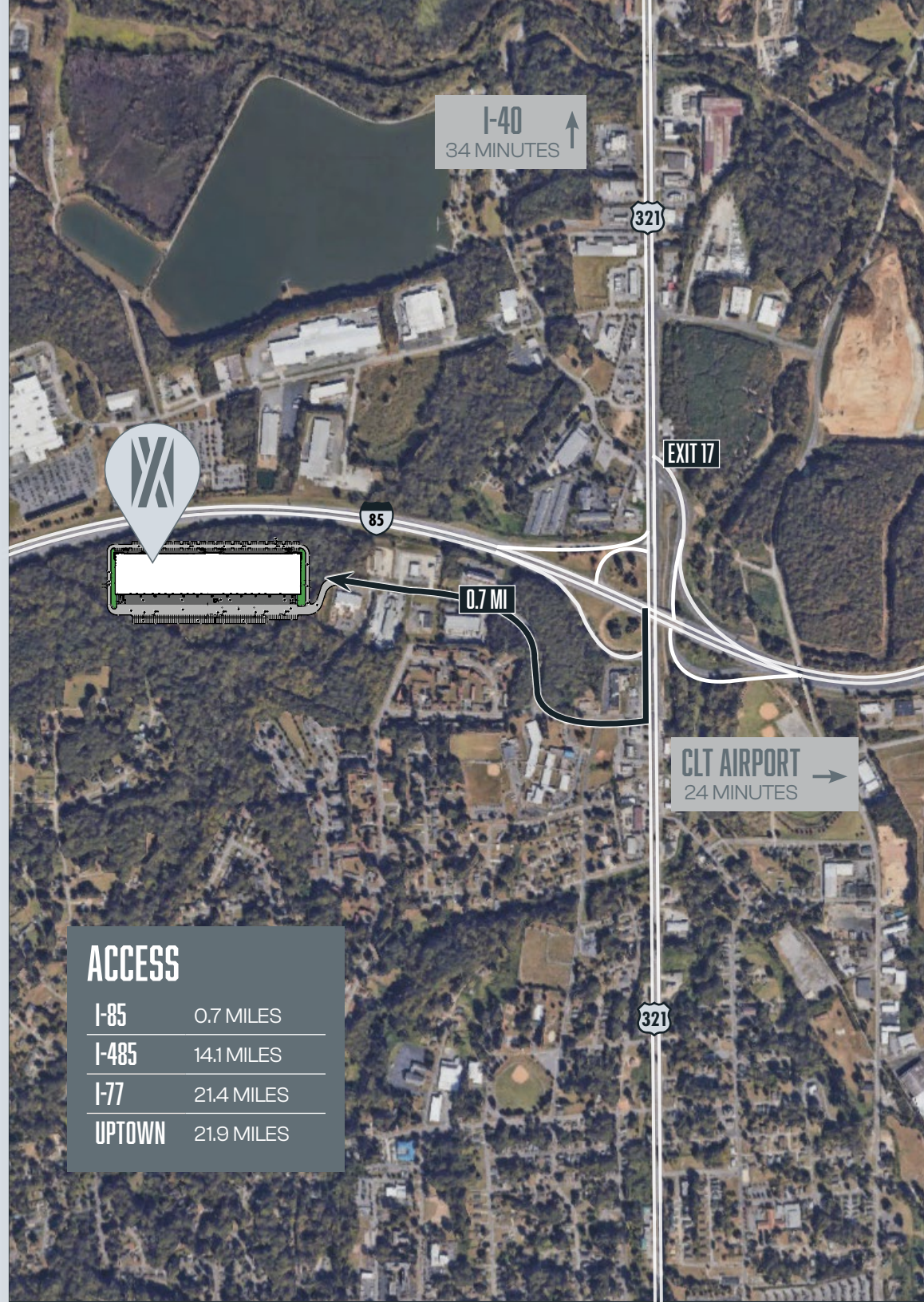
LIGHTING LED ON MOTION WITH 15' WHIPS

INTERIOR WHITE BOXED AND PAINTED COLUMNS

TRAILER STORAGE 70

VAN STORAGE 16

AUTO PARKING 236 SPACES

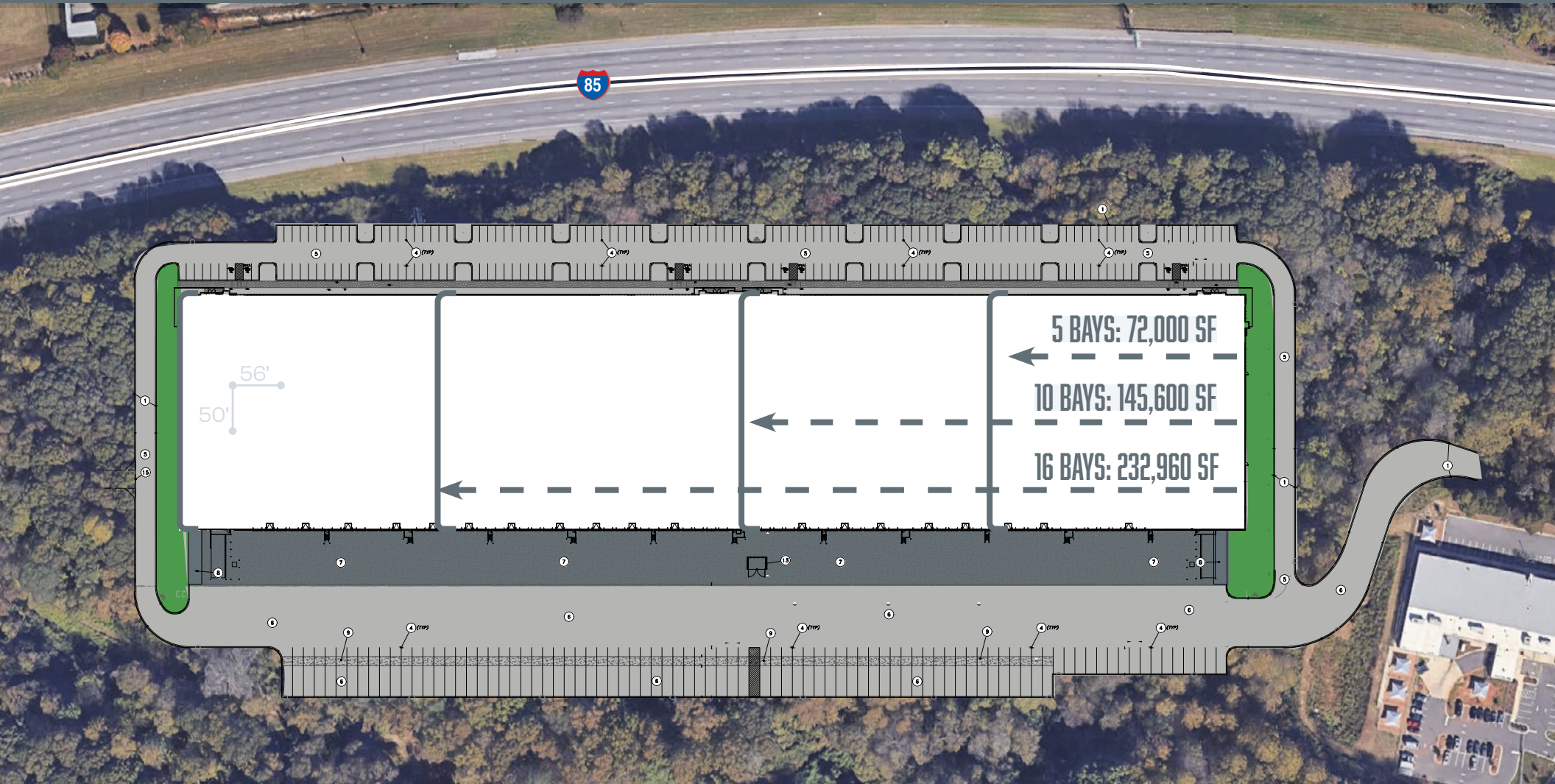


ACCESS	
I-85	0.7 MILES
I-485	14.1 MILES
I-77	21.4 MILES
UPTOWN	21.9 MILES

AREA OVERVIEW



SITE PLAN



±305,760 SF

SQUARE FEET

36'

CLEAR HEIGHT

65

DOCK DOORS

2

DRIVE-IN DOORS

260'

BUILDING DEPTH

185'

TRUCK COURT DEPTH

16

VAN PARKING

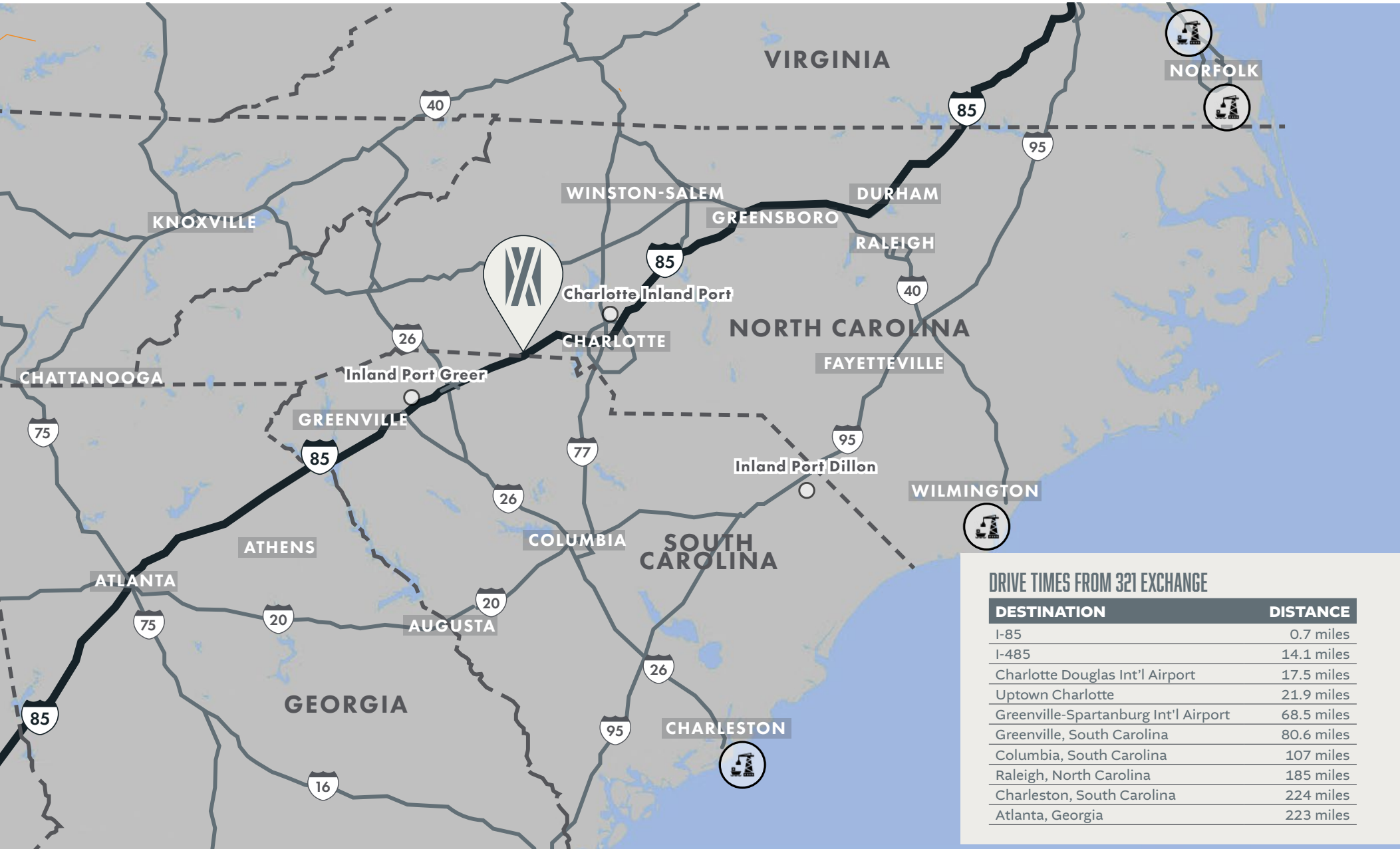
70

TRAILER PARKING

236

AUTO PARKING

REGIONAL CONNECTIVITY



CONTACT US

WARREN SNOWDON, SIOR
MANAGING DIRECTOR | PRINCIPAL
warren.snowdon@foundrycommercial.com
704.965.1178

BEN ROWELL
VICE PRESIDENT
ben.rowell@foundrycommercial.com
704.319.5080

321EXCHANGE

FOUNDRY | CROW HOLDINGS
COMMERCIAL

