

127

West Street Road #B2

Kennett Square, PA 19348



CONTACT

Daniel Robins-Broker-Owner
610-656-6288
DanielRobins@DanielRobinsGroup.com
Lic. #RM423168

RE/MAX DIRECT
610-430-8100
Remaxdirectwc@gmail.com
Lic. #RB068340



THE OFFERING

This Upper-Level Office Condominium is available immediately. Located within the Willowdale Crossing Center, this commercial suite features 2 Restrooms, an executive office, and mainly open layout. Elevator serviced. Ample on-site lot parking. Well-appointed in the professional/business area of Unionville, just north of Historic Kennett Square. Professional neighboring businesses include Hendrix Orthodontics, Medical Offices, Medical Specialists, and Dental Professionals. Unionville area features an award-winning school district, fine restaurants, cool coffee shops and bistros, professional services, Kennett Golf and Country Club and financial institutions. This is a great area to simply invest and/or for your business to grow and thrive. The lower level with the same amount of square footage recently sold for \$1,150,000.



PROPERTY HIGHLIGHTS

This professional office is available immediately. Located within the Willowdale Crossing Center in the well-appointed professional/business area just north of Historic Kennett Square. Professional neighboring businesses include Hendrix Orthodontics, Medical Offices, Medical Specialists, and Dental Professionals. Unionville area features an award-winning school district, fine restaurants, cool coffee shops and bistros, professional services, Kennett Golf and Country Club, and financial institutions

- Executive Office
- Ceiling Fans
- Elevator Service
- Digital Thermostat
- Open Floor Plan
- Ample On-Site Parking



PROPERTY SUMMARY

Property Address	127 W Street Rd. #B2 Kennett Square, PA 19348
Price	\$595,000
Building Type	Office
Year Built	2004
Property Size	4,680 Sq Ft
Building Class	B
Parking Spaces	45

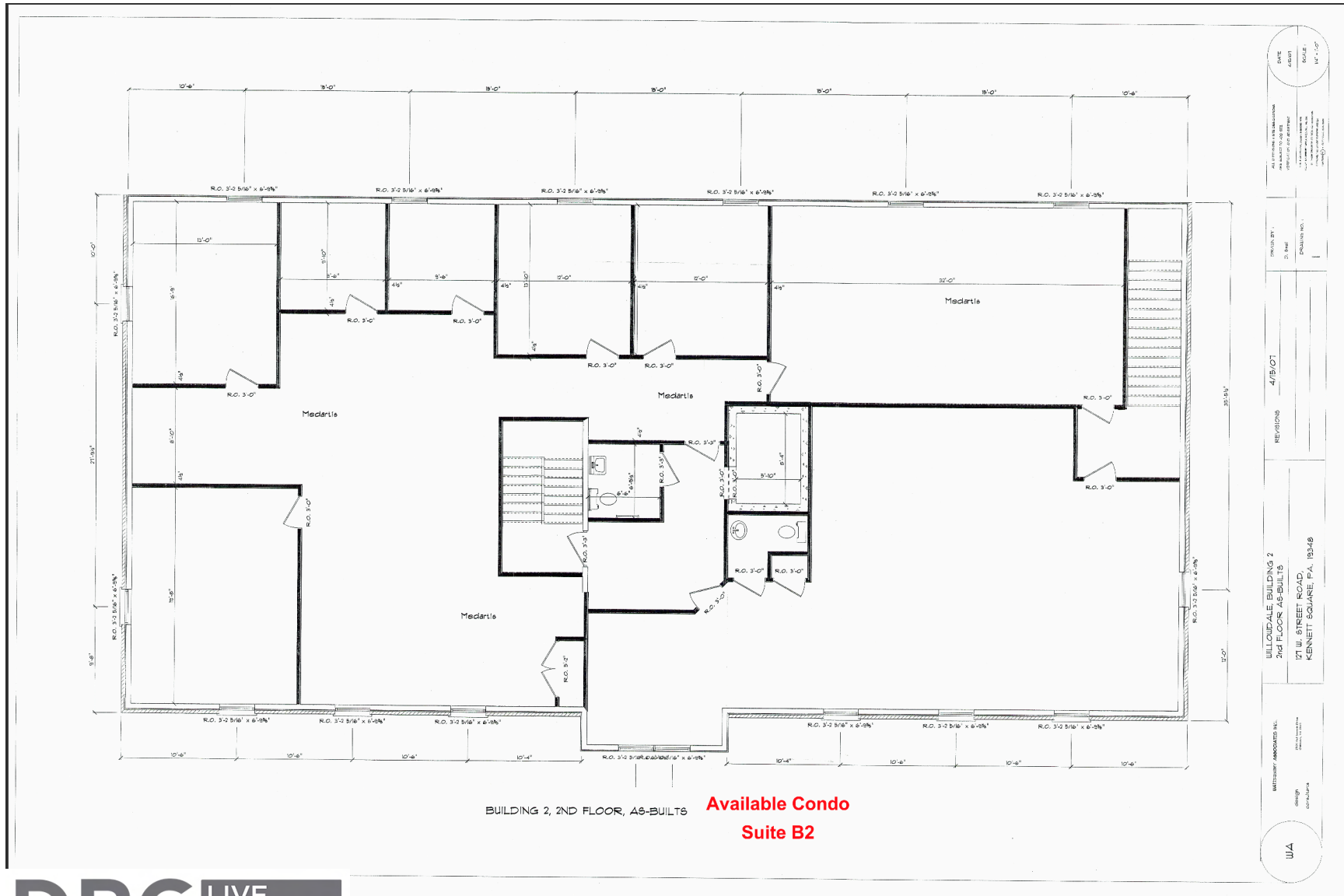




2ND LEVEL **OFFERED** AT \$595,000

1ST LEVEL **SOLD** FOR \$1,150,000

SITE PLAN



AREA OVERVIEW

A charming borough with a welcoming feel, Kennett Square, Pennsylvania, is nestled in the rolling hills of Chester County's countryside. The town has been in existence since before the Declaration of Independence was signed, and its downtown now is part of the National Register of Historic Places with 507 protected buildings built between 1875 and 1924 and in a variety of popular architectural styles including Colonial Revival, Victorian, and Federal. A town with a true sense of community and a steady calendar of events, Kennett Square itself is also enjoyed after visits to nearby Longwood Gardens.



QUICK FACTS

Size:	1.07 sq. mi.
Population:	5,982
Estimated Median Age:	38.7 years
Median Household Income:	\$70,903
Median Property Value:	\$328,200
Number of Employees:	3,027



CONTACT

Dan Robins, Broker-Owner
610-656-6288
DanielRobins@DanielRobinsGroup.com

Hannah Benedict, Team Manager
484-356-5340
HannahBenedict@DanielRobinsGroup.com

RE/MAX DIRECT
RESIDENTIAL COMMERCIAL REALTY

RE/MAX Direct
301 S. High St. Suite 100, West Chester, PA 19382
610-430-8100 | WCDirectRealEstate.com

