

Clarus Center – Join our Community

I-88 and Diehl Roads in Warrentville

**Private and Shared Office Space Available, Full and Part Time Leases
Immediate Occupancy, Reasonable Rates**

An Integrated Health and Wellness Center

*Ready for a beautiful
office at a great price?*

Overview

Clarus Center is a vibrant community of health and wellness professionals who have come together to create a space for wellness. We're expanding our reach and are actively looking for more community members!

- Medical Professionals
- Psychiatric and Psychology Practitioners
- Lawyers
- Financial Planners
- Consultants
- Marketing Firms
- Accountants
- Business Services

A Community Approach to Wellness

www.claruscenter.com



Key Features

- Furnished options available
- Very high quality construction and furnishings
- Elegantly appointed private offices
- Shared reception area
- Reasonable rates, flexible terms
- Plenty of parking
- Includes meeting/event space and full kitchen
- Close to many business and personal amenities
- Proactive collaboration with other like-minded professionals
- Business marketing opportunities
- Full or part time options available



Conveniently located near I-88 and Diehl Road in Warrentville

Contact Steve Stoner at 630-805-0497 or sstoner@scgroupre.com

Clarus Center – An Exceptional Value

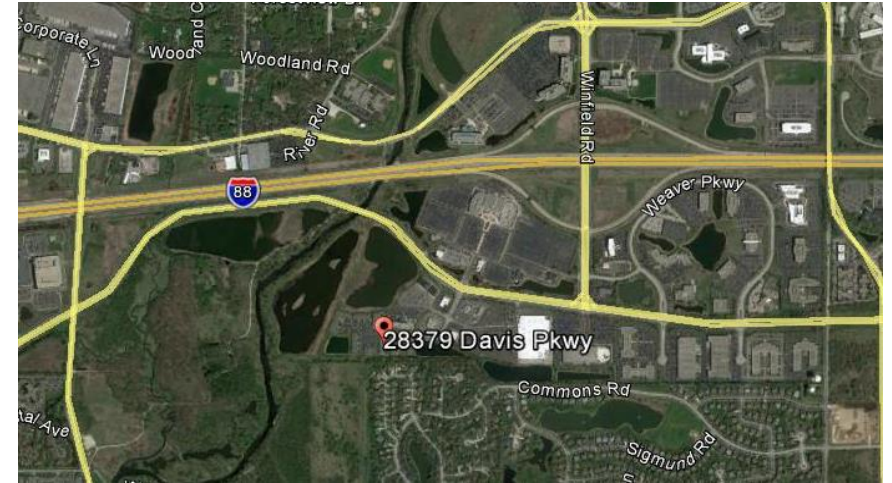
Event Space



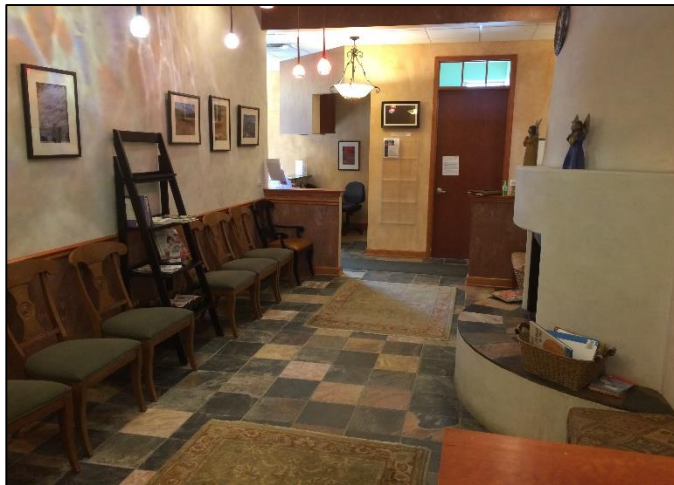
Office



Located near the Winfield Rd exit off of I-88



Reception



Reception



Contact Steve Stoner (630-805-0497) or at sstoner@scgroupre.com to set up a tour.