

FOR SUBLEASE

3600 SOUTHSIDE INDUSTRIAL PKY

ATLANTA, GA 30354



135,200 SF WAREHOUSE

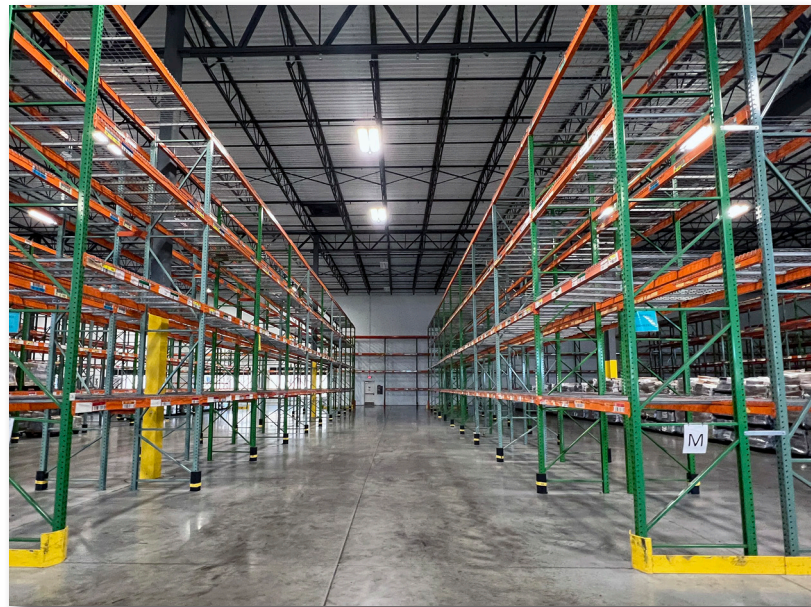
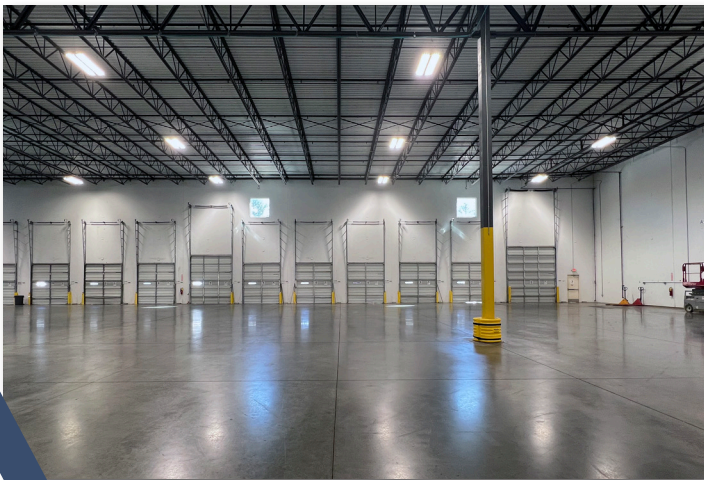
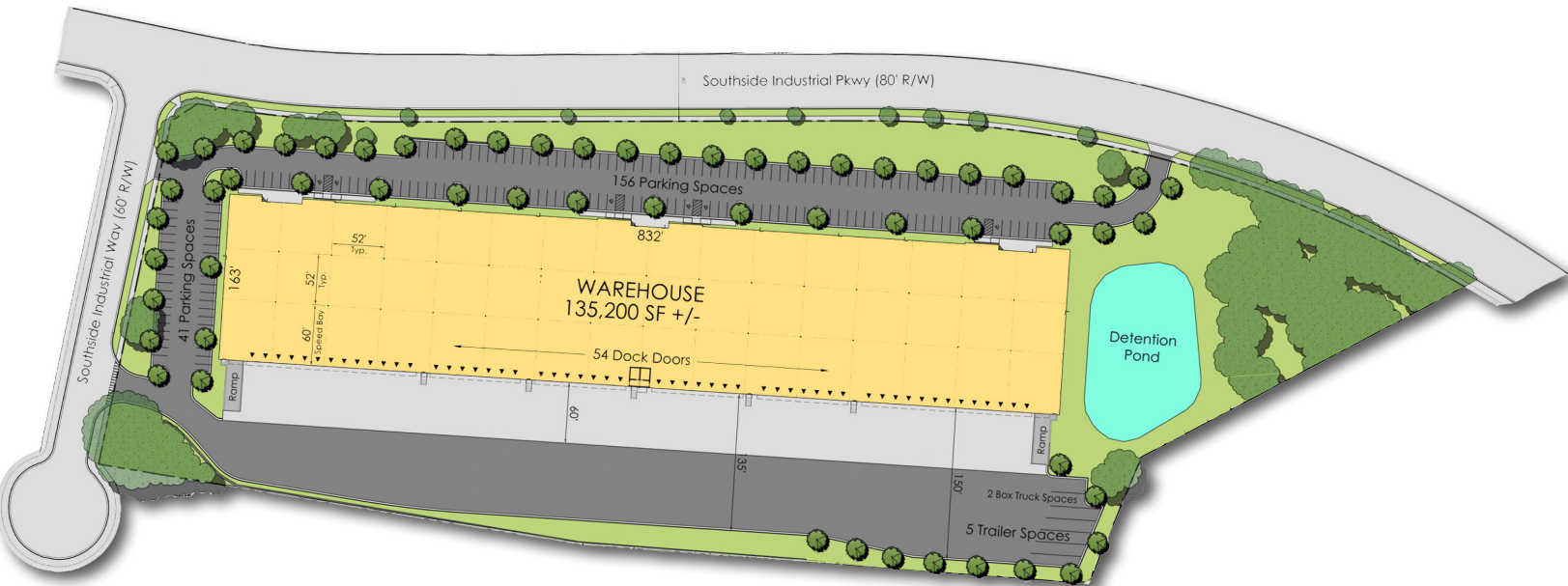
SubLease term through 4/30/2029

*Competitive Rate



PROPERTY HIGHLIGHTS

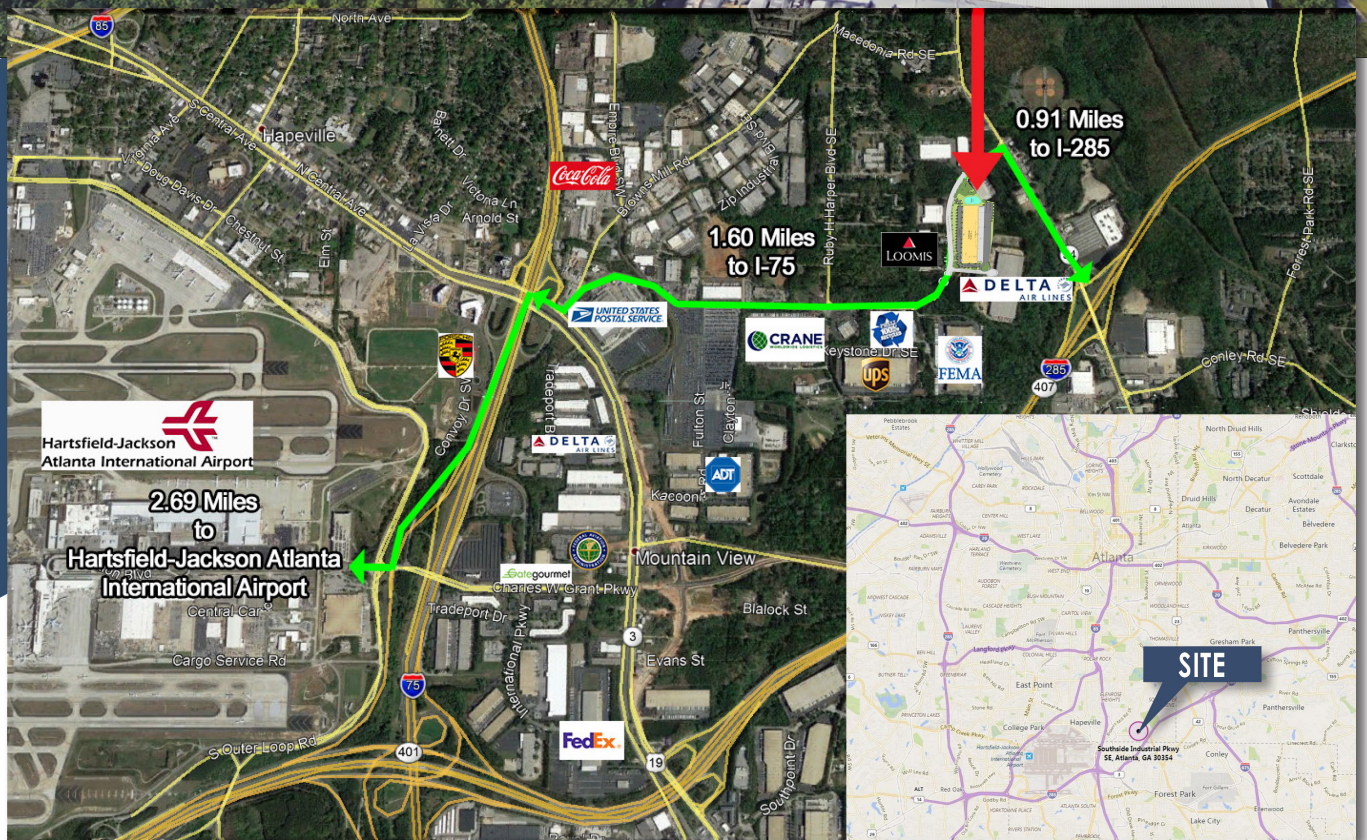
- 135,200 SF Warehouse
- Fifty Four (54) Dock-High
- Two (2) Drive-In (Oversized)
- 30' Clear Height
- 2,600 SF Main Office/
1,500 SF Shipping office
- Columns 52'w x 60'd
- ESFR
- Power- 2,000a/277 - 480v 3p Heavy
- 231 Parking spaces
- Sub-Lease term through 4/30/2029



LOCATION MAP



3600
SOUTHSIDE
INDUSTRIAL PKY
PKY



FOR MORE INFORMATION, PLEASE CONTACT:

GILBERT VALDEZ, SIOR

Managing Director
Mobile +1 404 509 4482
Office +1 404 853 5207
gilbert.valdez@cushwake.com

CHASE WALKER

Senior Associate
Mobile +1 229 343 0933
Office +1 404 460 8670
chase.walker@cushwake.com

NICK GONZALEZ

Associate
Mobile +1 832 785 8888
Office +1 404 682 3441
nick.gonzalez@cushwake.com

1180 Peachtree Street NE, Suite 3100
Atlanta, GA 30309
Main +1 404 875 1000
cushmanwakefield.com



©2025 Cushman & Wakefield. All rights reserved. The information contained in this communication is strictly confidential. This information has been obtained from sources believed to be reliable but has not been verified. NO WARRANTY OR REPRESENTATION, EXPRESS OR IMPLIED, IS MADE AS TO THE CONDITION OF THE PROPERTY (OR PROPERTIES) REFERENCED HEREIN OR AS TO THE ACCURACY OR COMPLETENESS OF THE INFORMATION CONTAINED HEREIN, AND SAME IS SUBMITTED SUBJECT TO ERRORS, OMISSIONS, CHANGE OF PRICE, RENTAL OR OTHER CONDITIONS, WITHDRAWAL WITHOUT NOTICE, AND TO ANY SPECIAL LISTING CONDITIONS IMPOSED BY THE PROPERTY OWNER(S). ANY PROJECTIONS, OPINIONS OR ESTIMATES ARE SUBJECT TO UNCERTAINTY AND DO NOT SIGNIFY CURRENT OR FUTURE PROPERTY PERFORMANCE.



**CUSHMAN &
WAKEFIELD**