



# THE QUADRANT OFFICE BUILDING

7100 Northland Circle N.  
Brooklyn Park, MN 55428

**FOR LEASE  
EXECUTIVE SUITES AVAILABLE**



## FEATURES:

- Multiple executive office suites available in office building located just off I-694 & Boone Ave. in Brooklyn Park, MN.
- Building includes fitness facility, conference room & large training room!
- 4 story building constructed in 1988 with renovations made in 2016.
- Great location near hotels, businesses and retail!

**LOCALLY MANAGED BY ARROW COMPANIES**

## LEASE RATE:

**\$475 / mo.**



Overview .....	1
Aerial Maps / Amenities .....	2-3
Photo Gallery .....	4-5
Available Suites .....	6
Site Plans .....	7-10
City Information .....	11

**SCAN QR CODE TO  
ACCESS FLOOR PLANS**



**Chad Weeks**  
612.619.9911  
cweeks@arrowcos.com



**Steve Fischer**  
612.619.9991  
sfischer@arrowcos.com

## Contact

Phone: 763.424.6355  
Fax: 763.424.7980

**Arrow Companies**  
7365 Kirkwood Court N. Suite 335  
Maple Grove, MN 55369

[www.arrowcos.com](http://www.arrowcos.com)





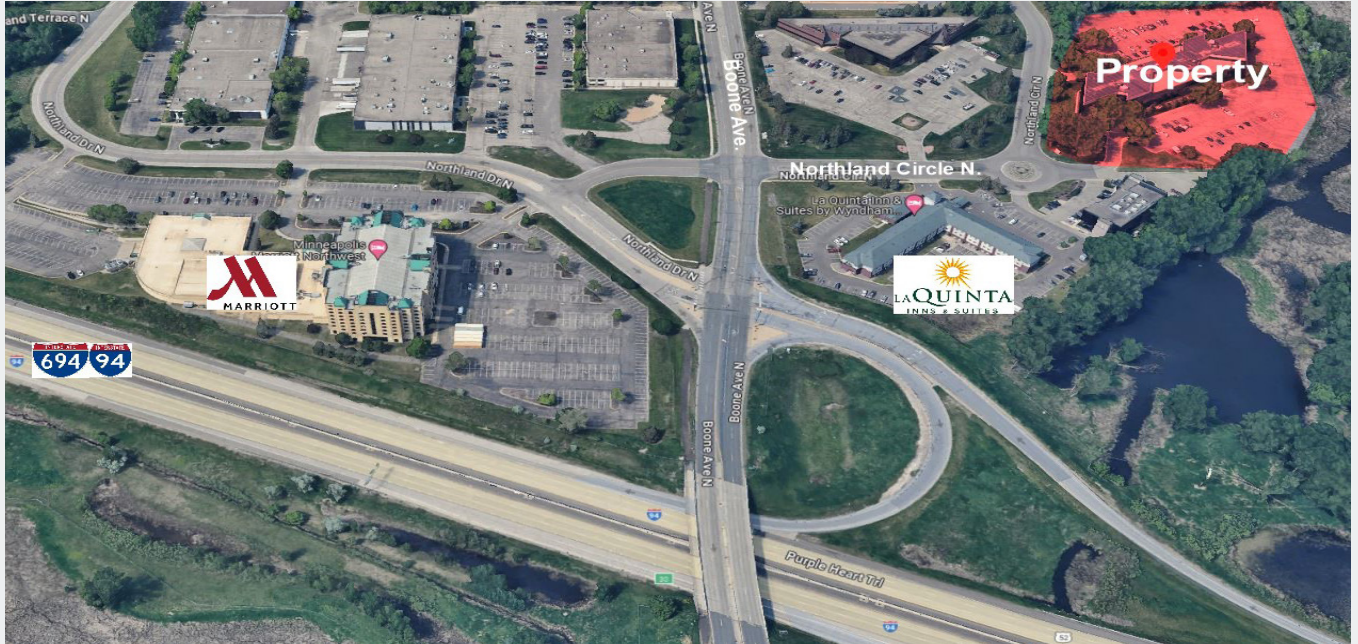
## THE QUADRANT OFFICE BUILDING

7100 Northland Circle N.

Brooklyn Park, MN 55428

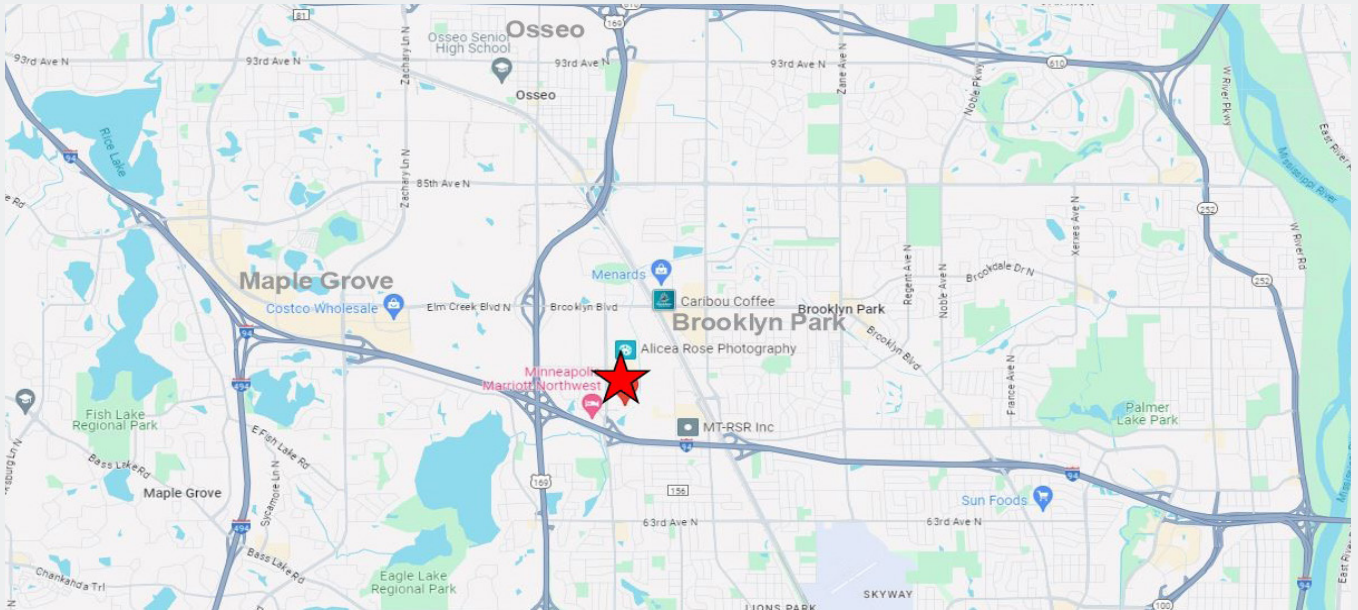
**AERIAL & MAP**

**FOR LEASE  
EXECUTIVE SUITES AVAILABLE**



### Drive Times to Metro Areas

- \* 16 to 20 minutes from Minneapolis
- \* 28 to 30 minutes from MSP airport
- \* 25 to 30 minutes from Saint Paul
- \* 7 to 10 minutes from Shops at Arbor Lakes / Fountains.



#### Contact

Phone: 763.424.6355

Fax: 763.424.7980

#### Arrow Companies

7365 Kirkwood Court N. Suite 335

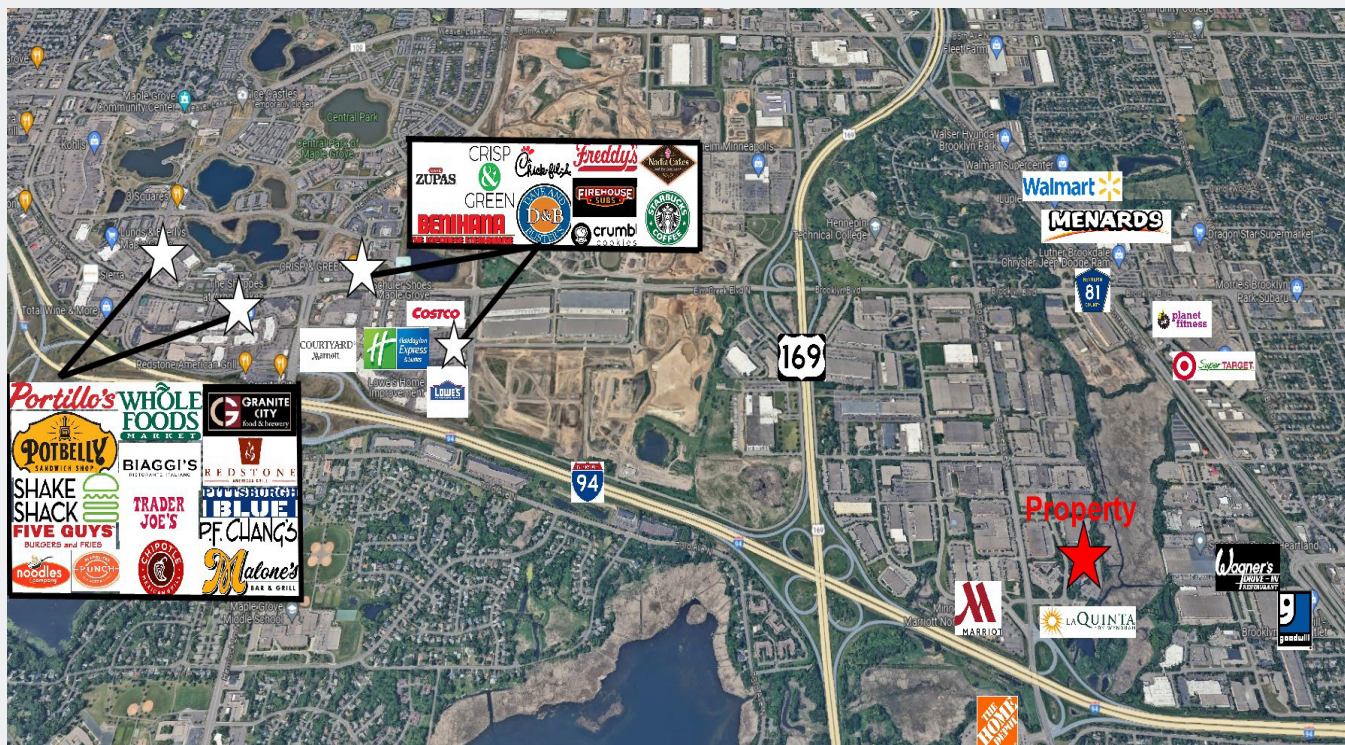
Maple Grove, MN 55369

[www.arrowcos.com](http://www.arrowcos.com)



## AREA AMENITIES

**FOR LEASE**  
**EXECUTIVE SUITES AVAILABLE**



### Contact

Phone: 763.424.6355

Fax: 763.424.7980

### Arrow Companies

7365 Kirkwood Court N. Suite 335

Maple Grove, MN 55369

[www.arrowcos.com](http://www.arrowcos.com)





Lobby Area



Lobby Area



Lobby Area



Lobby Area



Training Room



Training Room

**Contact**

Phone: 763.424.6355

Fax: 763.424.7980

**Arrow Companies**

7365 Kirkwood Court N. Suite 335

Maple Grove, MN 55369

[www.arrowcos.com](http://www.arrowcos.com)



**FOR LEASE  
EXECUTIVE SUITES AVAILABLE**



South Aerial



North Aerial



Fitness Room



Breakroom



Front Entrance



Lobby View

**Contact**

Phone: 763.424.6355

Fax: 763.424.7980

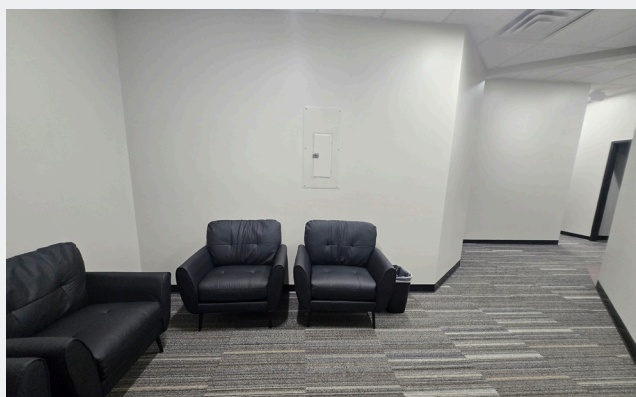
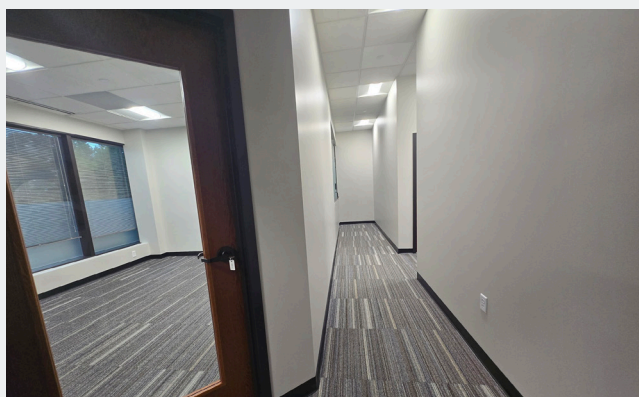
**Arrow Companies**

7365 Kirkwood Court N. Suite 335

Maple Grove, MN 55369

[www.arrowcos.com](http://www.arrowcos.com)





**Contact**

Phone: 763.424.6355

Fax: 763.424.7980

**Arrow Companies**

7365 Kirkwood Court N. Suite 335

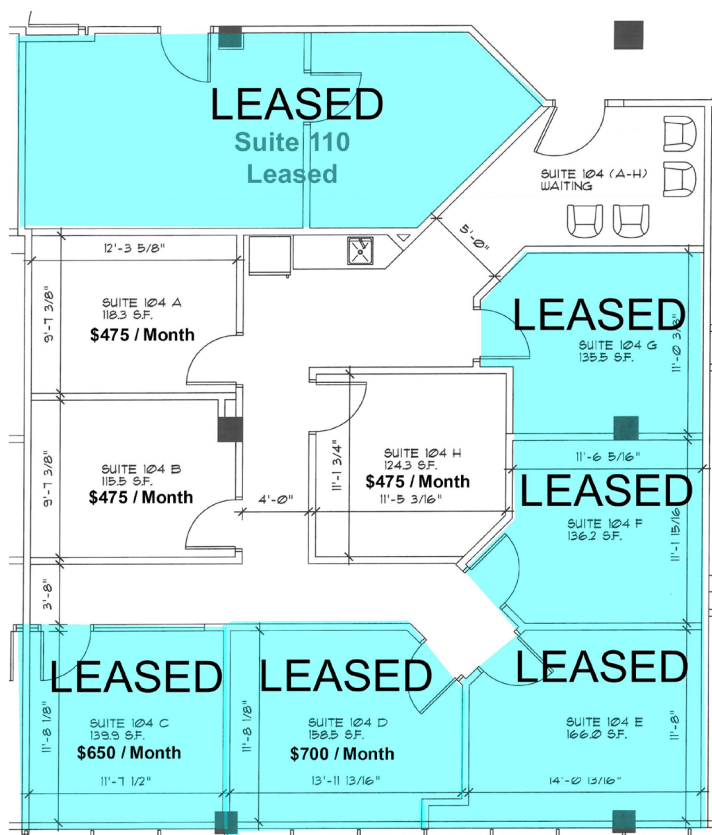
Maple Grove, MN 55369

[www.arrowcos.com](http://www.arrowcos.com)

**EXECUTIVE SUITES**

**FOR LEASE  
EXECUTIVE SUITES AVAILABLE**

Suite 104A	118 SF	\$475 per month
Suite 104B	115 SF	\$475 per month
Suite 104C	140 SF	LEASED
Suite 104D	159 SF	LEASED
Suite 104E	166 SF	LEASED
Suite 104F	136 SF	LEASED
Suite 104G	135 SF	LEASED
Suite 104H	124 SF	\$475 per month



**Contact**

Phone: 763.424.6355

Fax: 763.424.7980

**Arrow Companies**

7365 Kirkwood Court N. Suite 335

Maple Grove, MN 55369

## CITY INFORMATION

## FOR LEASE EXECUTIVE SUITES AVAILABLE

POPULATION (5 MILE RADIUS)	Total Population -- 241,489 2028 (Estimate) - 242,489
AVERAGE HOUSEHOLD INCOME	2024 (Estimate) - \$102,244
TRAFFIC	Boone Ave - 9,400 vehicles per day
CITY INFO	<p><b>B</b>rooklyn Park is the sixth largest city in Minnesota and continues to be a rapidly growing second-ring suburb. This former agriculture community offers a wide range of commercial, industrial and residential development opportunities. The city occupies approximately 17,020 acres—27 square miles, bounded on the south by Brooklyn Center, Crystal and New Hope, Champlin on the north, and Maple Grove and Osseo on the west. Brooklyn Park is about 85 percent developed, with the next area of growth under development north of Highway 610.</p> <p>The community provides excellent recreational opportunities, ranging from an extensive park and trail system to a nationally recognized public golf course. The city offers a number of amenities including unique parks and recreation programs, beautiful shoreline along the Mississippi River and a historical farm with seasonal activities. Residents and visitors alike are encouraged to enjoy the natural side of Brooklyn Park. A strong residential housing market, retail commercial market and industrial base complement the city's natural elements.</p>



### Contact

Phone: 763.424.6355  
Fax: 763.424.7980

### Arrow Companies

7365 Kirkwood Court N. Suite 335  
Maple Grove, MN 55369

[www.arrowcos.com](http://www.arrowcos.com)