

PSB

PERSHING SQUARE BUILDING

PERCH

Mrs. fish 魚夫人
sushi • art • whisky



PERSHING SQUARE BUILDING

Creative Offices & Executive Suites

448 S Hill Street | Los Angeles, CA 90013



SQUARE FOOTAGE

± 100 RSF – 300 RSF executive
suites ± 905 RSF – 11,603 RSF
creative office Full floor available

Property Information

CONVENIENT FEATURES

24/7 Security
On-Site Property
Management Modernized
Elevators
Secured Access
Operable Windows
On-Site Restaurants & Bars

SERVICES

Flexible Lease Terms
Built to Suit Options
Adjacent Parking Available
Tenant Exclusive Amenities

Tenant Amenities



RESTAURANT DISCOUNT

All tenants at PSB will receive a
10% VIP DISCOUNT CARD
to **Perch & Mrs. Fish** restaurants for
their key employees.

Perfect for the after work happy
hours or evening night out!

PERCH

PERCH ROOFTOP ACCESS

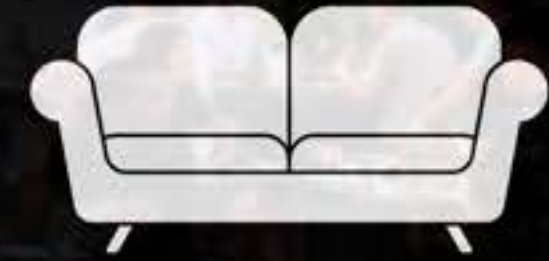
Tenants can enjoy
EXCLUSIVE WEEKDAY ACCESS
to the 16th floor rooftop prior to Perch
opening at 4:00pm, with 360-degree
unobstructed views and complimentary
Wi-Fi.



TENANT EXCLUSIVE LUNCH & BREAKFAST

Tenants get
FREE BREAKFAST
every Tuesday and
LUNCH BITES
every Thursday along with an
EXCLUSIVE MENU
option to purchase lunch from Perch,
delivered straight to their office.

Tenant Amenities



TENANT LOUNGE

With the latest addition of the
EXCLUSIVE LOUNGE
tenants can take a break and enjoy
some
COMPLIMENTARY COFFEE
while simply relaxing or playing a
game of pool.

Local Amenities

The prime location of the Pershing Square Building (PSB) allows for an easy walk or commute to local amenities including the Jewelry District, Financial District, Bunker Hill, Art District, and hundreds of local food and drink options.



110 Freeway

The Broad

Grand Park

Angels Flight

**Westin
Bonaventure**

**Grand Central
Market**

PSB

**City National
Plaza**

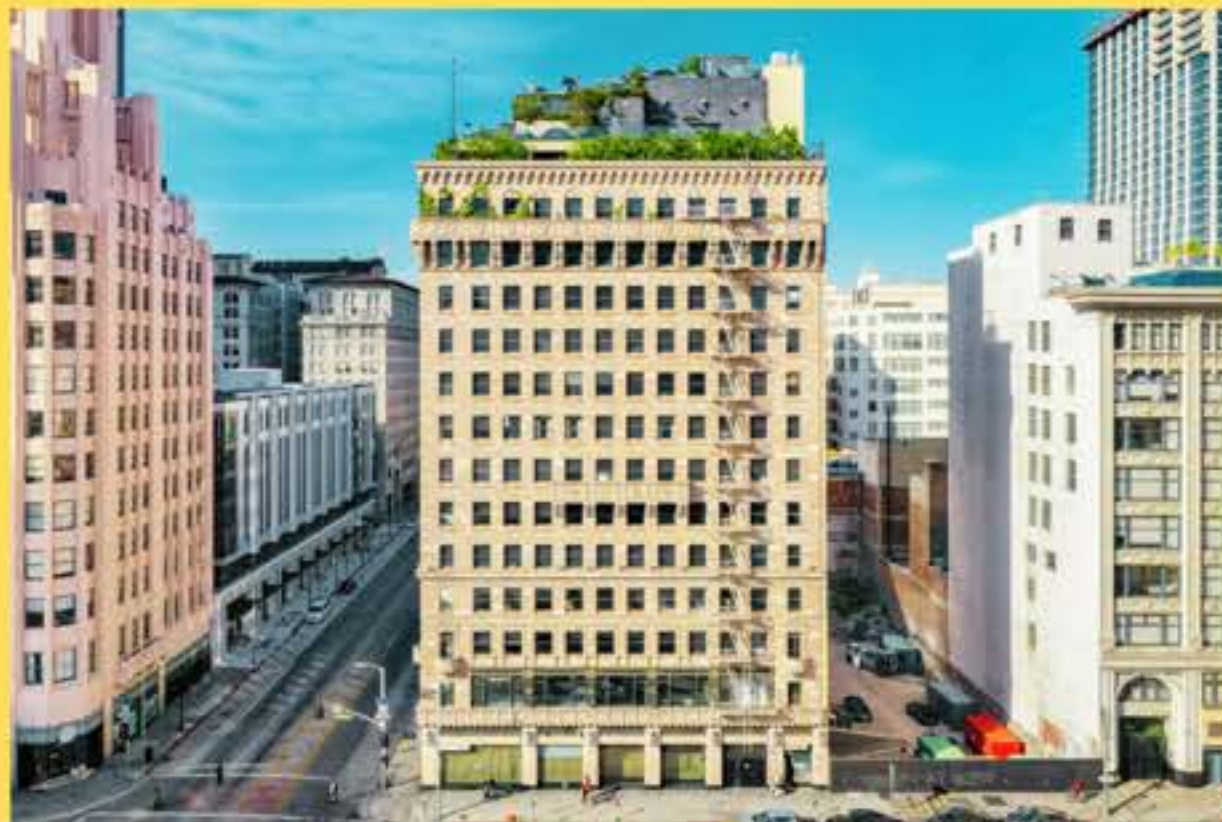
The Last Bookstore

Pershing Square

Jewelry District



Perch LA



Pershing Square Building



Mrs. Fish



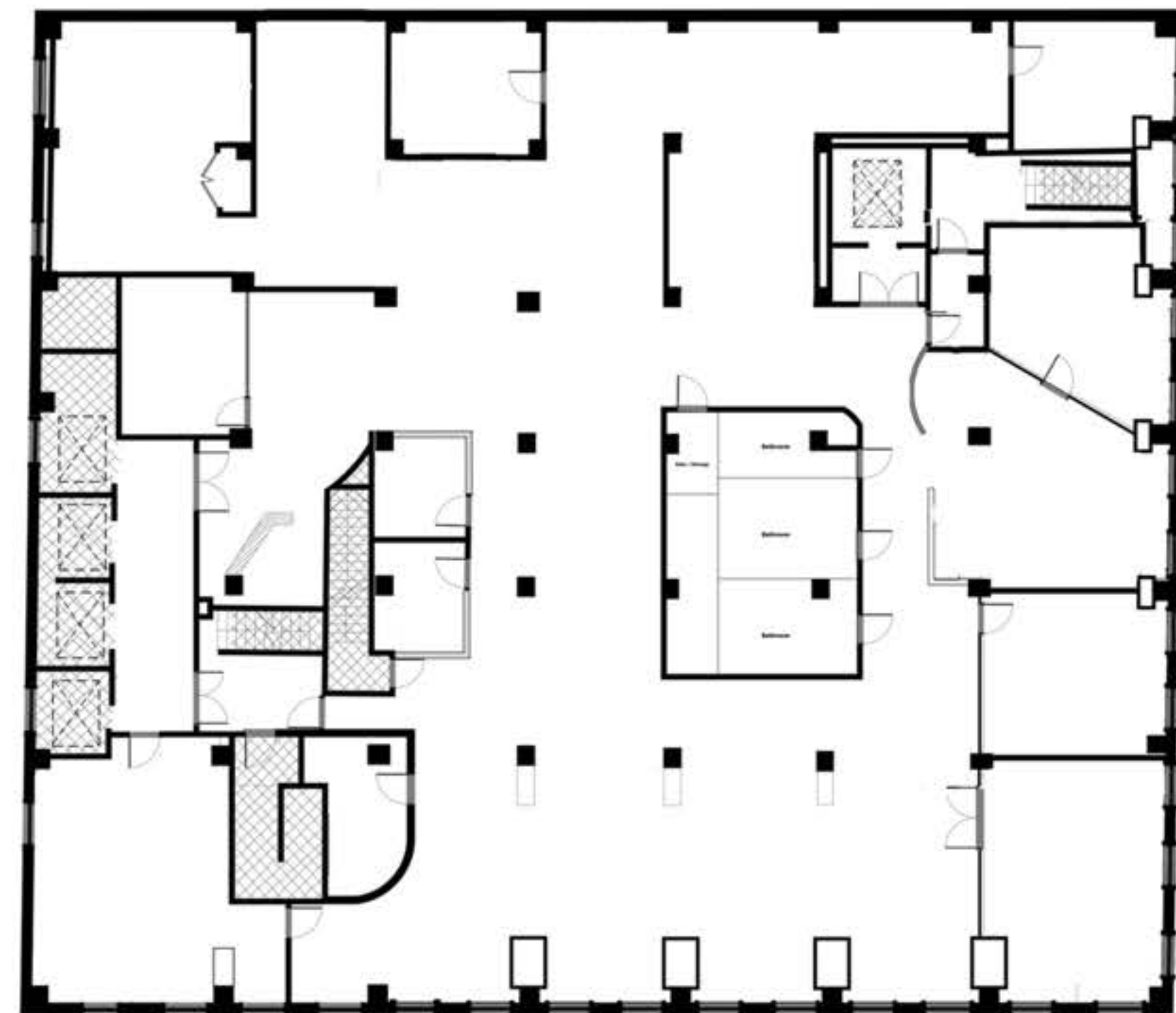


Suite 200

$\pm 11,603$ RSF (entire floor)

DESCRIPTION

Full floor suite with panoramic views and large open plan. This suite features 7 private offices, conference room (seats up to 12), a breakroom/kitchen area, 2 flex rooms/meeting rooms, 2 restrooms, and high ceilings.



2nd Floor

Hill Street

5th Street

Suite 401-405

± 2,593 RSF

DESCRIPTION

A great fit for larger teams, this suite has private offices, a kitchenettes, and a spacious open workspace that can be utilized in many ways. Suite features high ceilings and fully operable windows.

Pershing Square Building
Suite 401



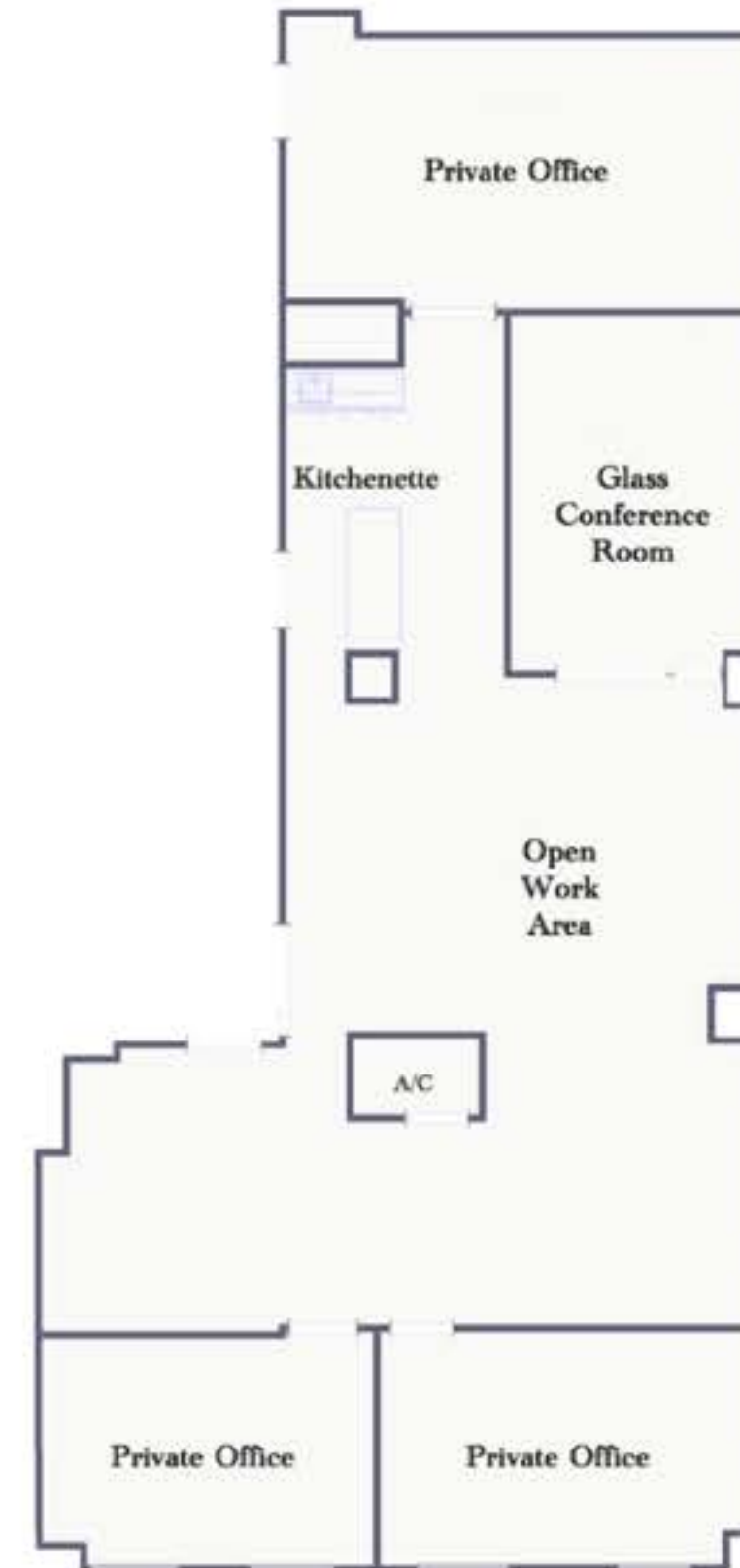
Suite 408

± 2,460 RSF

DESCRIPTION

Ideal for larger teams, this suite boasts private offices, kitchenettes, and a generously sized open workspace adaptable to various needs. Suite features high ceilings and fully operable windows.

Pershing Square Building Suite 408



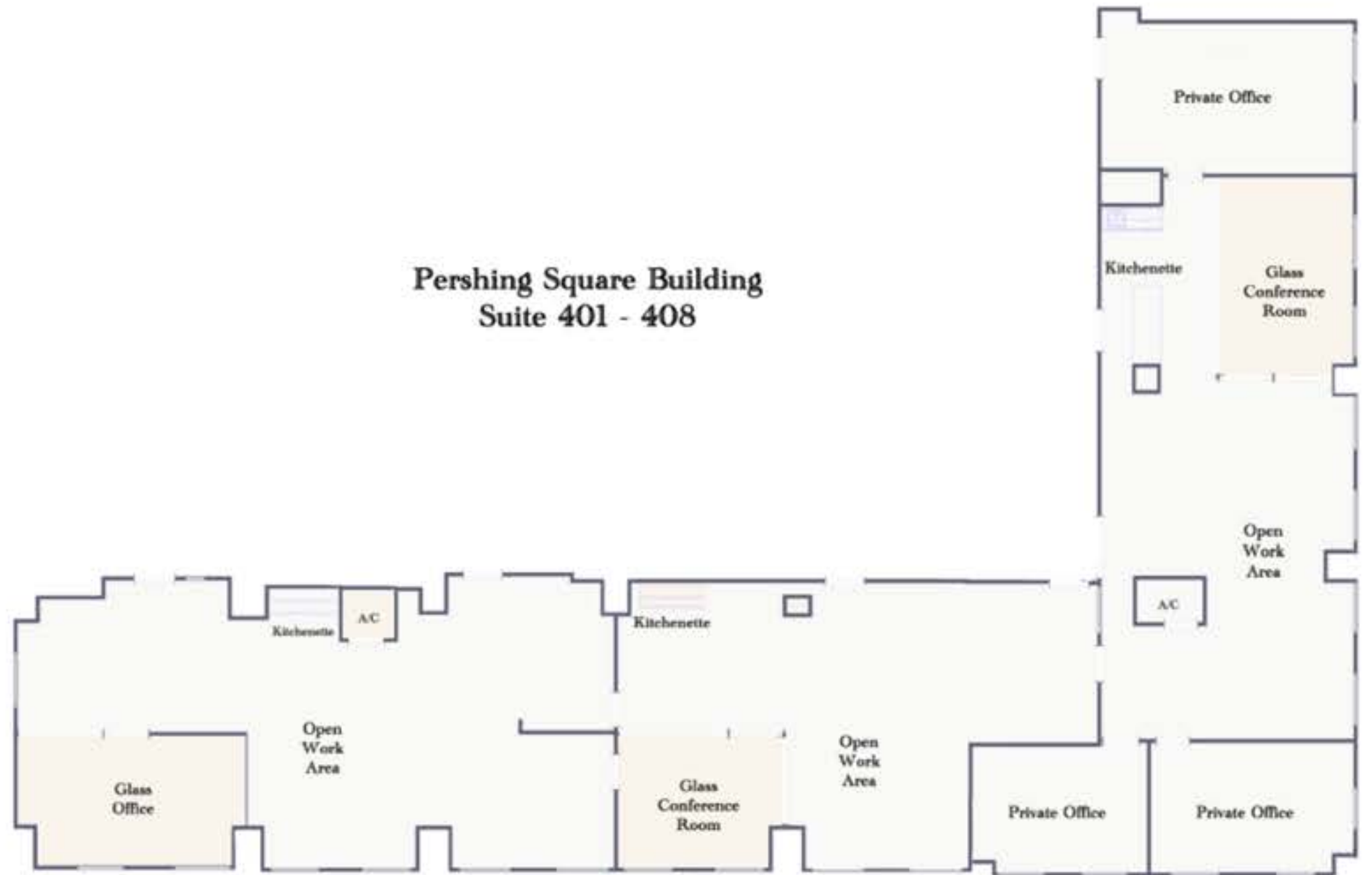
Suite 401-408

± 5,053 RSF (combined)

DESCRIPTION

A great fit for larger teams, this suite has private offices, a kitchenettes, and a spacious open workspace that can be utilized in many ways. Suite features high ceilings and fully operable windows.

Pershing Square Building
Suite 401 - 408



Suite 415

± 1,573 RSF

DESCRIPTION

An ideal space for a smaller team, this suite has a private office, a kitchenette, and a spacious open workspace that can be utilized in many ways. Suite features high ceilings and fully operable windows.

A photograph of a modern bar or lounge area. In the foreground, there are three high-top stools with a light-colored, possibly leather or vinyl, seat and a dark, possibly metal, frame. Behind the stools is a long, light-colored wooden or laminate bar counter. Above the counter, there is a backlit shelf displaying a variety of bottles, likely spirits or mixers. The background wall is white and features a large, abstract, colorful artwork. The lighting is warm and ambient, creating a cozy atmosphere.

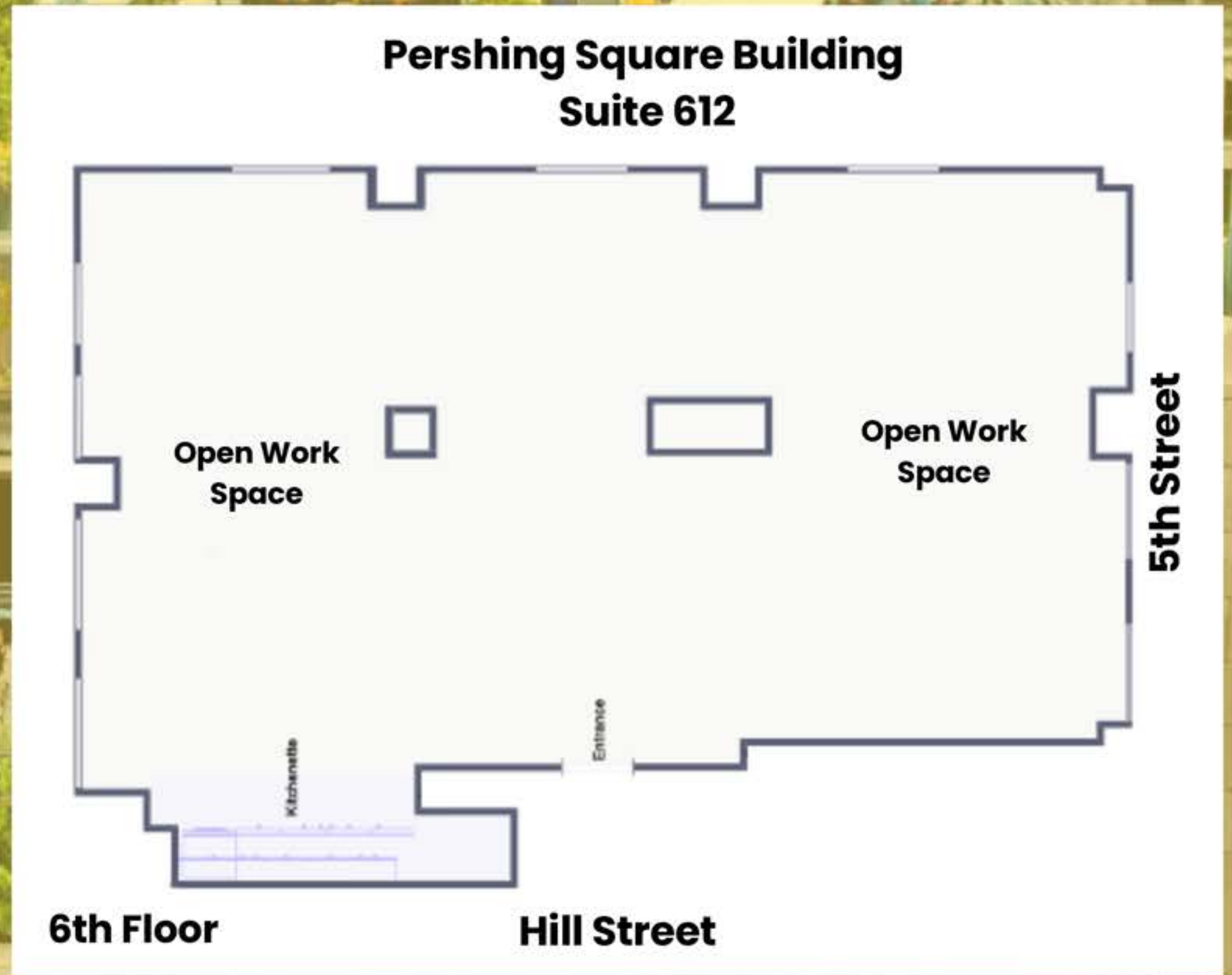
Floor Plan Coming Soon

Suite 612

± 1,867 RSF

DESCRIPTION

A great fit for larger teams, this suite has 5 private glass offices, a conference room (seats 10), 2 kitchenettes, and a spacious open workspace that can be utilized in many ways. Suite features high ceilings and fully operable windows.

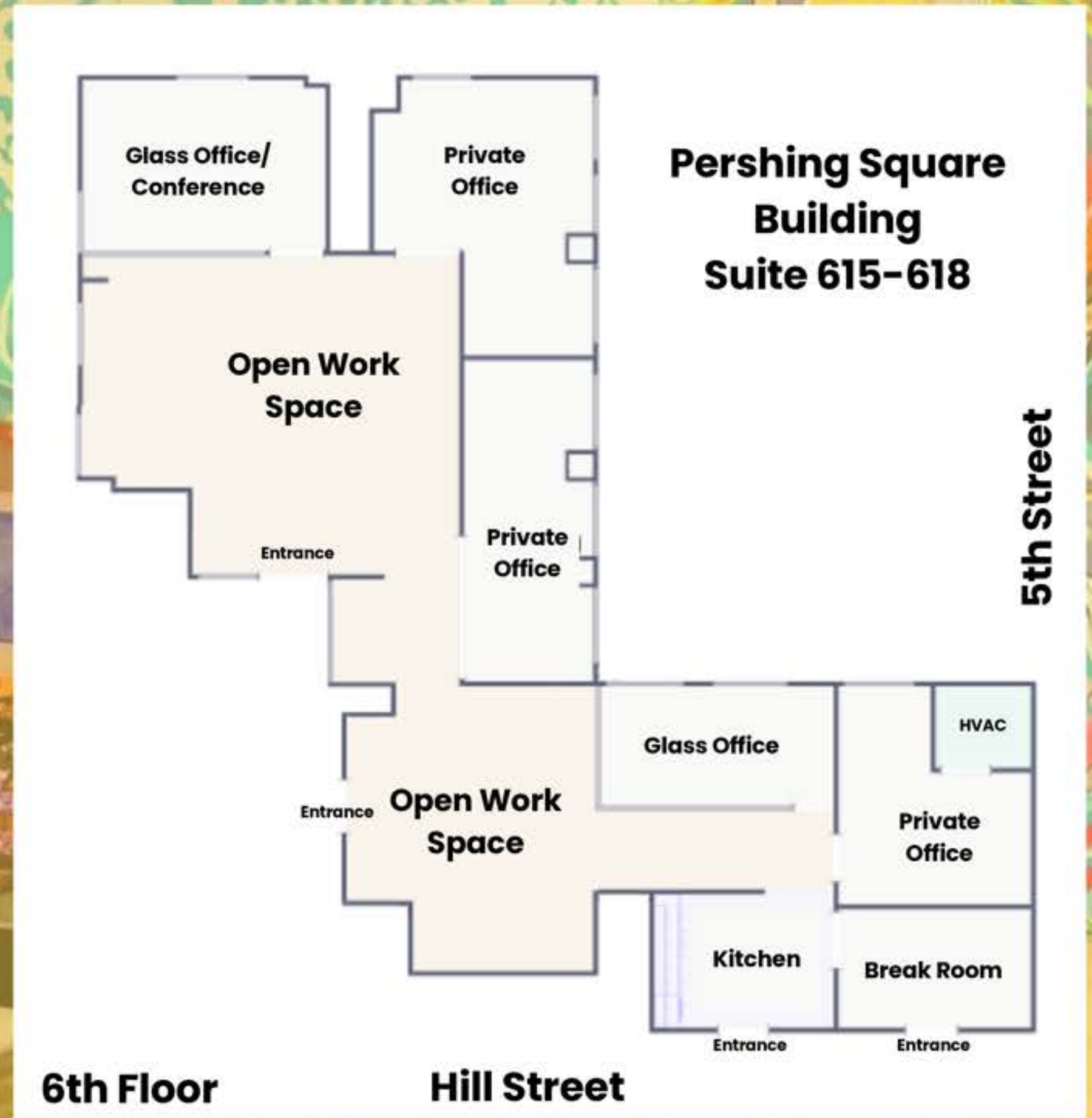


Suite 615-618

± 3,108 RSF

DESCRIPTION

This suite features 4 offices, a conference room, and 2 additional rooms with an open workspace which can be customized to tenant's liking. Entire suite includes high ceilings and fully operable windows.



Suite 717-718

± 2,161 RSF

DESCRIPTION

This corner suite brings in lots of sunlight and a great open workspace for a productive environment. Includes 2 private offices, a conference room, kitchenette, storage room, high ceilings, and fully operable windows

**Pershing Square Building
Suite 717-718**



5th Street

7th Floor

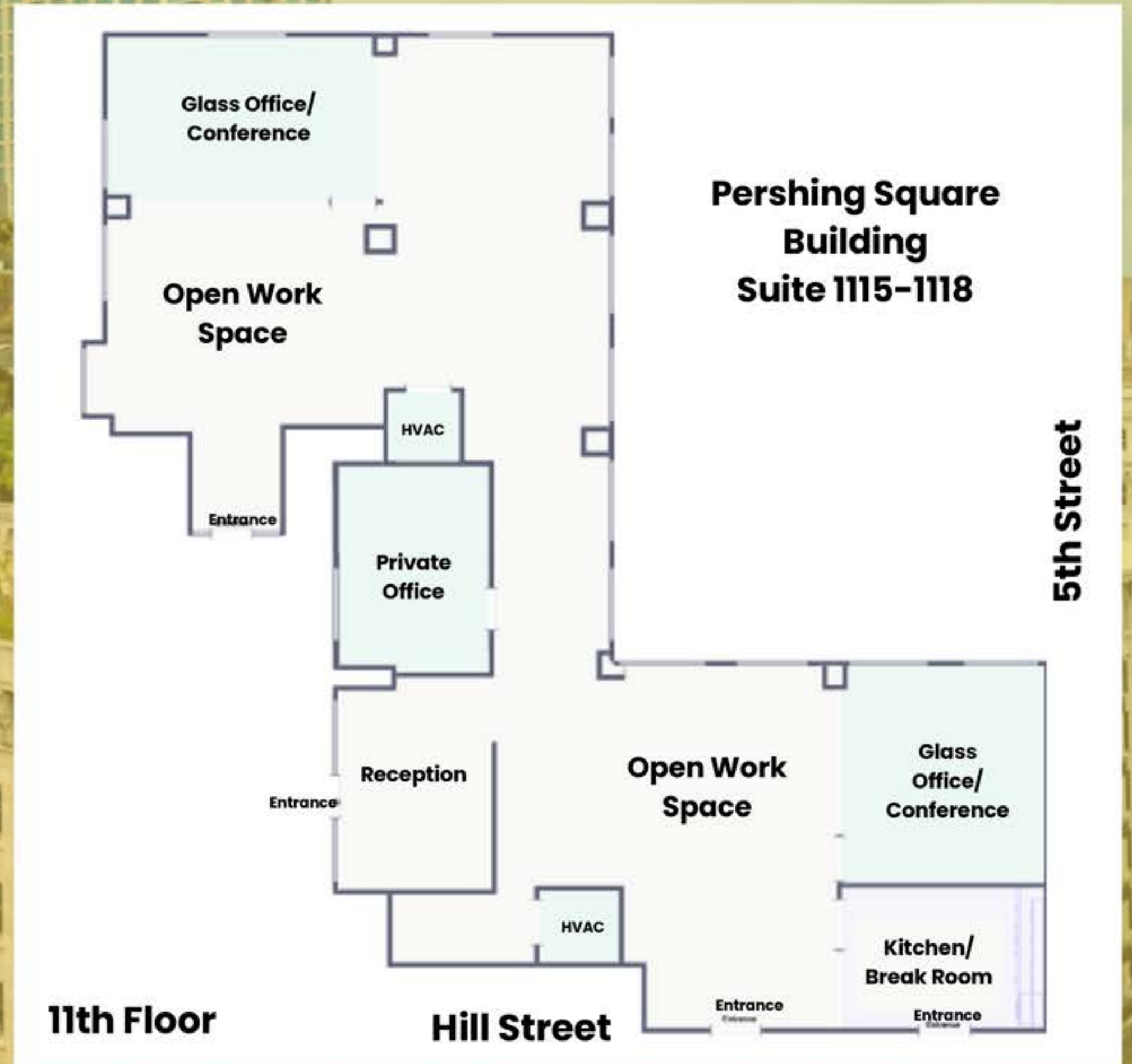
Hill Street

Suite 1115-1118

±2,960 RSF

DESCRIPTION

This flex suite has 2 private offices, a glass conference room, kitchenette, reception area, high ceilings, fully operable windows, and a spacious open space that can be utilized for just about anything.

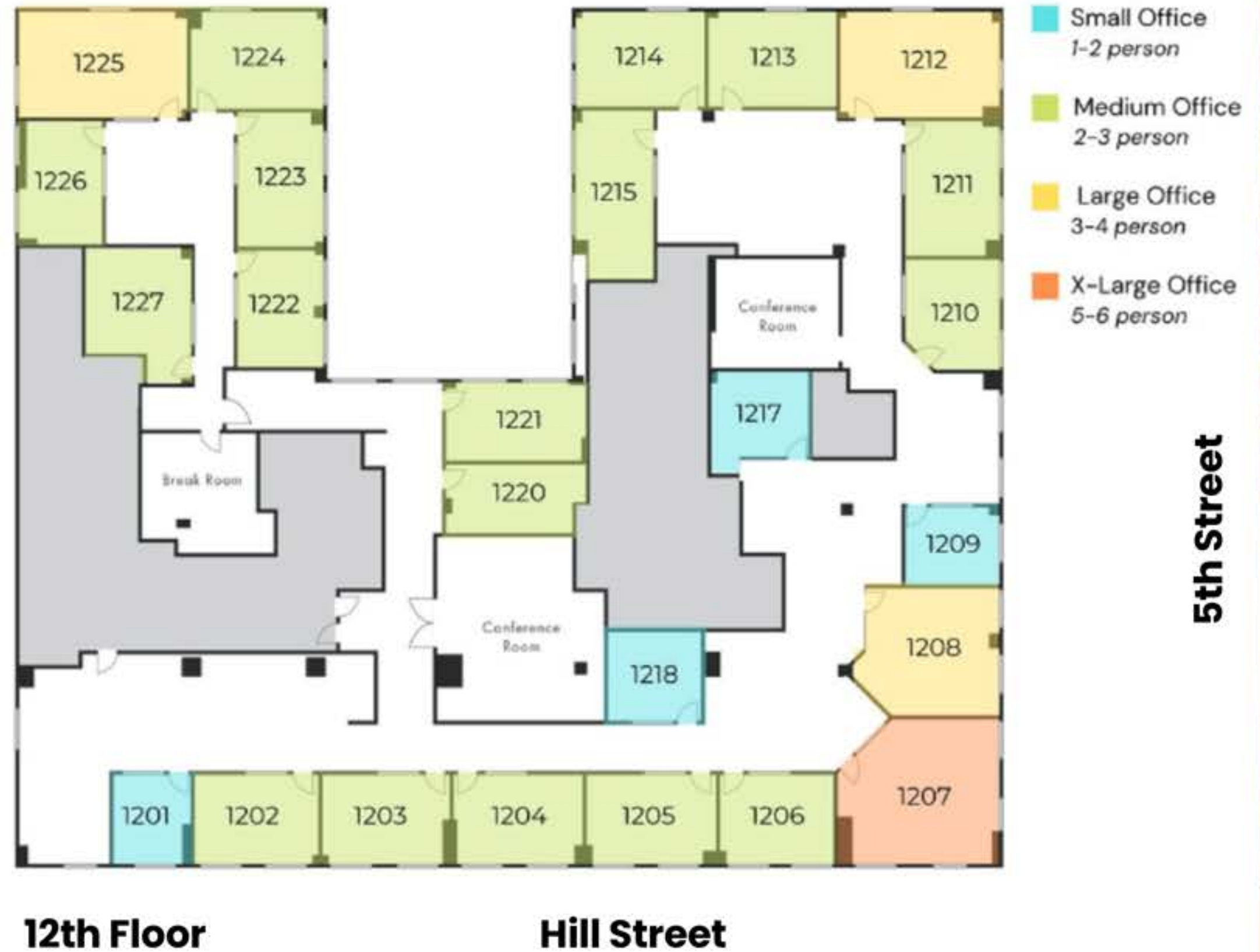


12th Floor Executive Suites

± 100–300 RSF

DESCRIPTION

The Executive Suites @PSB are a great place for creators who just need a single office. These suites are all-inclusive with Wi-Fi, VOIP access, furniture, receptionist, kitchen breakroom, and meeting room hours.





Contact Us

ARSHAK PAPZYAN

c. (213) 929-3428

o. (213) 654-5739

arshak.papazyan@jmfdevelopment.com

448 S Hill St

Los Angeles, CA 90013

leasing@jmfdevelopment.com

www.448shill.com

[@pershingsquarebuilding](#)