

FOR SUBLEASE

MILPITAS CALIFORNIA
1487 LANDESS AVENUE

CLASS A URGENT CARE



PROPERTY FEATURES:

- Newly constructed, Class A Urgent Care medical buildout
- Endcap location and prominent visibility from Landess Avenue
- Building and Monument Signage
- Abundant Parking
- Immediate access to Highway 680

AVAILABLE SPACE:

±3,460 RSF
LED: 7/31/2026

SUBLEASE RATE:

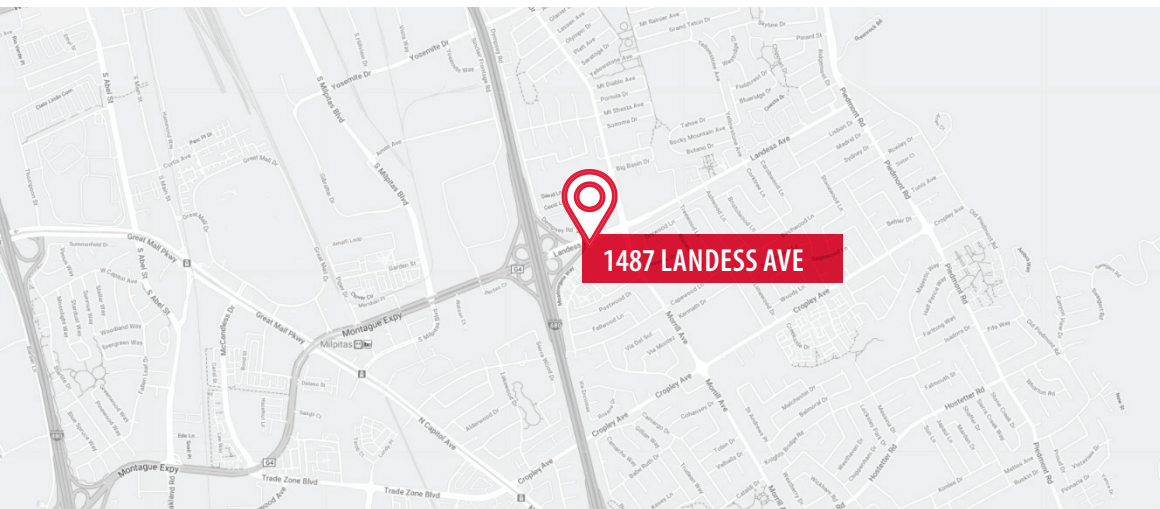
\$3.50/RSF, NNN

For Further Information,
Please Contact:

Jeff Pteulla
408.888.4859
jeff@healthmedrealty.com
Lic. 00852399

HealthMed Realty
690 Saratoga Avenue, Suite 200
San Jose, CA 95129
408.217.6000 T
408.457.8803 F

No warranty or representation, express or implied is made as to the accuracy of the information contained herein, and the same is submitted subject to errors, omissions, changes of price, rental or other conditions, withdrawal without notice.

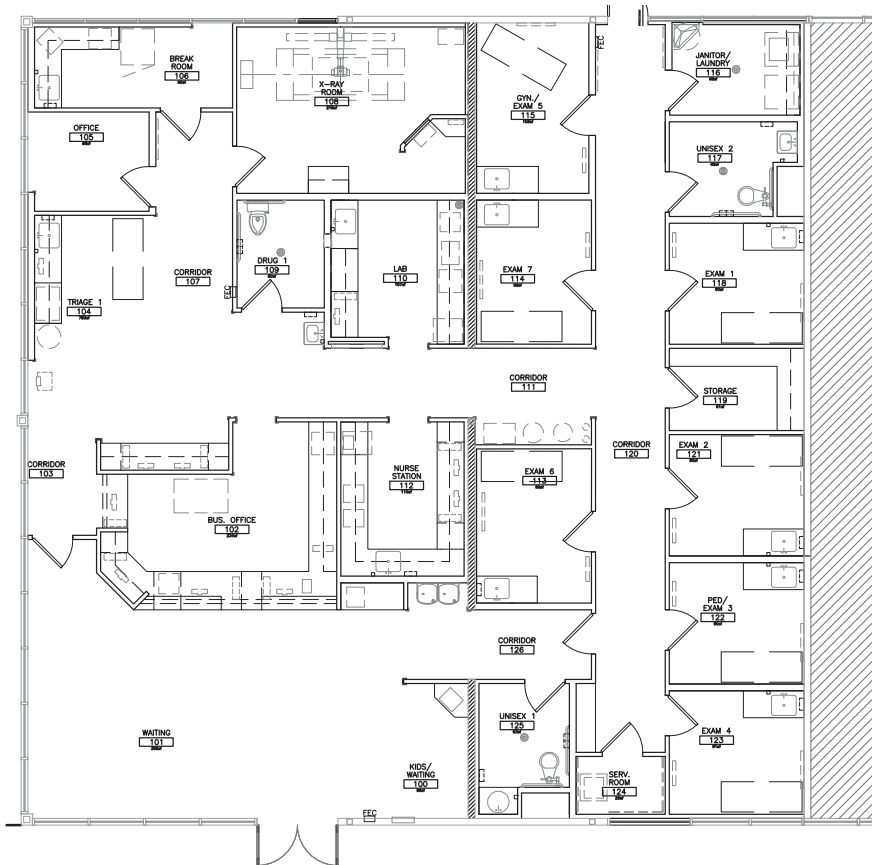


FOR SUBLEASE

MILPITAS CALIFORNIA
1487 LANDESS AVENUE

FLOOR PLAN

±3,460 RSF



Not to scale. All dimensions are approximate.



For more information,
please contact:

Jeff Petulla
408.888.4859
jeff@healthmedrealty.com
Lic. 00852399

HealthMed Realty
690 Saratoga Avenue
Suite 200
San Jose, CA 95129
408.217.6000 T
408.457.8803 F
www.healthmedrealty.com
Lic. 01902032



No warranty or representation, express or implied is made as to the accuracy of the information contained herein, and the same is submitted subject to errors, omissions, changes of price, rental or other conditions, withdrawal without notice.