

AVAILABLE NOW FOR OCCUPANCY

5420 Kietzke Lane

RENO, NV



FOR LEASE | Professional Office/Medical Office

CBRE

Located in the Meadowood Submarket, Reno's most central location at the entrance of the Mountain View Corporate Center right off Kietzke Lane, nearby I-580 and South Virginia Street. Close to several amenities, public transportation routes and residential neighborhoods. Near Rancharra, a new development with residential, retail and office.



**±60,024 SF PRIME PROFESSIONAL/
MEDICAL OFFICE BUILDING**

LEASE RATE NEGOTIABLE

TENANT IMPROVEMENTS AVAILABLE

±6,546 SF UP TO ±11,279 SF AVAILABLE



Prime Visibility to I-580



Elevators

Private parking lot

Five minute drive to Reno-Tahoe International Airport

Adjacent to the I-580 on/off ramps

Adjacent to numerous restaurant amenities



Close to Rancharra a 140 acre master community with residential, retail and office.

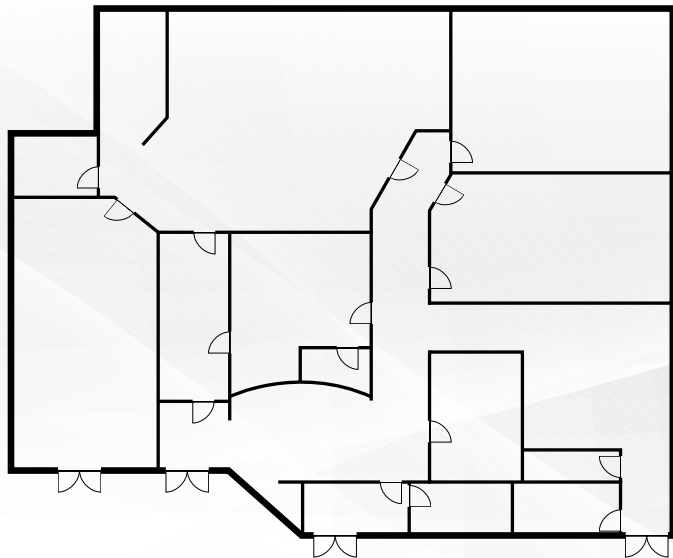


SUITE 205

6,546+ SF AVAILABLE

Ideal for dental office or medical office

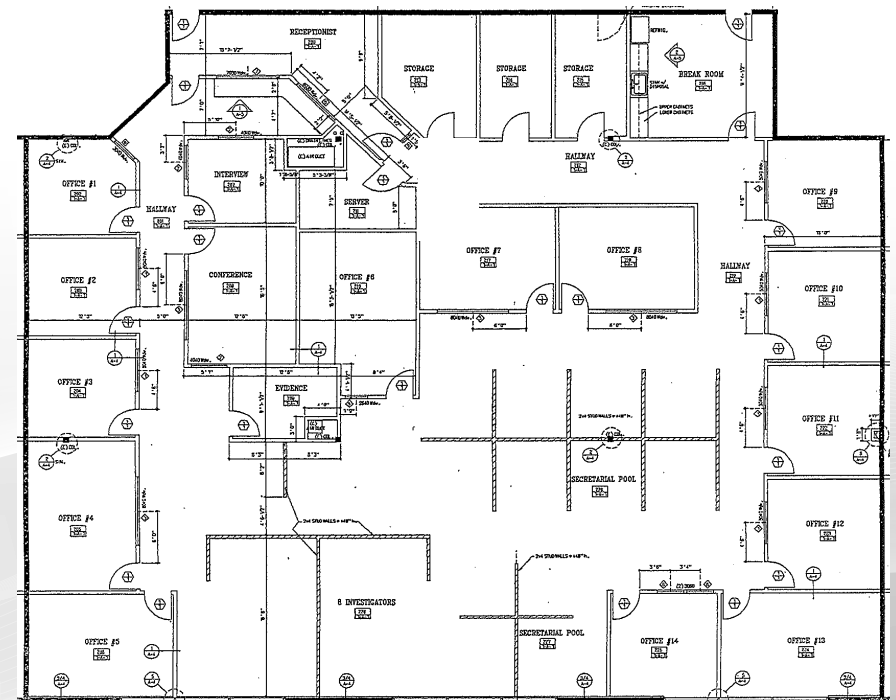
- Large Open Area
- Private Offices
- Conference Room
- Lobby/Reception
- Break Room
- Lab
- Storage
- Multiple Built in Cabinets
- Hook Ups and Sinks for Dental Chairs



SUITE 200 & 202

11,279 SF AVAILABLE

- 15 Private Offices
- Reception
- Open Bull Pen
- Conference Room
- Break Room
- Storage



LOCATION ADVANTAGE



Five-minute drive to Reno-Tahoe International Airport



Across the Street from 140 Acre Master Planned Community with residential, retail and office



Adjacent to the I-580 on/off ramps



Exceptional Access to Public Transportation



Adjacent to Numerous Restaurant Amenities



5420 Kietzke Lane
RENO, NV

LEAHNA CHAPMAN

Senior Associate
Lic. S.0183267
T 775 823 6937
leahna.chapman@cbre.com

DAVID WOODS, CCIM

Senior Vice President
Lic. S.0072655
T 775.321.4459
david.woods@cbre.com

MATT GRIMES, CCIM

Senior Vice President
Lic.S.0072644
T 775 356 6290
matt.grimes@cbre.com

