



# Cherry Lane Center

1560 N. Cresmont Dr., Meridian, ID 83642

**For Lease**

## Property Information:

Lease type: \$22.00 Full Service (except janitorial)

Total Size: 36,730 sq. ft.

Zoning: L-O

Acres: 2.671 acres

Tenant Improvement Allowance: Negotiable

## Listing Comments:

- Class B - Best in Class
- Lit Street Signage
- Ample Parking
- Small and Large Suites Available
- Each suite has private restroom

## Available

- Suite D - 1,154sf - \$2,115/mo occupied, call for showing
- Suite G—1,308sf—\$2,398/mo occupied, call for showing

## Contact:

Tim Graver, CCIM, CPM

Phone: 208-322-4900

Cell: 208-850-1440

tim@primeidaho.com

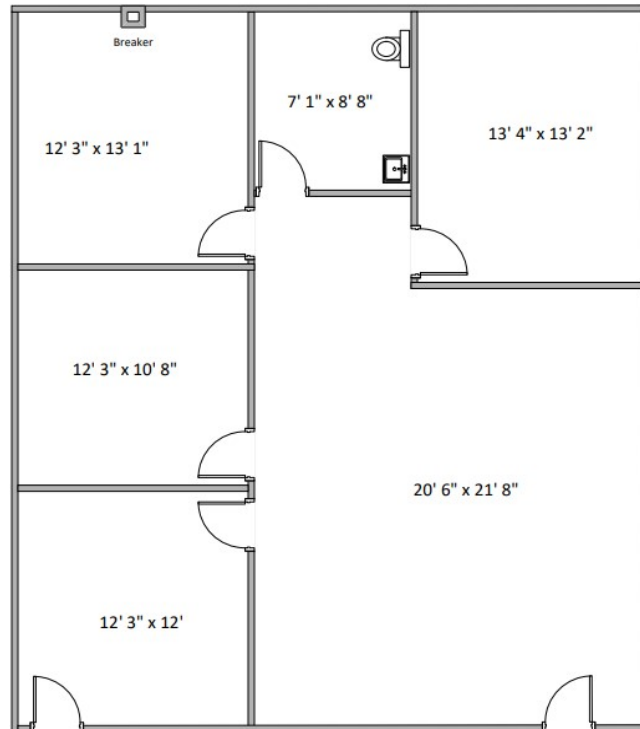




# Floor Plan



## Suite D



# Floor Plan



## Suite G

Sidewalk around building

