



No warranty, express or implied, is made as to the accuracy of the information contained herein. This information is submitted subject to errors, omissions, change of price, rental or other conditions, withdrawal without notice, and is subject to any special listing conditions imposed by our principals. Cooperating brokers, buyers, tenants and other parties who receive this document should not rely on it, but should use it as a starting point of analysis, and should independently confirm the accuracy of the information contained herein through a due diligence review of the books, records, files and documents that constitute reliable sources of the information described herein. Logos are for identification purposes only and may be trademarks of their respective companies. NAI Capital Commercial, Inc. CAL DRE Lic. #02130474

Dave Maron
818.613.2716
dmaron@naicapital.com
CA DRE #00620557

Evelyn Hamilton
818.742.1646
ehamilton@naicapital.com
CA DRE #01925029

FOR LEASE

21723 Plummer St., Chatsworth, CA 91311



Showroom/Reception



Warehouse



AVAILABLE SF	LOT SF	OFFICE	RATE	AVAILABILITY
5,280 SF	POL	909 SF	\$1.35/SF/Month, MG	VACANT

No warranty, express or implied, is made as to the accuracy of the information contained herein. This information is submitted subject to errors, omissions, change of price, rental or other conditions, withdrawal without notice, and is subject to any special listing conditions imposed by our principals. Cooperating brokers, buyers, tenants and other parties who receive this document should not rely on it, but should use it as a starting point of analysis, and should independently confirm the accuracy of the information contained herein through a due diligence review of the books, records, files and documents that constitute reliable sources of the information described herein. Logos are for identification purposes only and may be trademarks of their respective companies. NAI Capital Commercial, Inc. CAL DRE Lic. #02130474

Dave Maron
818.613.2716
dmaron@naicapital.com
CA DRE #00620557

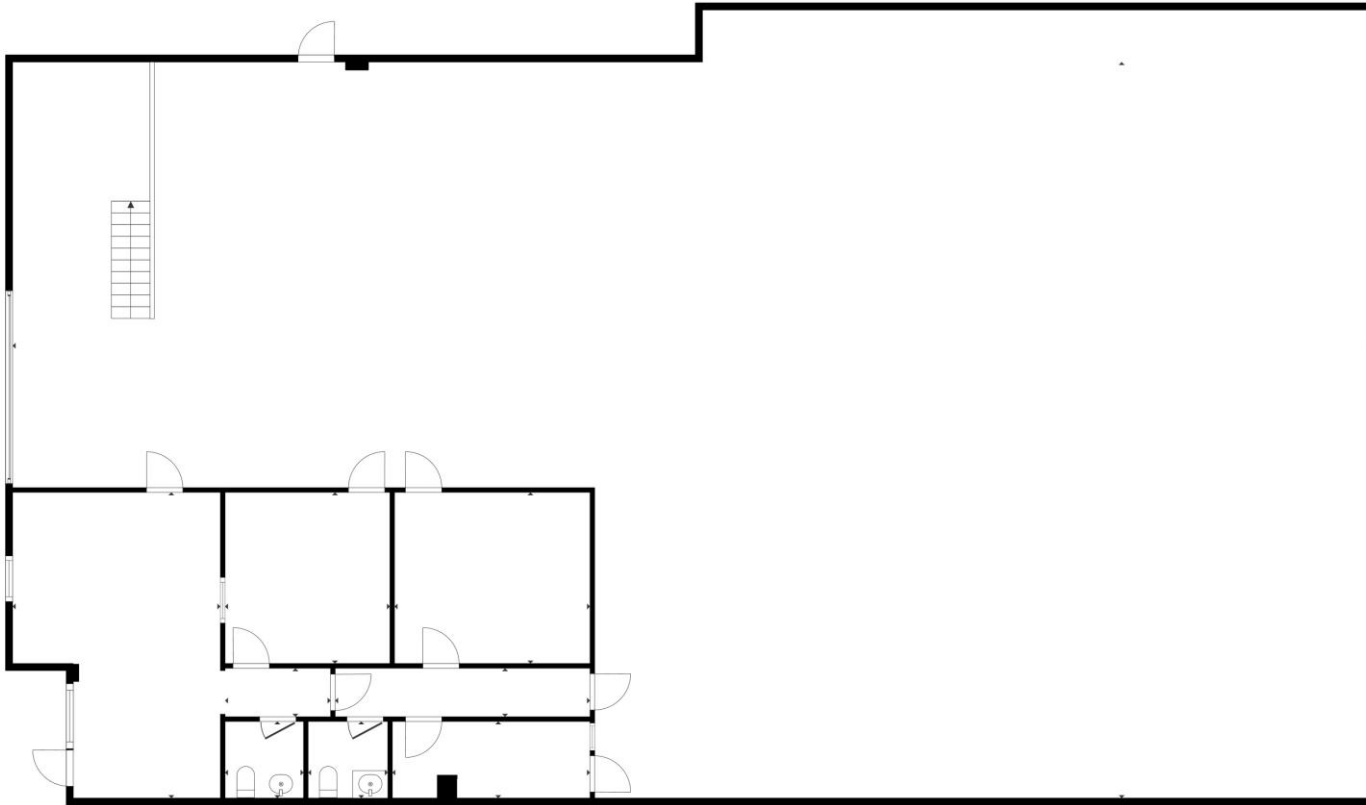
Evelyn Hamilton
818.742.1646
ehamilton@naicapital.com
CA DRE #01925029



PROPERTY FEATURES

- ❑ Great signage opportunity
- ❑ Office SF: 909 SF
- ❑ 1 – 8' x 10' Ground level loading door
- ❑ 14 Ft Clear
- ❑ 8 parking spaces with ample additional adjacent street parking available on Plummer St
- ❑ No CAM charges, tenant pays janitorial
- ❑ Excellent access to 118, US-101, I-405, I-5 & I-210
- ❑ Perfect for light industrial
- ❑ Zoning: MR2

FOR LEASE
21723 Plummer St., Chatsworth, CA 91311



FLOOR PLAN

No warranty, express or implied, is made as to the accuracy of the information contained herein. This information is submitted subject to errors, omissions, change of price, rental or other conditions, withdrawal without notice, and is subject to any special listing conditions imposed by our principals. Cooperating brokers, buyers, tenants and other parties who receive this document should not rely on it, but should use it as a starting point of analysis, and should independently confirm the accuracy of the information contained herein through a due diligence review of the books, records, files and documents that constitute reliable sources of the information described herein. Logos are for identification purposes only and may be trademarks of their respective companies. NAI Capital Commercial, Inc. CAL DRE Lic. #02130474

Dave Maron
818.613.2716
dmaron@naicapital.com
CA DRE #00620557

Evelyn Hamilton
818.742.1646
ehamilton@naicapital.com
CA DRE #01925029



No warranty, express or implied, is made as to the accuracy of the information contained herein. This information is submitted subject to errors, omissions, change of price, rental or other conditions, withdrawal without notice, and is subject to any special listing conditions imposed by our principals. Cooperating brokers, buyers, tenants and other parties who receive this document should not rely on it, but should use it as a starting point of analysis, and should independently confirm the accuracy of the information contained herein through a due diligence review of the books, records, files and documents that constitute reliable sources of the information described herein. Logos are for identification purposes only and may be trademarks of their respective companies. NAI Capital Commercial, Inc. CAL DRE Lic. #02130474

Dave Maron

818.613.2716

dmaron@naicapital.com

CA DRE #00620557

Evelyn Hamilton

818.742.1646

ehamilton@naicapital.com

CA DRE #01925029