

FOR LEASE/SALE
FREESTANDING BUILDING
303 S. PARKER ST, MARINE CITY, MI 48039

18,637 SF
AVAILABLE



PROPERTY DETAILS

LOCATION:	303 S. Parker St, Marine City, MI 48039
PROPERTY TYPE:	Freestanding
DATE AVAILABLE:	Immediately
SALES PRICE:	\$899,000.00
RENT:	\$7.00/SF NNN
NNN EXPENSE:	\$4.00/SF
PROPERTY TAXES:	\$16,769.87
BUILDING SIZE:	18,637 SF
LOT SIZE:	1.34 AC
LOT DIMENSIONS:	165' x 376'
AVAILABLE SPACE:	18,637 SF
ZONING:	B-2 (General Business)
TRAFFIC COUNT:	S Parker St (5,664 CPD) West Blvd (3,114 CPD)

EXCLUSIVELY LISTED BY:



LOUIS J. CIOTTI
Managing Director
lcotti@landmarkcres.com
248 488 2620



ALESSANDRO D. BORTOLOTTI
Associate
abortolotti@landmarkcres.com
248 488 2620

\$7.00/SF NNN

RENT

\$4.00/SF

NNN

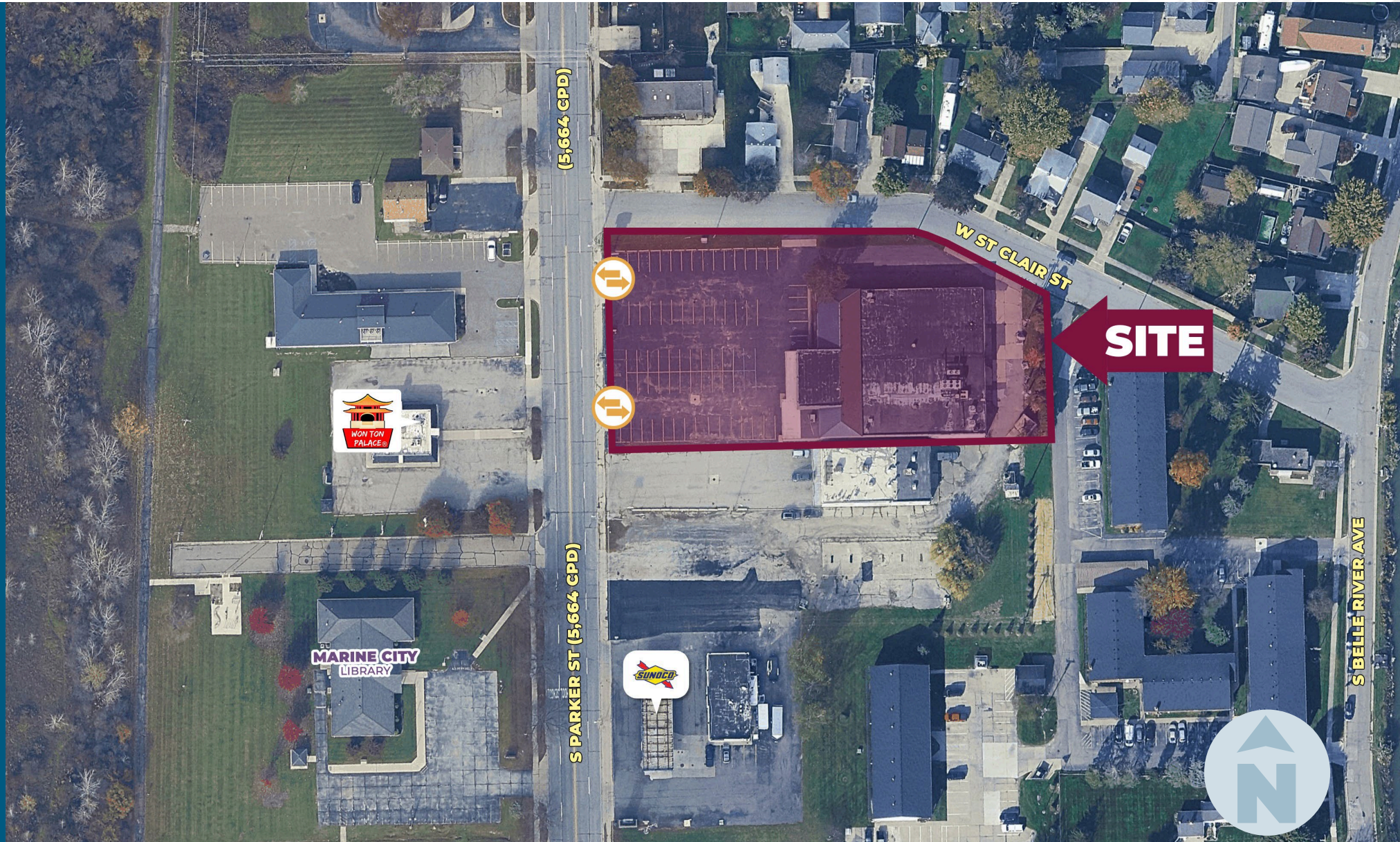
\$899,000.00

SALES PRICE

HIGHLIGHTS

- Over 18,000 sq. ft. Available
- Building is fire-suppressed
- Located on a high-visibility corner, ideal for retail brands seeking maximum exposure.
- Versatile Layout — Flexible space configuration supports everything from single large-format stores to multi-tenant setups.
- Seamless Operations — Grade-level loading and ample parking facilitate smooth logistics and customer flow.
- Enhanced Brand Signage — Eye-catching pylon signage and potential for exterior displays.
- Community-Centric Positioning — Proximity to the waterfront, parks, and dining makes it an attractive destination for local shoppers and tourists alike.
- Landlord motivated to make a deal

MICRO AERIAL



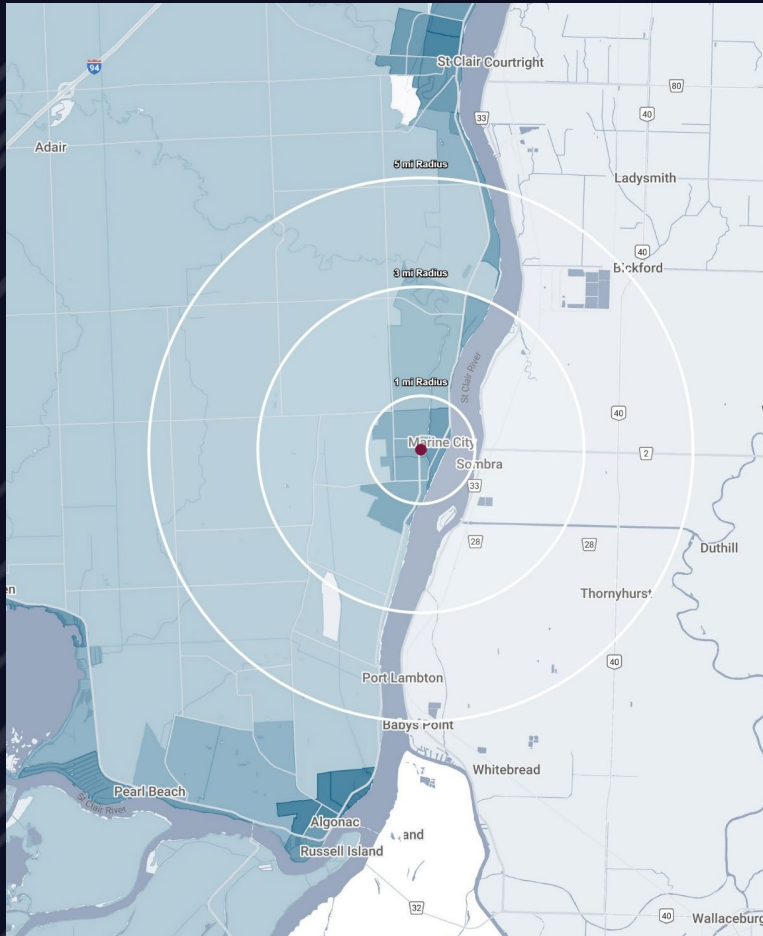
MACRO AERIAL



PLAT



DEMOGRAPHICS



FREESTANDING BUILDING

303 S. Parker St, Marine City, MI 48039

DEMOGRAPHICS

POPULATION

	1 MILE	3 MILE	5 MILE
2025 Estimated Population	4,291	8,076	11,196
2030 Projected Population	4,213	7,929	11,034
2020 Census Population	4,315	8,261	11,423
2010 Census Population	4,484	8,532	11,747
Projected Annual Growth 2025 to 2030	-0.4%	-0.4%	-0.3%
Historical Annual Growth 2010 to 2025	-0.3%	-0.4%	-0.3%

HOUSEHOLDS

2025 Estimated Households	1,918	3,576	4,785
2030 Projected Households	1,910	3,571	4,791
2020 Census Households	1,904	3,554	4,755
2010 Census Households	1,859	3,481	4,708
Projected Annual Growth 2025 to 2030	-	-	-
Historical Annual Growth 2010 to 2025	0.2%	0.2%	0.1%

RACE

2025 Est. White	95.3%	95.5%	95.6%
2025 Est. Black	0.7%	0.6%	0.6%
2025 Est. Asian or Pacific Islander	0.3%	0.3%	0.4%
2025 Est. American Indian or Alaska Native	0.3%	0.3%	0.2%
2025 Est. Other Races	3.3%	3.3%	3.2%

INCOME

2025 Est. Average Household Income	\$82,069	\$90,196	\$95,794
2025 Est. Median Household Income	\$67,607	\$70,147	\$75,390
2025 Est. Per Capita Income	\$36,803	\$40,081	\$41,137

BUSINESS

2025 Est. Total Businesses	211	281	359
2025 Est. Total Employees	1,945	2,539	3,679

CONTACT US



**LOUIS J.
CIOTTI**

Managing Director

lciotti@landmarkcres.com

248 488 2620



**ALESSANDRO D.
BORTOLOTTI**

Associate

abortolotti@landmarkcres.com

248 488 2620

LANDMARK
COMMERCIAL ▲ REAL ESTATE ▲ SERVICES

30500 Northwestern Hwy, Suite 200
Farmington Hills, MI 48334
248.488.2620
landmarkcres.com

LANDMARK COMMERCIAL REAL ESTATE SERVICES – Licensed Real Estate Brokers. The information above has been obtained from sources believed reliable. While we do not doubt its accuracy, we have not verified it and make no guarantee, warranty or representation about it. It is your responsibility to independently confirm its accuracy and completeness. Any projections, opinions, assumptions or estimates are used for example only and do not represent the current or future performance of the property. The value of this transaction to you depends on tax and other factors which should be evaluated by your tax, financial and legal advisors. You and your advisors should conduct a careful, independent investigation of the property to determine to your satisfaction, the suitability of the property for your needs.