

Flex Building | For Sale

WWM

Corporate Representation
Private Equity Services
Investment Real Estate

Commerce Park

23900 Mercantile Rd, Beachwood, OH 44122



Total Buildings SF

Warehouse / Lab SF

Office SF

12,318 SF

7,140 SF

5,178 SF

Year Built / Renovated

Purchase Price

Occupancy Status

1968 / 2008

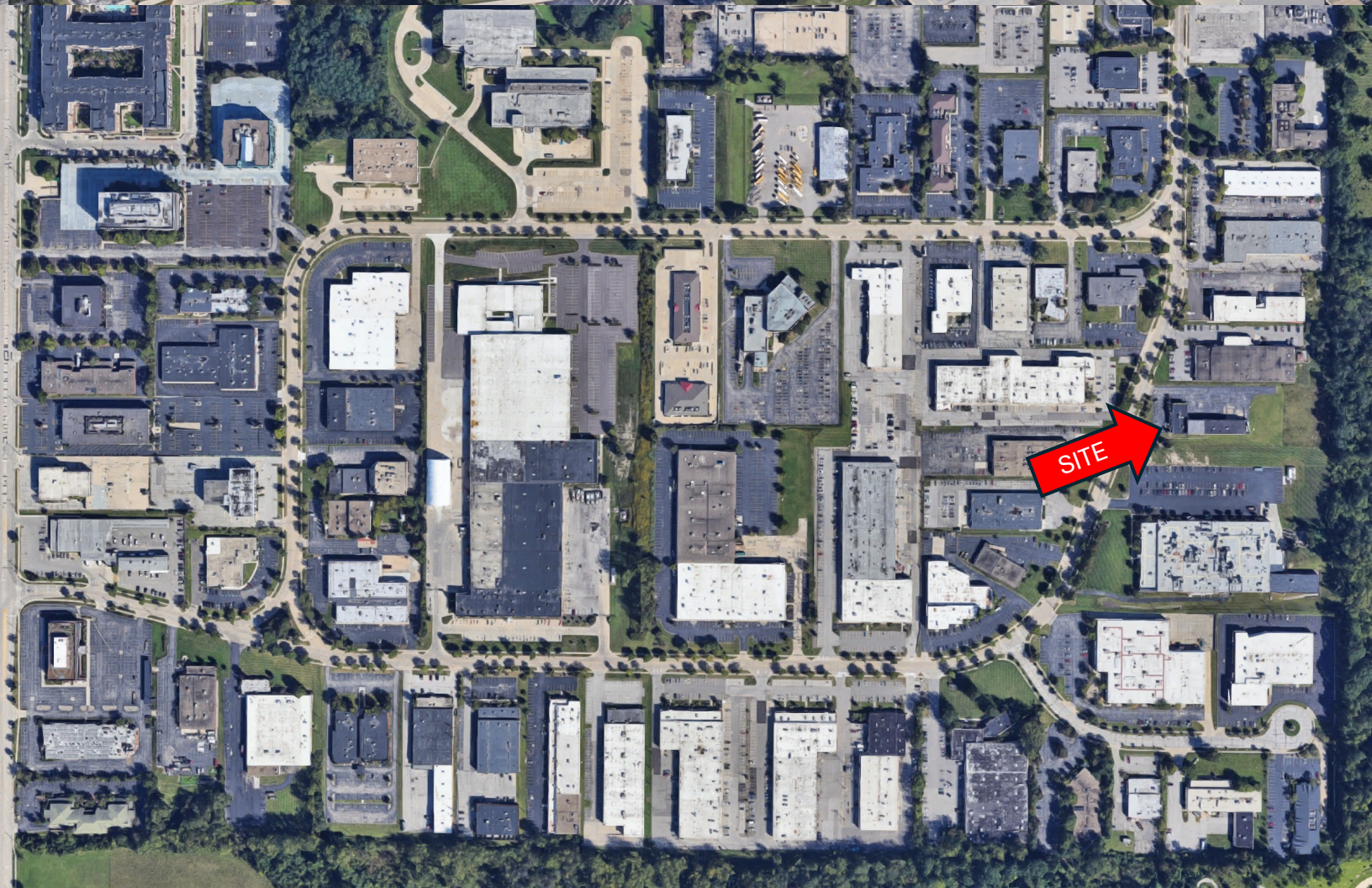
\$1,231,800

Vacant

Commerce Park

23900 Mercantile Rd, Beachwood, OH 44122

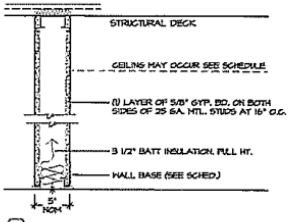
For Sale



Commerce Park

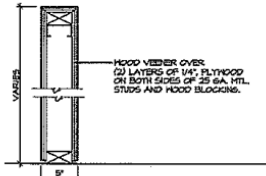
23900 Mercantile Rd, Beachwood, OH 44122

For Sale



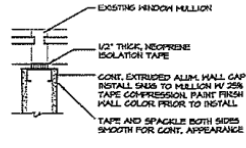
1 AS SHOWN, NON-RATED, NON-BEARING PARTITION
NOTE: ALL PARTITIONS TYPE I, UNLESS NOTED OTHERWISE

Partition Type
No Scale

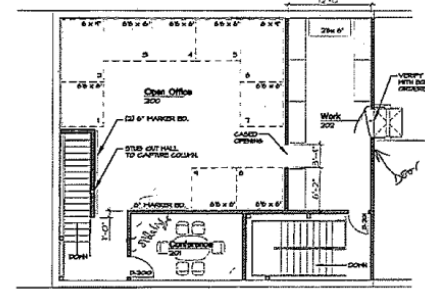


2 AS SHOWN, NON-RATED, NON-BEARING PARTITION

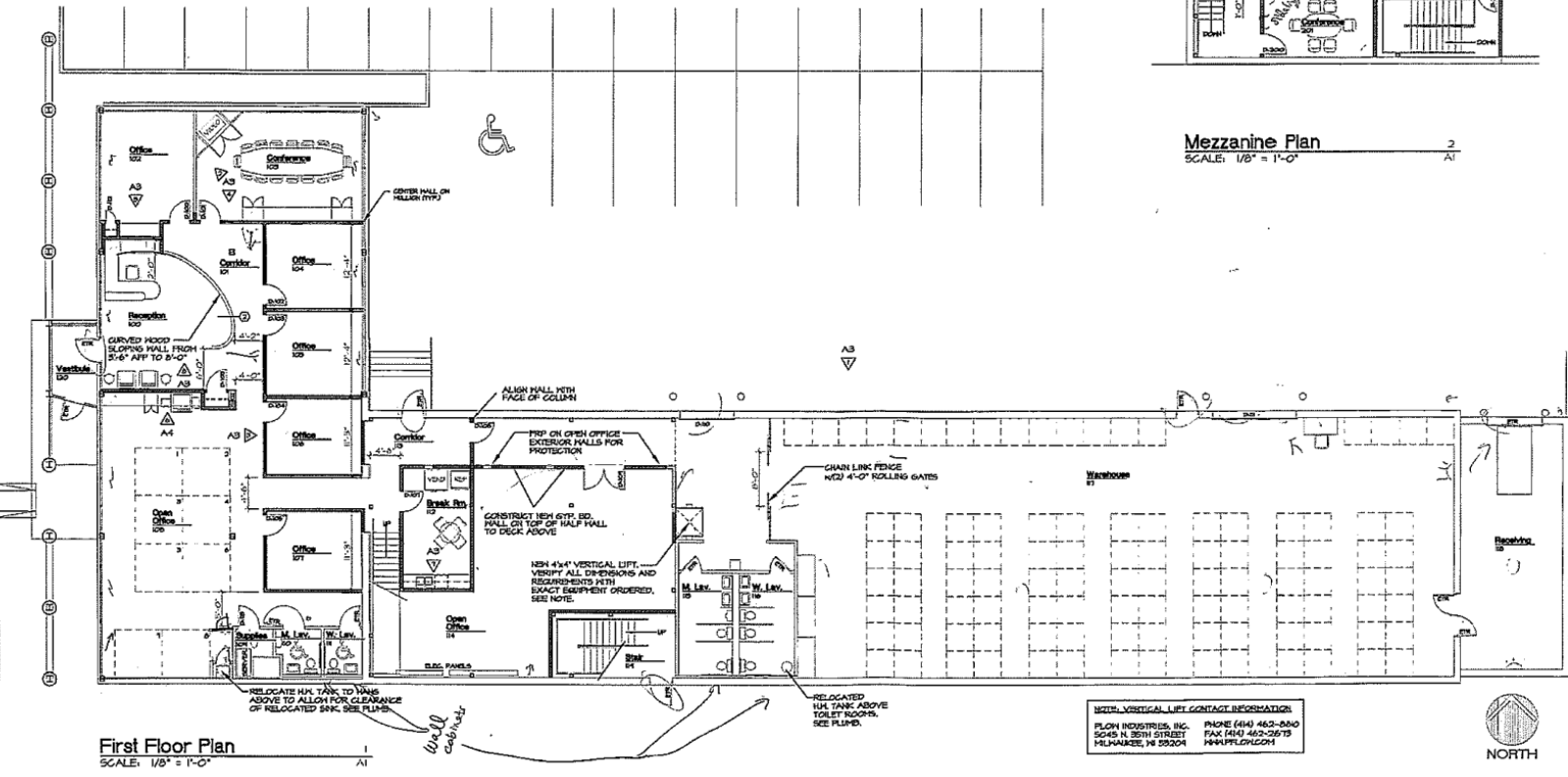
Partition Type
No Scale



Partition @ Window Mullion
No Scale



Mezzanine Plan
SCALE: 1/8" = 1'-0"
2 AT



First Floor Plan
SCALE: 1/8" = 1'-0"
1 AT

Additional Information:

- Clear height in warehouse is 18'.
- There are two drive-in doors and one dock.
- There is a second-floor mezzanine space for overflow office or lab space.
- Building owner is currently in the process of removing everything from the lab & warehouse area.
- All office furniture is available for purchase. Desks, chairs, cubicles, etc.

Commerce Park

23900 Mercantile Rd, Beachwood, OH 44122

For Sale

Photos

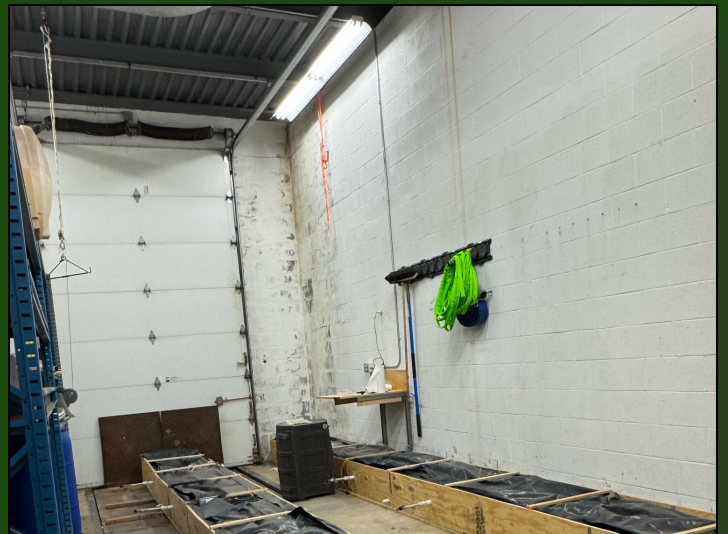


Commerce Park

23900 Mercantile Rd, Beachwood, OH 44122

For Sale

Photos



Commerce Park

23900 Mercantile Rd, Beachwood, OH 44122

For Sale



Contact Us:



Blair V. Wood, SIOR

216.337.3333 | DIRECT
bwood@wwmrealestate.com



Curtis Wood

216.339.2882 | DIRECT
cwood@wwmrealestate.com

<https://www.wwmrealestate.com/>

WWM

Corporate Representation
Private Equity Services
Investment Real Estate