

# Provision Industrial Commons - South Building

Available June 2025 | (7) Light Industrial Condos | \$375,000 Per Unit | 7110 NE 43rd Ave, Vancouver, WA





EXCLUSIVELY LISTED BY

---

**Nathan Drake**

First Vice President Investments

Office: Portland

Direct: 503.200.2046

[Nathan.Drake@marcusmillichap.com](mailto:Nathan.Drake@marcusmillichap.com)

License: OR #201218242

Marcus & Millichap



## OFFERING SUMMARY



Price Per Unit  
**\$375,000**



Lease Rate  
**\$18 NNN**



Price Per SF  
**\$340**

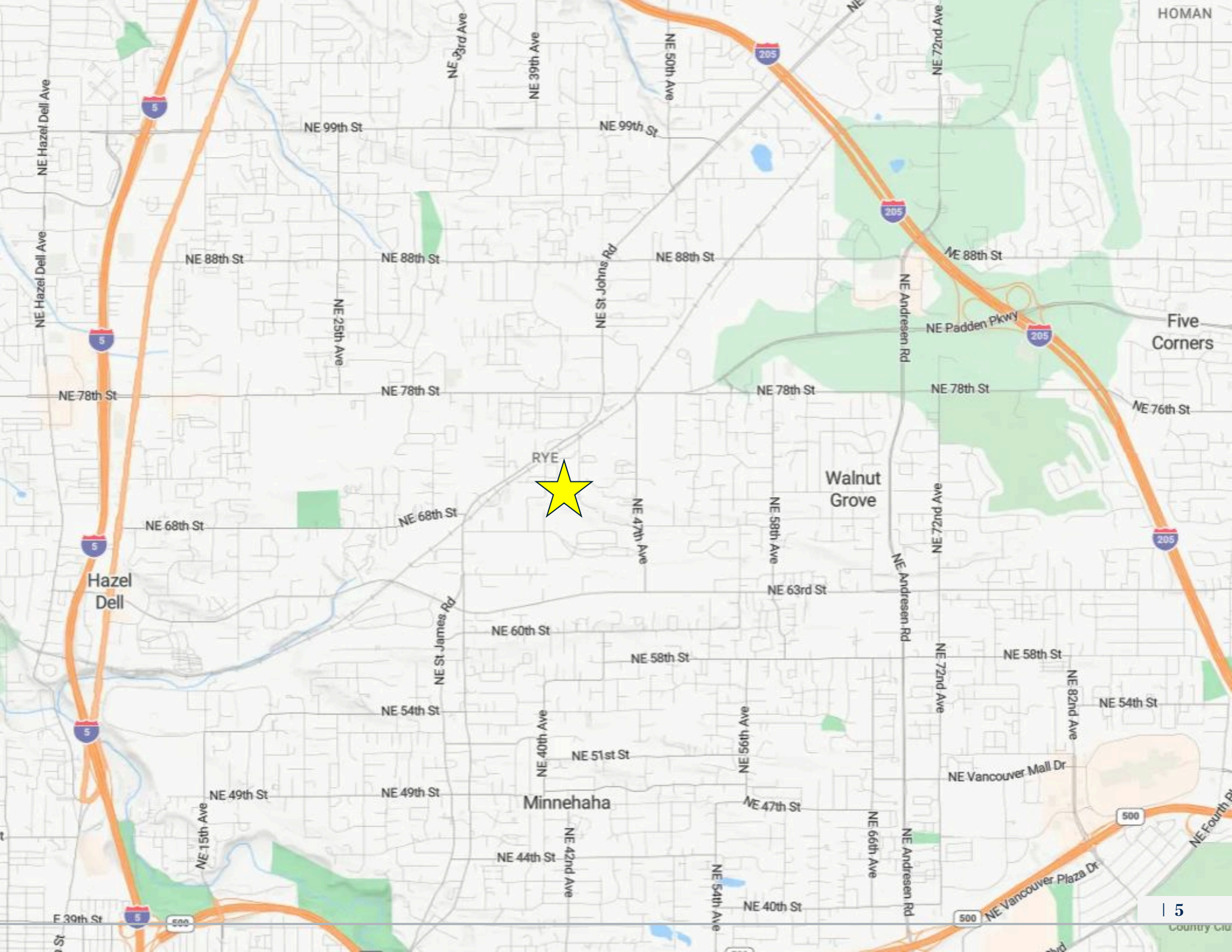
### FINANCIAL

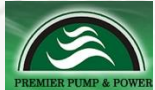
Price Per Unit	\$375,000
Leasable Area	1,103 SF
Price Per SF	\$340.14
Lease Rate	\$1,650 / month + NNNs

### PROPERTY

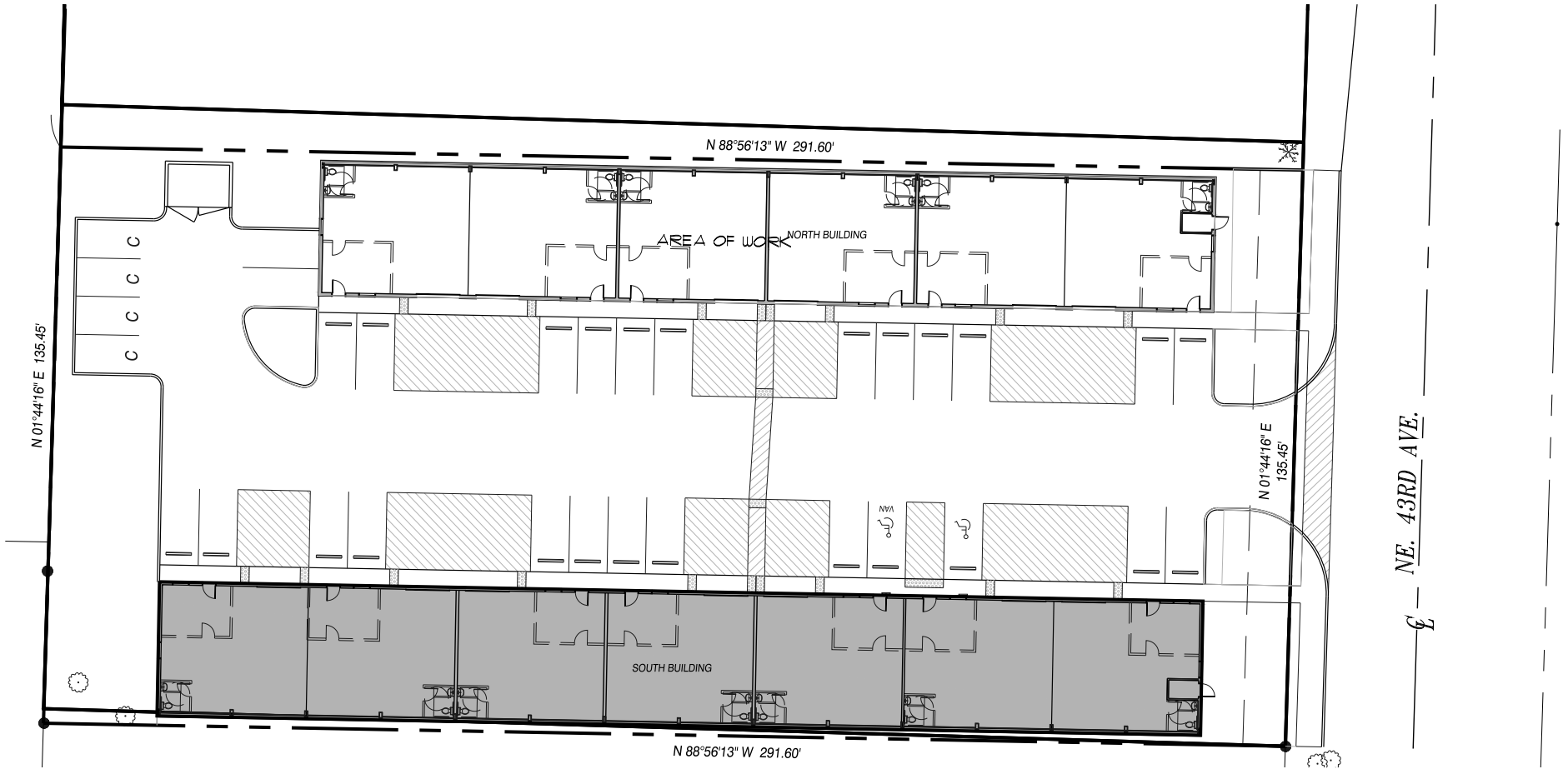
Year Built/Available	June 2025
Number of Suites	(7) Seven
Total Building Area	7,718 SF
Building Dimensions	245' x 31.5'
Single Suite Area	1,103 SF
Single Suite Dimensions	35' x 31.5'
Zoning	Light Industrial (IL)
Lot Size	39,640 SF / 0.91 AC
Parking	2.16 Per 1,000 SF
Sprinklers	Yes   Dry System





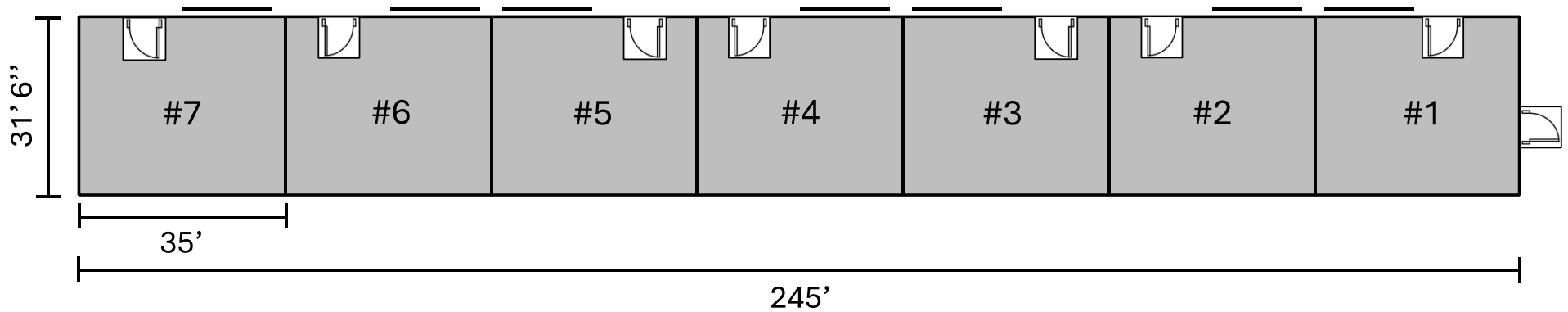


# Provision Industrial Commons - South Building // SITE PLANS



 **SITE PLAN**  
SCALE: 1" = 20'-0"

**SOUTH BUILDING**



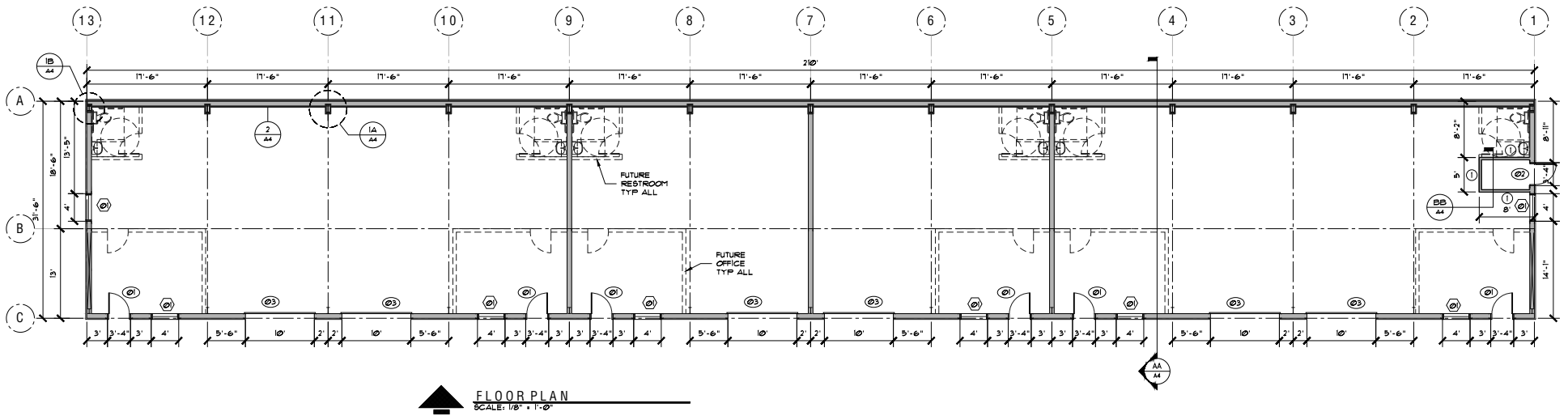
**LIGHT INDUSTRIAL (IL) ZONING**

The light industrial district is intended to provide for those less-intensive industrial uses which produce little noise, odor and pollution. It also provides for resource-based uses and service uses that are deemed compatible with light industrial uses.

For More Information About Allowed Uses and the Clark County Light Industrial (IL) Zone - [CLICK HERE](#)

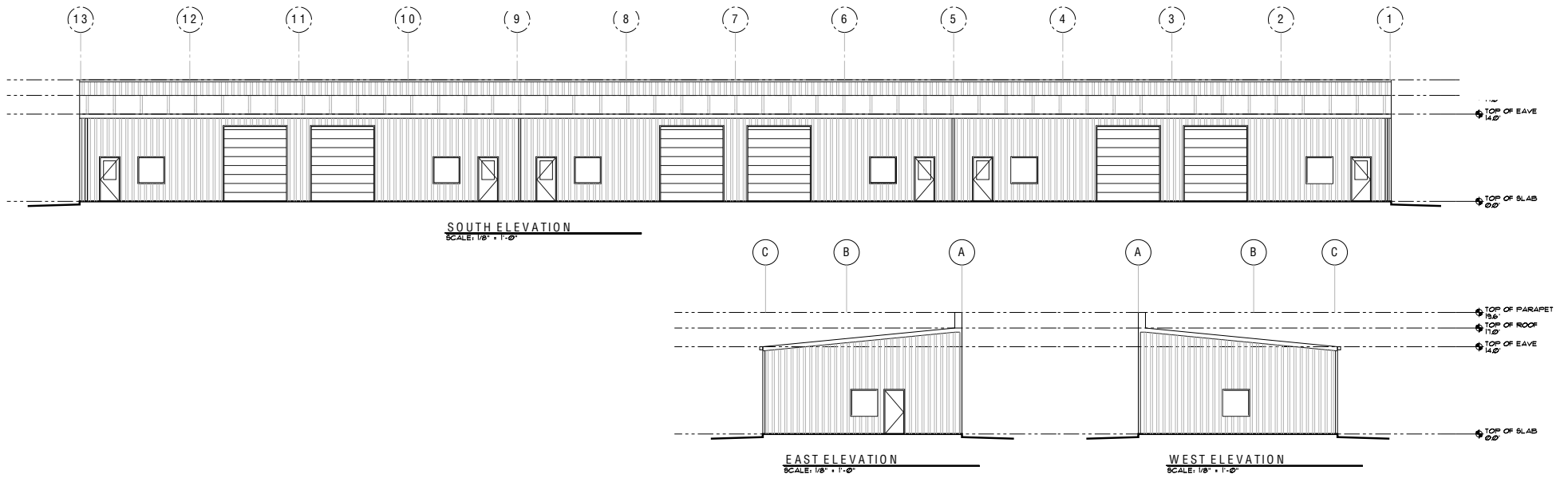


# Provision Industrial Commons - South Building // SITE PLANS



**FLOOR PLAN**  
SCALE: 1/8" = 1'-0"

# SITE PLANS // Provision Industrial Commons - South Building







## Provision Industrial Commons - South Building // DEMOGRAPHICS

POPULATION	1 Mile	3 Miles	5 Miles
<b>2028 Projection</b>			
Total Population	23,261	136,799	310,842
<b>2023 Estimate</b>			
Total Population	21,936	128,371	288,970
<b>2020 Census</b>			
Total Population	21,847	129,079	283,634
<b>2010 Census</b>			
Total Population	17,932	110,544	241,853
<b>Daytime Population</b>			
2023 Estimate	23,306	128,007	291,347
HOUSEHOLDS	1 Mile	3 Miles	5 Miles
<b>2028 Projection</b>			
Total Households	9,979	56,716	125,281
<b>2023 Estimate</b>			
Total Households	9,391	52,957	115,846
Average (Mean) Household Size	2.3	2.4	2.5
<b>2020 Census</b>			
Total Households	9,028	50,688	110,045
<b>2010 Census</b>			
Total Households	7,687	43,982	93,810

HOUSEHOLDS BY INCOME	1 Mile	3 Miles	5 Miles
<b>2023 Estimate</b>			
\$200,000 or More	2.3%	4.3%	6.1%
\$150,000-\$199,999	3.8%	5.5%	7.0%
\$100,000-\$149,999	13.5%	17.0%	19.4%
\$75,000-\$99,999	14.1%	15.7%	16.2%
\$50,000-\$74,999	21.0%	19.6%	17.8%
\$35,000-\$49,999	14.6%	13.1%	11.8%
\$25,000-\$34,999	9.6%	8.0%	7.2%
\$15,000-\$24,999	10.6%	8.1%	6.8%
Under \$15,000	10.5%	8.8%	7.7%
Average Household Income	\$68,117	\$81,993	\$93,673
Median Household Income	\$54,079	\$64,021	\$72,990
Per Capita Income	\$29,415	\$33,958	\$37,722
POPULATION PROFILE	1 Mile	3 Miles	5 Miles
<b>Population By Age</b>			
2023 Estimate Total Population	21,936	128,371	288,970
Under 20	24.1%	24.2%	24.3%
20 to 34 Years	26.5%	23.7%	22.1%
35 to 39 Years	8.0%	7.6%	7.4%
40 to 49 Years	10.8%	12.1%	12.6%
50 to 64 Years	13.4%	17.0%	18.0%
Age 65+	17.2%	15.5%	15.5%
Median Age	34.7	36.3	37.3
<b>Population 25+ by Education Level</b>			
2023 Estimate Population Age 25+	15,303	89,720	201,365
Elementary (0-8)	4.5%	3.3%	2.9%
Some High School (9-11)	8.1%	6.8%	5.9%
High School Graduate (12)	31.7%	29.4%	27.0%
Some College (13-15)	25.5%	26.6%	26.7%
Associate Degree Only	10.3%	10.5%	10.6%
Bachelor's Degree Only	13.7%	15.9%	17.9%
Graduate Degree	6.1%	7.5%	9.0%
<b>Travel Time to Work</b>			
Average Travel Time to Work in Minutes	24.0	26.0	26.0

## DEMOGRAPHICS // Provision Industrial Commons - South Building



### POPULATION

In 2023, the population in your selected geography is 288,970. The population has changed by 19.48 since 2010. It is estimated that the population in your area will be 310,842 five years from now, which represents a change of 7.6 percent from the current year. The current population is 49.5 percent male and 50.5 percent female. The median age of the population in your area is 37.3, compared with the U.S. average, which is 38.7. The population density in your area is 3,669 people per square mile.



### HOUSEHOLDS

There are currently 115,846 households in your selected geography. The number of households has changed by 23.49 since 2010. It is estimated that the number of households in your area will be 125,281 five years from now, which represents a change of 8.1 percent from the current year. The average household size in your area is 2.5 people.



### INCOME

In 2023, the median household income for your selected geography is \$72,990, compared with the U.S. average, which is currently \$68,480. The median household income for your area has changed by 46.07 since 2010. It is estimated that the median household income in your area will be \$85,172 five years from now, which represents a change of 16.7 percent from the current year.

The current year per capita income in your area is \$37,722, compared with the U.S. average, which is \$39,249. The current year's average household income in your area is \$93,673, compared with the U.S. average, which is \$100,106.



### EMPLOYMENT

In 2023, 155,704 people in your selected area were employed. The 2010 Census revealed that 58.6 percent of employees are in white-collar occupations in this geography, and 23 percent are in blue-collar occupations. In 2023, unemployment in this area was 5.0 percent. In 2010, the average time traveled to work was 25.00 minutes.



### HOUSING

The median housing value in your area was \$363,472 in 2023, compared with the U.S. median of \$268,796. In 2010, there were 53,187.00 owner-occupied housing units and 40,622.00 renter-occupied housing units in your area.



### EDUCATION

The selected area in 2023 had a higher level of educational attainment when compared with the U.S. averages. Only 9.0 percent of the selected area's residents had earned a graduate degree compared with the national average of 12.7 percent, and 17.9 percent completed a bachelor's degree, compared with the national average of 20.2 percent.

The number of area residents with an associate degree was higher than the nation's at 10.6 percent vs. 8.5 percent, respectively.

The area had more high-school graduates, 27.0 percent vs. 26.9 percent for the nation. The percentage of residents who completed some college is also higher than the average for the nation, at 26.7 percent in the selected area compared with the 20.1 percent in the U.S.



EXCLUSIVELY LISTED BY

---

**Nathan Drake**

First Vice President Investments

Office: Portland

Direct: 503.200.2046

[Nathan.Drake@marcusmillichap.com](mailto:Nathan.Drake@marcusmillichap.com)

License: OR #201218242

Marcus & Millichap