



I-77



Lease rate:

\$6.00 PSF NNN

Chuck Salley, SIOR

Managing Director
+1 803 401 4266
chuck.salley@colliers.com

Thomas Beard, SIOR

Vice President
+1 803 401 4247
thomas.beard@colliers.com

John Peebles, SIOR

Senior Brokerage Associate
+1 803 401 4226
john.peebles@colliers.com

1301 Gervais Street, Suite 600
Columbia SC 29201
P: +1 803 254 2300
colliers.com

110 Belk Court Blythewood, SC 29016

±25,200 SF - ±84,625 SF industrial space

Available space: ±84,625 SF
Subdividable to ±25,200 SF

Acreage: ±10 AC

HVAC: Gas-fired units

Parking: 183 paved spaces

Utilities: Electricity/Gas: Dominion
Energy | Water/Sewer: City of Columbia

Year built: 2004- Refurbished 2022

Truck docks: (8) dock-high doors and
(2) drive-in doors

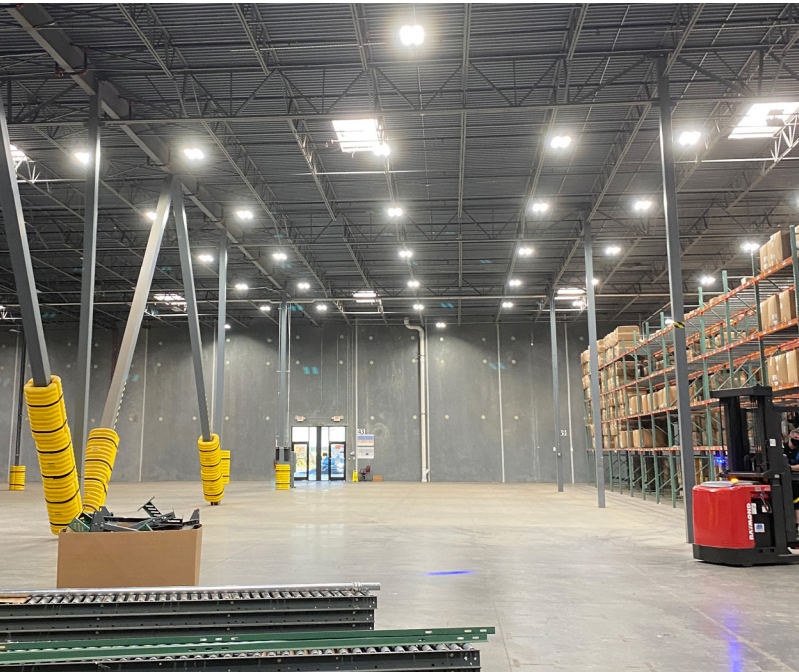
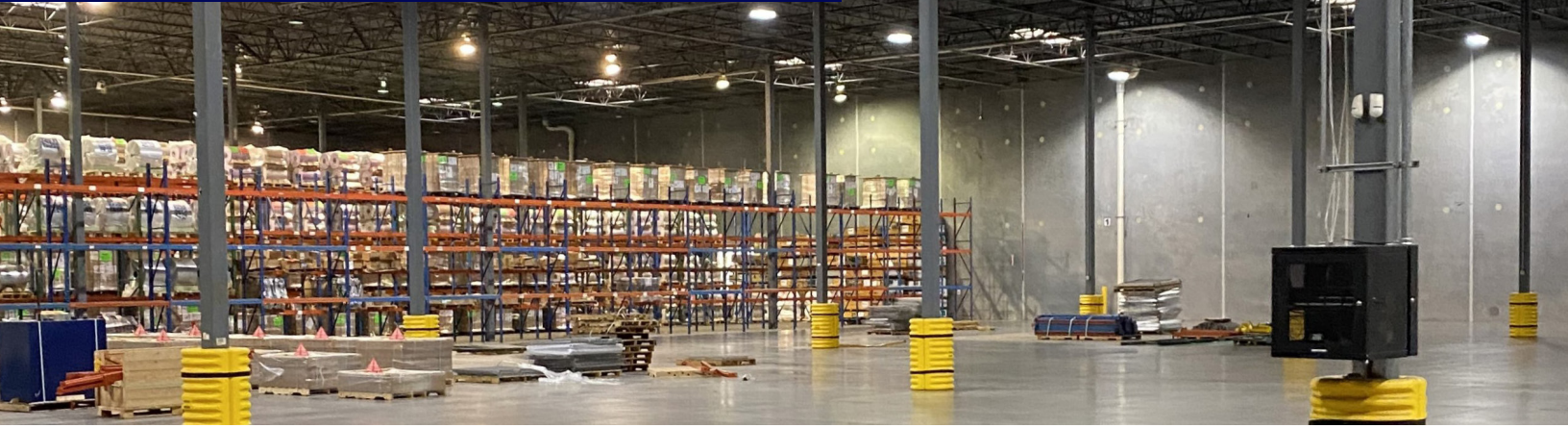
Clear Height: 28' minimum

Construction: 6" concrete slab

Sprinklers: ESFR system

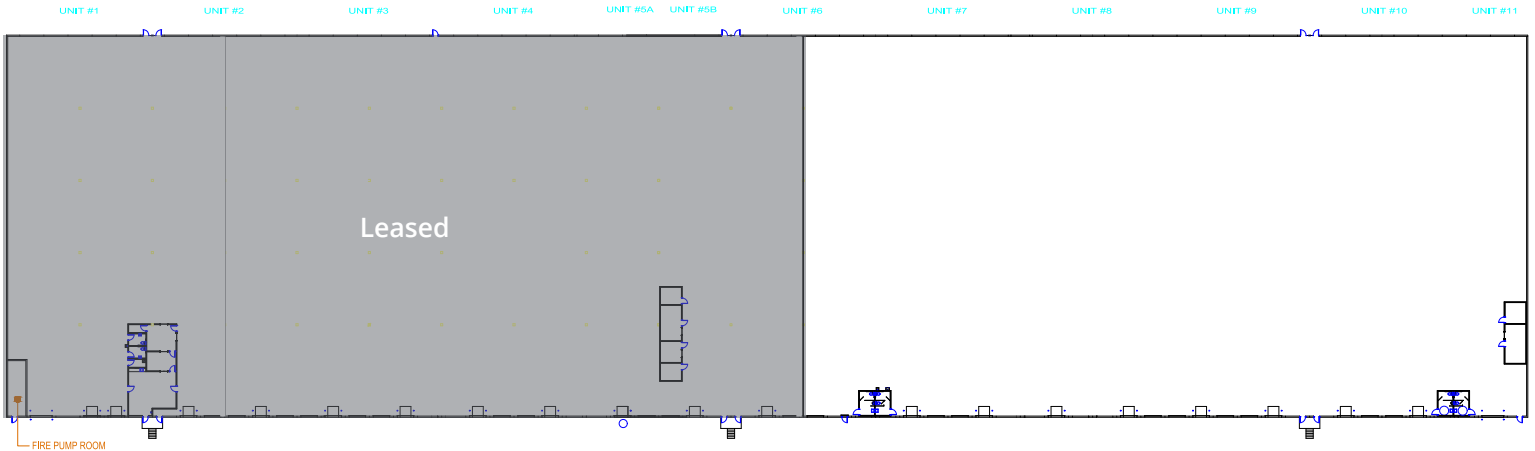
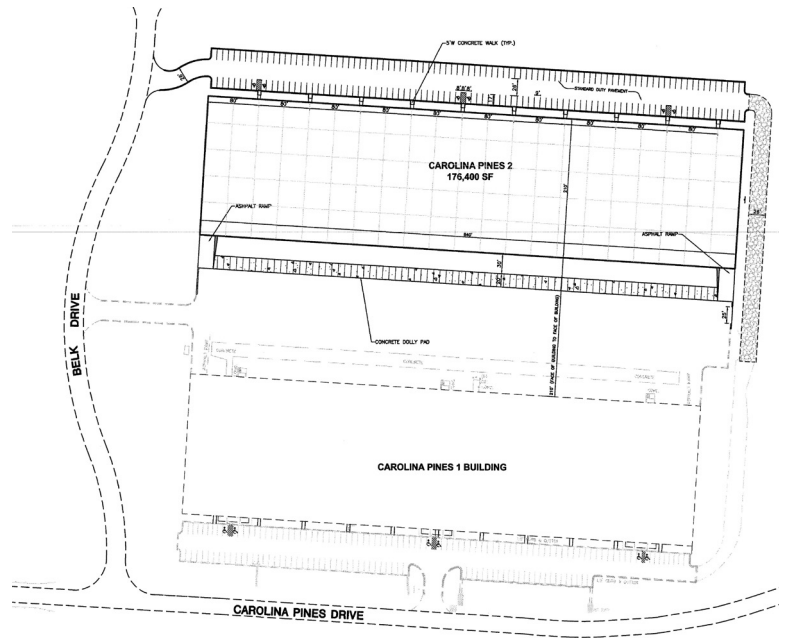
Copyright © 2024 Colliers International. Information herein has been obtained from sources deemed reliable, however its accuracy cannot be guaranteed. The user is required to conduct their own due diligence and verification.

Property Gallery



Floor plan

Hover to view

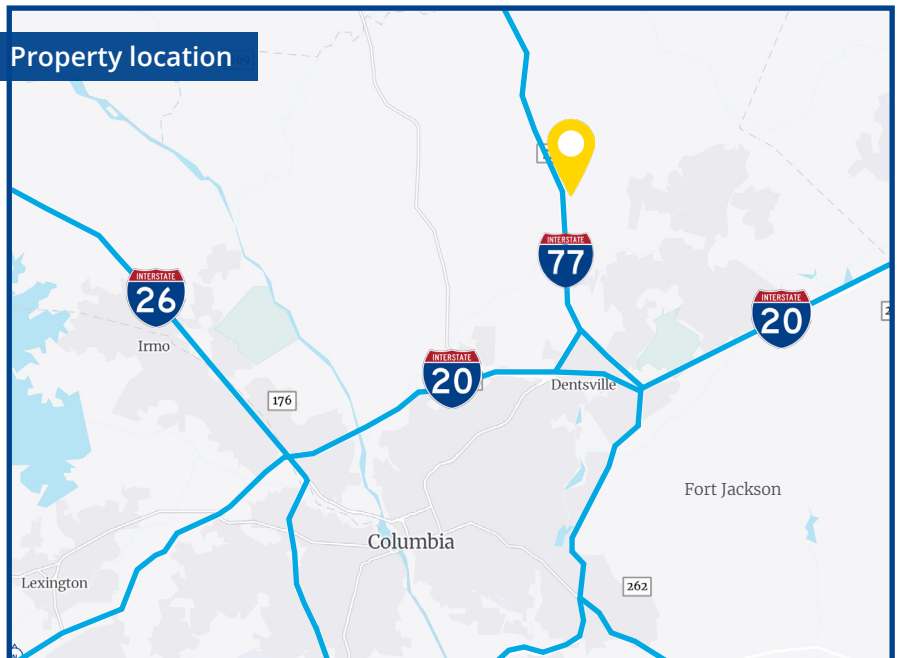


PLAN VIEW

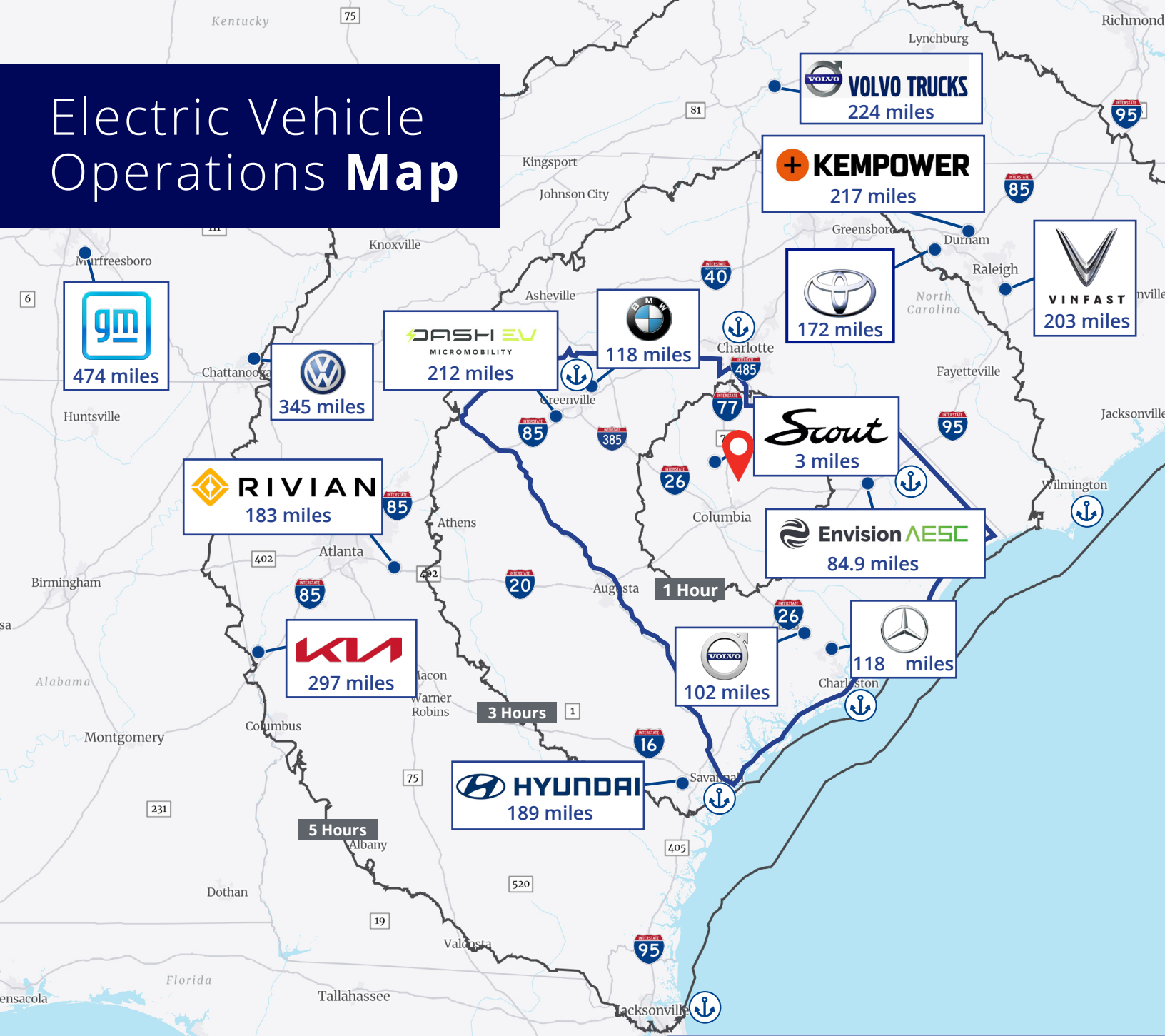
Distances

Interstate 77	±0.7 miles
Interstate 20	±9.2 miles
Interstate 26	±17.5 miles
Columbia Metropolitan Airport	±30.6 miles
Charlotte Douglas International Airport	±80.3 miles
Port of Charleston	±136 miles

Property location



Electric Vehicle Operations Map



COLUMBIA, SC

Three major interstates run through Columbia: I-26, I-20 and I-77. I-95 connects to I-20 and I-26 for easy access to anywhere on the Eastern corridor.

Columbia's ease of accessibility is a primary factor in site selection for both businesses and residents and many are drawn to Columbia due to its convenient location. The Columbia, SC Metropolitan Statistical Area (MSA) is made up of six counties centrally located in South Carolina, halfway between the Port of Charleston and South Carolina Inland Port in the Greenville-Spartanburg market.

PORT DISTANCES

- Inland Port Charlotte: ±85 miles
- Inland Port Dillon: ±108 miles
- Inland Port Greer: ±119 miles
- Port of Charleston: ±136 miles
- Port of Savannah: ±176 miles
- Port of Wilmington: ±207 miles
- JAXPORT: ±304 miles



Scout



JTEKT

Husqvarna

OWENS CORNING

PATTERSON DENTAL

amcor

Constantia Flexibles

Department of Public Safety

CHARTER NEX FILMS

spirax sarco

Coca-Cola

belk

XERXES amazon

purePOWER TECHNOLOGIES

EXIT 24

Constantia Flexibles



IRON MOUNTAIN®

INTERSTATE 77

ipg intertape polymer group®

lulapoe



Chuck Salley, SIOR
 Managing Director
 +1 803 401 4266
 chuck.salley@colliers.com

Thomas Beard, SIOR
 Vice President
 +1 803 401 4247
 thomas.beard@colliers.com

John Peebles, SIOR
 Senior Brokerage Associate
 +1 803 401 4226
 john.peebles@colliers.com