



AMC CLASSIC

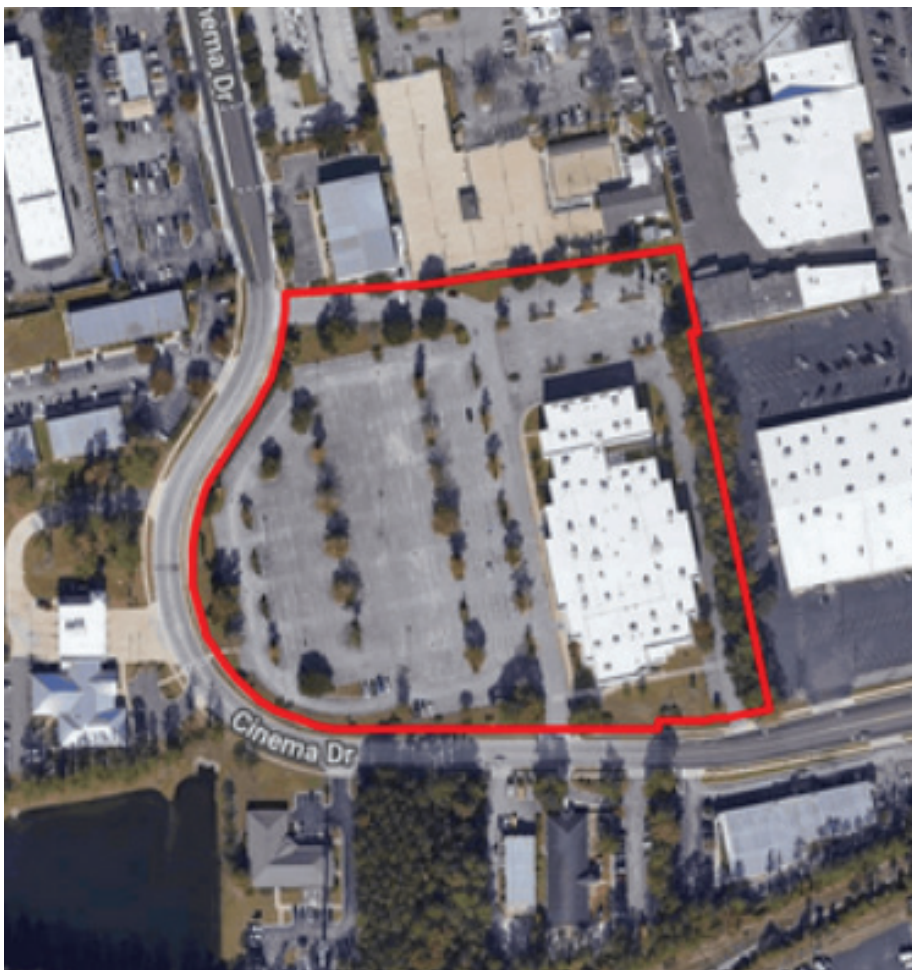
111 Cinema Dr
Wilmington, NC 28403

THE
RMR
GROUP

CAROLINA COMMERCIAL INVESTMENT PROPERTIES
3808 PARK AVE, WILMINGTON, NC 28403
910-297-9572

CAROLINA
COMMERCIAL
INVESTMENT PROPERTIES
COMMERCIAL REALTY ADVISORS

TABLE OF CONTENTS



- 3 Executive Summary
- 4 Property Information
- 6 Property Photos
- 7 Demographics
- 8 Retail Submarket Overview
- 9 Aerial View
- 10 Local Information
- 12 Contact Information

EXECUTIVE SUMMARY



+/-8.64 acres of centrally located in the heart of Wilmington. Cinema Dr acts as a collector street for downtown traffic from Kerr Ave. The cinema will be vacated by mid Nov. Building is approximately +/-54,662 with high ceilings. RB Zoning allows automotive use, assembly, amusement-rec center - very flexible land use. Owner seeking absolute net lease.

PROPERTY INFORMATION

GENERAL PROPERTY INFORMATION

Type:	For Lease
Space Use:	Retail, former Movie Theatre
Available Space:	+/-54,662 SF
Rate:	Call for Pricing
Lease Terms:	Absolute Net

BUILDING DETAILS

Sub Type:	Retail
Building Status:	Existing
Building Size:	+/-54,662 SF
Land Size:	+/- 8.64 Acres / +/-376,271 SF
Occupancy Type:	Single Tenant

PROPERTY INFORMATION

AREA & LOCATION

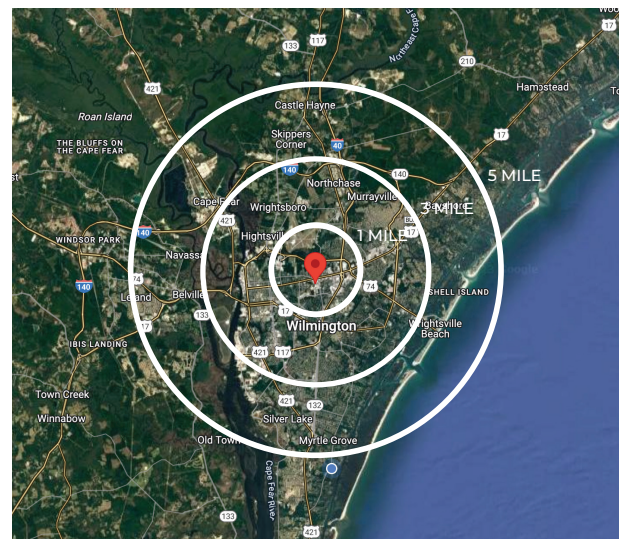
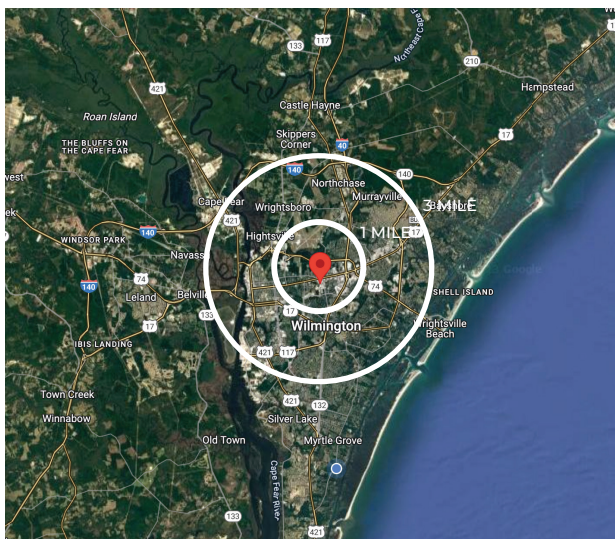
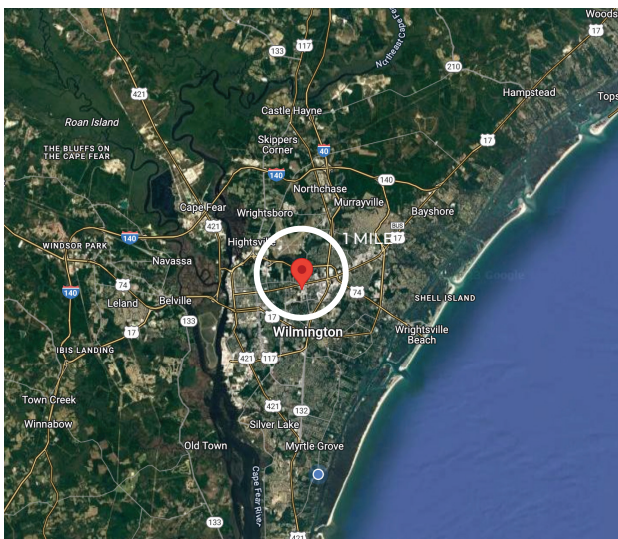
Address:	111 Cinema Dr, Wilmington, NC 28403
Zoning:	RB
County:	New Hanover
Parcels:	3138-40-7350.000
Name:	AMC Classic



PROPERTY PHOTOS



DEMOGRAPHICS

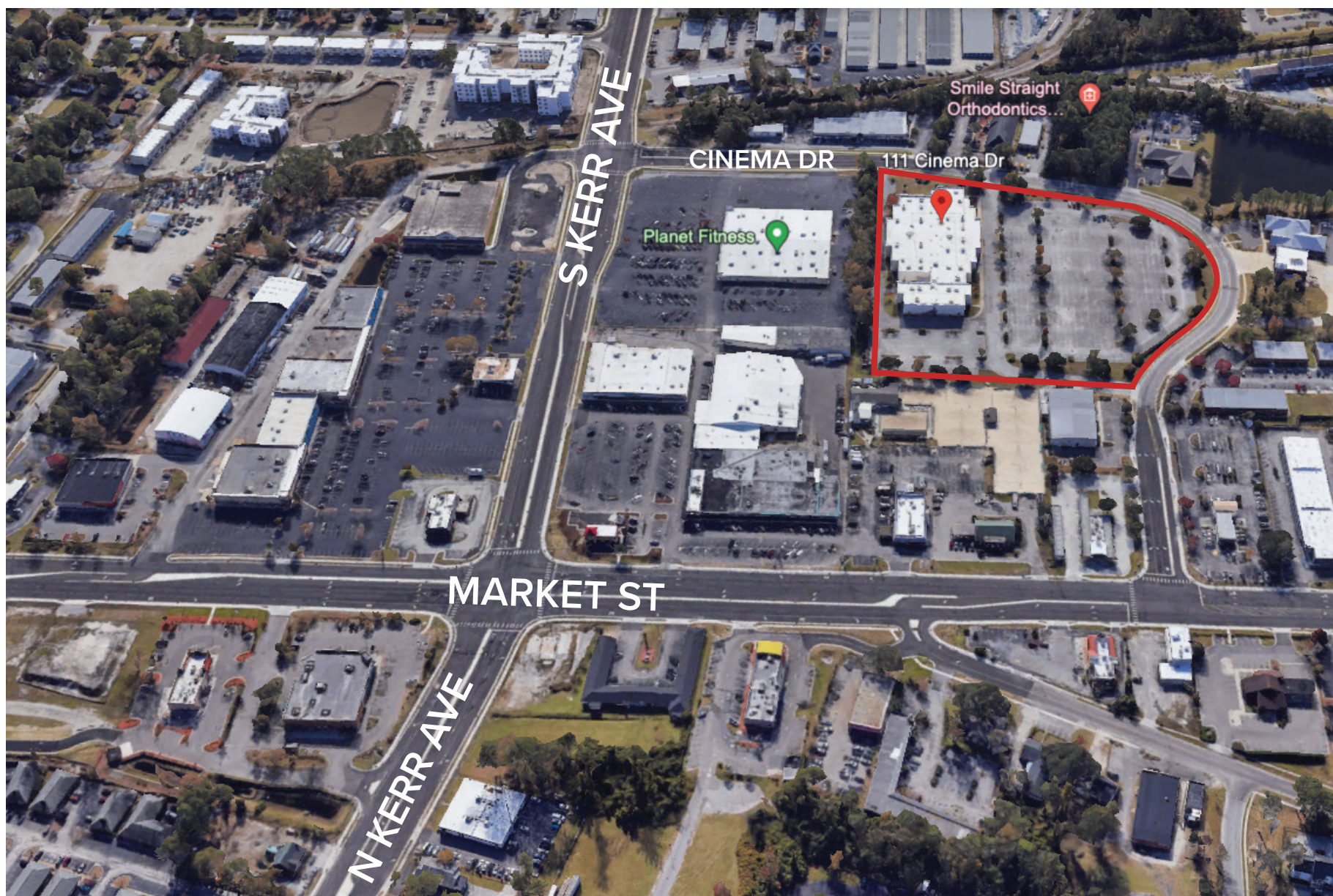


	1 MILE	3 MILE	5 MILE
ESTIMATED POPULATION	8,679	53,639	114,703
ESTIMATED HOUSEHOLDS	7,893	33,738	70,877
AVERAGE HH INCOME	\$26K	\$49K	\$57K
EMPLOYMENT	4,243	26,072	55,611

RETAIL SUBMARKET OVERVIEW



AERIAL VIEW



LOCAL INFORMATION



LOCAL INFORMATION

From the downtown river district and Riverwalk that skirts the storied Cape Fear River to the new and modern facilities that are remaking the riverfront's skyline, Wilmington, NC is a must-see southern destination. Rivaling Charleston and Savannah in its charm and history and voted America's Best Riverfront, Wilmington serves as the portal to all this area has to offer. You'll love Wilmington's riverfront, historic neighborhoods and everything in between.

Location: Wilmington is located on the coast of North Carolina with island beaches Carolina Beach, Kure Beach and Wrightsville Beach nearby. It is about an hour from Jacksonville, NC, 2 hours from Raleigh, NC and an hour and a half from Myrtle Beach. Wilmington has easy access to major highways such as HWY 74, I-40 and HWY 17.

Attractions: Wilmington is full of attractions like the historic district, shopping and nightlife, downtown cuisine, historic tours and cruises, arts, theater, parks, gardens and midtown shopping, dining and family fun.



CONTACT INFORMATION



PJ Doherty, CCIM

Commercial Specialist, Consulting, BIC

Phone: 910-297-9572

Email: pj@carolinacip.com

THE
RMR
GROUP

Carolina Commercial Investment Properties is a Certified Commercial Investment Member (CCIM) in the commercial and investment real estate industry.

**CAROLINA
COMMERCIAL**
INVESTMENT PROPERTIES
COMMERCIAL REALTY ADVISORS