

# 17,564 SF FOR SUBLEASE

721 N Great Southwest Pkwy  
Arlington, TX 76011

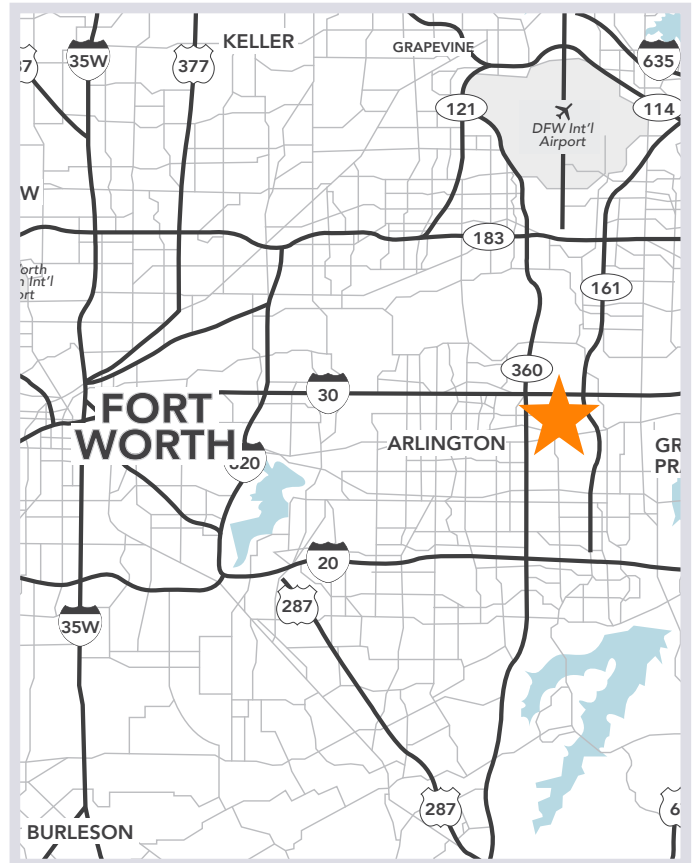


## Property Features

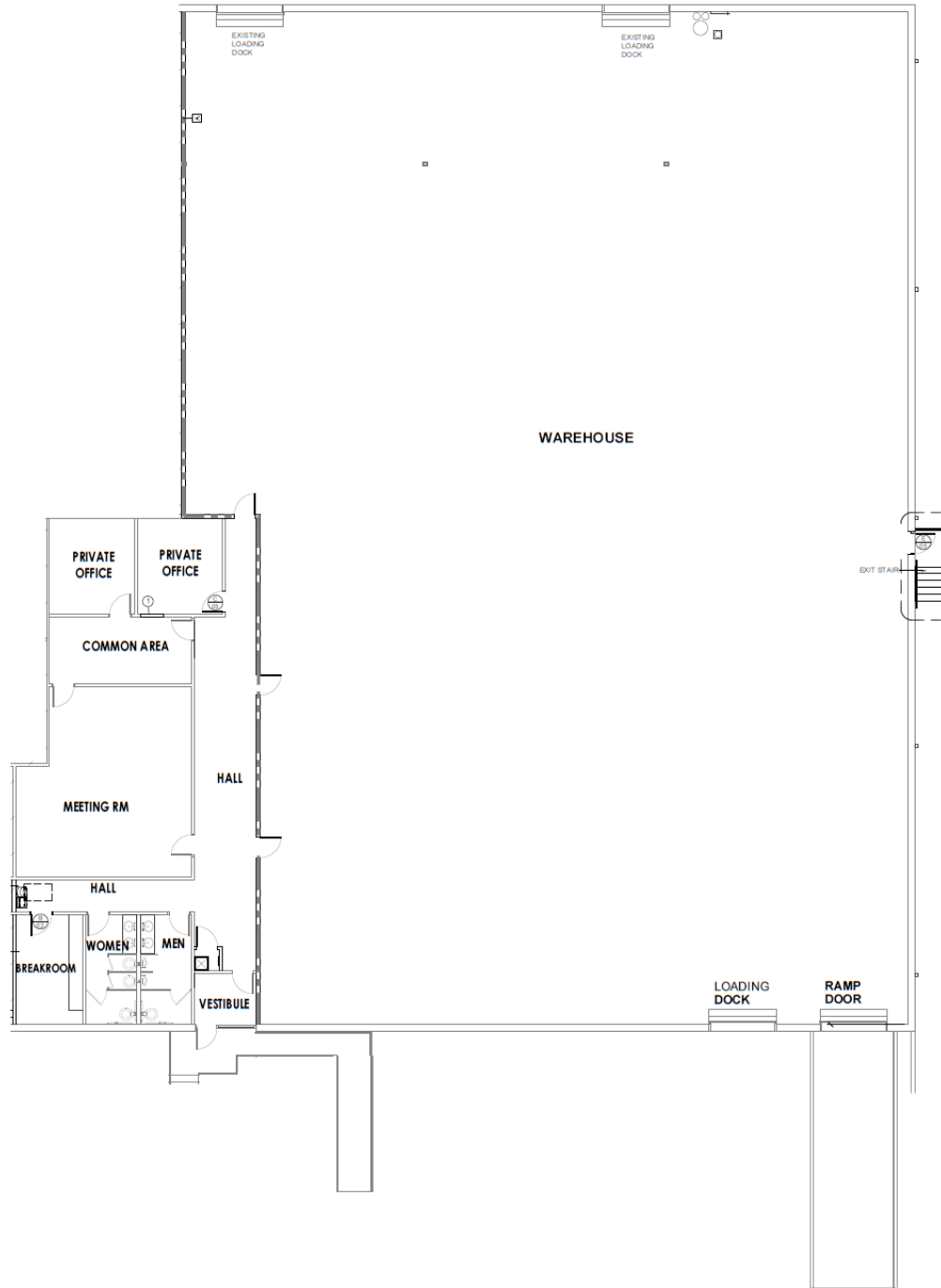
- Available Space: 17,564 SF
- Office Space: 2,250 SF
- Ceiling Height: 18'
- Dock Doors: 1
- Ramp Doors: 1
- Move-In Ready
- Sublease through May 2028

## Drive Times

- Downtown Dallas: 15.4 miles / 17 min
- Downtown Fort Worth: 18.1 miles / 20 min
- DFW Airport: 9.2 miles / 12 min
- Easy Access to SH-360, I-30, and I-20



721 N Great Southwest Pkwy  
Arlington, TX 76011



**MATT BLACKBURN**  
817.502.8179  
matt.blackburn@streamrealty.com

