

Flex Space for Sub-Lease +/- 3,570 Square Feet

175 Clearbrook Road, Elmsford, NY Superior Warehouse/Office Location!



Property Highlights:

- +/- 3,570 SF Flex Space for Sub-Lease Consisting of Spacious Warehouse & Nicely Built Out Office Space
- Warehouse Area is Heated and Sprinklered with a Loading Dock
- Office Area is Air Conditioned, Fully Furnished & Move-In Ready
- Private Restrooms & Kitchenette Area
- Exceptionally Located
- Highly Convenient to all Major Roadways
- Very Well-Maintained Property
- Ample Parking Available
- Bus Accessible
- Sub-Lease Term Through October 31, 2028
Longer Lease Term Possible

For more information or to view this property, contact 914.422.0100

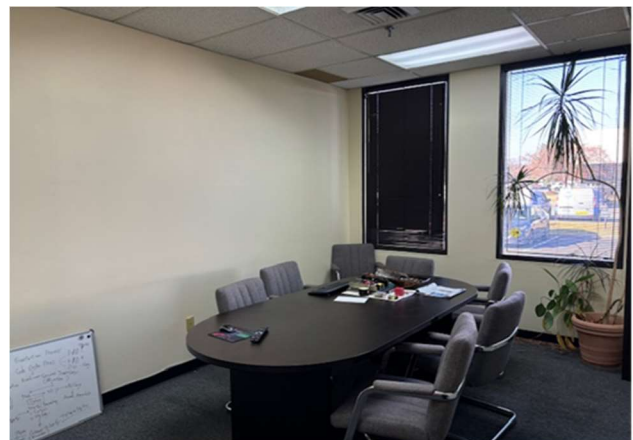
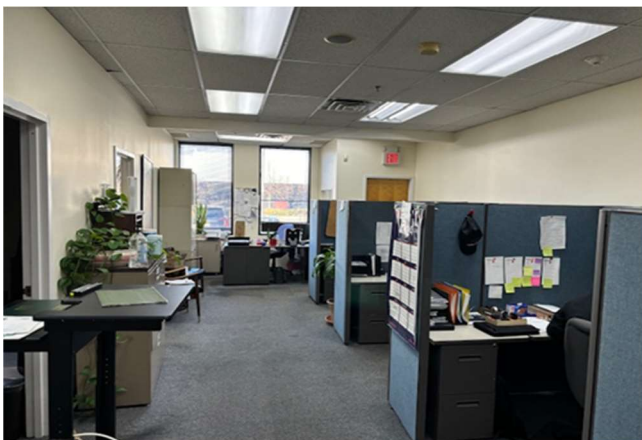
David Richman at x 13 or David@Rakowgroup.com

Lauren Rones-Payne, 914-912-6631, Lauren@Rakowgroup.com

10 New King Street, White Plains, NY 10604 | RakowGroup.com

RAKOW

COMMERCIAL REALTY GROUP



For more information or to view this property, contact 914.422.0100

David Richman at x 13 or David@Rakowgroup.com

Lauren Rones-Payne, 914-912-6631, Lauren@Rakowgroup.com

10 New King Street, White Plains, NY 10604 | RakowGroup.com

No warranty of representation, express or implied, is made as to the accuracy of the information contained herein, and same is submitted subject to errors, omissions, change of price, rental or other conditions, withdrawal without notice, and to any specific listing conditions, imposed by our principals.