

Available  
For Sale

Price  
Reduction

53,100 SF  
Industrial/  
Manufacturing  
Facility

## 506-508 Pasadena Avenue

Crest Hill, Illinois 60403

### PROPERTY HIGHLIGHTS

Well-maintained, 53,100 SF freestanding industrial/manufacturing facility located on 2.14 acres in Will County. Offers 4,300 SF of office space, 1 exterior dock, 4 drive-in doors and 50+ car parking spaces.



53,100 SF  
AVAILABLE FOR SALE



14' - 18'  
CEILING HEIGHT



1 TRUCK DOCK  
4 DRIVE-IN DOORS



HEAVY POWER  
5,400 AMPS  
240-600V



PARTIAL  
WAREHOUSE A/C



ASKING PRICE:  
~~\$3,398,400~~  
\$3,050,000

### Broker Contact Info

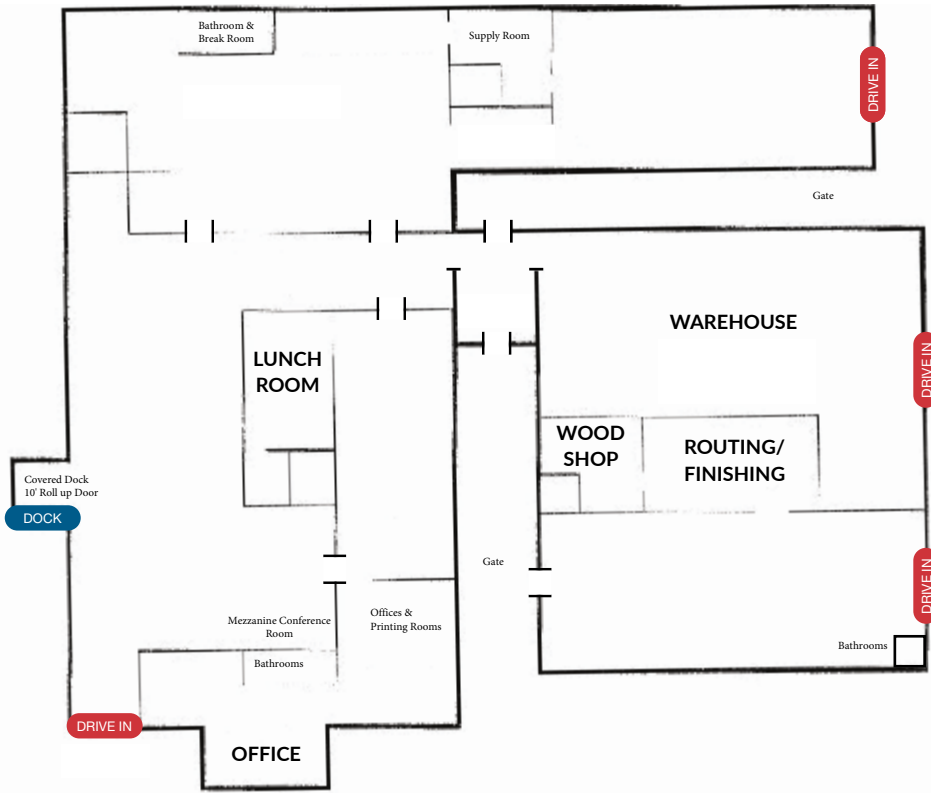
Steve Connolly  
+1 630 693 0642  
sconnolly@hiffman.com

Michael Kraft  
+1 630 693 0661  
mkraft@hiffman.com

Mark Moran  
+1 630 693 0656  
mmoran@hiffman.com

One Oakbrook Terrace  
Suite 400  
Oakbrook Terrace, Illinois 60181  
+1 630 932 1234

## SITE PLAN



CALL A NAI HIFFMAN BROKER TODAY!

### Steve Connolly

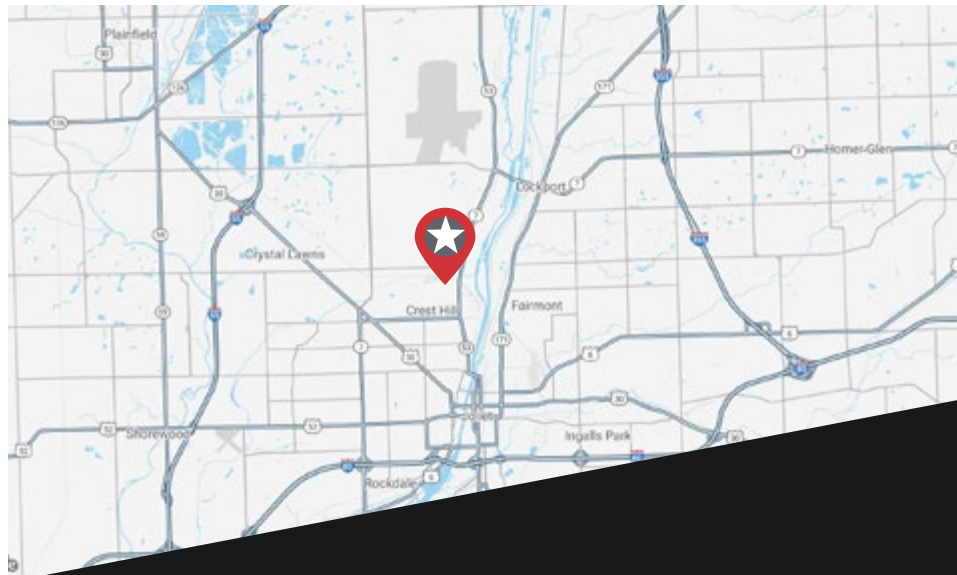
+1 630 693 0642  
sconnolly@hiffman.com

### Michael Kraft

+1 630 693 0661  
mkraft@hiffman.com

### Mark Moran

+1 630 693 0656  
mmoran@hiffman.com



One Oakbrook Terrace  
Suite 400  
Oakbrook Terrace, Illinois 60181  
+1 630 932 1234