



# For Sale

Lots 5 & 6

Emmitsburg, MD 21727

**Rick Williamson**

Managing Director

[rick.williamson@jll.com](mailto:rick.williamson@jll.com)

+1 410 404 5522

**Dominic Digiovannantonio**

Vice President

[dom.digi@jll.com](mailto:dom.digi@jll.com)

+1 443 452 1505

**Rob Freedman**

Managing Director

[rob.freedman@jll.com](mailto:rob.freedman@jll.com)

+1 410 952 9444



Lots 5 & 6 – Creamery Court  
Emmitsburg, MD

## Highlights:

### Size:

- Lot 5- 14.02 Acres
- Lot 6- 6.98 Acres
- Total acreage - 21 Acres
- Parcels can be sold separately.

Zoning: IP

Land condition: Partially cleared and flat.

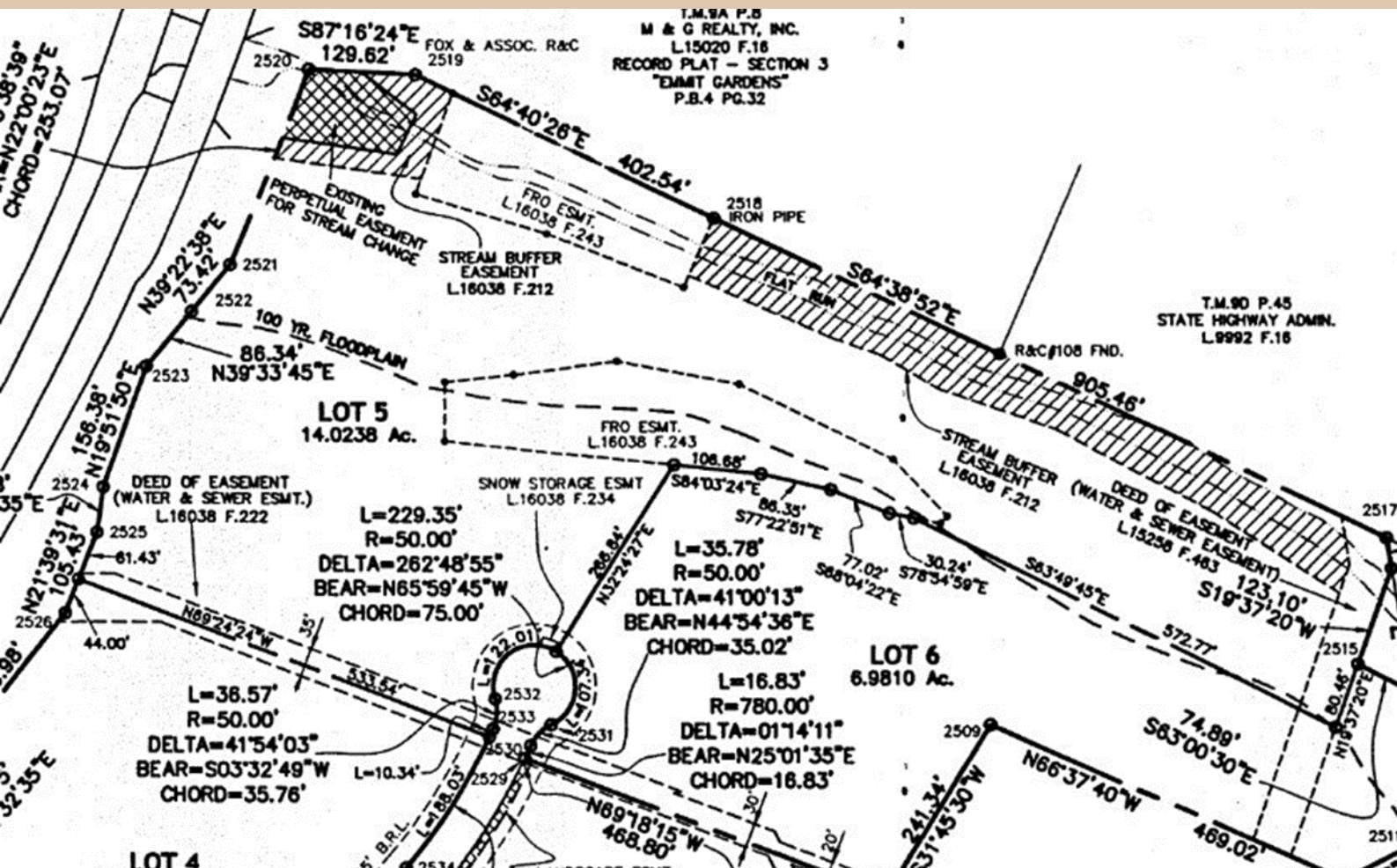
Utilities: Public utilities available to site.





# Site Map

Lots 5 & 6 – Creamery Court  
Emmitsburg, MD





# Lot 5- 14.02 Acres





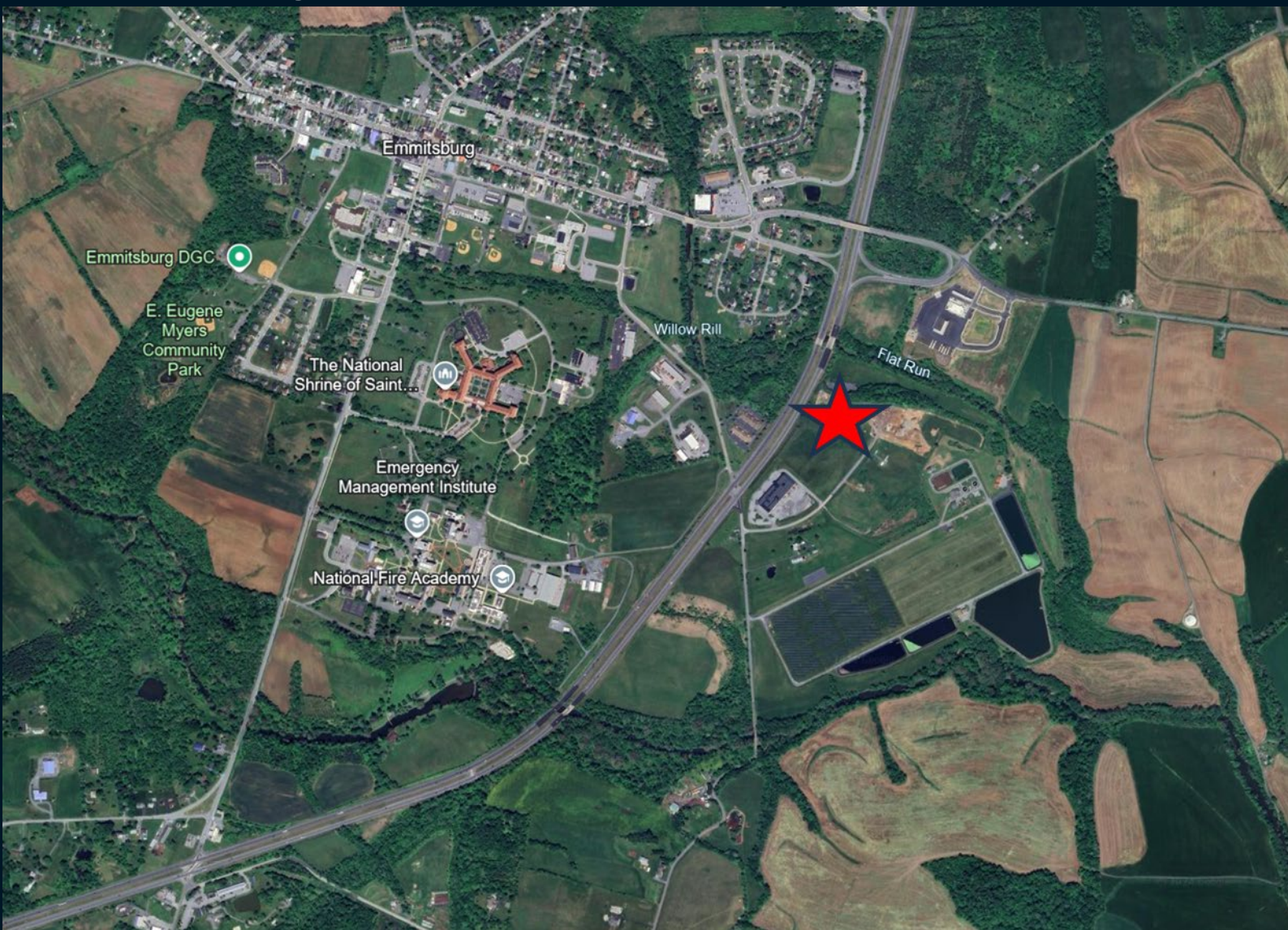
# Lot 6- 6.98 Acres





# Location Map

Lots 5 & 6 – Creamery Court  
Emmitsburg, MD



**Rick Williamson**

Managing Director

[rick.williamson@jll.com](mailto:rick.williamson@jll.com)

+1 410 404 5522

**Dominic Digiovannantonio**

Vice President

[dom.digi@jll.com](mailto:dom.digi@jll.com)

+1 443 452 1505

**Rob Freedman**

Managing Director

[rob.freedman@jll.com](mailto:rob.freedman@jll.com)

+1 410 952 9444

Although information has been obtained from sources deemed reliable, JLL does not make any guarantees, warranties or representations, express or implied, as to the completeness or accuracy as to the information contained herein. Any projections, opinions, assumptions or estimates used are for example only. There may be differences between projected and actual results, and those differences may be material. JLL does not accept any liability for any loss or damage suffered by any party resulting from reliance on this information. If the recipient of this information has signed a confidentiality agreement with JLL regarding this matter, this information is subject to the terms of that agreement. ©2024 Jones Lang LaSalle Brokerage, Inc. All rights reserved.