

FOR LEASE

NORTHWEST AIRPARK

*±15,649 SF Industrial Property with
Hangar Available Now in Deer Valley*

1628 W WILLIAMS DR, PHOENIX, AZ 85027

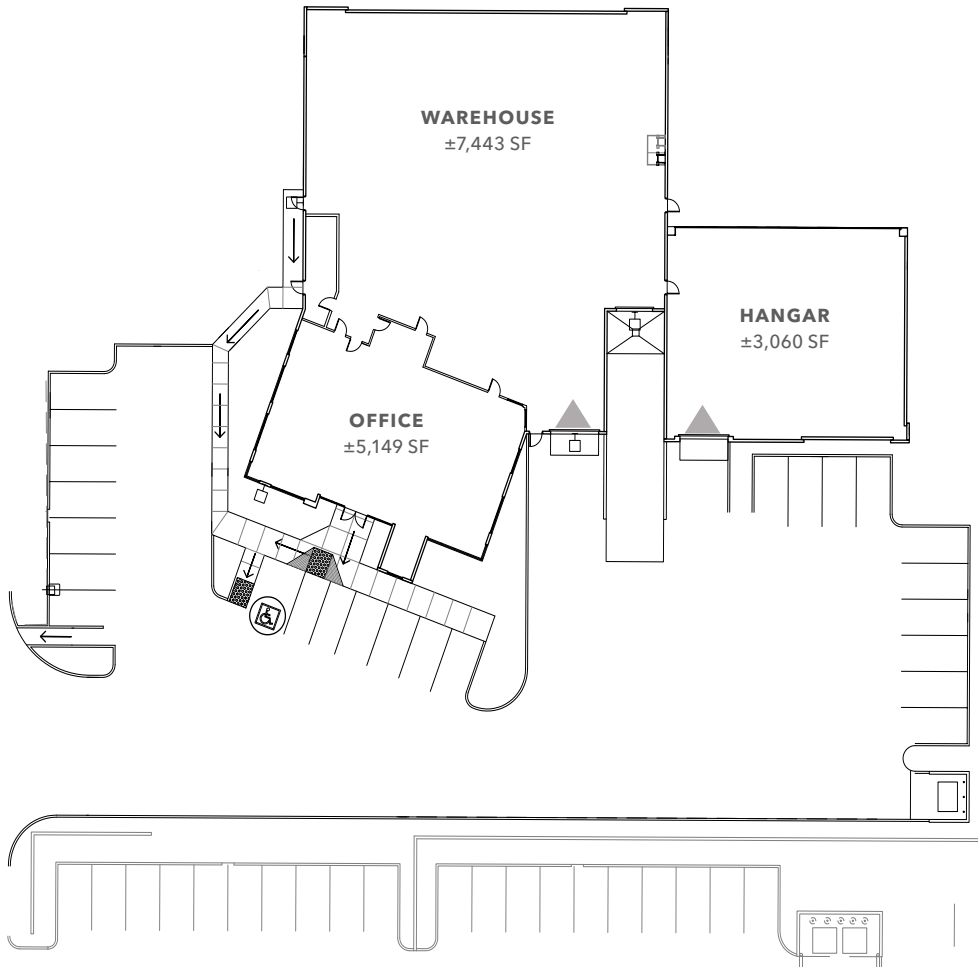


PROPERTY OVERVIEW

TOTAL SF	±15,649
OFFICE SF	±5,149 (Two Floors)
A/C	100%
WAREHOUSE SF	±7,500
HANGAR SF	±3,060
ZONING	CP/BP, City of Phoenix
CLEAR HEIGHT	17'
LOT SIZE	1.76 AC
PARKING	24 Total Parking Spaces 14 Covered
YEAR BUILT	2005 by Sun State Builders
POWER	800 Amps, 277/480V
LOADING	2 Grade Level Doors & Truckwell
SPRINKLERS	Yes
SECURITY	Alarm System
SOLAR POWER	Premises Has Solar On-Site to Reduce Monthly Power Bills
ADDITIONAL FEATURES	Includes ±18,000 SF Lot for Expansion



SITE PLAN



▲ Grade level loading

±15,649 SF

AVAILABLE

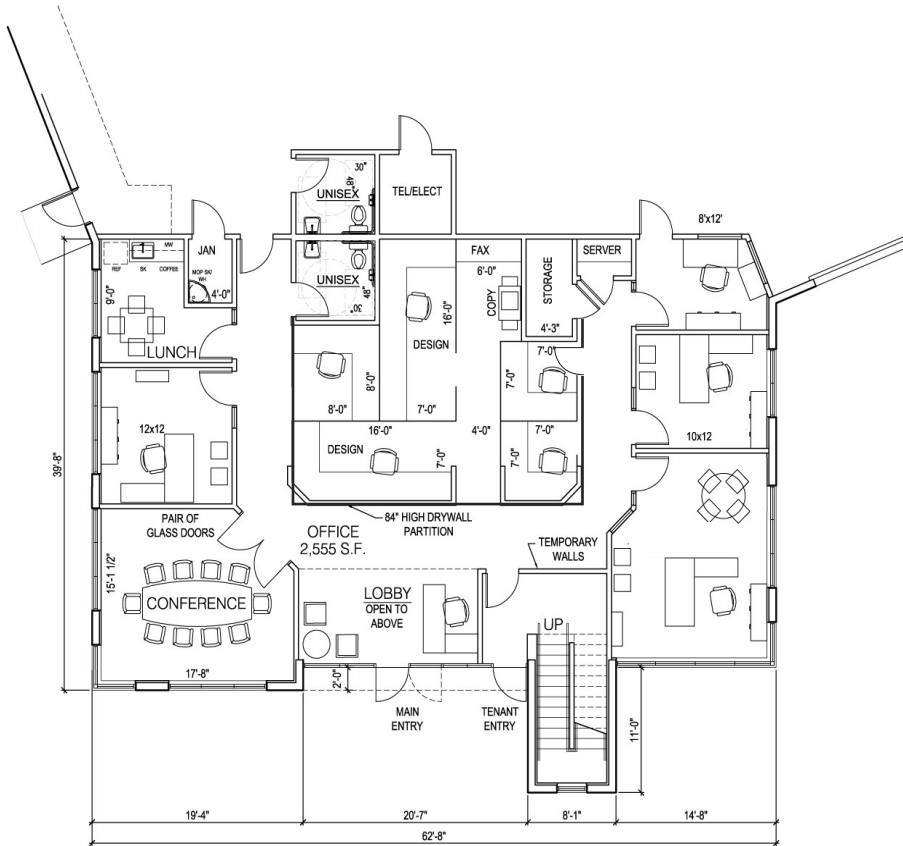
*CONTACT
BROKER*

LEASE RATE (SF/YR)

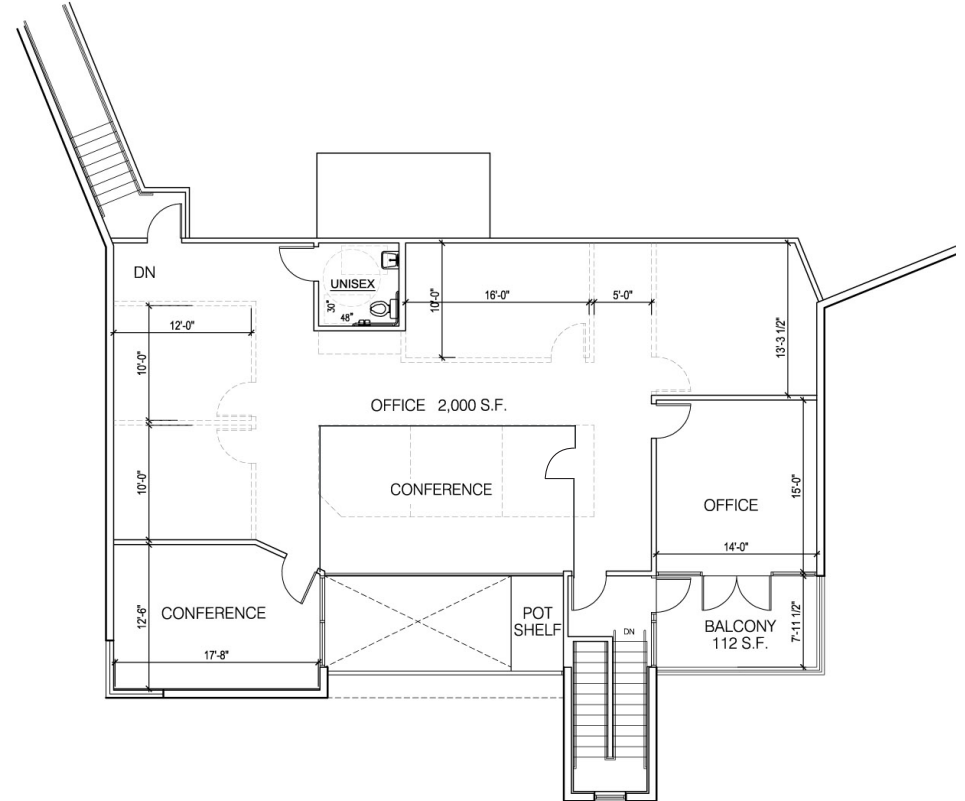


FLOOR PLAN

FIRST FLOOR OFFICE



SECOND FLOOR OFFICE



CORPORATE NEIGHBORS



For more information, contact

MIKE CIOSEK, SIOR
Executive Vice President
602.513.5135
mike.ciosek@kidder.com

ERIC BELL, SIOR
Executive Vice President
602.513.5151
eric.bell@kidder.com

CHASE GIANNI
Associate
602.513.5138
chase.gianni@kidder.com

KIDDER.COM

This information supplied herein is from sources we deem reliable. It is provided without any representation, warranty, or guarantee, expressed or implied as to its accuracy. Prospective Buyer or Tenant should conduct an independent investigation and verification of all matters deemed to be material, including, but not limited to, statements of income and expenses. Consult your attorney, accountant, or other professional advisor. All Kidder Mathews designs are the sole property of Kidder Mathews. Branded materials and layouts are not authorized for use by any other firm or person.

