

MEDICAL OFFICE BUILDING FOR SALE OR LEASE

3001 Twin Rivers Dr, Arkadelphia, AR

PRICE REDUCTION | MOTIVATED OWNERSHIP



CONTACT US TODAY
501.376.6555 | mosestucker.com



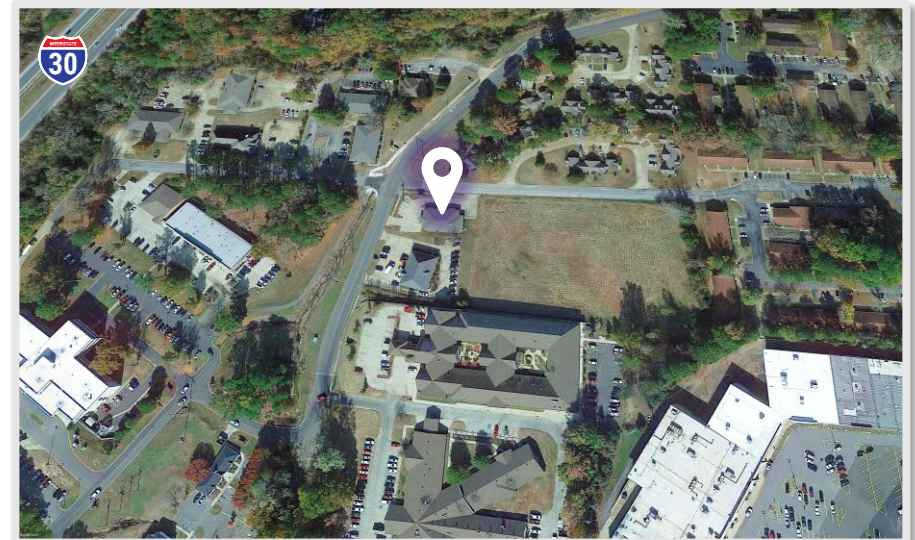
Property Understanding

OVERVIEW

Offering	For Sale or Lease
Address	3001 Twin Rivers Dr
City/State	Arkadelphia, AR 71923
Lease Rate	\$17.00/SF
Price	\$599,000 \$675,000
Property Type	Medical Office Building
Building Size	±3,188 SF
Lot Size	0.36 Acres
Stories	1
Year Built	2006
Zoning	C-4

PROPERTY HIGHLIGHTS

- Turnkey Dental Office: Recently renovated and move-in ready, located just 0.2 miles from Baptist Health Medical Center
- Professional Curb Appeal: Brick veneer construction with a durable hip roof and newer composition shingles
- Established Medical Corridor: Situated among a cluster of medical, dental, and vision clinics, including Professional Park Addition and Woodland Medical Park
- Utilities & Accessibility: Fully serviced by municipal utilities with no known flood risk
- Strategic Location: Just 2 miles from Henderson State University and 3 miles from Ouachita Baptist University, enhancing visibility and access to a broad patient base



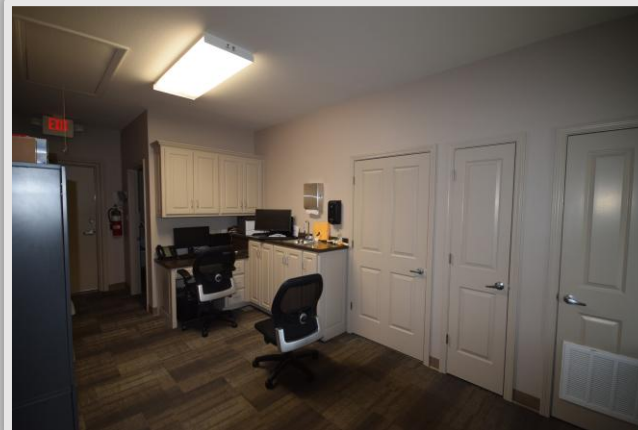
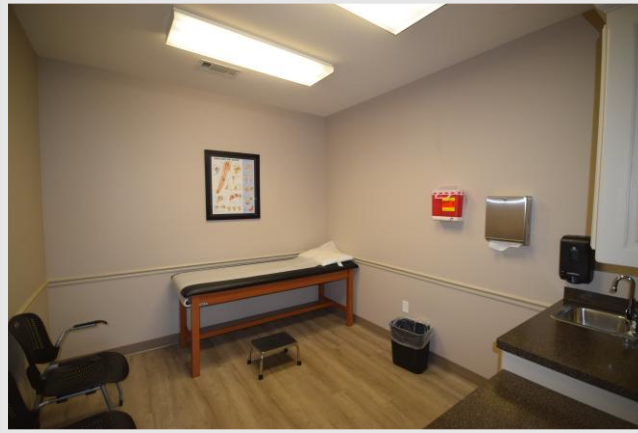






Moses Tucker
PARTNERS

INTERIOR PHOTOS



Arkadelphia, AR



Located in the foothills of the Ouachita Mountains in Clark County, Arkadelphia is a fantastic place to live, work and play. In addition to its scenic views and outdoor recreation opportunities, Arkadelphia is home to 10,380 residents and two 4-year universities: Ouachita Baptist University and Henderson State University.

Conveniently situated along Interstate 30, Arkadelphia is within a day's drive of 52% of the nation's population. It is one hour north of Texarkana, one hour south of Little Rock, 3.5 hours from Dallas, Texas, and 3 hours from Memphis, Tennessee.

In 2022, [Hostess Brands](#) announced Clark County as the new home for its state-of-the-art sustainability-first bakery, which will add 150 jobs over the next three years. [Veolia](#), a global leader in optimized resource management, announced in 2022 the addition of 100 jobs as part of a \$600M expansion that, when complete, will be the most modern, environmentally efficient treatment plant in the world.

DEMOGRAPHICS*

	3 MILES	5 MILES	10 MILES
Population	11,256	12,553	16,279
Households	3,985	4,470	6,022
Average Age	39.1	38.2	40.5
Average Household Income	\$58,344	\$60,870	\$66,391
Businesses	11,256	12,553	16,279

**Demographic details based on property location*

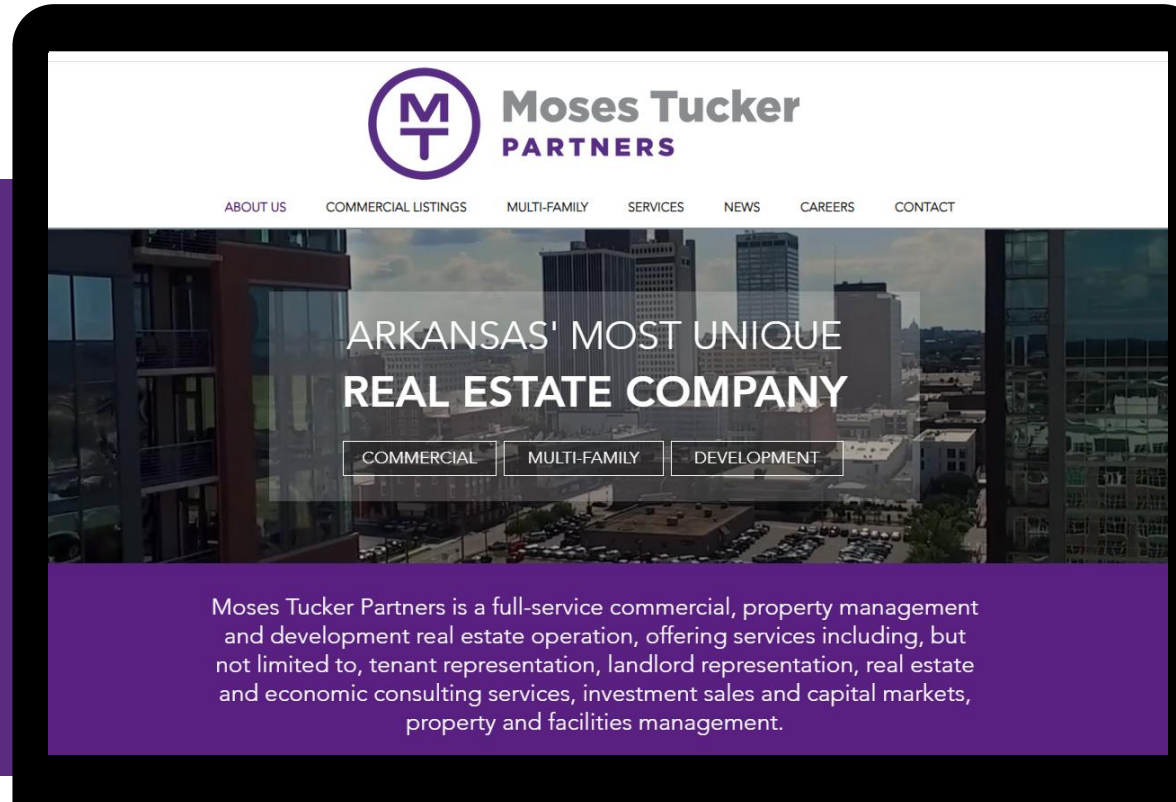
CONNECT

 (501) 376-6555

 www.mosestucker.com

 info@mosestucker.com

 **200 River Market Ave, Suite 300,
Little Rock, AR 72201**



Chris Moses

Principal, President & CEO
cmoses@mosestucker.com

Chris Monroe

Principal & Vice President, Corporate Services
cmonroe@mosestucker.com

Greyson Skokos

Principal & Vice President of Brokerage
gskokos@mosestucker.com

George Friedmann

Principal & Vice President of Development
gfriedmann@mosestucker.com

Cam Deacon

Capital Markets Director
cdeacon@mosestucker.com

Ridge Fletcher

Brokerage Analyst
rfletcher@mosestucker.com

DISCLAIMER

Moses Tucker Partners represents the owner of the property represented herein. Although all information furnished regarding property for sale, rental, or financing is from sources deemed reliable, such information has not been verified and no express representation is made nor is any to be implied as to the accuracy thereof and it is submitted subject to errors, omissions, change of price, rental or other conditions, prior sale, lease or financing, or withdrawal without notice and to any special conditions imposed by our principal.