

FOR SALE OR LEASE  
**45,840 SF**

# 900 MCKINLEY ST ANOKA, MN



# PROPERTY INFORMATION

## PROPERTY HIGHLIGHTS

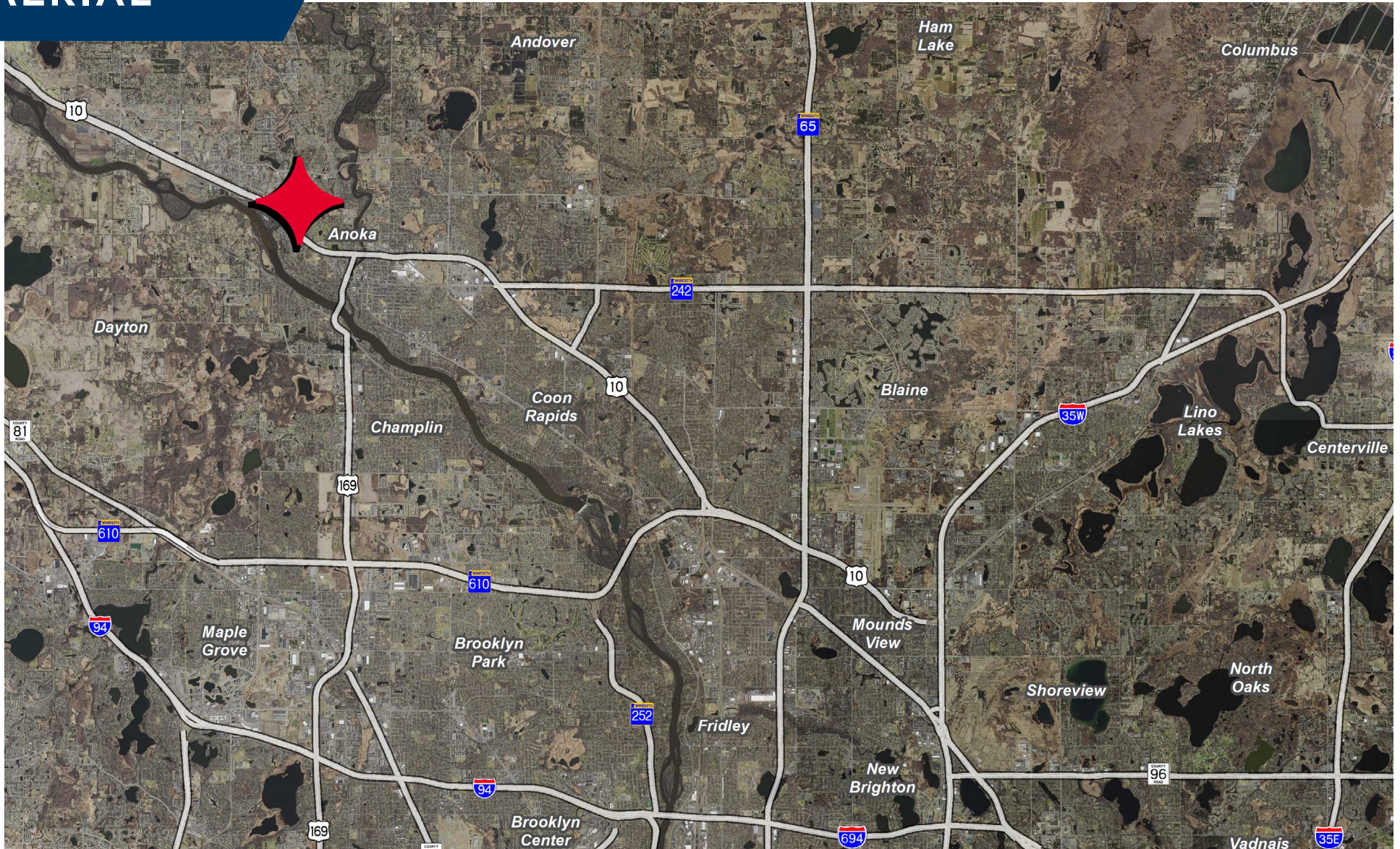
- Dock and drive-in loading
- Excess land for addition or exterior storage
- Heavy power
- Direct access to Hwy 10

<b>Address</b>	900 McKinley St Anoka, MN
<b>Building Size</b>	4,176 SF Office 41,664 SF Whse 45,840 SF Total
<b>Parcel ID</b>	35-32-25-41-0018
<b>Total Land</b>	4.36 acres (189,921 SF)
<b>Year Built</b>	1998
<b>Clear Height</b>	20'
<b>Loading</b>	4 docks 1 drive-in
<b>Parking</b>	+/- 60 stalls
<b>Power</b>	3,000 amps
<b>Sale Price</b>	\$5,100,000
<b>Lease Rate</b>	Negotiable
<b>2025 Taxes</b>	\$113,870



# PROPERTY PHOTOS





**DANNY MCNAMARA**  
Managing Director  
+1 952 893 8895  
danny.mcnamara@cushwake.com

**BRENT MASICA**  
Executive Managing Director  
+1 952 893 8231  
brent.masica@cushwake.com

3500 American Blvd W, Suite 200  
Minneapolis, MN 55431  
952 831 1000  
industrialmn.com

©2025 Cushman & Wakefield. All rights reserved. The information contained in this communication is strictly confidential. This information has been obtained from sources believed to be reliable but has not been verified. NO WARRANTY OR REPRESENTATION, EXPRESS OR IMPLIED, IS MADE AS TO THE CONDITION OF THE PROPERTY (OR PROPERTIES) REFERENCED HEREIN OR AS TO THE ACCURACY OR COMPLETENESS OF THE INFORMATION CONTAINED HEREIN, AND SAME IS SUBMITTED SUBJECT TO ERRORS, OMISSIONS, CHANGE OF PRICE, RENTAL OR OTHER CONDITIONS, WITHDRAWAL WITHOUT NOTICE, AND TO ANY SPECIAL LISTING CONDITIONS IMPOSED BY THE PROPERTY OWNER(S). ANY PROJECTIONS, OPINIONS OR ESTIMATES ARE SUBJECT TO UNCERTAINTY AND DO NOT SIGNIFY CURRENT OR FUTURE PROPERTY PERFORMANCE.