



±792 - ±1,733 SF Medical Spaces at Foothill Medical-Dental Center

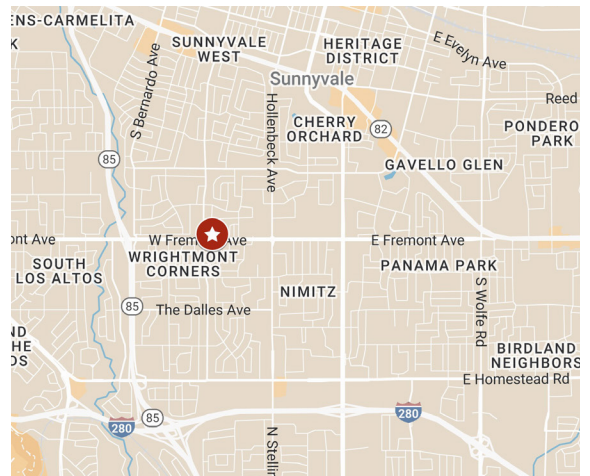
**877 W FREMONT AVENUE
SUNNYVALE, CA**

Available Spaces

- D2- ±792 SF
- A1- ±880 SF
- H2- ±1,055 SF
- C2 - ±1,185 SF
- M2- ±1,263 SF
- G2 - ±1,412 SF
- D1- ±1,602 SF
- C3- ±1,733 SF

Property Highlights

- Located on Approx. Six (6) Acres in Sunnyvale, CA
- Corner of Mary Avenue & Fremont Avenue, with Easy Access to HWY 85
- Beautifully Landscaped / Garden Setting
- Monument & Directory Signage Throughout
- Medical Laboratory Located on Site
- Ample Convenient Parking: 6 / 1,000 Ratio
- Professional Management
- Serene Environment for Patients
- Numerous Amenities Nearby



For information, please contact:

Skylar Smith

Associate

t 949-637-2857

skylar.smith@nmrk.com

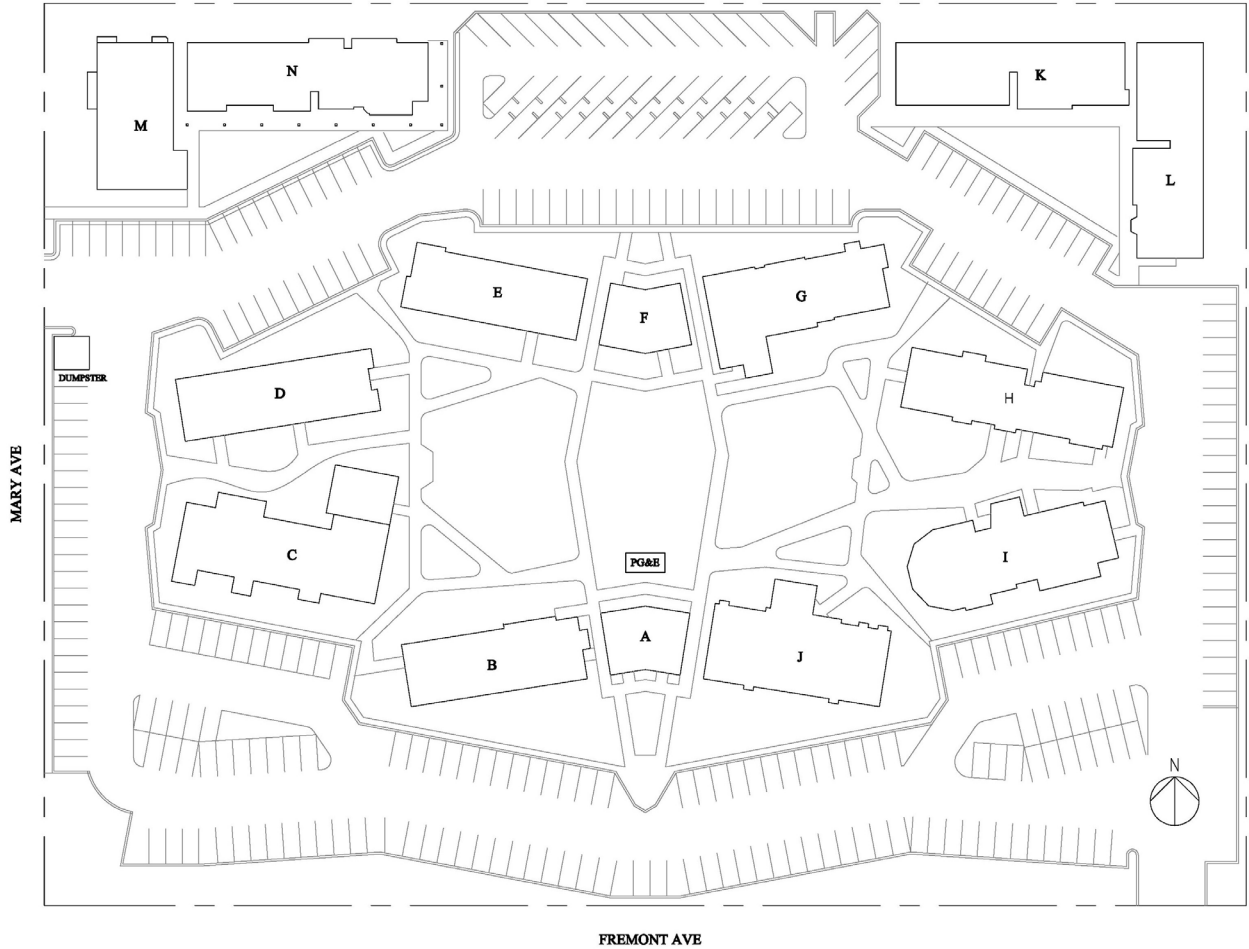
CA RE License #02196285

nmrk.com

NEWMARK

The distributor of this communication is performing acts for which a real estate license is required. The information contained herein has been obtained from sources deemed reliable but has not been verified and no guarantee, warranty or representation, either express or implied, is made with respect to such information. Terms of sale or lease and availability are subject to change or withdrawal without notice. 18005597639 • 09/25

Site Plan



*This site plan is not drawn to scale.

For information, please contact:

Skylar Smith

Associate

t 949-637-2857

skylar.smith@nmrk.com

CA RE License #02196285

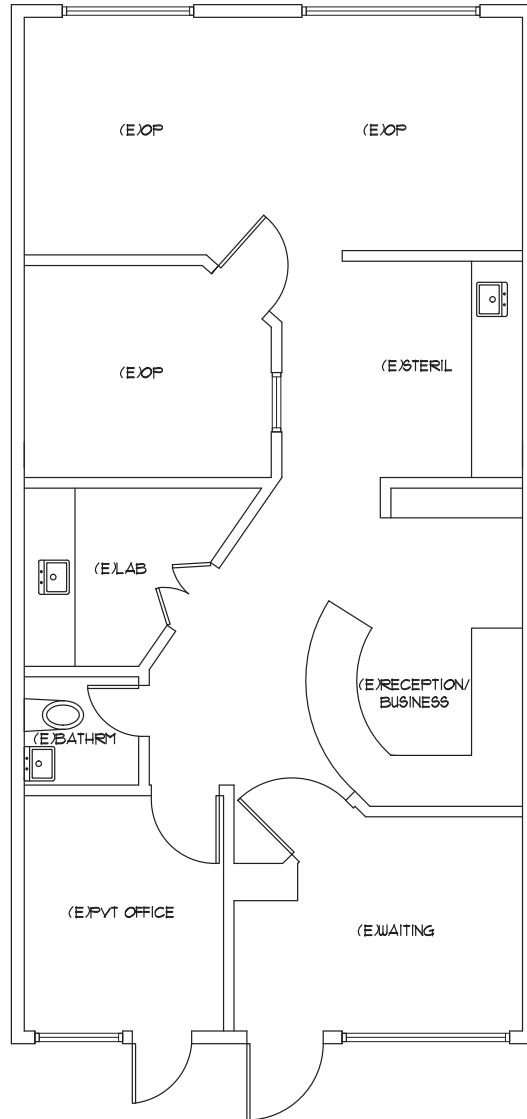
nmrk.com

NEWMARK

The distributor of this communication is performing acts for which a real estate license is required. The information contained herein has been obtained from sources deemed reliable but has not been verified and no guarantee, warranty or representation, either express or implied, is made with respect to such information. Terms of sale or lease and availability are subject to change or withdrawal without notice. 18005597639 • 09/25

Floor Plan

Suite D2 - ±792 SF



*This floor plan is not drawn to scale.

For information, please contact:

Skylar Smith

Associate

t 949-637-2857

skylar.smith@nmrk.com

CA RE License #02196285

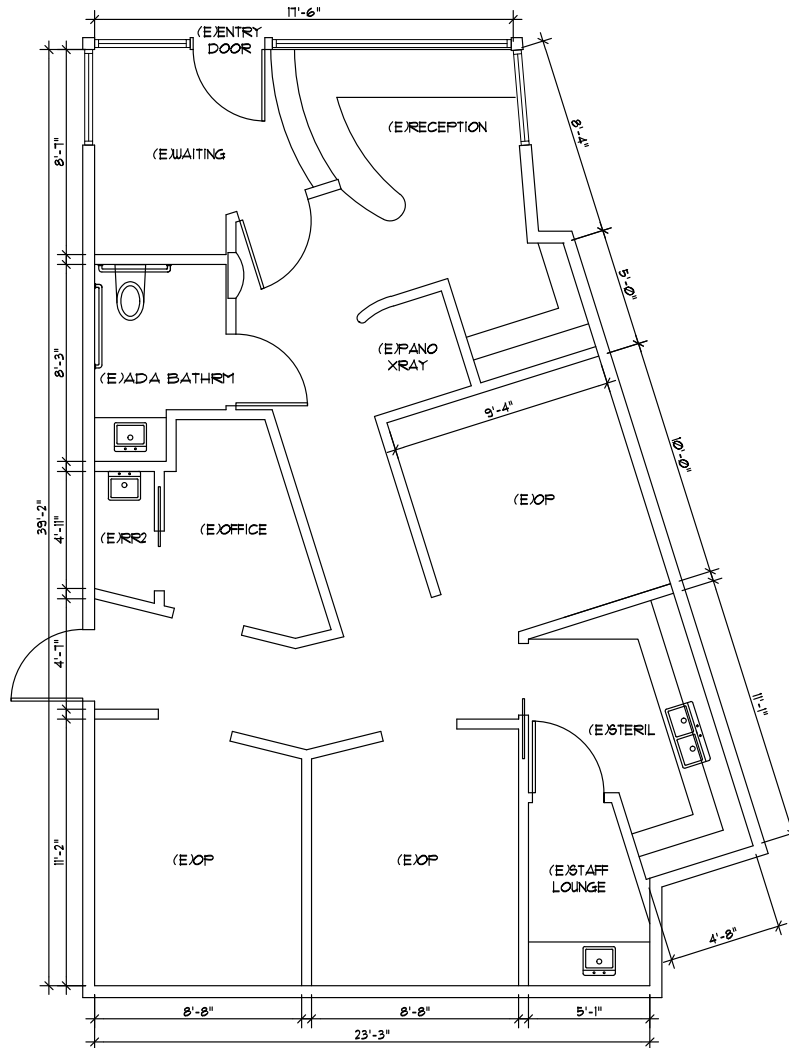
nmrk.com

NEWMARK

The distributor of this communication is performing acts for which a real estate license is required. The information contained herein has been obtained from sources deemed reliable but has not been verified and no guarantee, warranty or representation, either express or implied, is made with respect to such information. Terms of sale or lease and availability are subject to change or withdrawal without notice. 18005597639 • 09/25

Floor Plan

Suite A1 - ±880 SF



*This floor plan is not drawn to scale.

For information, please contact:

Skylar Smith

Associate

t 949-637-2857

skylar.smith@nrmk.com

CA RE License #02196285

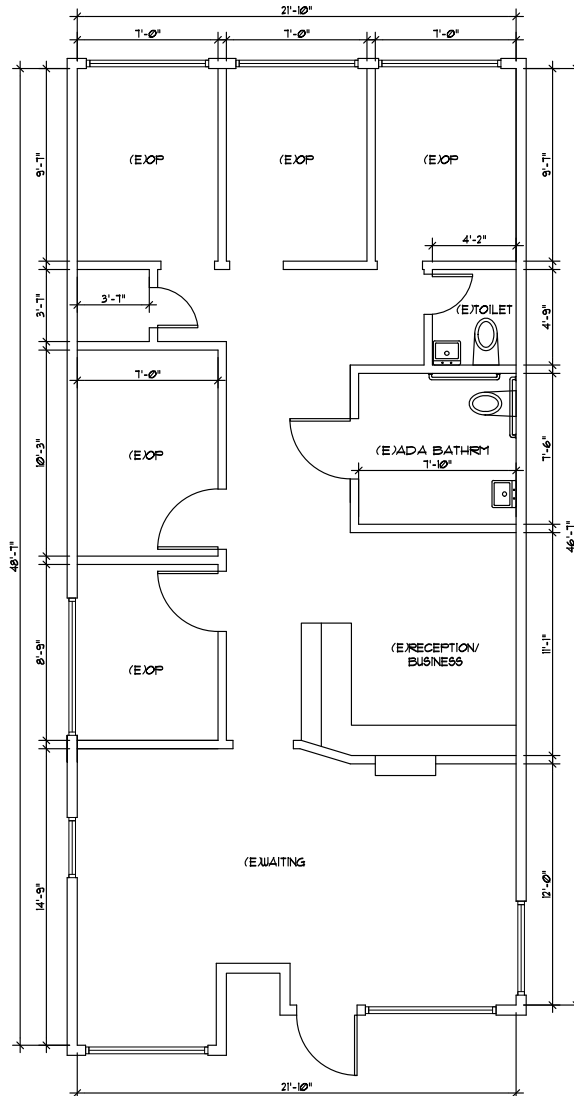
nrmk.com

NEWMARK

The distributor of this communication is performing acts for which a real estate license is required. The information contained herein has been obtained from sources deemed reliable but has not been verified and no guarantee, warranty or representation, either express or implied, is made with respect to such information. Terms of sale or lease and availability are subject to change or withdrawal without notice. 18005597639 • 09/25

Floor Plan

Suite H2 - ±1,055 SF



*This floor plan is not drawn to scale.

For information, please contact:

Skylar Smith

Associate

t 949-637-2857

skylar.smith@nmrk.com

CA RE License #02196285

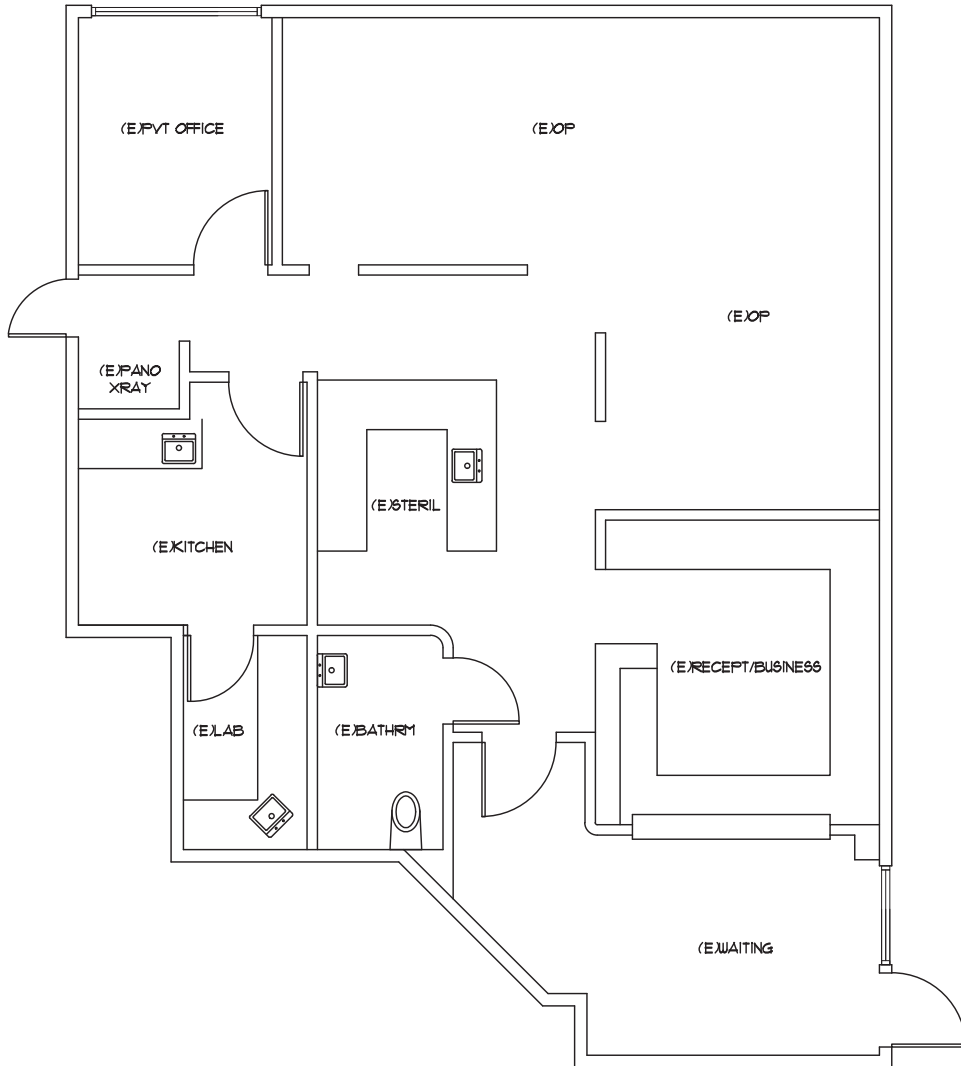
nmrk.com

NEWMARK

The distributor of this communication is performing acts for which a real estate license is required. The information contained herein has been obtained from sources deemed reliable but has not been verified and no guarantee, warranty or representation, either express or implied, is made with respect to such information. Terms of sale or lease and availability are subject to change or withdrawal without notice. 18005597639 • 09/25

Floor Plan

Suite C2 - ±1,185 SF



*This floor plan is not drawn to scale.

For information, please contact:

Skylar Smith

Associate

t 949-637-2857

skylar.smith@nmrk.com

CA RE License #02196285

nmrk.com

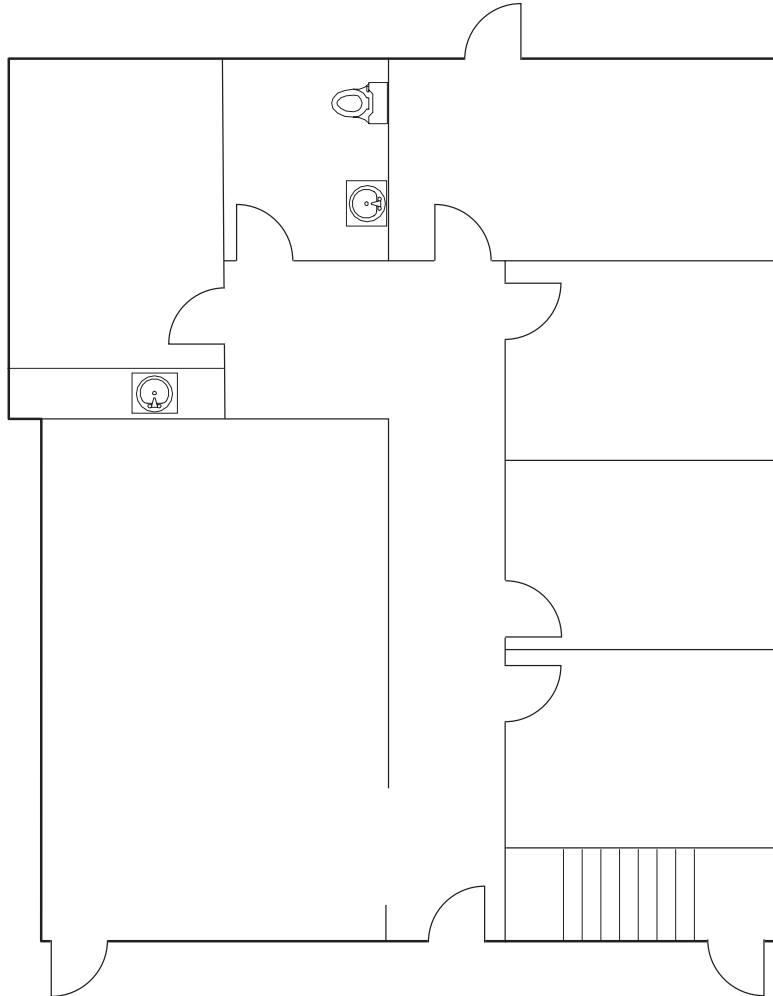
NEWMARK

The distributor of this communication is performing acts for which a real estate license is required. The information contained herein has been obtained from sources deemed reliable but has not been verified and no guarantee, warranty or representation, either express or implied, is made with respect to such information. Terms of sale or lease and availability are subject to change or withdrawal without notice. 18005597639 • 09/25

Floor Plan

Suite M2 - ±1,263 SF

Available 12/31/2025



*This floor plan is not drawn to scale.

For information, please contact:

Skylar Smith

Associate

t 949-637-2857

skylar.smith@nmrk.com

CA RE License #02196285

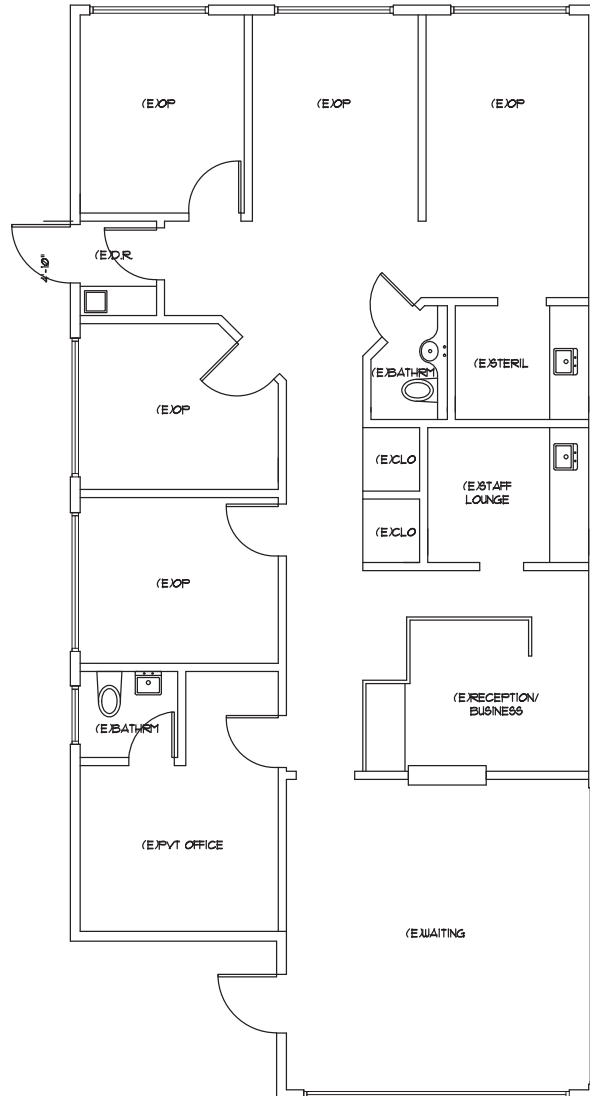
nmrk.com

NEWMARK

The distributor of this communication is performing acts for which a real estate license is required. The information contained herein has been obtained from sources deemed reliable but has not been verified and no guarantee, warranty or representation, either express or implied, is made with respect to such information. Terms of sale or lease and availability are subject to change or withdrawal without notice. 18005597639 • 09/25

Floor Plan

Suite G2 - ±1,412 SF



*This floor plan is not drawn to scale.

For information, please contact:

Skylar Smith

Associate

t 949-637-2857

skylar.smith@nmrk.com

CA RE License #02196285

nmrk.com

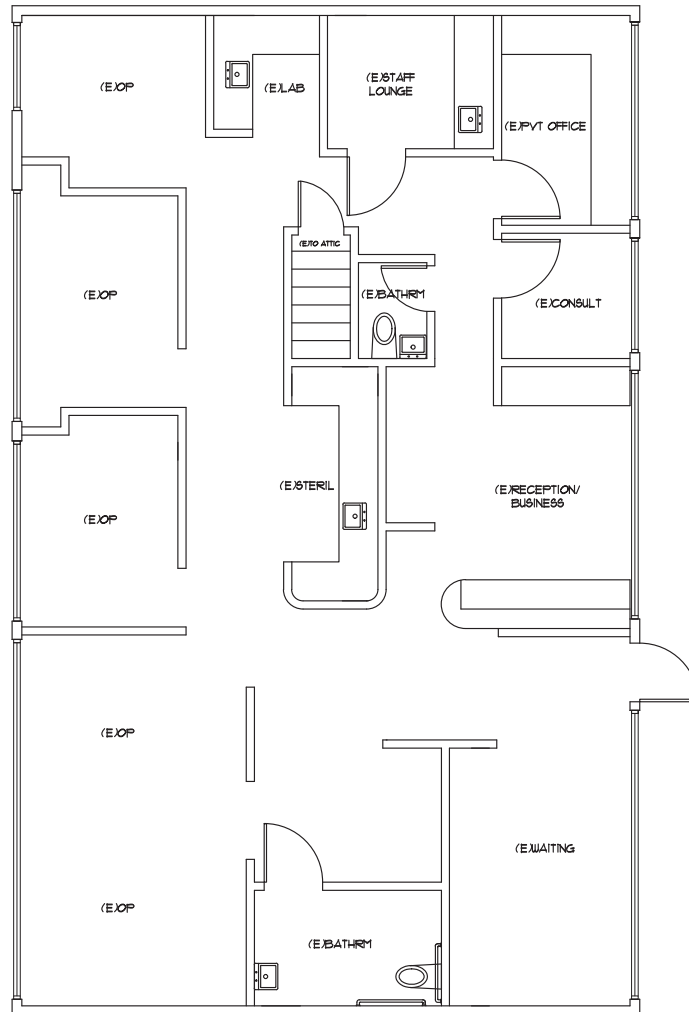
NEWMARK

The distributor of this communication is performing acts for which a real estate license is required. The information contained herein has been obtained from sources deemed reliable but has not been verified and no guarantee, warranty or representation, either express or implied, is made with respect to such information. Terms of sale or lease and availability are subject to change or withdrawal without notice. 18005597639 • 09/25

Floor Plan

Suite D1 - ±1,602 SF

Available 1/31/2026



*This floor plan is not drawn to scale.

For information, please contact:

Skylar Smith

Associate

t 949-637-2857

skylar.smith@nmrk.com

CA RE License #02196285

nmrk.com

NEWMARK

The distributor of this communication is performing acts for which a real estate license is required. The information contained herein has been obtained from sources deemed reliable but has not been verified and no guarantee, warranty or representation, either express or implied, is made with respect to such information. Terms of sale or lease and availability are subject to change or withdrawal without notice. 18005597639 • 09/25

Floor Plan

Suite C3 - ±1,733 SF



*This floor plan is not drawn to scale.

For information, please contact:

Skylar Smith

Associate

t 949-637-2857

skylar.smith@nmrk.com

CA RE License #02196285

nmrk.com

NEWMARK

The distributor of this communication is performing acts for which a real estate license is required. The information contained herein has been obtained from sources deemed reliable but has not been verified and no guarantee, warranty or representation, either express or implied, is made with respect to such information. Terms of sale or lease and availability are subject to change or withdrawal without notice. 18005597639 • 09/25

Gallery



For information, please contact:

Skylar Smith

Associate

t 949-637-2857

skylar.smith@nmrk.com

CA RE License #02196285

nmrk.com

NEWMARK

The distributor of this communication is performing acts for which a real estate license is required. The information contained herein has been obtained from sources deemed reliable but has not been verified and no guarantee, warranty or representation, either express or implied, is made with respect to such information. Terms of sale or lease and availability are subject to change or withdrawal without notice. 18005597639 • 09/25

Amenities Map



For information, please contact:

Skylar Smith

Associate

t 949-637-2857

skylar.smith@nrmk.com

CA RE License #02196285

nrmk.com

NEWMARK

The distributor of this communication is performing acts for which a real estate license is required. The information contained herein has been obtained from sources deemed reliable but has not been verified and no guarantee, warranty or representation, either express or implied, is made with respect to such information. Terms of sale or lease and availability are subject to change or withdrawal without notice. 18005597639 • 09/25