

# 4250 Coral Ridge Drive

Coral Springs, FL

## Key Facts

Property type	Industrial space
---------------	------------------

Building size	193,211 SF
---------------	------------

Space available	87,885 SF
-----------------	-----------



## Contact Us

Learn more about this property or schedule a tour by reaching out to our local investment and leasing officer.

**Sander Smith**

+1 (215) 870-2032

[sander.smith@eqtpartners.com](mailto:sander.smith@eqtpartners.com)

# 4250 Coral Ridge Drive

Coral Springs, FL

## BUILDING SPECIFICATIONS

---

Building Size: 193,211 SF

---

Building Space Available: 87,885 SF

---

Warehouse Space Available: 78,285 SF

---

Office Space Available: 9,600 SF

---

Dock-High Loading Doors: 9 with 8 hydraulic pit levelers

---

Drive-In Doors: 1

---

---

Abundant Surface Parking - 141 spaces

---

Nine (9) Big Ass Fans

---

Power: 4,000 amps

---

Fire Protection: ESFR Sprinkler System

---

Class A industrial Park

---

March 1st, 2026 Occupancy

---



## Contact Us

Learn more about this property or schedule a tour by reaching out to our local investment and leasing officer.

**Sander Smith**

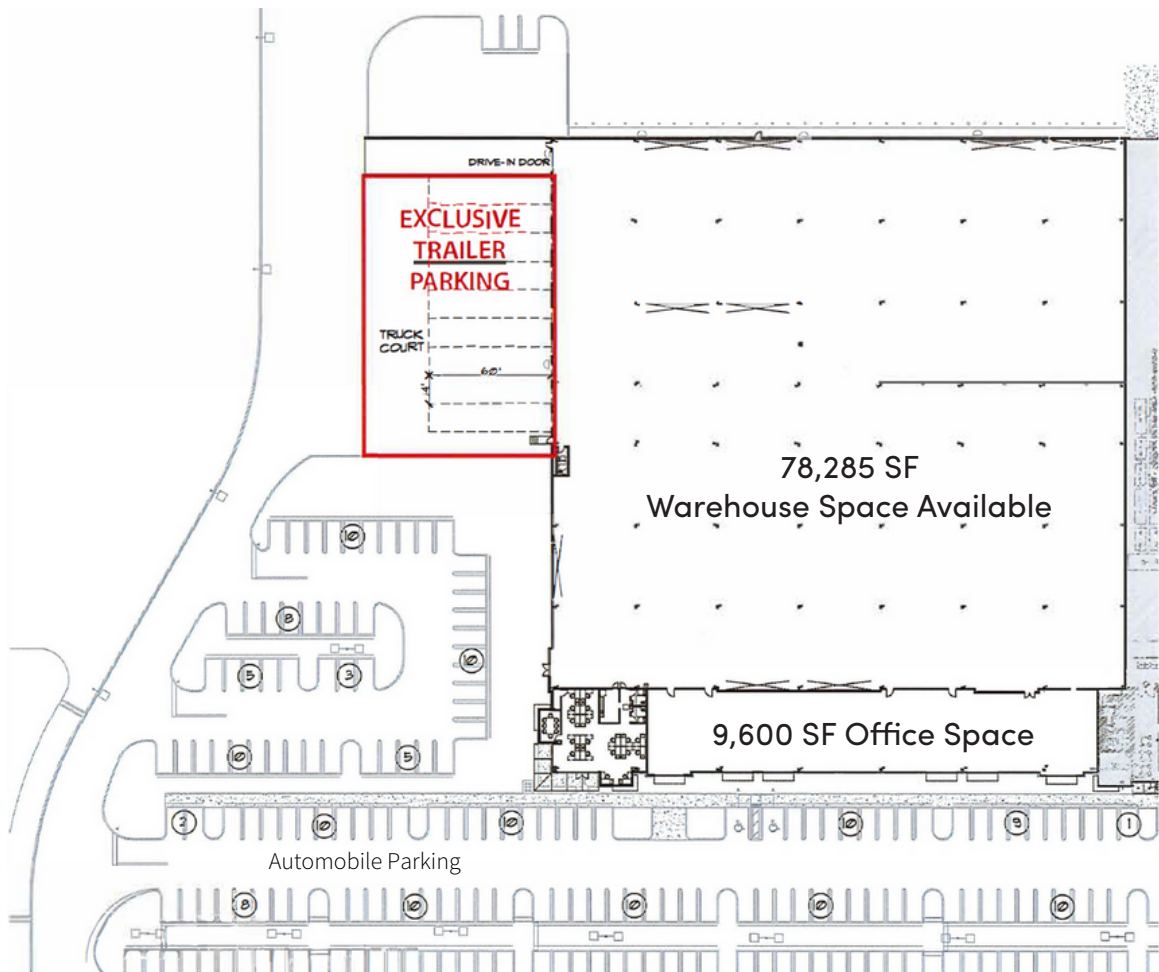
+1 (215) 870-2032

[sander.smith@eqtpartners.com](mailto:sander.smith@eqtpartners.com)

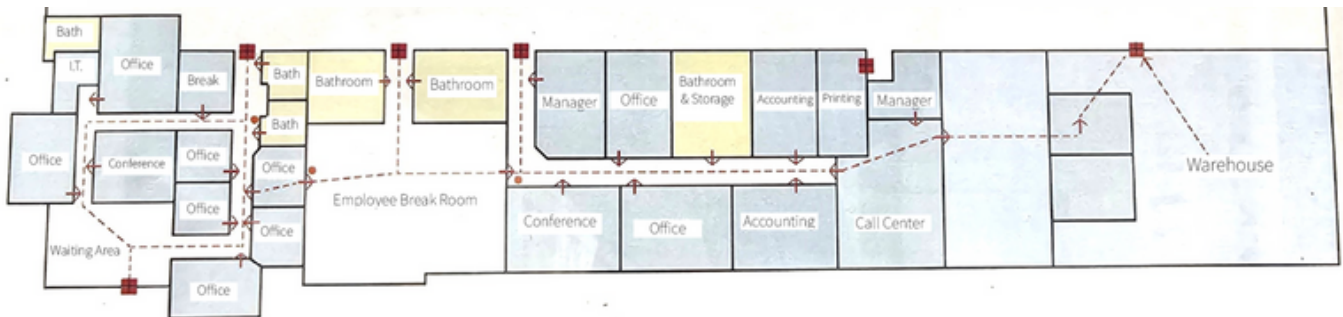
# 4250 Coral Ridge Drive

Coral Springs, FL

## SITE PLAN



## OFFICE PLAN



## Contact Us

Learn more about this property or schedule a tour by reaching out to our local investment and leasing officer.

**Sander Smith**

+1 (215) 870-2032

[sander.smith@eqtpartners.com](mailto:sander.smith@eqtpartners.com)