

20 DOCK DOORS IN HARRISBURG FOR LEASE

1115 Slate Hill Road, Camp Hill, PA 17011



CALL FOR PRICING DETAILS

PROPERTY DETAILS

12,000± SF TOTAL
AVAILABLE:

- 12,000± SF dock
- 20 loading positions
- Dock ramp

2± ACRES AVAILABLE:

- Asphalt paved, fenced & lit yard
- A-2 Industrial zoning



LOCATION DETAILS

Centrally located within a few miles of I-83, I-81, & I-76
The property is bordered by US 15 with immediate access via
Slate Hill Road.



Burr & Temkin
TRANSPORTATION REAL ESTATE SPECIALISTS SINCE 1983



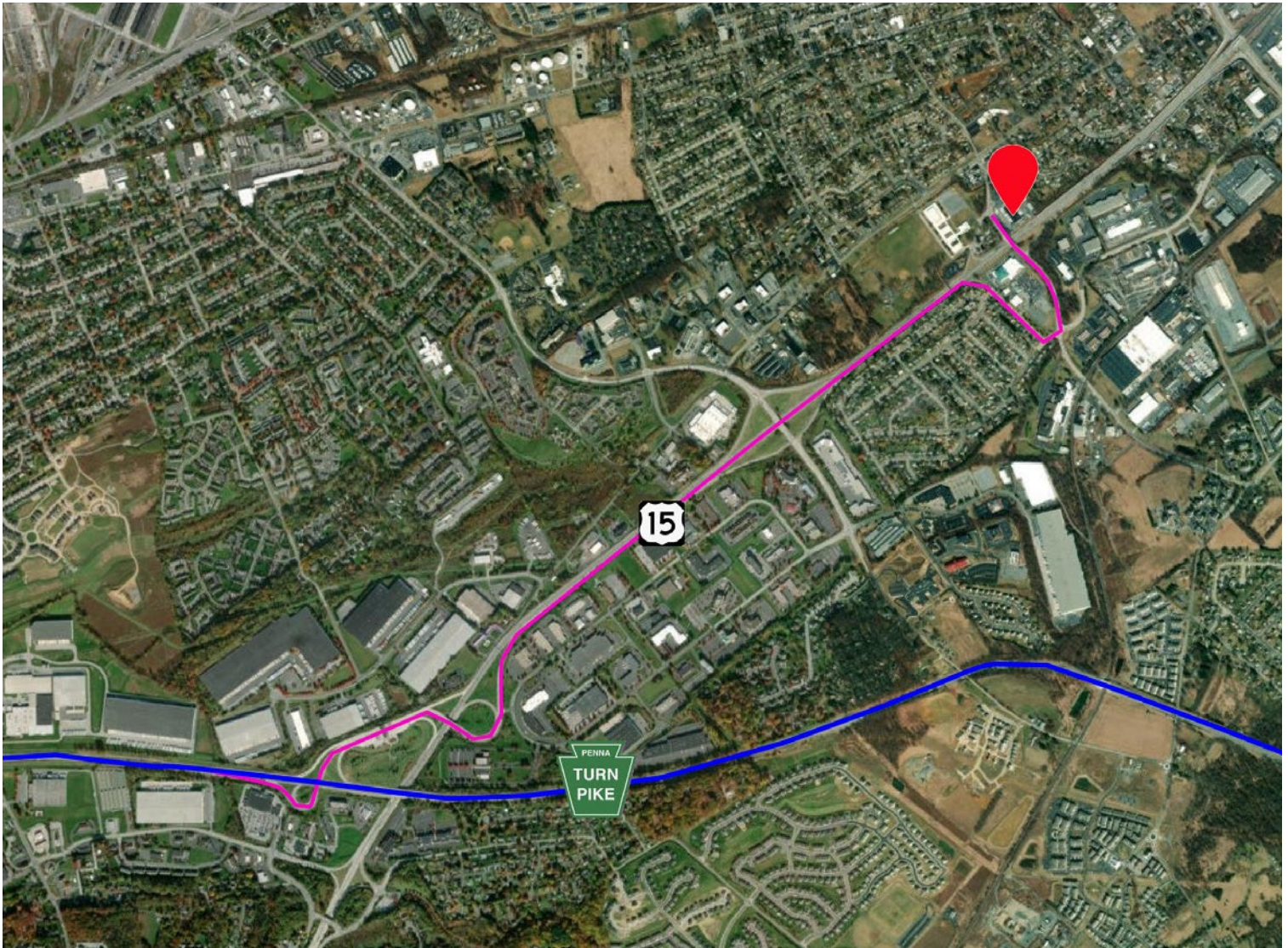
Chuck Dombrowski
Regional Vice President
724.554.6681
chuck@burrtemkin.com

Eric McFarlin
Principal
336.817.2969
ericm@burrtemkin.com

This statement is based upon information we believe to be correct and is obtained from sources we regard as reliable, but we assume no liability for errors or omissions therein.

20 DOCK DOORS IN HARRISBURG FOR LEASE

1115 Slate Hill Road, Camp Hill, PA 17011



Burr & Temkin
TRANSPORTATION REAL ESTATE SPECIALISTS SINCE 1983



Chuck Dombrowski
Regional Vice President
724.554.6681
chuck@burrtemkin.com

Eric McFarlin
Principal
336.817.2969
ericm@burrtemkin.com

This statement is based upon information we believe to be correct and is obtained from sources we regard as reliable, but we assume no liability for errors or omissions therein.

Burr & Temkin

TRANSPORTATION REAL ESTATE SPECIALISTS SINCE 1983

935 E. Mountain Street
Suite O
Kernersville, NC 27284



Chuck Dombrowski
Regional Vice President
724.554.6681
chuck@burrtemkin.com



Eric McFarlin
Principal
336.996.2550
ericm@burrtemkin.com