



# Port Barre Industrial Park - Central Site

2901 LA Highway 741  
Port Barre, LA 70577

## SITE INFORMATION

**ACRES AVAILABLE:**

36.9 Acres

**PROPERTY TYPE:**

Industrial with Rail Access

**TERRAIN:**

Flat

**SUB DIVIDABLE:**

Yes

**PRIOR/CURRENT USE:**

Agricultural

**OWNER:**

Jordan L. Doucet

**NEAREST MSA:**

Lafayette

Population: 491,558

Distance: 11.4 miles

Baton Rouge

Population: 834,159

Distance: 12.0 miles

**COORDINATES:**

30.544342, -91.951477

## UTILITIES

**ELECTRICITY:**

Entergy

**NATURAL GAS:**

Town of Arnaudville

**WATER:**

Town of Leonville

**SEWER:**

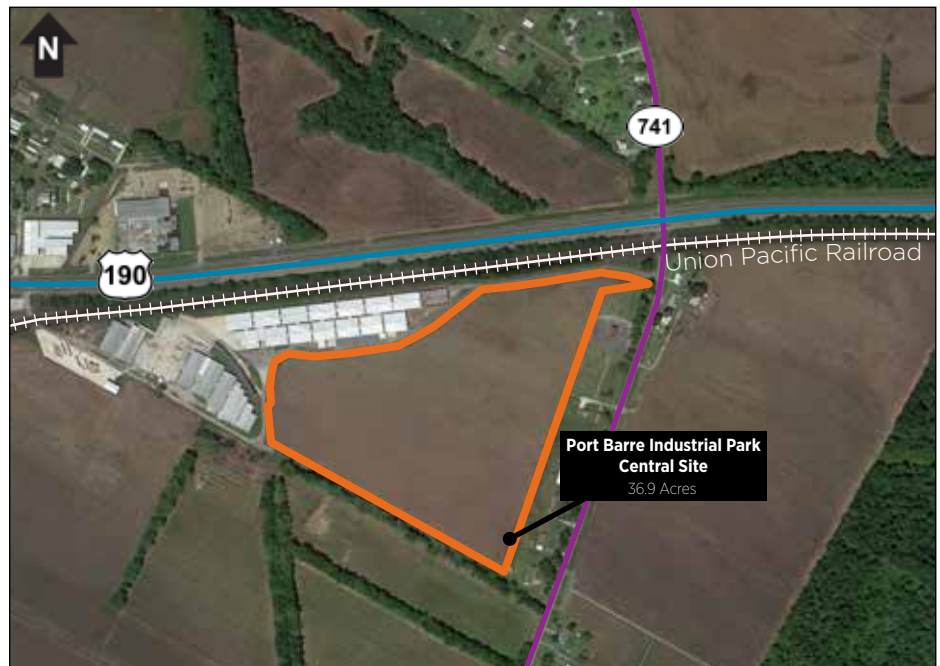
N/A; Proposed On-Site

**TELECOM:**

AT&T

**FIBER OPTIC:**

AT&T



## TRANSPORTATION LOGISTICS

**INTERSTATE:**

I-49

Distance: 7.3 miles

**HIGHWAY:**

US-190

Distance: 0.1 mile

**RAIL:**

Union Pacific Railroad

Distance: Adjacent to Site

**AIRPORT:**

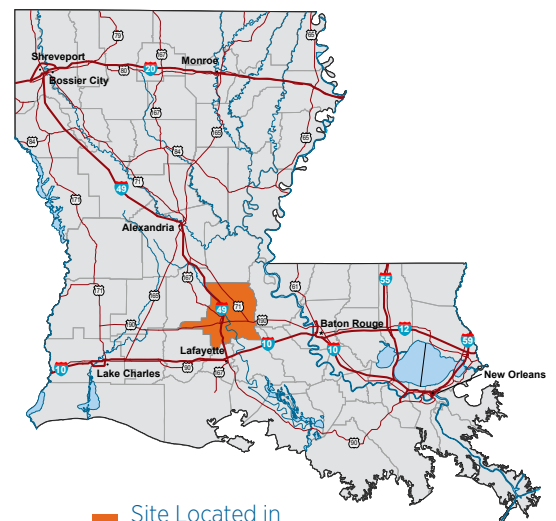
Lafayette Regional Airport (LFT)

Distance: 31.0 miles

**PORT:**

Port of Krotz Springs

Distance: 12.3 miles



Site Located in  
St. Landry Parish

**FIND OUT MORE:** [OpportunityLouisiana.com](http://OpportunityLouisiana.com)  
800.450.8115



# Port Barre Industrial Park - Central Site

2901 LA Highway 741  
Port Barre, LA 70577

