

For Sale

31,811 SF Freestanding Building

cresa



Purchase Opportunity

Office | Medical | Retail | Redevelopment

7102 Mineral Point Road
Madison, WI 53717

For Sale

7102 Mineral Point Road

cresa 



Office | Medical | Retail | Redevelopment

Situated on 2 acres along one of Madison's busiest commercial corridors, 7102 Mineral Point Road offers strong traffic exposure, accessibility, and significant anchor presence. Currently configured as a medical clinic, the property is well positioned to be occupied by another healthcare provider; however, it also provides an excellent opportunity for a new retail, office, or mixed-use building. With multiple access points from a public street, supportive soils, and nearly 250' of high visibility street frontage, 7102 Mineral Point Road provides flexibility and ease for adaptive reuse or redevelopment.

For Sale

7102 Mineral Point Road

cresa



Property Overview

Building Size	31,811 SF <ul style="list-style-type: none">• Basement: 5,829 SF• First Floor: 14,272 SF• Second Floor: 11,710 SF
Description	Medical office and clinic
Stories	2. With finished basement and elevator
Year Built	Constructed in 1979; addition in 1992
Power	1,000 amps. with numerous 200-800 amp. distribution panels
Security	Locked entries w/ monitored security system and proximity card readers for employees
Parking	112 spaces; 3.50/1,000 SF
Parcel Size	2.0 acres
Zoning	SE, Suburban Employment
Sale Price	\$4,500,000

For Sale

7102 Mineral Point Road

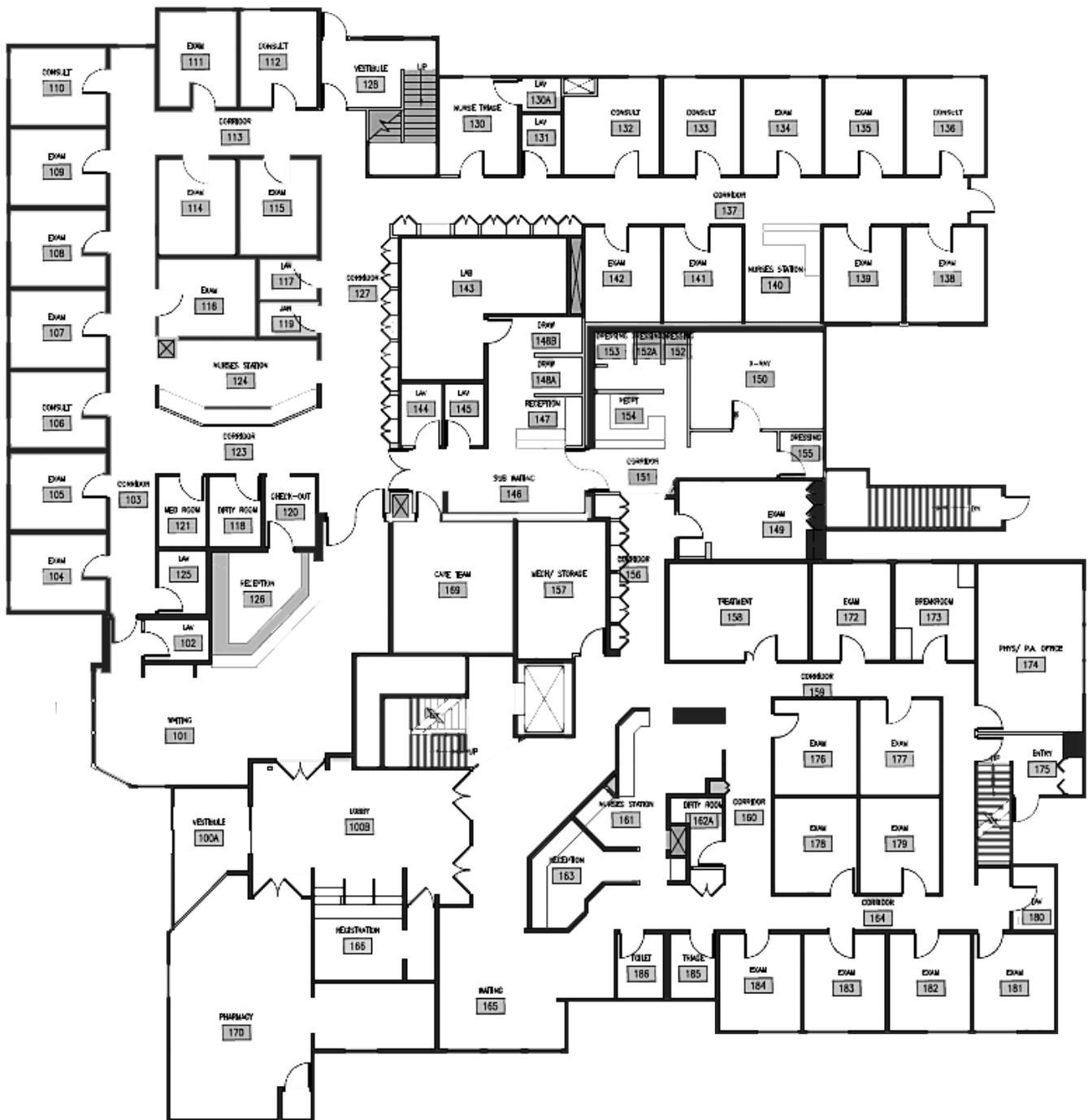


Interior Photos



Floor Plan

First Floor



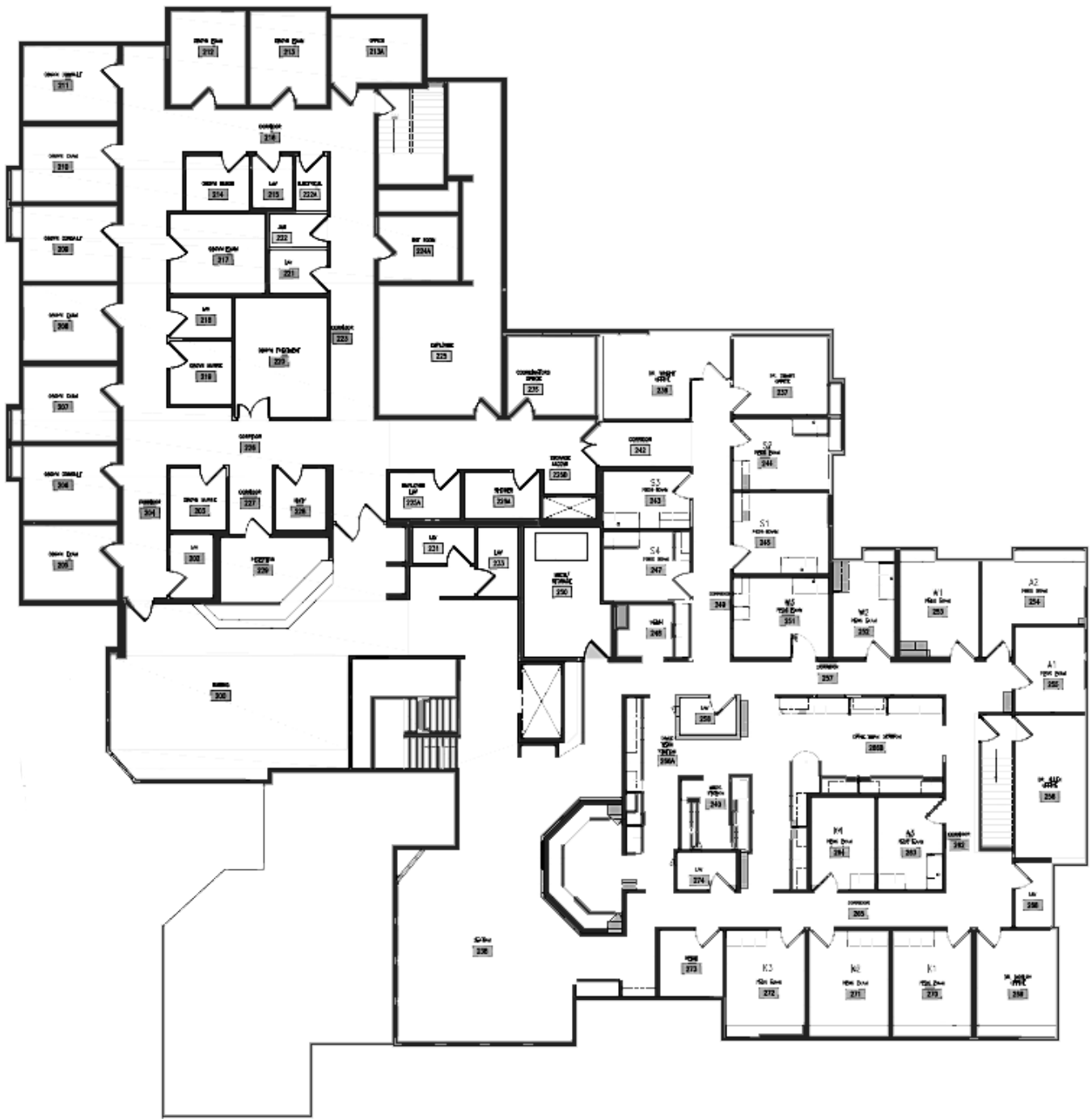
For Sale

7102 Mineral Point Road



Floor Plan

Second Floor



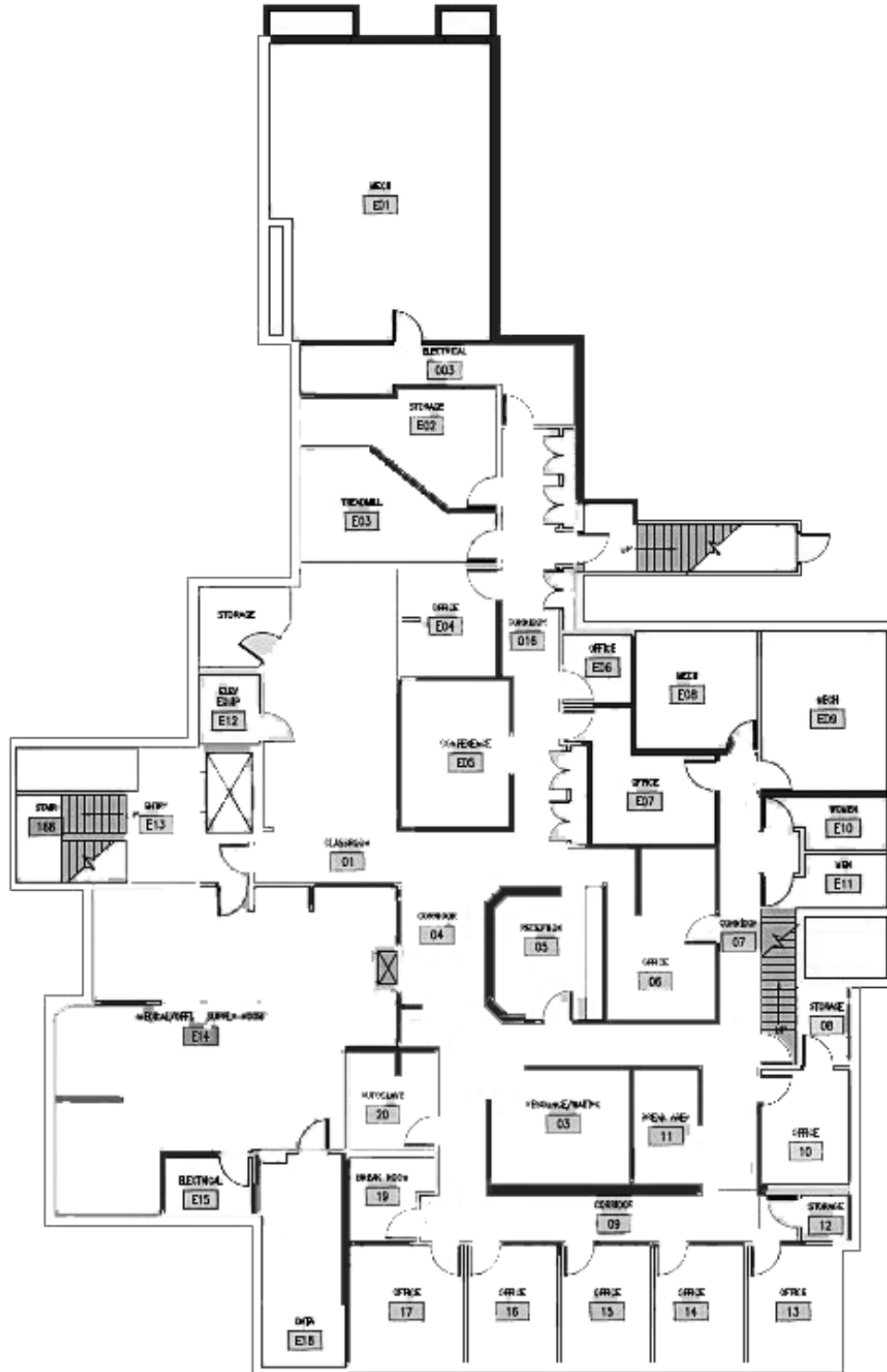
For Sale

7102 Mineral Point Road



Floor Plan

Basement

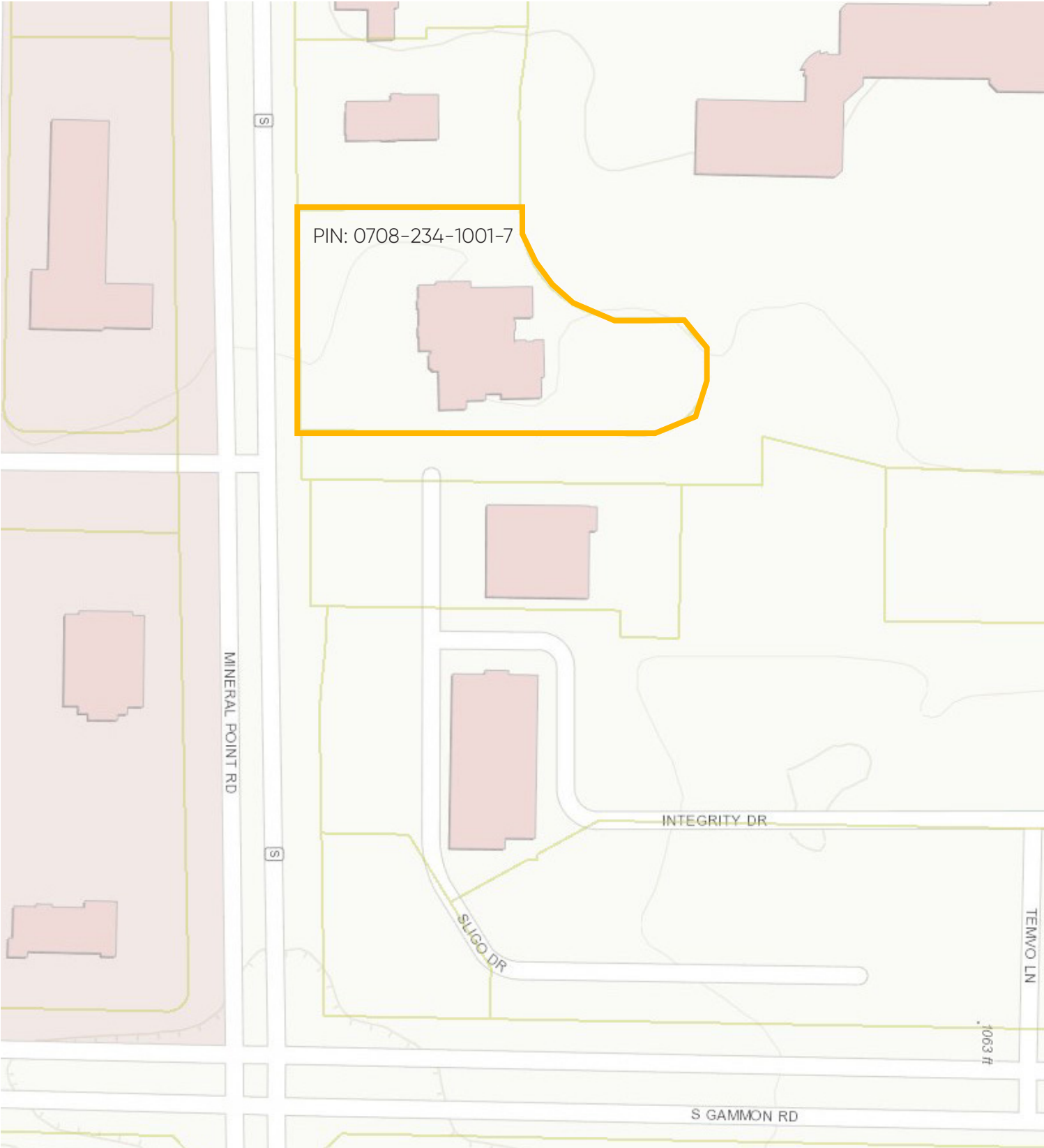


For Sale

7102 Mineral Point Road



Parcel Map



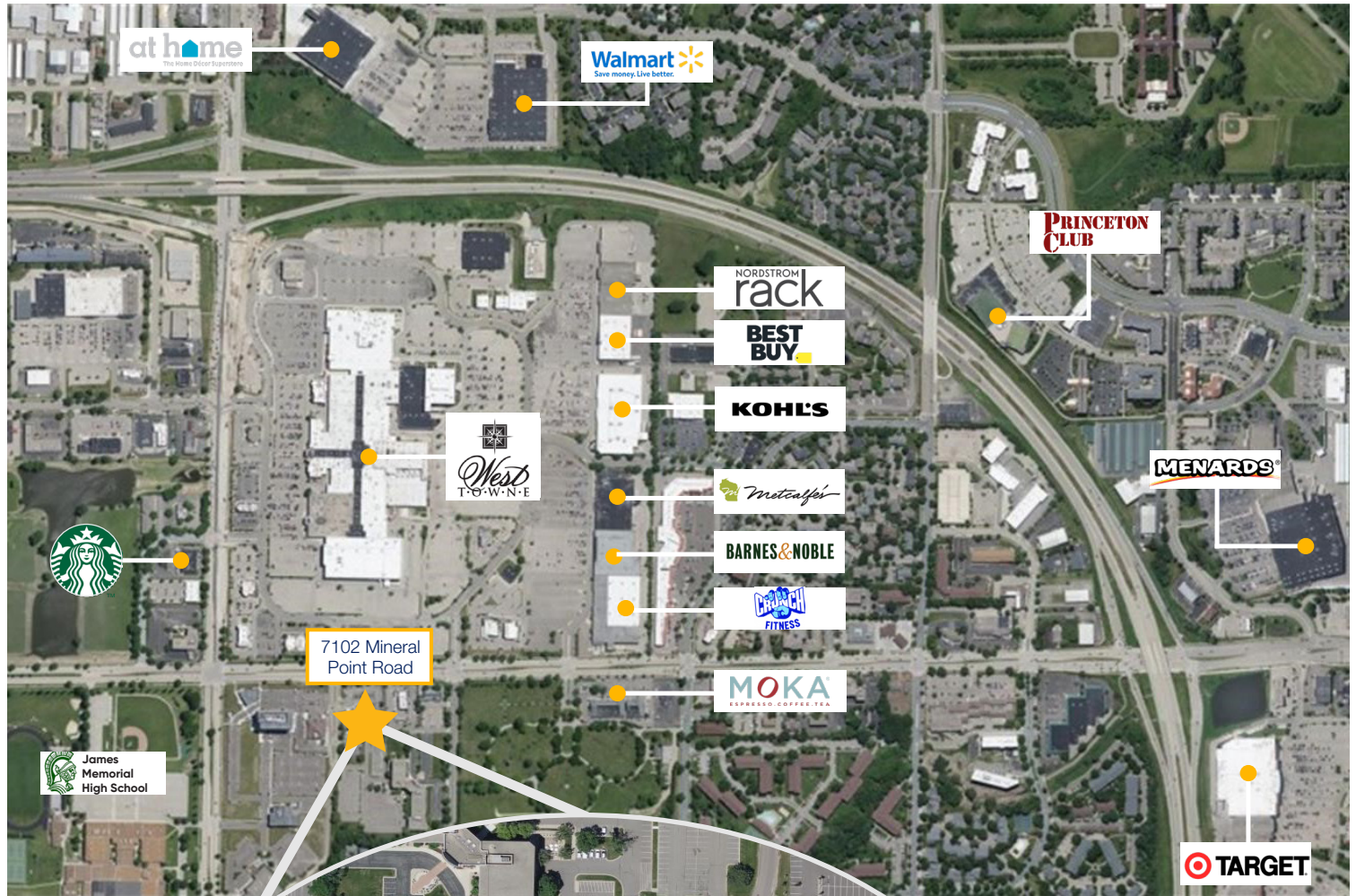
For Sale

7102 Mineral Point Road



Neighboring Tenants

Madison, WI



For Sale

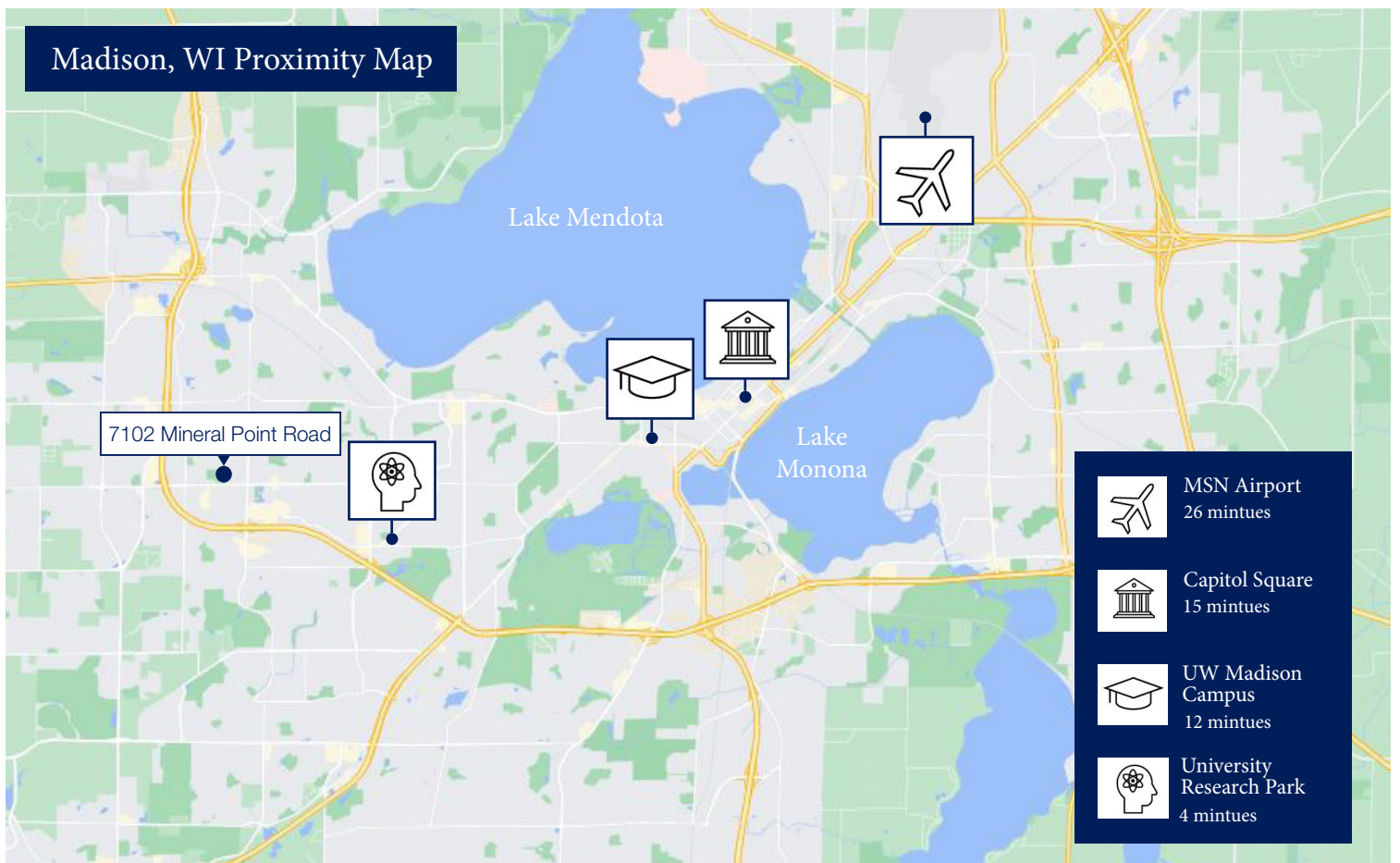
7102 Mineral Point Road



Aerial View & Proximity Map



Madison, WI Proximity Map



For Sale

7102 Mineral Point Road



Contact Us



Tim Ridders

608.669.4153

tridders@cresa.com



Allison Thompson

608.219.0400

amthompson@cresa.com

Cresa

613 Williamson Street

Suite 210

Madison, WI 53703

cresa.com/madison