



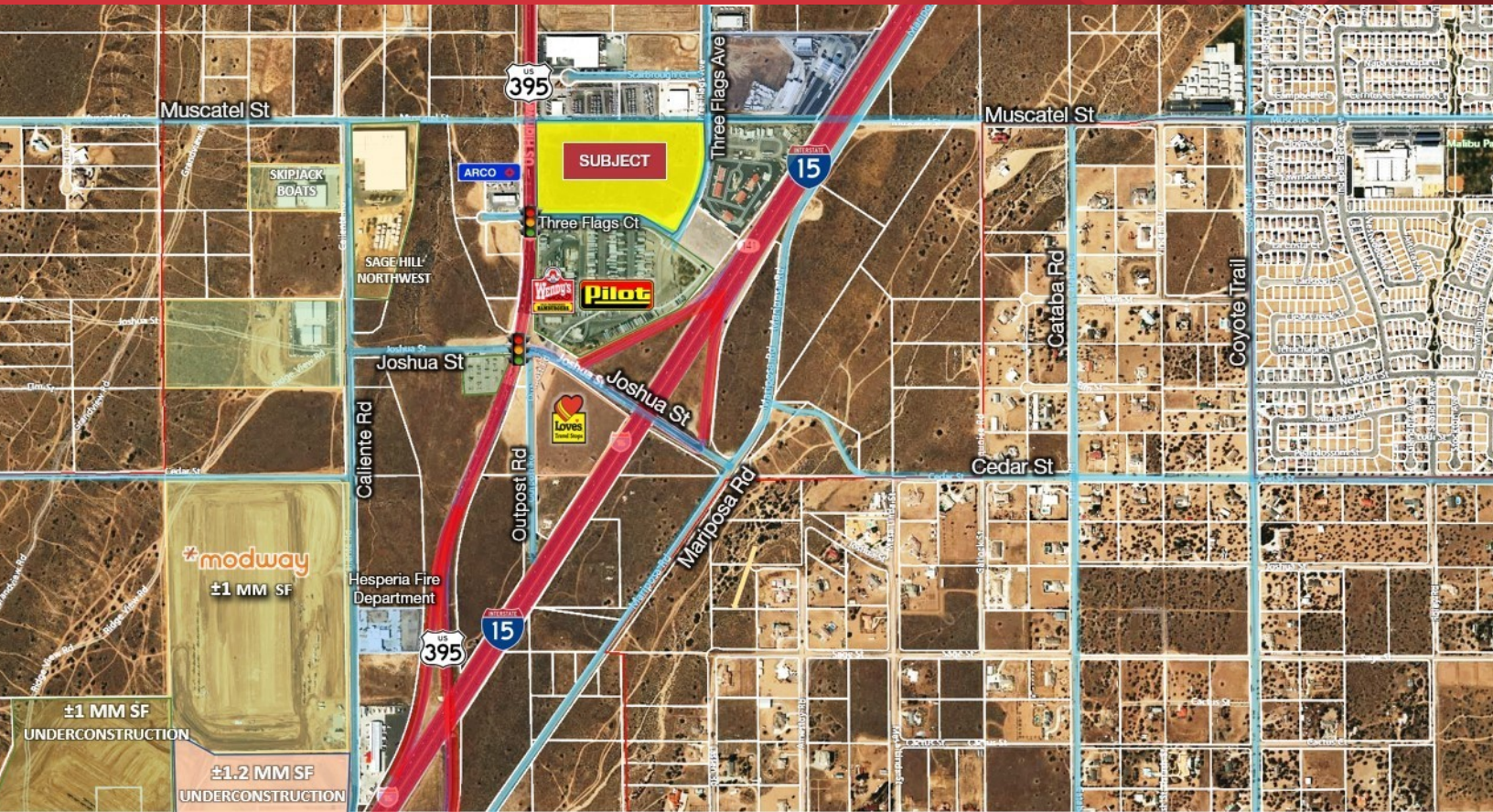
FOR LEASE



LAND



±18.71 ACRES



## 8685 US Highway 395

Hesperia, California 92344

### Property Highlights

- SIZE: ± 18.71 Acres
- APN: 3039-361-09
- ZONING: CIBP - Commercial/Industrial Business Park

### Property Description

- Signalized Corner on Hwy 395
- I-15 Freeway Daily Traffic Count- 104,000
- Exceptional Freeway Visibility
- Available for long term lease



**Mehdi Mostaedi, ALC**  
 Executive Managing Director | 760.780.4210  
 mmostaedi@naicapital.com | CalDRE #01392527







**FOR LEASE**



**LAND**

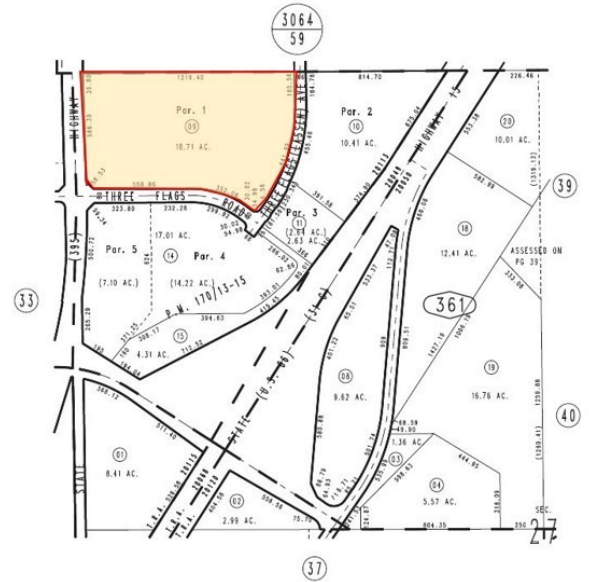


**±18.71 ACRES**



N.W.1/4 Sec. 27, T.4N., R.5W., S.B.M.

City of Hesperia  
Tax Rate Area  
20049,20050,20068  
20113,20115,20120



No. 12479, P.W. 170/13-15

Pin. N.W.1/4, Sec. 27  
T.4N., R.5W.

Assessor's Map  
Book 3039 Page 36  
San Bernardino County

**Mehdi Mostaedi, ALC**  
Executive Managing Director | 760.780.4210  
mmostaedi@naicapital.com | CalDRE #01392527



www.naicapital.com

NO WARRANTY, EXPRESS OR IMPLIED, IS MADE AS TO THE ACCURACY OF THE INFORMATION CONTAINED HEREIN. THIS INFORMATION IS SUBMITTED SUBJECT TO ERRORS, OMISSIONS, CHANGE OF PRICE, RENTAL OR OTHER CONDITIONS, WITHDRAWAL WITHOUT NOTICE, AND IS SUBJECT TO ANY SPECIAL LISTING CONDITIONS IMPOSED BY OUR PRINCIPALS, COOPERATING BROKERS, BUYERS, TENANTS AND OTHER PARTIES WHO RECEIVE THIS DOCUMENT SHOULD NOT RELY ON IT, BUT SHOULD USE IT AS A STARTING POINT OF ANALYSIS, AND SHOULD INDEPENDENTLY CONFIRM THE ACCURACY OF THE INFORMATION CONTAINED HEREIN THROUGH A DUE DILIGENCE REVIEW OF THE BOOKS, RECORDS, FILES AND DOCUMENTS THAT CONSTITUTE RELIABLE SOURCES OF THE INFORMATION DESCRIBED HEREIN. LOGOS ARE FOR IDENTIFICATION PURPOSES ONLY AND MAY BE TRADEMARKS OF THEIR RESPECTIVE COMPANIES. NAI CAPITAL, INC. CAL DRE LIC. #02130474