



For Lease

2311 Jolly Rd,
Okemos, MI 48864

Woodland Square

Woodland Square Shopping Center is a 24,000+ SF retail center located on Jolly Rd, just west of Okemos Rd and the I-96 interchange. This center offers a great tenant mix with high visibility and plenty of doorstep parking.



2501 Coolidge Rd, Suite 300
East Lansing, MI 48823
P: +1 517 662 3535
colliers.com/lansing



Shawn O'Brien, CCIM
Senior Vice President
+1 517 303 5554
shawn.obrien@colliers.com



Amy Richter-Perkins
Associate Vice President
+1 517 614 1314
amy.richter-perkins@colliers.com





Lease Rate | \$16.00-\$18.00/SF NNN

Suite SF Available

2325 2,600 SF*

*Owner Can Divide Space



Property Highlights

- Attractive retail center near several national retailers and restaurants
- Several new developments and projects in surrounding area
- Convenient nearby access to the Okemos/I-96 interchange
- Great visibility and generous door step parking

Lease Information

Total Center SF	24,024 SF
Lease Rate (With Divided Space Rate)	\$16.00-\$18.00/SF 2,000 or More/1,300 SF or Less
Lease Term	5 years
Estimated NNN's	\$5.50/SF/YR
Municipality	Alaiedon Township

Demographics

 [View Full Report](#)



Total Population
1 mile
5,004
3 miles
22,341
5 miles
90,721

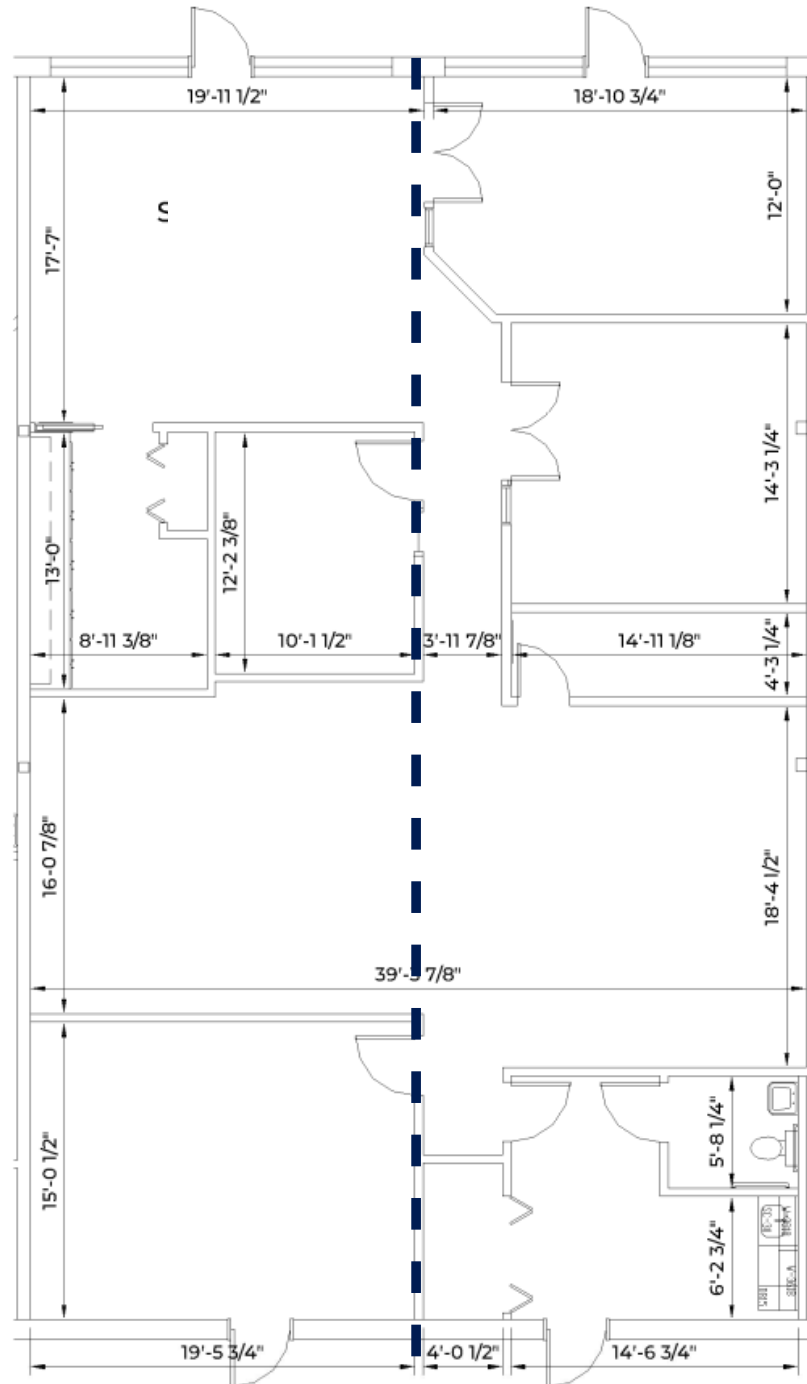


Avg HH Income
1 mile
\$125,443
3 miles
\$129,552
5 miles
\$101,652



Employed Workforce
1 mile
6,266
3 miles
16,861
5 miles
51,964

Floor Plans



Suite 2325 | 2,600 SF

