

CAPITAL COMMERCIAL

REAL ESTATE BROKERAGE

Capital Commercial Real Estate Brokerage, PLLC
114 N Washington—Suite 6 Naperville, IL 60540

Www.CapitalCommercialRE.com



FOR LEASE

Town Square—Downtown Plainfield

24402 W Lockport Street, Plainfield IL 60544

Property Summary

Available Spaces: Office Suite 206 (2,460 sf) & Office Suite 227 (2,160 sf)

Lease Rate: \$19.00—\$21.00 / psf modified gross

Highlights: Excellent Visibility

FOR LEASE INFORMATION:

Donna Ballentine | Principal Broker

Direct: 847-254-1215

Donna@CapitalCommercialRE.com

Jame Weinhold | Principal Broker

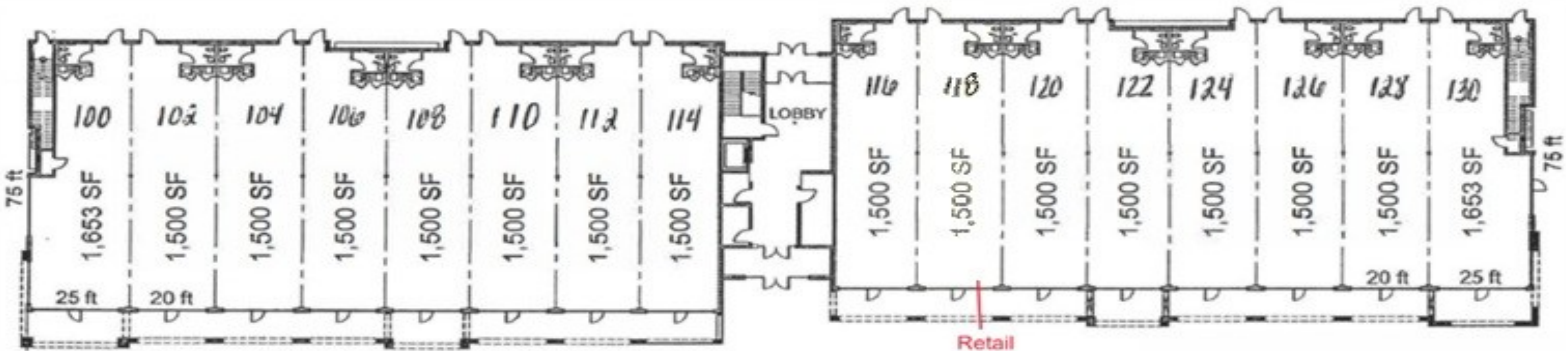
Direct: 630-947-6259

Jim@CapitalCommercialRE.com

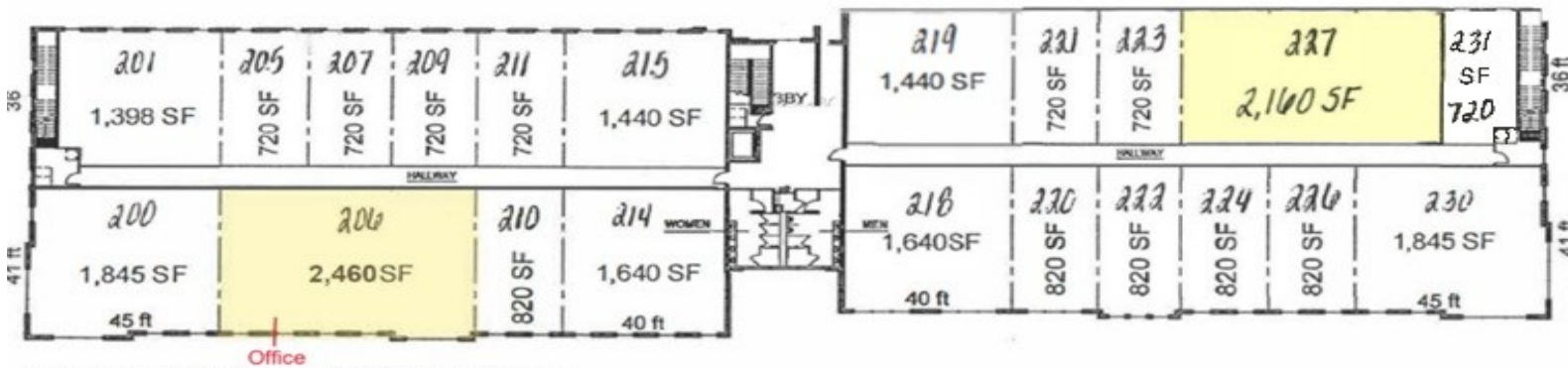
FOR LEASE 24402 W Lockport Street, Plainfield IL

24402 W Lockport | Site Plan

(Unit 206) - 2,460 sf | (Unit 227) - 2,160 sf



FIRST FLOOR RETAIL FLOOR PLAN



SECOND FLOOR PROFESSIONAL OFFICE FLOOR PLAN

While commercially reasonable effort has been made to provide accurate information, Capital Commercial Real Estate Brokerage, PLLC and its licensed brokers make no guarantees, representations or warranties as to the completeness or accuracy of the information presented herein. All interested parties are encouraged to perform their own due diligence and verify the information contained herein. This listing, its price, availability and circumstances are subject to change at any time or may be withdrawn for any reason without notice.

FOR LEASE INFORMATION:

Donna Ballentine | Principal Broker
Direct: 847-254-1215
Donna@CapitalCommercialRE.com

Jame Weinhold | Principal Broker
Direct: 630-947-6259
Jim@CapitalCommercialRE.com

FOR LEASE 24402 W Lockport Street, Plainfield IL

24402 W Lockport | Site Plan



While commercially reasonable effort has been made to provide accurate information, Capital Commercial Real Estate Brokerage, PLLC and its licensed brokers make no guarantees, representations or warranties as to the completeness or accuracy of the information presented herein. All interested parties are encouraged to perform their own due diligence and verify the information contained herein. This listing, its price, availability and circumstances are subject to change at any time or may be withdrawn for any reason without notice.

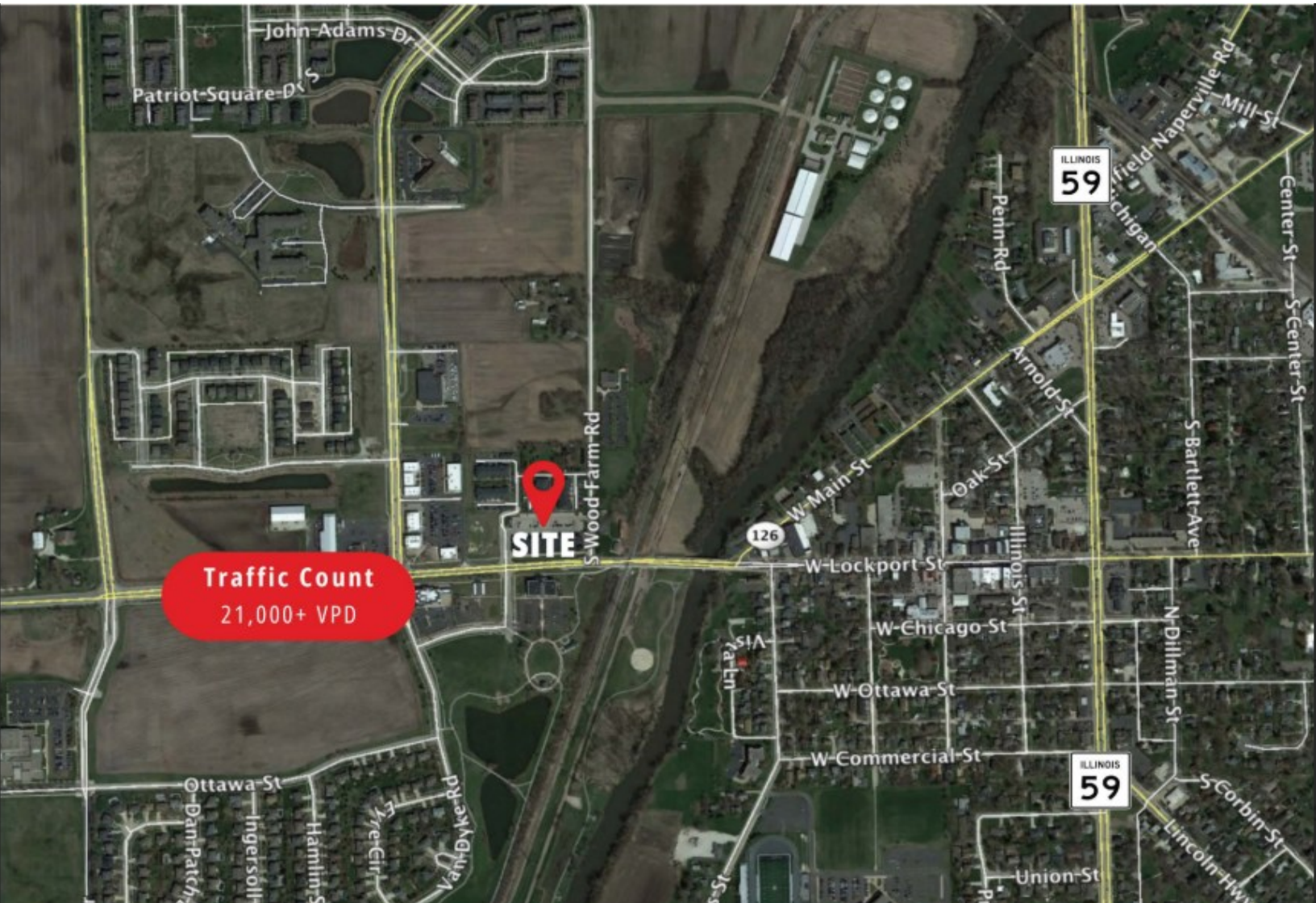
FOR LEASE INFORMATION:

Donna Ballentine | Principal Broker
Direct: 847-254-1215
Donna@CapitalCommercialRE.com

Jame Weinhold | Principal Broker
Direct: 630-947-6259
Jim@CapitalCommercialRE.com

FOR LEASE 24402 W Lockport Street, Plainfield IL

24402 W Lockport | Site Plan



While commercially reasonable effort has been made to provide accurate information, Capital Commercial Real Estate Brokerage, PLLC and its licensed brokers make no guarantees, representations or warranties as to the completeness or accuracy of the information presented herein. All interested parties are encouraged to perform their own due diligence and verify the information contained herein. This listing, its price, availability and circumstances are subject to change at any time or may be withdrawn for any reason without notice.

FOR LEASE INFORMATION:

Donna Ballentine | Principal Broker
Direct: 847-254-1215
Donna@CapitalCommercialRE.com

Jame Weinhold | Principal Broker
Direct: 630-947-6259
Jim@CapitalCommercialRE.com