

26775 Malibu Hills Road, Calabasas, CA 91301

Malibu Hills Executive Center



Available For Lease

Brian Forster

President

Direct: 818.862.2774

brian@pacificpartnerscre.com

CA BRE: 01093508

Lisa Shirliff

Investment Sales & Leasing

Direct: 818.878-8853

lisa@pacificpartnerscre.com

CA DRE: 01891301

Michelle Buckner

Vice President

Direct: 818.284.4020

michelle@ppc-re.com

CA DRE: 02063112



PACIFIC PARTNERS
COMMERCIAL, INC.

23901 Calabasas Rd., Suite 2024

Calabasas, CA 91302

Office 818.798.3090

The information herein has been furnished from sources which we deem reliable, but has not been verified by Pacific Partners Commercial, Inc. or its agents and for which we assume no liability. This marketing material is to be used for conceptual purposes only. All measurements and numerical data are approximate and to be verified by the prospective buyer. 2/2/2026

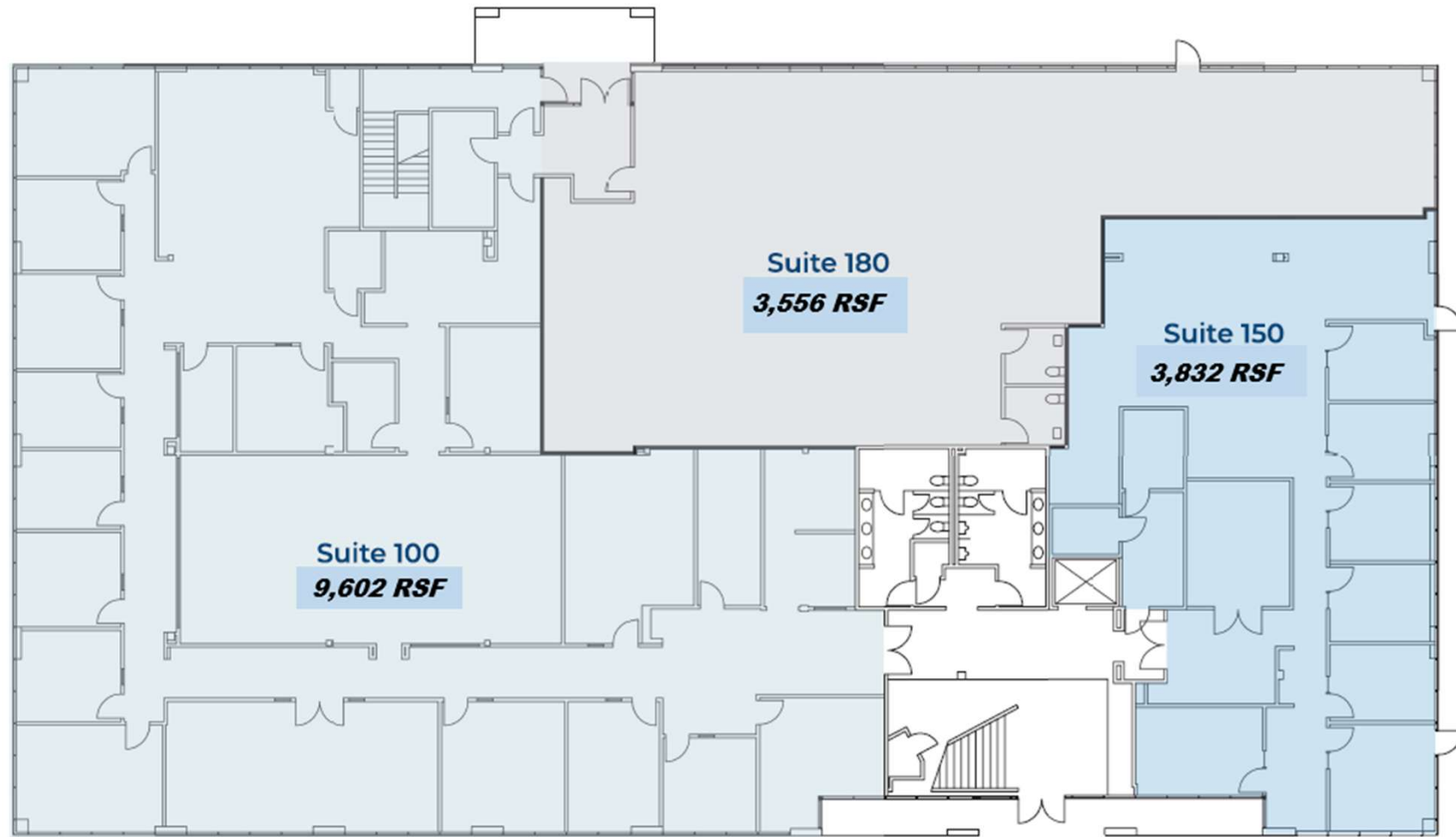
Suites for Lease

Suite	RSF	Rate	Notes
100	9,602	\$2.50	12 window offices, 4 interior offices, conference room, warehouse area, reception, open area, kitchen & storage.
150	3,832	\$2.50	6 window offices, 4 interior offices, conference room, reception, open area, & storage
180	3,566	\$2.50	Open area, open kitchen, & two restrooms.



Malibu Hills Executive Center

Availabilities – 1st Floor



Malibu Hills Executive Center

Property Highlights



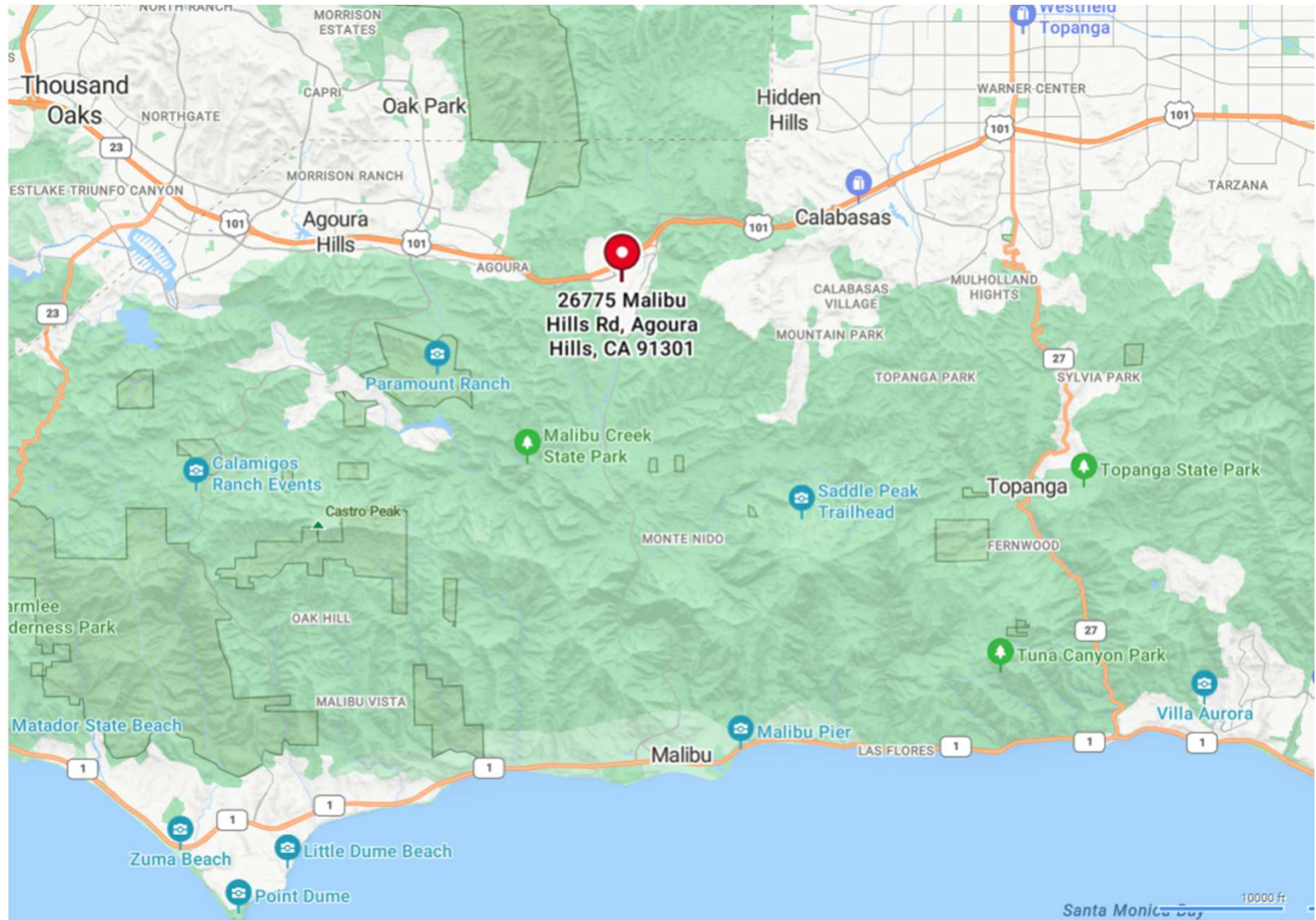
- Under new ownership
- State of the art building security
- No gross receipts tax
- Monument signage available
- Excellent access to 101 freeway & PCH
- Above market parking ratio 4.6/1,000 USF
- Fiber provided by AT&T
- Close proximity to Erewhon, Starbuck's, Albertson's

Malibu Hills Executive Center

Malibu Hills Executive Center



Map Overview



26775 Malibu Hills Road, Calabasas, CA 91301

Pacific Partners Commercial
23901 Calabasas Rd., Suite 204
Calabasas, CA 91302
info@pacificpartnerscre.com
Office 818.862.2848



26775 Malibu Hills Road, Calabasas, CA 91301

Property VICINITY ▶▶

Restaurants/Food Stores:

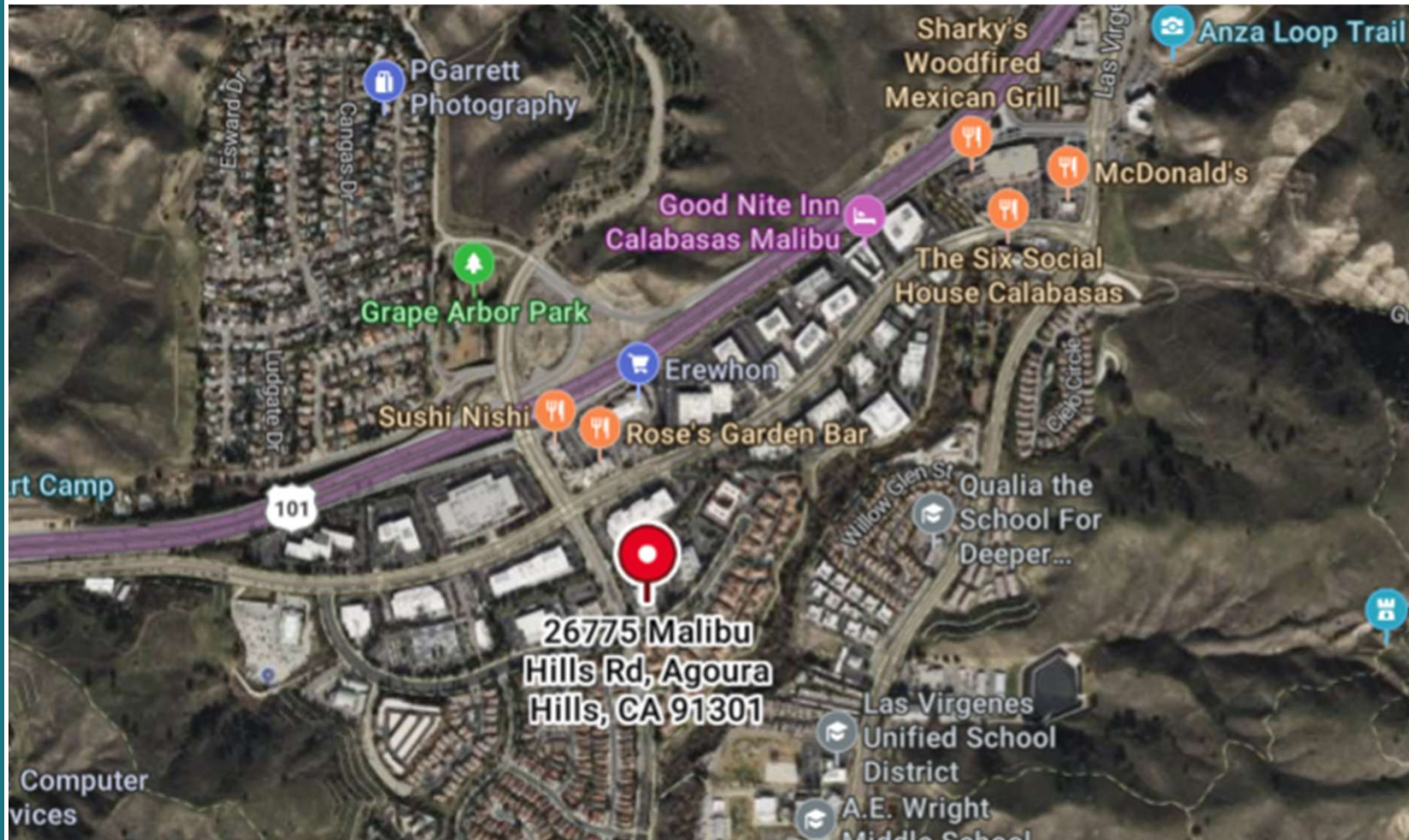
Erewhon, Rose Garden Bar, Starbuck's, Sharkey's Mexican Grill, Sushi Nishi, McDonald's, Albertson's, & many more.

Hotels:

Four Season's Cambria Hotel, Good Nite Inn

Parks/Hiking Trails:

Juan Bautista de Anza Park, Malibu Creek State Park, Calabasas Bark Park, etc.



Malibu Hills Executive Center

Brian Forster

President
Direct: 818.862.2774
brian@pacificpartnerscre.com
CA DRE: 01093508

Lisa Shirtliff

Investment Sales & Leasing
Direct: 818.878-8853
lisa@pacificpartnerscre.com
CA DRE: 01891301

Michelle Buckner

Vice President
Direct: 818.284.4020
Michelle@ppc-re.com
CA DRE: 02063112

Pacific Partners Commercial

23901 Calabasas Rd., Suite 2024
Calabasas, CA 91302
info@pacificpartnerscre.com
Office 818.862.2848

