

FOR SALE



PRICE

\$1,444,860 (\$230 PSF)

PROPERTY DETAILS

- DTLB Owner-user Medical Office Building for Sale
- Building Size: ±6,282 RSF
- Land Size: ±7,501 SF
- Zoning: PD-30, East Village DTLB District
- Large Lot: Utilized for Additional Parking



LOCAL EXPERTISE. INTERNATIONAL REACH. WORLD CLASS.

GAVIN GILL

Associate | DRE LIC 01936303

e gavingill@leelalb.com

p 562.354.2529

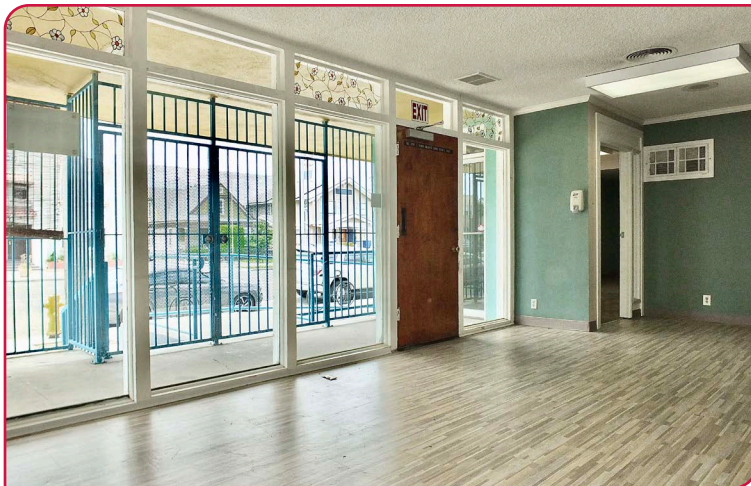
LESLIE STONICK

COMPASS | DRE LIC 01363678

e leslie@lesismor.com

Lee & Associates Los Angeles - Long Beach
DRE License 0169854

21250 Hawthorne Blvd, Suite 700
Torrance, CA 90503



LOCAL EXPERTISE. INTERNATIONAL REACH. WORLD CLASS.

GAVIN GILL

Associate | DRE LIC 01936303

e gavingill@leelalb.com

p 562.354.2529

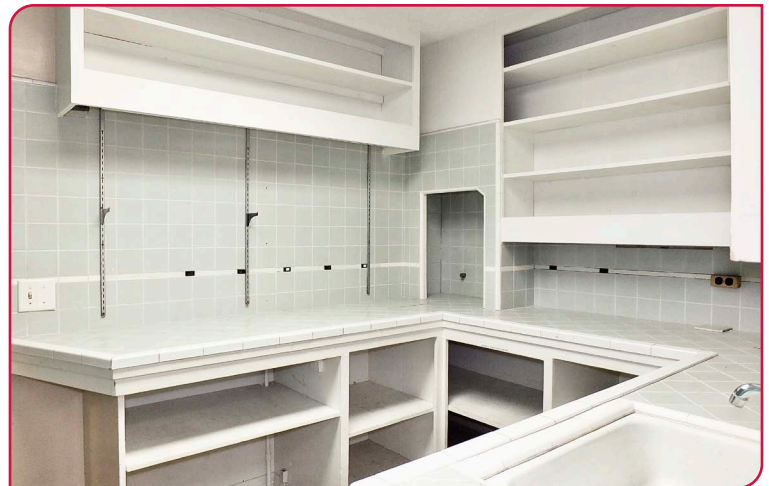
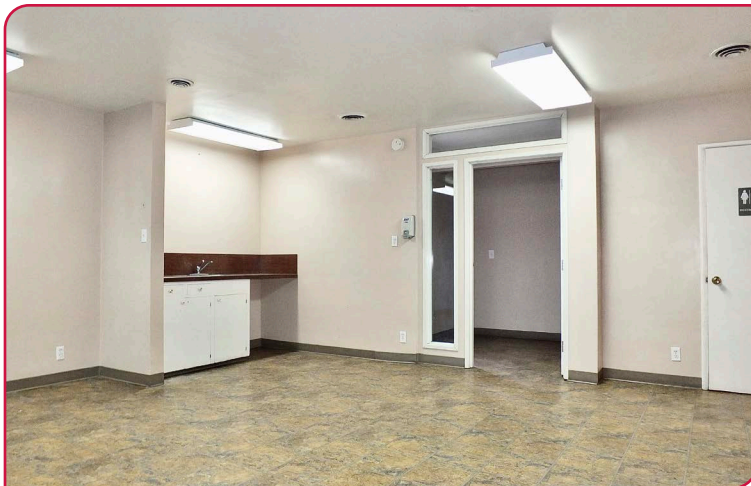
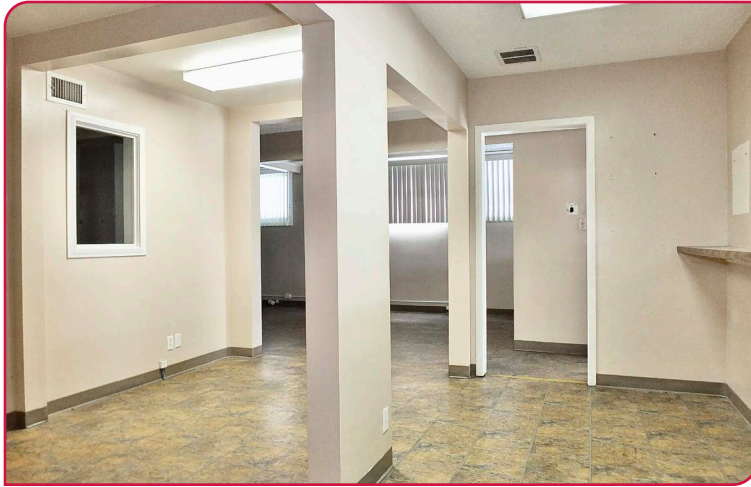
LESLIE STONICK

COMPASS | DRE LIC 01363678

e leslie@lesismor.com

Lee & Associates Los Angeles - Long Beach
DRE License 0169854

21250 Hawthorne Blvd, Suite 700
Torrance, CA 90503



LOCAL EXPERTISE. INTERNATIONAL REACH. WORLD CLASS.

GAVIN GILL

Associate | DRE LIC 01936303

e gavingill@leelalb.com

p 562.354.2529

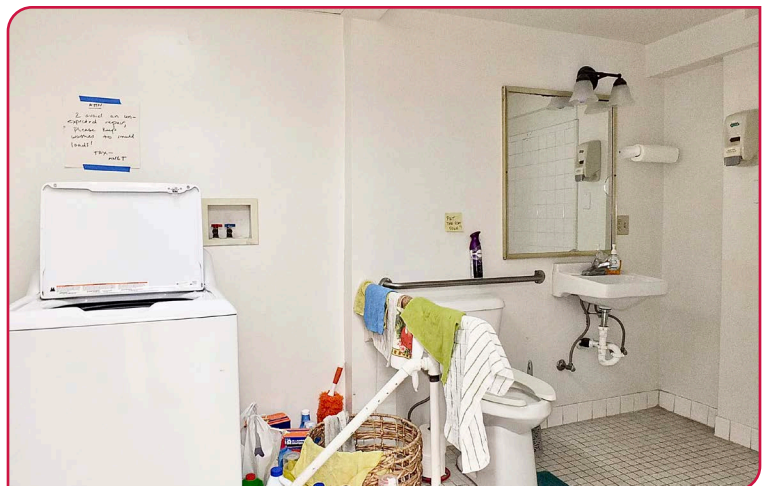
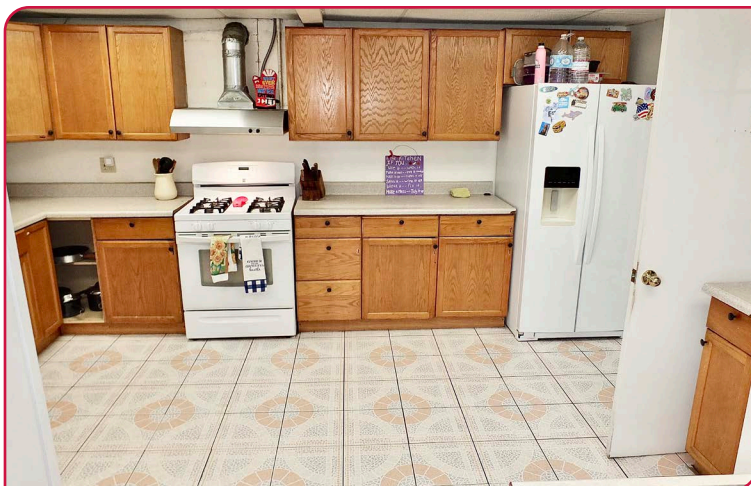
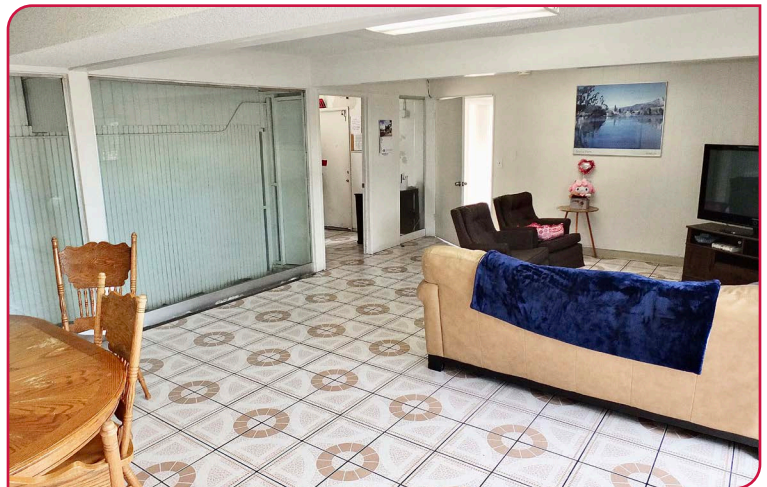
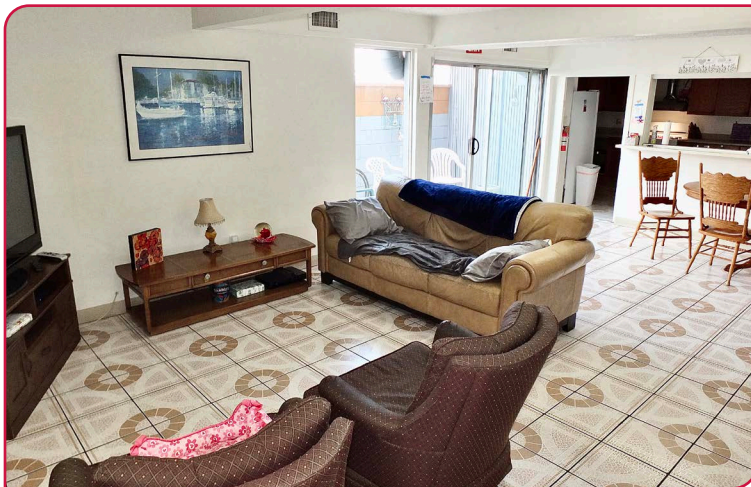
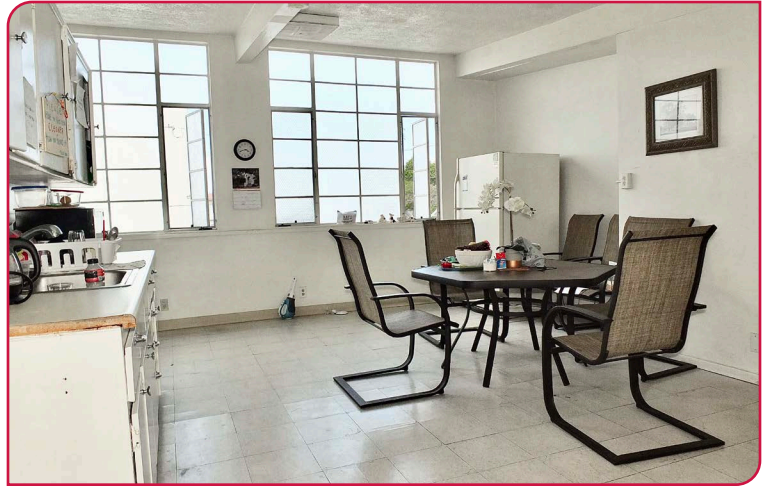
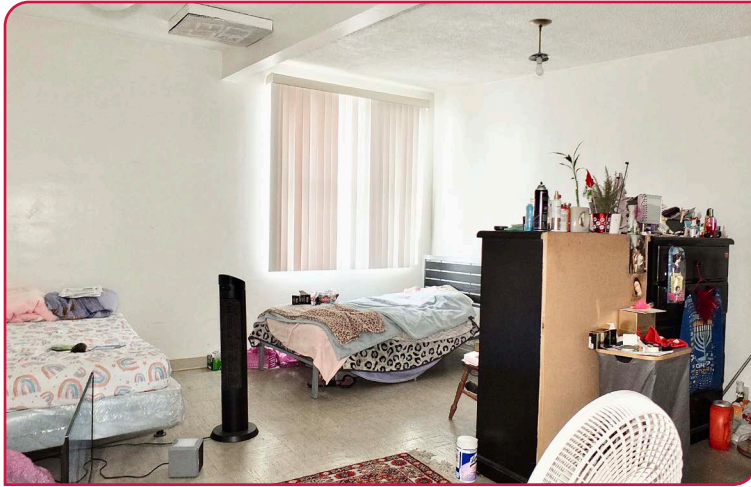
LESLIE STONICK

COMPASS | DRE LIC 01363678

e leslie@lesismor.com

Lee & Associates Los Angeles - Long Beach
DRE License 0169854

21250 Hawthorne Blvd, Suite 700
Torrance, CA 90503



LOCAL EXPERTISE. INTERNATIONAL REACH. WORLD CLASS.

GAVIN GILL

Associate | DRE LIC 01936303

e gavingill@leelalb.com

p 562.354.2529

LESLIE STONICK

COMPASS | DRE LIC 01363678

e leslie@lesismor.com

Lee & Associates Los Angeles - Long Beach
DRE License 0169854

21250 Hawthorne Blvd, Suite 700
Torrance, CA 90503