



**Cal Select
Properties, Inc.**

MANAGEMENT - LEASING - INVESTMENTS

1964 Westwood Blvd. - Ste 240 - Los Angeles, CA 90025 - Mail - P.O. Box 241668 - Los Angeles, CA 90024
310.470.9350 (P) - 310.470.9395 (F) - www.calselectproperties.com

**PRIME OFFICE SPACE
FOR LEASE
1902 Westwood Boulevard. Los Angeles. 90025**



- Location:** Southeast corner of Westwood Boulevard and Missouri Avenue
- Space:** Suite 202: Approx. 246 rentable square feet
Suite 207: Approx. 249 rentable square feet
Suite 209: Approx. 262 rentable square feet
- Rental Rate:** Suite 202: \$860.00 per month (\$3.50 FSG), net of janitorial
Suite 207: \$870.00 per month (\$3.50 FSG), net of janitorial
Suite 209: \$1,100.00 per month (\$4.20 FSG), net of janitorial
- Features:** Large Single Office. New paint and flooring with signed Lease. Multiple storage closets.
- Parking:** Ample metered and open residential street parking. Surface parking lot with unreserved parking.
- Contact:** Chad M. Eshaghoff, CPM, CCIM ext. 25
chade@calselectproperties.com DRE License 01135079

Cal Select Properties, Inc. DRE License 01473862

The information furnished herein has been obtained from sources deemed reliable. No representation or warranty as to the accuracy thereof is made, and such information is subject to errors, omissions, prior sale, lease or withdrawal without notice.



**Cal Select
Properties, Inc.**
MANAGEMENT - LEASING - INVESTMENTS

1964 Westwood Blvd. - Ste 240 - Los Angeles, CA 90025 - Mail - P.O. Box 241668 - Los Angeles, CA 90024
310.470.9350 (P) - 310.470.9395 (F) - www.calselectproperties.com

**PRIME OFFICE SPACE
FOR LEASE**
1902 Westwood Boulevard. Los Angeles. 90025



Cal Select Properties, Inc. DRE License 01473862

The information furnished herein has been obtained from sources deemed reliable. No representation or warranty as to the accuracy thereof is made, and such information is subject to errors, omissions, prior sale, lease or withdrawal without notice.



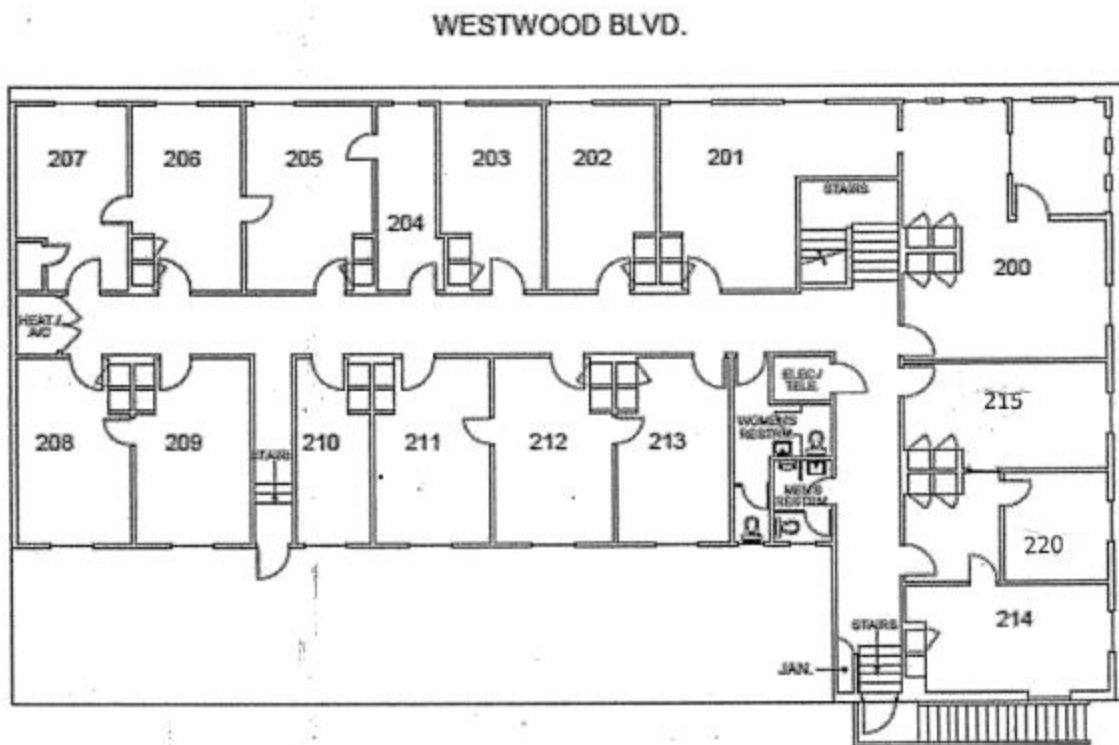
**Cal Select
Properties, Inc.**

MANAGEMENT - LEASING - INVESTMENTS

1964 Westwood Blvd. - Ste 240 - Los Angeles, CA 90025 - Mail - P.O. Box 241668 - Los Angeles, CA 90024
310.470.9350 (P) - 310.470.9395 (F) - www.calselectproperties.com

**PRIME OFFICE SPACE
FOR LEASE**

1902 Westwood Boulevard. Los Angeles. 90025



Cal Select Properties, Inc. DRE License 01473862

The information furnished herein has been obtained from sources deemed reliable. No representation or warranty as to the accuracy thereof is made, and such information is subject to errors, omissions, prior sale, lease or withdrawal without notice.