



5 OFFICE SUITES ON 5TH AVE

OFFICE PROPERTY FOR LEASE | 534 NORTH 5TH AVENUE | POCA TELLO, ID 83201



CONTACT



NICK TERRY
208.357.4678
nickt@tokcommercial.com

HIGHLIGHTS



Quiet, private office space consisting of five separate offices across 1,000 SF with a private restroom.

Individual offices available - contact agent for pricing

Excellent visibility on 5th Avenue with traffic counts of approximately 13,000 vehicles per day.

Prime central location with easy access to amenities, downtown Pocatello, and Idaho State University.

High-traffic corridor ideal for professional services or small business operations.

Move-in ready space with a functional layout suited for a variety of office uses.

DETAILS



PROPERTY TYPE:	Office
AVAILABLE SPACE:	1,000 SF (Total)
LEASE RATE (ENTIRE SUITE):	\$1,500.00/mo. (NNN)
LEASE RATE (INDIVIDUAL OFFICES):	Contact Agent
AVAILABILITY:	30-Day Notice
PARKING:	Street Parking

UPDATED: OCTOBER 03, 2025

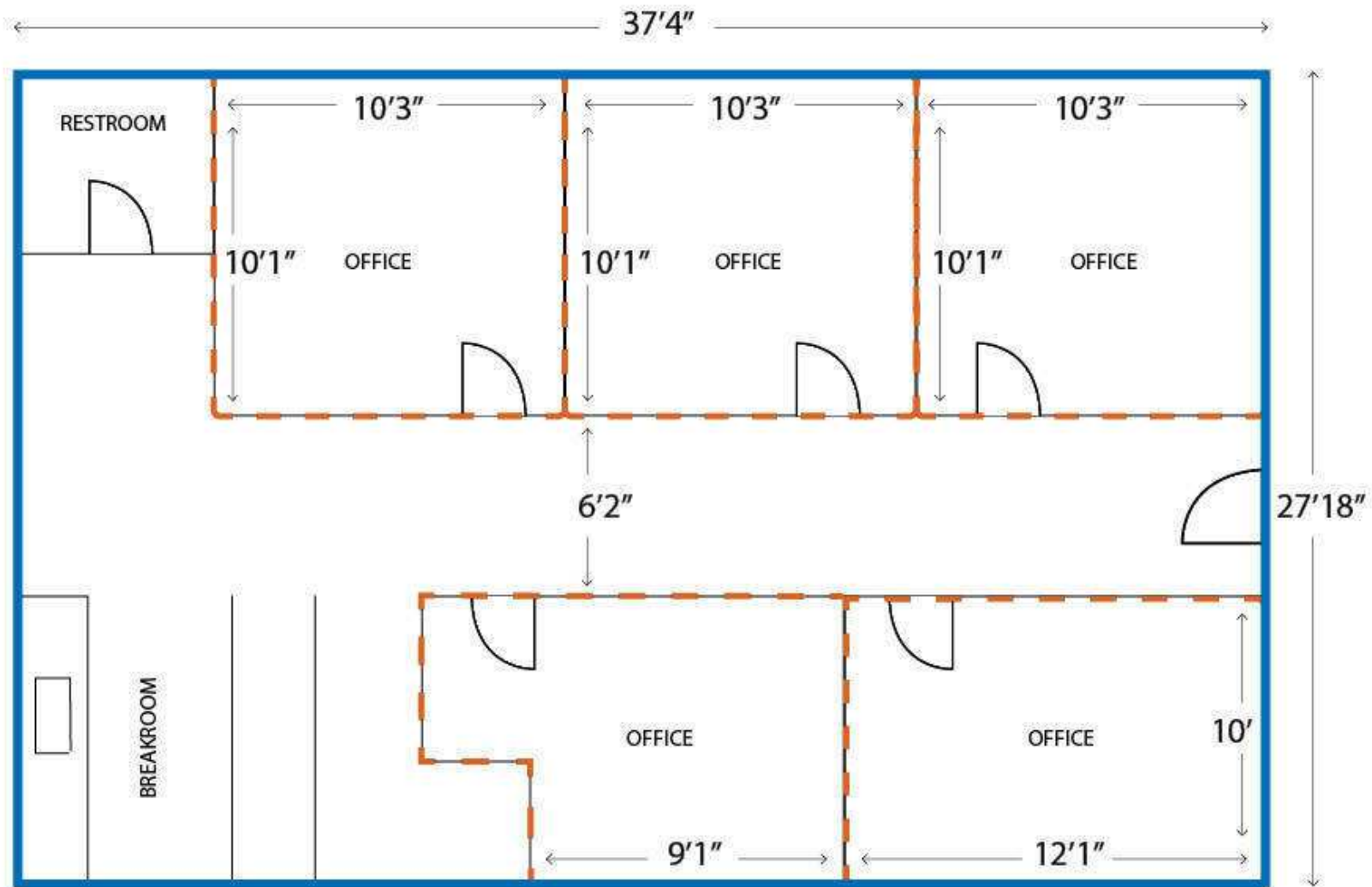
THIS PROPERTY IS EXCLUSIVELY MARKETING BY TOK EASTERN IDAHO LLC DBA TOK COMMERCIAL

This information was obtained from sources believed reliable but cannot be guaranteed. Any opinions or estimates are used for example only.

TokCOMMERCIAL.COM

FIRST FLOOR

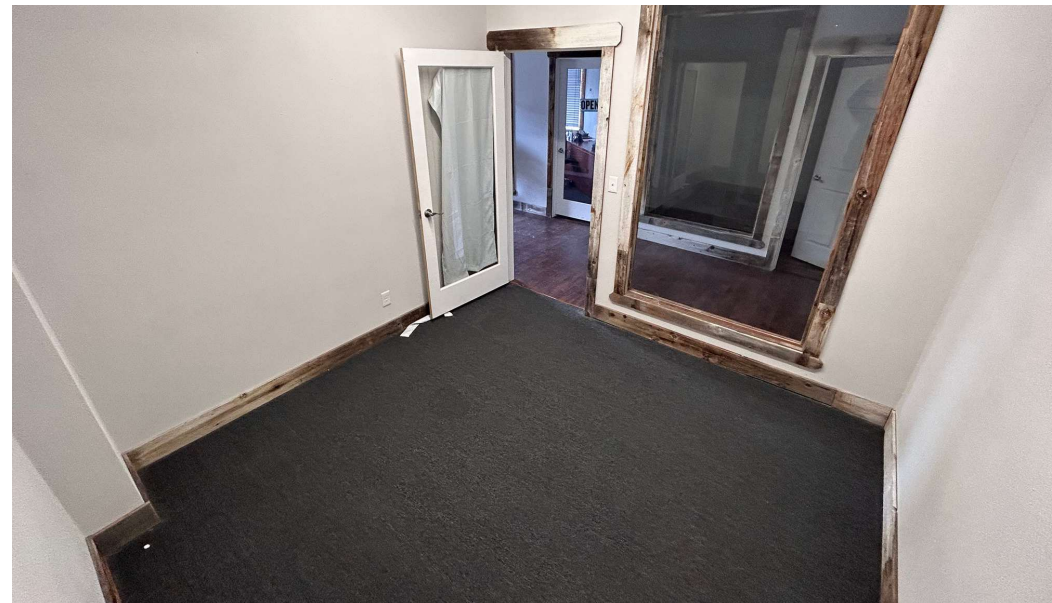
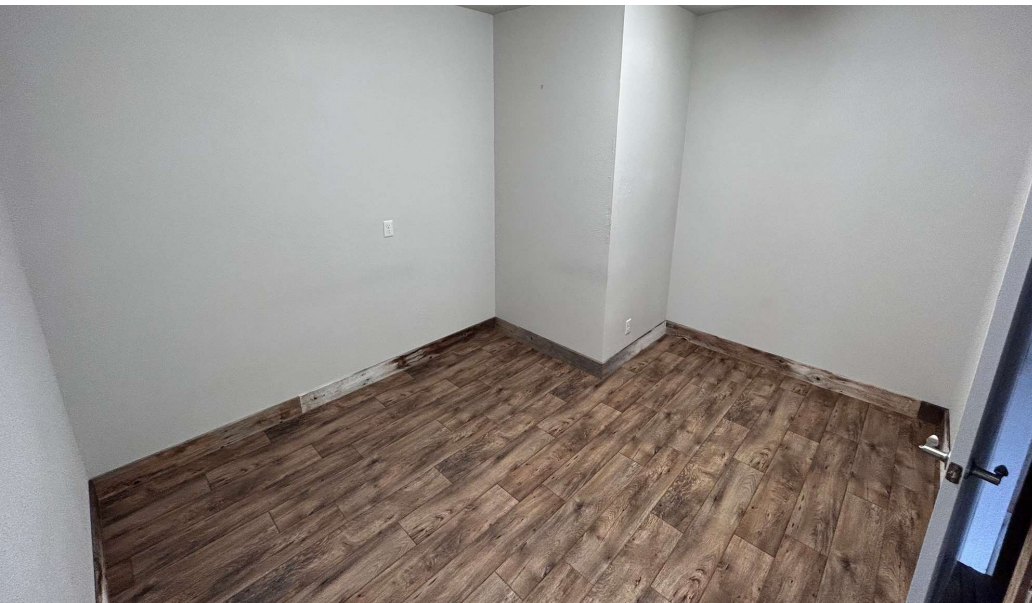
INDIVIDUAL OFFICE OPTIONS AVAILABLE - CONTACT AGENT



UPDATED: OCTOBER 03, 2025

THIS PROPERTY IS EXCLUSIVELY MARKETING BY TOK EASTERN IDAHO LLC DBA TOK COMMERCIAL

This information was obtained from sources believed reliable but cannot be guaranteed. Any opinions or estimates are used for example only.



UPDATED: OCTOBER 03, 2025

THIS PROPERTY IS EXCLUSIVELY MARKETING BY TOK EASTERN IDAHO LLC DBA TOK COMMERCIAL

This information was obtained from sources believed reliable but cannot be guaranteed. Any opinions or estimates are used for example only.



AREA DEMOGRAPHIC SUMMARY

POPULATION	HOUSEHOLDS	MED. INCOME	EMPLOYEES
1 MI 12,890	1 MI 5,962	1 MI \$45,604	1 MI 10,329
3 MI 46,297	3 MI 18,746	3 MI \$58,798	3 MI 21,566
5 MI 76,926	5 MI 29,796	5 MI \$68,934	5 MI 25,472

UPDATED: OCTOBER 03, 2025

THIS PROPERTY IS EXCLUSIVELY MARKETING BY TOK EASTERN IDAHO LLC DBA TOK COMMERCIAL

This information was obtained from sources believed reliable but cannot be guaranteed. Any opinions or estimates are used for example only.

