

Former Auto Store

Cincinnati, OH

Property Highlights

- + 8,448 SF Building
 - 5,913 SF Auto Service Center
 - 2,534 SF Office
- + Out-Parcel to High-Performing Kroger Marketplace
 - Zoned PD-B
- + Major retailers in the immediate area include Kroger Marketplace, Meijer, Walmart, Lowe's, JCPenney, Hobby Lobby, Dick's Sporting Goods, Marshall's, DSW, Michael's, Ulta and many others
- + Less than .5 miles from I-275 and 2 Miles from Cross-County Highway
- + Great Visibility and access from Colerain Ave & Springdale Rd
- + Large Pylon Sign on Colerain Ave
- + Perfect for Auto Sales/Service, Car Wash, QSR, or Retail
- + Current lease expires 7/31/2025, tenant has two five-year options to renew
- + Traffic Counts:
 - Colerain Ave : 35,246 ADT
 - Springdale Rd : 8,376 ADT
 - I-275 : 83,486 ADT

Contact Us

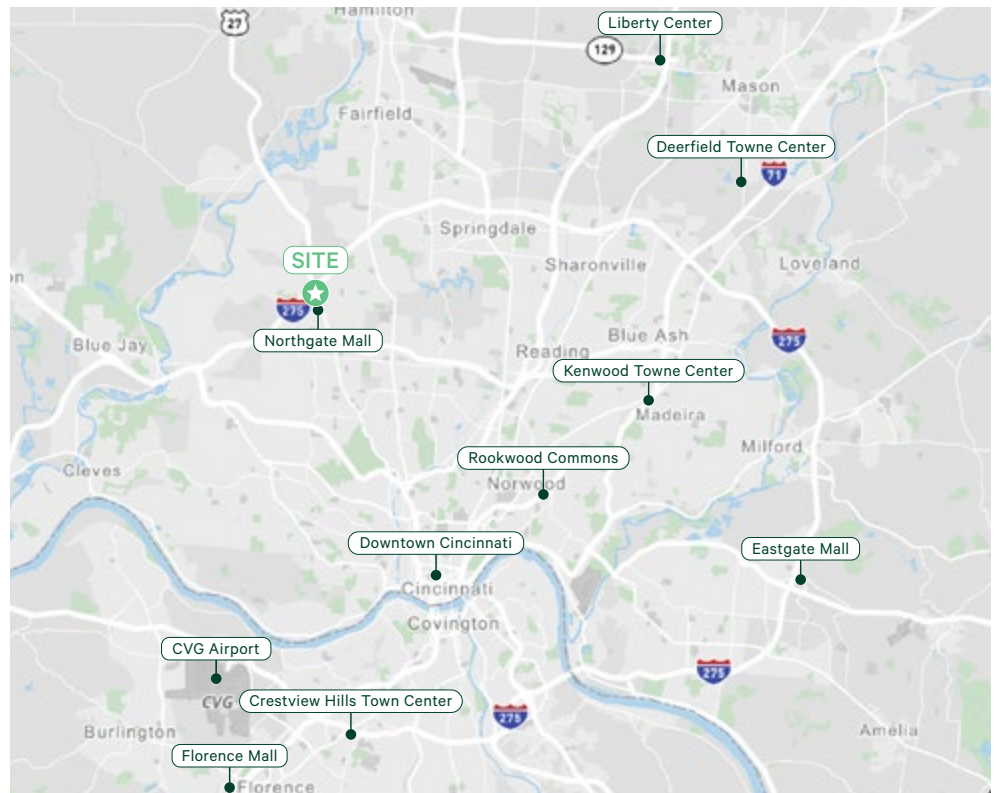
John Abraham

First Vice President

+1 513 369 1315

john.abraham@cbre.com

9797 Colerain Ave
Cincinnati, OH 45251



Former Auto Store

9797 Colerain Ave | Cincinnati, OH 45251

For Sublease

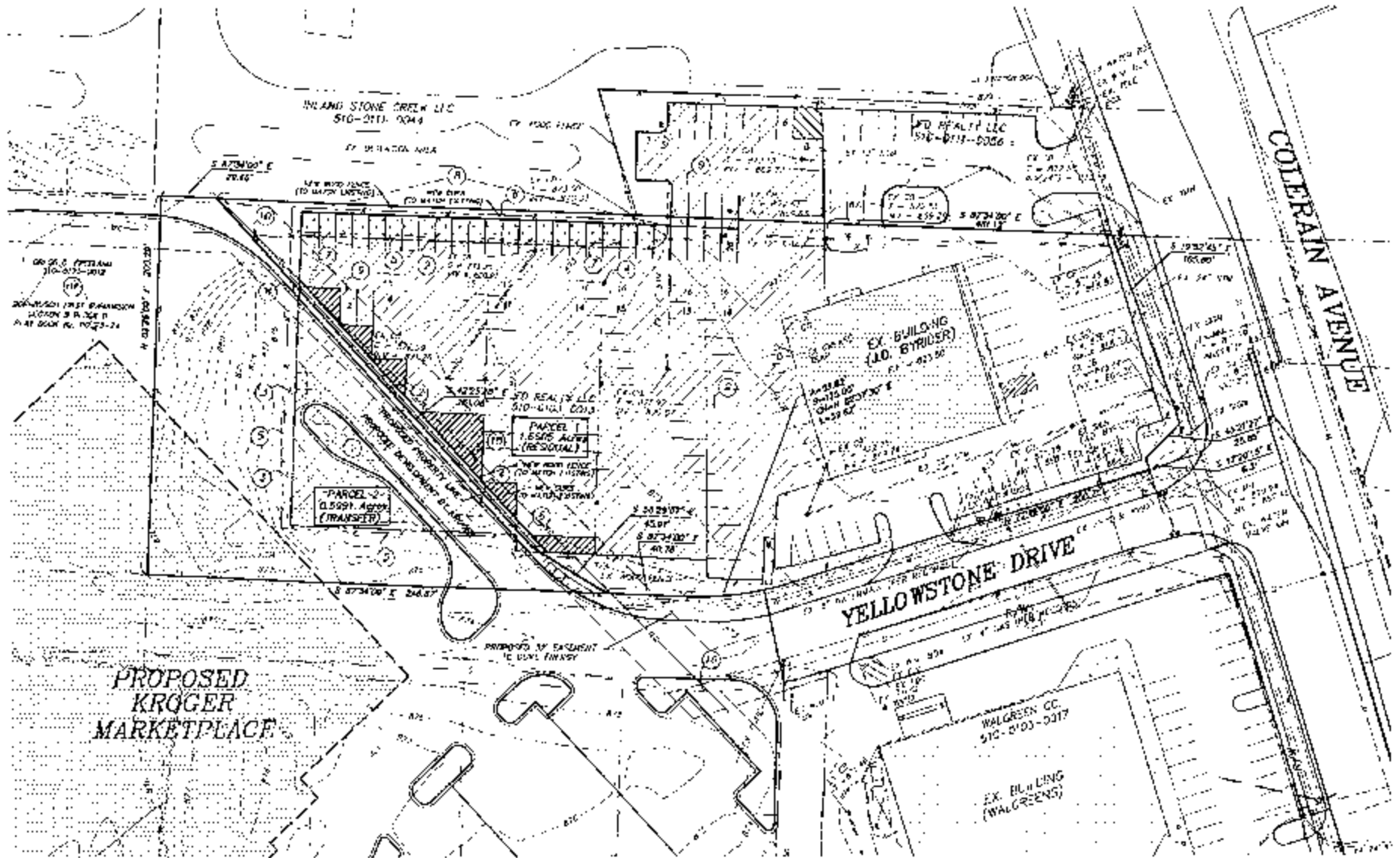
Site Overview



Market Overview



Site Plan



Former Auto Store

9797 Colerain Ave | Cincinnati, OH 45251

For Sublease

Market Insights

2023 Demographics	1 Miles	3 Miles	5 Miles
Population	10,692	57,982	155,794
Daytime Population	10,917	46,224	122,240
Median Age	40.7	40.3	40.5
Households	4,318	23,031	63,118
Average Household Income	\$80,729	\$85,729	\$88,362



Contact Us

John Abraham

First Vice President

+1 513 369 1315

john.abraham@cbre.com

© 2023 CBRE, Inc. All rights reserved. This information has been obtained from sources believed reliable, but has not been verified for accuracy or completeness. You should conduct a careful, independent investigation of the property and verify all information. Any reliance on this information is solely at your own risk. CBRE and the CBRE logo are service marks of CBRE, Inc. All other marks displayed on this document are the property of their respective owners, and the use of such logos does not imply any affiliation with or endorsement of CBRE. Photos herein are the property of their respective owners. Use of these images without the express written consent of the owner is prohibited.

CBRE