

LEASE - LAKECREST BUSINESS CENTER
2734 S 3600 W STE F & G
SALT LAKE CITY, UTAH

ADVENT
PROPERTY  ADVISORS

LEASE RATE:
\$1.10 PSF, NNN

PROPERTY DETAILS

Total SF: 2,520 SF
Office: 1,680 SF
Warehouse: 840 SF
Doors: (2) 10' x 10' GL
Power: 3 phase
Ceiling: 13' - 15' Clear
Zoning: C-3



HIGHLIGHTS

- Professional industrial park
- Ample parking (5/1000)
- Easy access to freeways
- HVAC in office

CONTACT

Bob Mills
385.988.6477
bob@adventut.com

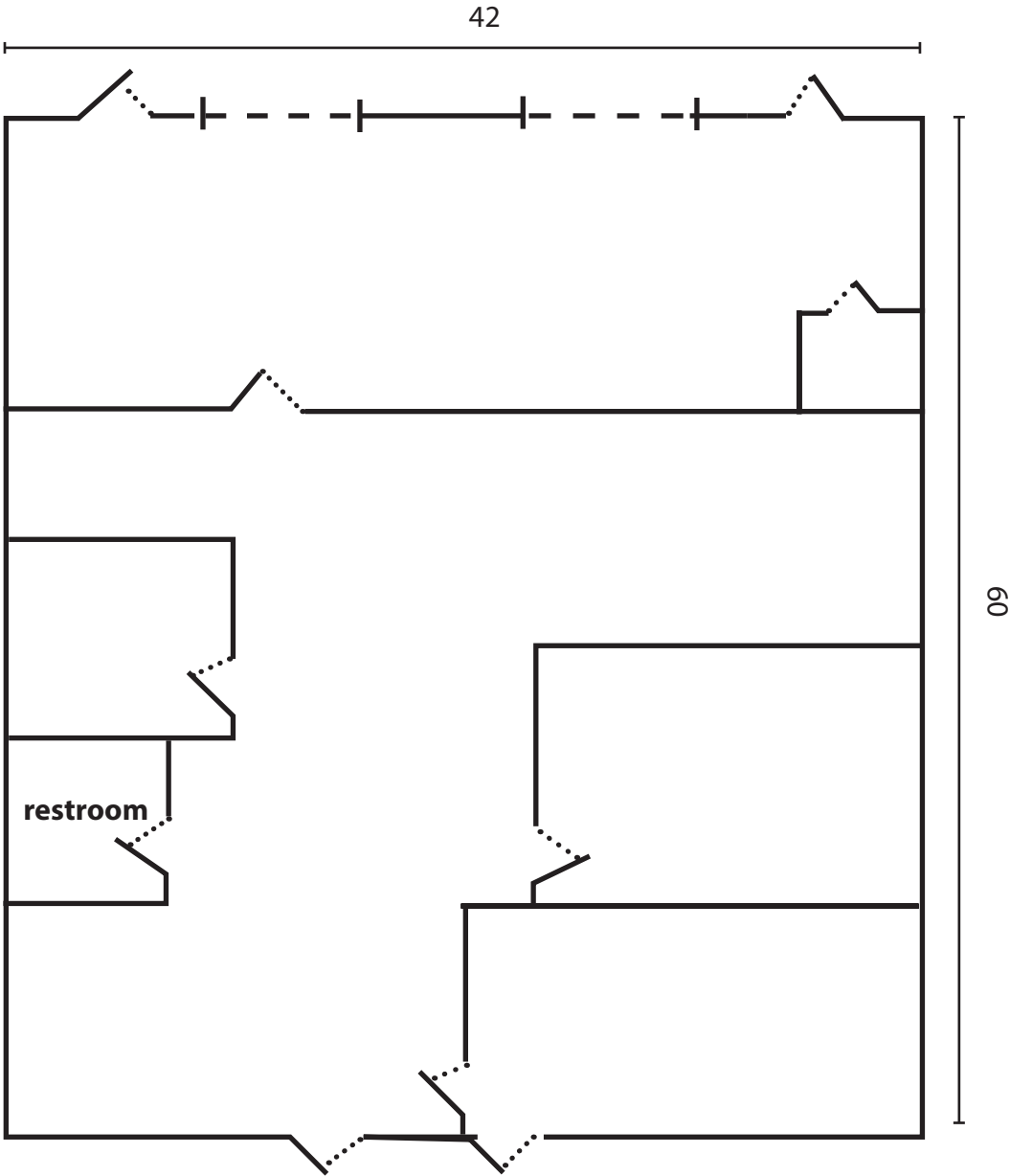
Riley Mills
385.988.6478
riley@adventut.com

This information has been secured from sources Advent believes to be reliable. Advent makes no representations or warranties, expressed or implied, as to the accuracy of the information. Buyer to verify the information and bears all risk for inaccuracies.

ADVENT
PROPERTY  ADVISORS

5284 S. Commerce Dr. #C 274, Murray, Utah 84107 | o:801.433.2480 f:801.290.3172

Floor Plan



This information has been secured from sources Advent believes to be reliable. Advent makes no representations or warranties, expressed or implied, as to the accuracy of the information. Buyer to verify the information and bares all risk for inaccuracies.