

EXCITING MEDICAL OFFICE SPACE IN DOWNTOWN LAGUNA BEACH

AVAILABLE FOR LEASE

265 Laguna Avenue, Laguna Beach – Laguna Professional Building



Exclusively Offered By:

RYAN HARMAN
Senior Vice President
License ID #01399616
949.790.3136
rharman@leeirvine.com

KEVIN BAYLESS
Senior Vice President
License ID #01788899
949.790.3142
kbayless@leeirvine.com

JESSE KNIGHT
Senior Associate
License ID# 0205899
949.790.3103
jknight@leeirvine.com



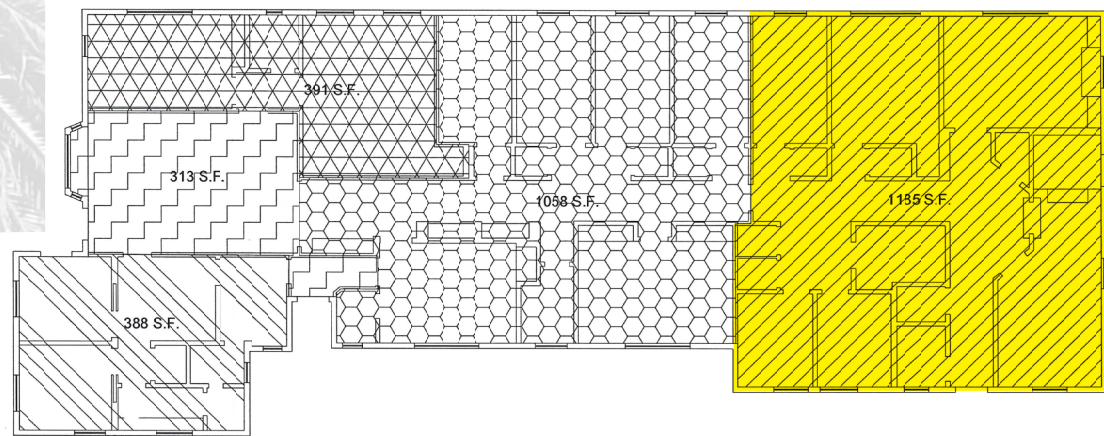
coastalinvestmentsales.com | 949.727.1200

All information furnished regarding property for sale, rental or financing is from sources deemed reliable, but no warranty or representation is made to the accuracy thereof and same is submitted to errors, omissions, change of price, rental or other conditions prior to sale, lease or financing or withdrawal without notice. No liability of any kind is to be imposed on the broker herein.

PROPERTY FEATURES

Currently Available: 1,185 square feet
 Base Rent: \$4.00 per square foot
NNN Expenses: \$0.85 per square foot
 Total Monthly: \$5,747.25 per month

- Waiting Room + 5 private office and abundant storage space
- Downtown Laguna Beach
- Directly Behind Peppertree Lane



Exclusively Offered By:

RYAN HARMAN

Senior Vice President
 License ID #01399616
 949.790.3136
 rharman@leeirvine.com

KEVIN BAYLESS

Senior Vice President
 License ID #01788899
 949.790.3142
 kbayless@leeirvine.com

JESSE KNIGHT

Senior Associate
 License ID# 0205899
 949.790.3103
 jknight@leeirvine.com



coastalinvestmentsales.com | 949.727.1200



Exclusively Offered By:

RYAN HARMAN
Senior Vice President
License ID #01399616
949.790.3136
rharman@leeirvine.com

KEVIN BAYLESS
Senior Vice President
License ID #01788899
949.790.3142
kbayless@leeirvine.com

JESSE KNIGHT
Senior Associate
License ID# 0205899
949.790.3103
jknight@leeirvine.com

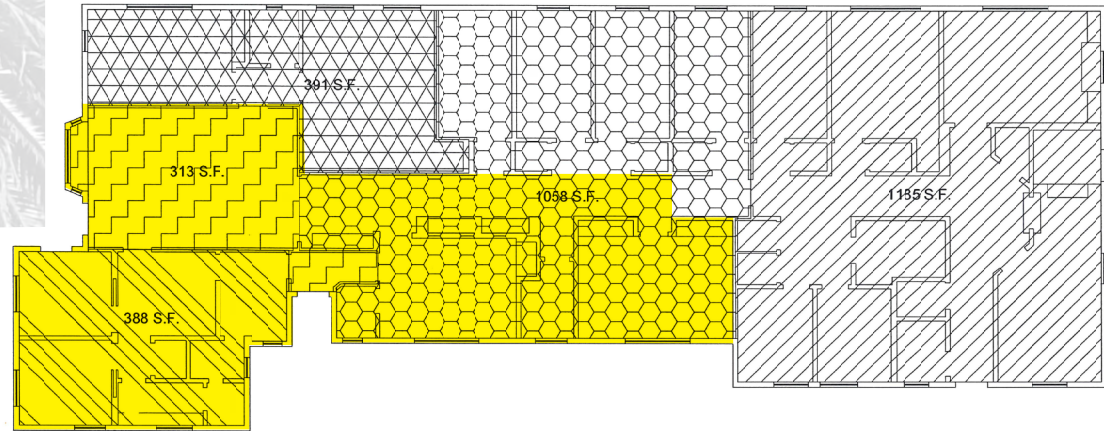


coastalinvestmentsales.com | 949.727.1200

PROPERTY FEATURES

Currently Available: 1,285 square feet
Base Rent: \$4.00 per square foot
NNN Expenses: \$0.85 per square foot
Total Monthly: \$6,232.25 per month

- Waiting Room + 5 private office and abundant storage space
- Downtown Laguna Beach
- Directly Behind Peppertree Lane



Exclusively Offered By:

RYAN HARMAN
Senior Vice President
License ID #01399616
949.790.3136
rharman@leeirvine.com

KEVIN BAYLESS
Senior Vice President
License ID #01788899
949.790.3142
kbayless@leeirvine.com

JESSE KNIGHT
Senior Associate
License ID# 0205899
949.790.3103
jknight@leeirvine.com



coastalinvestmentsales.com | 949.727.1200



Exclusively Offered By:

RYAN HARMAN
Senior Vice President
License ID #01399616
949.790.3136
rharman@leeirvine.com

KEVIN BAYLESS
Senior Vice President
License ID #01788899
949.790.3142
kbayless@leeirvine.com

JESSE KNIGHT
Senior Associate
License ID# 0205899
949.790.3103
jknight@leeirvine.com

LEE & ASSOCIATES
COMMERCIAL REAL ESTATE SERVICES

COASTAL INVESTMENT GROUP

coastalinvestmentsales.com | 949.727.1200



265 LAGUNA AVE
LAGUNA BEACH

FESTIVAL OF
ARTS

LCAD

SAWDUST
FESTIVAL
Artists & Makers

ZINC
CAFE | MARKET | BAR

SOUTH
NICK'S

LB

Ralphs

TOP OF THE WORLD PARK

THURSTON MIDDLE SCHOOL

DOWNTOWN LAGUNA

MAIN
BEACH

WELLS
FARGO

WHOLE
FOODS
MARKET

HOTEL
Laguna

PAVILIONS

CASA LOMA
BEACH HOTEL

Surf & Sand
HOTEL

ALISO CREEK PLAZA

Gelson's

CHASE

STARFISH

CVS
pharmacy

FANTASTIC SAM'S
CUT & COLOR

zpizza

LAGUNA BEACH

Montage
LAGUNA BEACH

Providence
Mission Hospital
Laguna Beach

SOUTH LAGUNA