

# FOR SALE

±0.82 AC PARCEL

2005 WEST 11<sup>TH</sup> AVENUE  
EUGENE, OR 97402



MAX STONE, CCIM  
License #01944151  
858.458.3348  
mstone@voitco.com

In Association with Scott Reid & ParaSell, Inc.  
P: 949.942.6585 | A Licensed Oregon Broker #201233666  
Scott Reid | Broker - ParaSell, Inc.  
broker@parasellinc.com  
949.942.6578 | OR-201231696



# EXECUTIVE SUMMARY

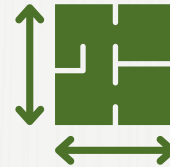
PRICE:.....\$1,800,000  
 PRICE/SF:.....\$50.39/SF  
 LOT SIZE:.....35,719 SF  
 LOT SIZE:.....0.82 AC  
 PARCEL:.....17-04-36-23-01700-000



*\*Ingress/egress on West 11<sup>th</sup> Avenue can be allowed if access & building permits are submitted simultaneously*



**\$1,800,000 (\$50.39/SF)**  
**ASKING PRICE**



Situated on  
±0.82 Acre Lot



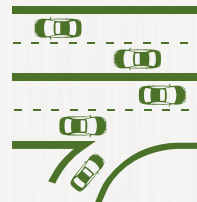
Fee Simple  
Ownership



C-2 Commercial  
Zoning



Hard Corner with  
Signalized Intersection



Prime Corner with  
±35,000 CPD



Less than 3 miles from  
University of Oregon



## DEMOGRAPHICS

	1 MILE	3 MILE	5 MILE
2024 Population	12,605	106,335	209,003
2029 Population Projection	12,580	106,679	209,382
2024 Households	6,014	44,548	87,023
2029 Household Projection	5,997	44,693	87,176
Avg Household Income	\$60,687	\$76,399	\$82,956
Median Household Income	\$44,295	\$51,992	\$60,042
Median Home Value	\$342,312	\$386,378	\$374,678
Median Year Built	1969	1974	1976

## TRAFFIC COUNTS

STREET	CROSS STREET	CARS/DAY
West 11 <sup>th</sup> Avenue	Garfield Street	±35,000
West 11 <sup>th</sup> Avenue	Hayes Street	11,427
Garfield Street	West 9 <sup>th</sup> Place	17,477
West 11 <sup>th</sup> Avenue	Arthur Street	33,046
Garfield Street	West Broadway	14,244
Garfield Street	West 12 <sup>th</sup> Avenue	11,165



# EUGENE OVERVIEW

Located at the southern end of the lush Willamette Valley, Eugene is perfectly positioned for the modern adventurer. A scenic drive east takes residents to the towering Cascade Mountains, west to the stunning Pacific Ocean coastline, or north to the bustling city of Portland. Eugene is a small city with unlimited things to do; from hiking to kayaking to floating the river. Eugene is the ideal place for outdoor recreation.

Downtown Eugene is the vibrant cultural hub of the region; the Oregon Bach Festival and Eugene Symphony call the Hult Center for the Performing Arts home. Additionally, the area hosts a booming food and beverage industry with top-notch craft breweries and wineries.

The Eugene-based University of Oregon is the flagship public university and brings boundless educational, scientific and cultural opportunities – not to mention the renowned Ducks athletic programs.

Eugene’s nationally recognized transit system and gold rating as a “Walk-and-Bicycle-Friendly Community” helps residents fully experience all that the region has to offer. Eugene recently hosted the World Athletics Championships at the historic Hayward Field. Eugene’s title as TrackTown USA extends beyond Hayward Field with miles of trails running through its south hills, along the Willamette River, and through hundreds of acres of city parks.





← INGRESS/EGRESS →

← POSSIBLE INGRESS/EGRESS  
PENDING BUILDING PLAN  
REVIEW →



MAX STONE, CCIM  
 License #01944151  
 858.458.3348  
[mstone@voitco.com](mailto:mstone@voitco.com)

In Association with Scott Reid & ParaSell, Inc.  
 P: 949.942.6585 | IA Licensed Oregon Broker #201233666  
 Scott Reid | Broker - ParaSell, Inc.  
[broker@parasellinc.com](mailto:broker@parasellinc.com)  
 949.942.6578 | OR-201231696

**Voit**  
 REAL ESTATE SERVICES

**RETAIL**  
 PROPERTY  
 GROUP

**PARASELL**  
 INC

4180 La Jolla Village Drive, Suite 100, La Jolla, California 92037 | 858.453.0505 | 858.408.3976 F | Lic #01991785 | [www.voidco.com](http://www.voidco.com)

Licensed as a Real Estate Salespersons by the DRE. The information contained herein has been obtained from sources we deem reliable. While we have no reason to doubt its accuracy, we do not guarantee it. ©2026 Voit Real Estate Services, Inc. All Rights Reserved.