



3333

PERFORMANCE FACILITY AND OFFICE FOR LEASE

 [CLICK HERE](#)

SUSAN ST, COSTA MESA, CA

CBRE

READY, SET, GO!!



**ESTABLISH YOURSELF
AT THIS TWO-FLOOR
CAMPUS LOCATED IN
COSTA MESA**





Address:

3333 Susan Street, Costa Mesa, CA

Layout:

2-story campus

Building RSF:

101,320 RSF

Parking:

101 privately gated stalls with more parking available in the contiguous parking lot

Special Amenity:

160,000 SF of grass fields (Currently used as NFL practice fields)

Sublease Term:

Starting 8/1/2024 through 4/30/2028

Asking Rate:

Negotiable

Furniture:

Negotiable

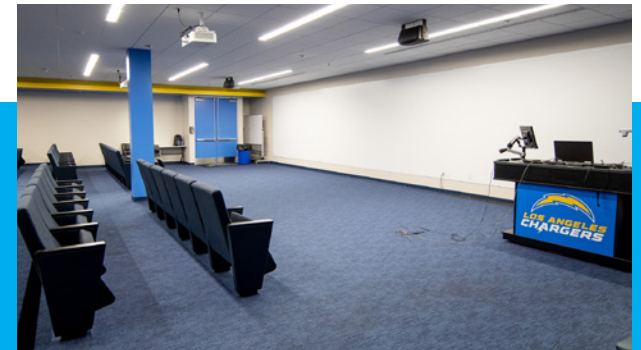
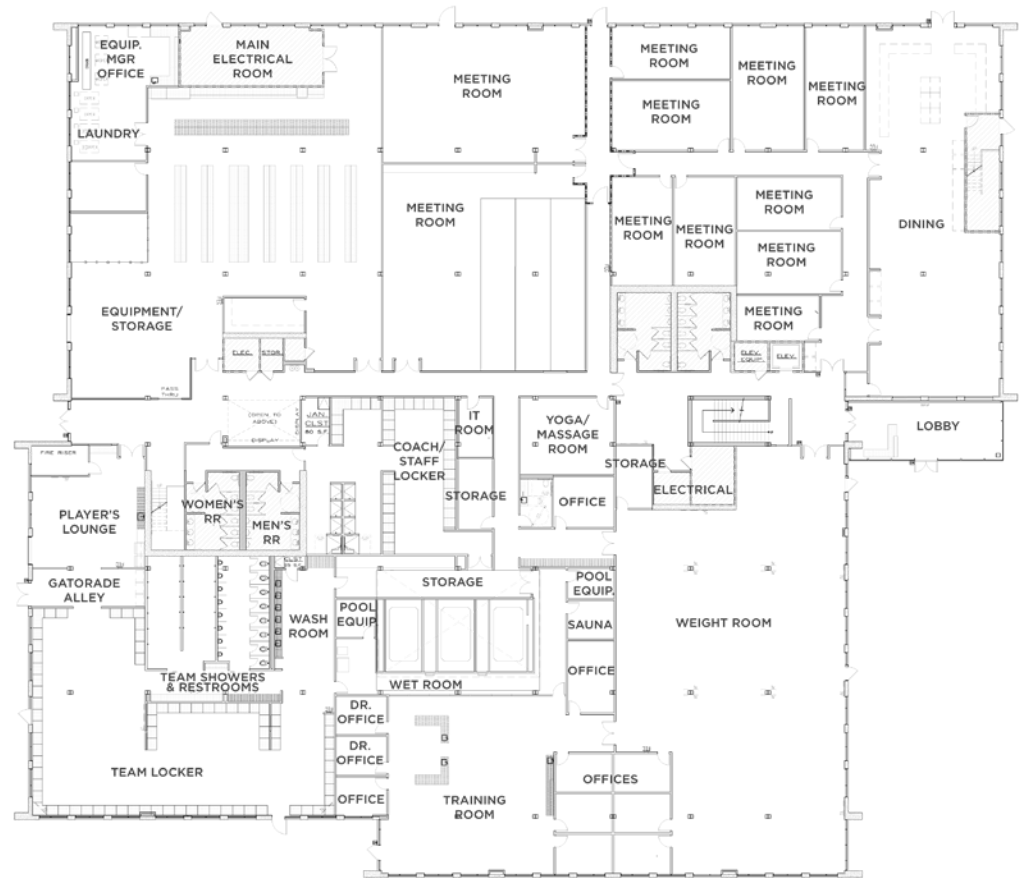


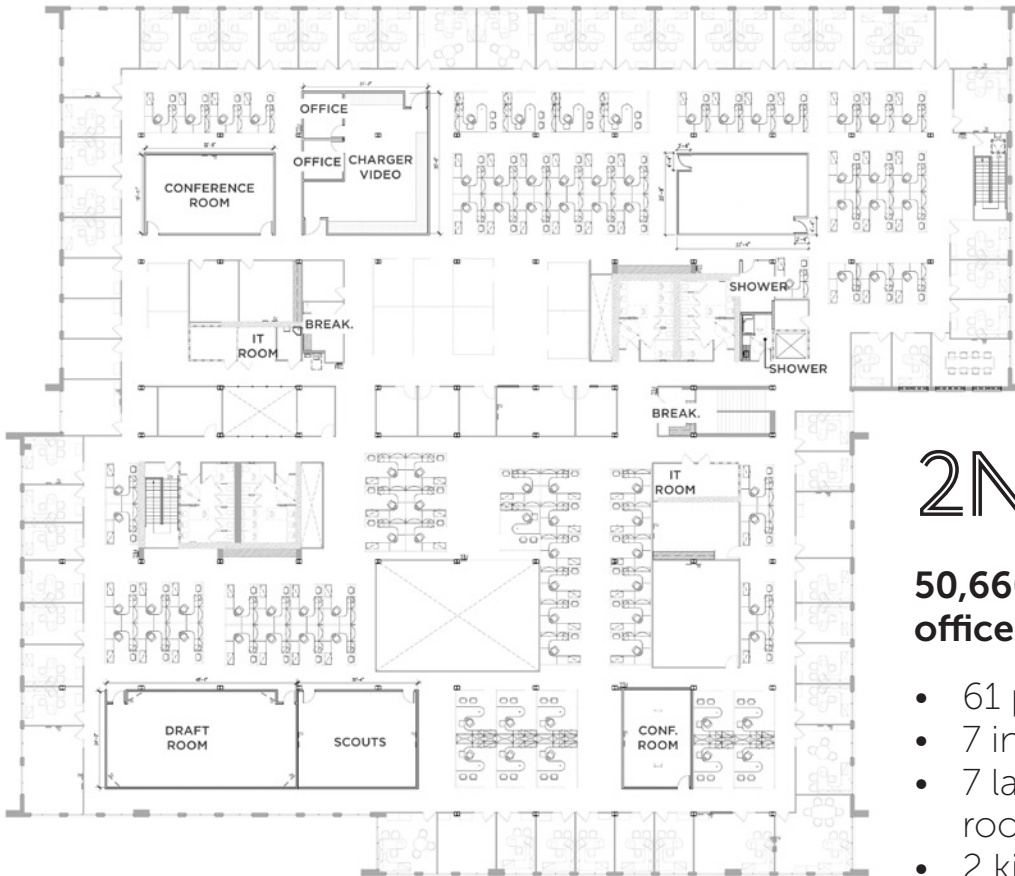


1ST FLOOR

50,660 SF of highly specialized sports use

- meeting rooms
- auditorium
- fitness center
- wet rooms (cold tubs/hot tubs)
- locker rooms
- cafeteria





2ND FLOOR

50,660 SF of improved office space

- 61 perimeter offices
- 7 interior offices
- 7 large conference rooms
- 2 kitchens/
breakrooms



GET CONNECTED WITH COSTA MESA



DESTINATION	DISTANCE
55/73 Freeway	3.0 miles
405 Freeway	0.8 miles
John Wayne-Orange County Airport	4.8 miles
Long Beach Airport	17 miles
Fashion Island	8 miles
SoCo Collection	0.9 miles
South Coast Plaza	2.0 miles
Irvine Spectrum	11.7 miles
Irvine	5 miles
Newport Beach	6 miles
Tustin	7 miles
Anaheim	11 miles
Orange	11 miles
Long Beach	14.5 miles
Laguna Beach	16 miles

FASHION ISLAND
NEWPORT CENTER — NEWPORT BEACH

NEWPORT BEACH
PACIFIC OCEAN

LAGUNA BEACH

3333
SUSAN ST
costa mesa, ca

ANDURIL

The Press.

405

SOCO

AAA
HEADQUARTERS

ORANGE COUNTY
PERFORMING
ARTS CENTER

CENTER CLUB
Orange County
A Member of the ClubCorp Family

COSTA MESA

IBM

VANS

molex
PAYCHEX

The Turnip Rose
Flower & Garden

UnitedHealthcare

CISCO

Robinson Pharma, Inc.

HARBOR BLVD

Marriott
HOTELS • RESORTS • SUITES

SOCO

RESTAURANTS

- ARC Food & Libations
- Birdie Bowl & Juicery
- Bistro Papillote
- Greenleaf Gourmet Chopshop
- Portola Coffee
- Pueblo
- Restaurant Marin
- Savory Spice Shop
- Shuck Oyster Bar
- SoCo Farmers Market
- ST Chocolat
- SusieCakes
- Taco Maria
- Temakira
- The Cheese Shop
- The Iron Press
- The Mixing Glass
- We Olive & Wine Bar





“Costa Mesa offers an urban suburban feel to its community and renowned corporate users just one mile from the Pacific Coast, in the heart of OC.”

It is home to South Coast Plaza, one of the nation’s largest shopping centers, and the Segerstrom Center for the Arts. It offers The Lab and The Lamp, two culture focused retail developments with diverse food options and shopping and the SoCo Collection, an environmentally friendly shopping center. Within 16 square miles, it holds a population of around 11,780, along with 28 parks, two golf courses, 20 public schools, and 3 libraries. Costa Mesa residents get to enjoy surrounding beaches, amusement parks, mountain areas, deserts, and iconic cities.



CONTACT US

Phil Ruhl

First Vice President
Lic. 01968686
+1 213 613 3066
phil.ruhl@cbre.com

John Zanetos

Executive Vice President
Lic. 01346686
+1 213 613 3744
john.zanetos@cbre.com

Ross Bourne

Senior Vice President
Lic. 01436669
+1 949 725 8537
ross.bourne@cbre.com

Allison Schneider Kelly

Senior Vice President
Lic. 01417664
+1 949 725 8474
allison.kelly@cbre.com

Carol Trapani

Senior Vice President
Lic. 01099644
+1 949 725 8603
carol.trapani@cbre.com

© 2022 CBRE, Inc. All rights reserved. This information has been obtained from reliable sources but has not been verified for accuracy or completeness. CBRE, Inc. makes no guarantee, representation, or warranty and accepts no responsibility or liability for the accuracy, completeness, or reliability of the information contained herein. You should conduct a careful, independent investigation of the property and verify all information. Any reliance on this information is solely at your own risk. CBRE and the CBRE logo are service marks of CBRE, Inc. All other marks displayed on this document are the property of their respective owners, and the use of such marks does not imply any affiliation with or endorsement of CBRE. Photos herein are the property of their respective owners. Use of these images without the express written consent of the owner is prohibited.

CBRE