



Single Offices For Lease

840 Delaware Street Lawrence, Kansas

Located in the thriving East Lawrence
Warehouse Arts District.

This property is located at the intersection of 9th Street and Delaware Street. The individual office spaces feature a common kitchen with refrigerator, dishwasher, and seating area. The building also includes a reception area for clients or guests. The site offers ample parking and is within walking distance to Bon Bon, Lawrence Beer Company, and The Cider Gallery, to name a few.

J. Taylor

Senior Vice President
+1 785 766 9484
j.taylor@colliers.com

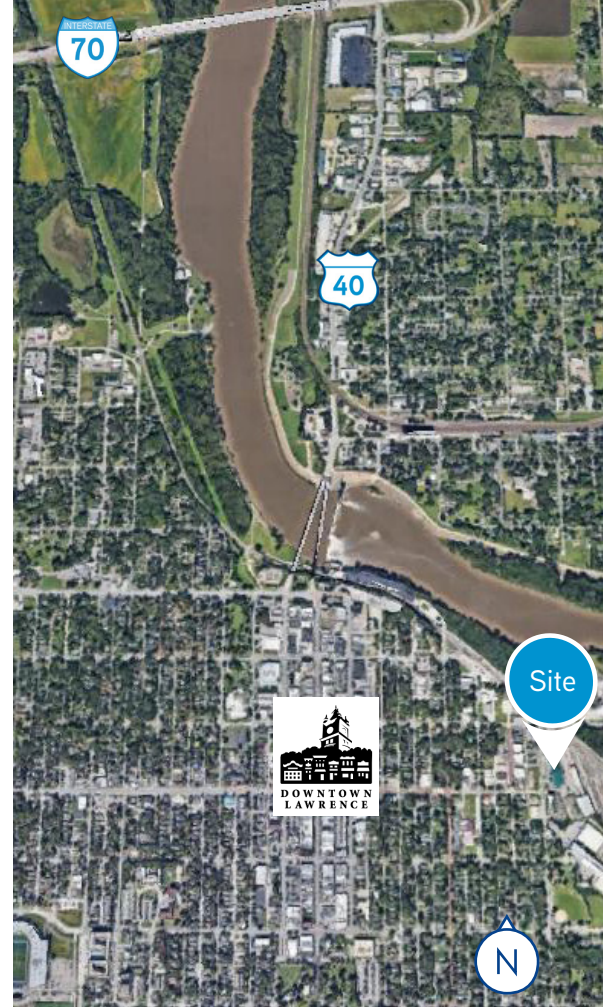
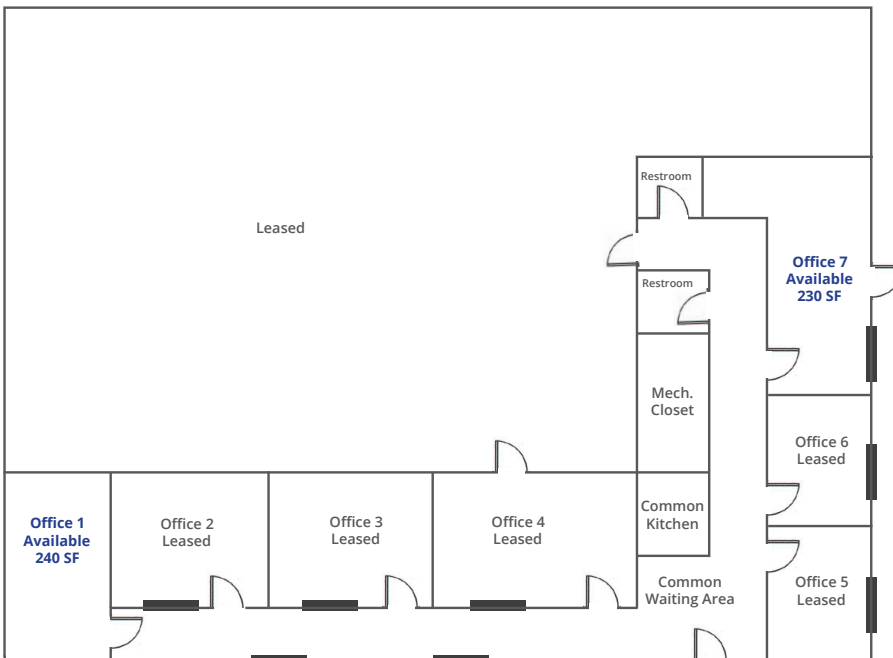
3705 Clinton Parkway, Ste 201
Lawrence, KS 66047
+1 785 865 5100
colliers.com/lawrence

For Lease

Single Offices

Address:	840 Delaware Street, Lawrence, KS
Year built/renovated:	1993/2008
Zoning:	IL-UC
Office 1:	240 SF \$750/month, full service
Office 7:	230 SF \$750/month, full service

Floor Plan



Contact us:



J. Taylor
Senior Vice President
+1 785 766 9484
j.taylor@colliers.com

Colliers
3705 Clinton Parkway, Ste 201
Lawrence, KS 66047
+1 785 865 3562
colliers.com/lawrence