

128

CLINTON STREET

BETWEEN DELANCEY & BROOME STREETS
LOWER EAST SIDE



128

CLINTON STREET
BETWEEN DELANCEY & BROOME STREETS
LOWER EAST SIDE

SIZE: 1,900 SF

FRONTAGE: 50'

POSSESSION: Immediate

ASKING RENT: Upon Request

TRANSPORTATION: **F M J Z**

HIGHLIGHTS:

- Previously *Hilltop Bike Shop*
- At the base of a luxury condo building
- Across from Vital climbing gym
- Located within Essex Crossing with over 1,000 new residential units and 350,000 SF of office space
- Situated in the heart of the Lower East Side amongst dense residential, dynamic F&B, and ten setting retailers

NEIGHBORS:



TRADER JOE'S

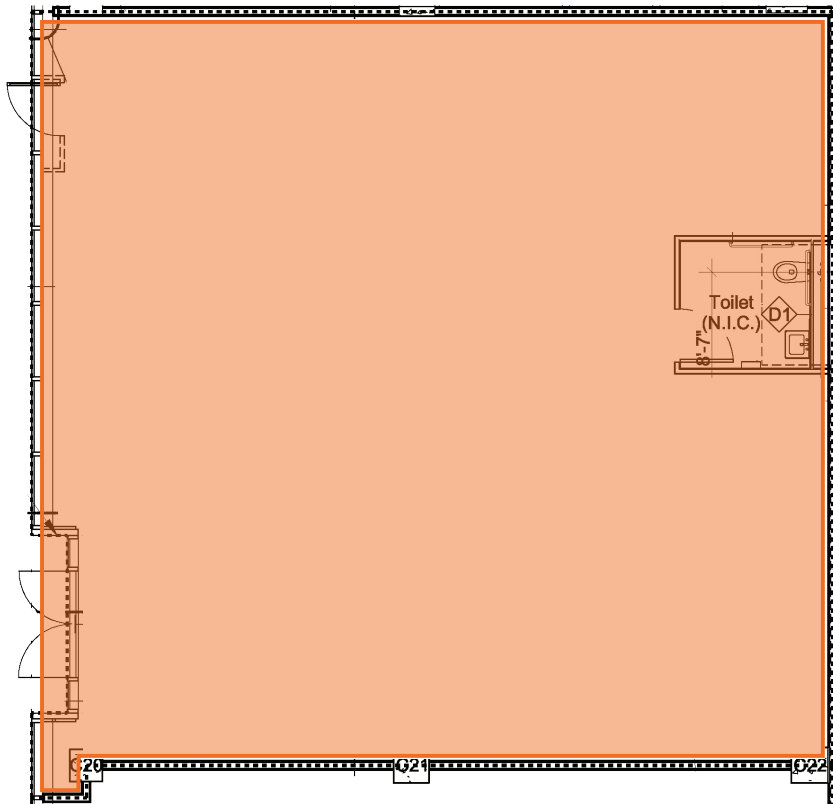


128

CLINTON STREET

FLOOR PLANS:

GROUND FLOOR - 1,900 SF



INTERIOR:



128

CLINTON STREET
BETWEEN DELANCEY & BROOME STREETS
LOWER EAST SIDE

FOR MORE INFORMATION,
PLEASE CONTACT:

MAYER GHONOJA

212.548.3945 | MG@ksrny.com

BARRY FISHBACH

917.273.6752 | Fishbach@ksrny.com

