



# Office For Sublease

## **Michael Gelfman, SIOR**

Executive Vice President  
+1 952 897 7875  
michael.gelfman@colliers.com

## **Nathan Karrick**

Vice President  
+1 952 897 7722  
nathan.karrick@colliers.com

---

1600 Utica Avenue South, Suite 300  
St. Louis Park, MN 55416  
P: +1 952 897 7700  
colliers.com

## 1650 W 82nd Street Bloomington, MN

### Office Space for Sublease at Southpoint Tower

- > Fully furnished, move-in ready opportunity
- > 17,294 RSF Available
- > High end finishes with amazing views
- > Covered ramp parking available
- > Newly renovated building amenities including fitness center, conference facilities and outdoor space
- > Easy accessibility to 35W and I-494
- > Restaurants and shopping within walking distance

Copyright © 2024 Colliers International. Information herein has been obtained from sources deemed reliable, however its accuracy cannot be guaranteed. The user is required to conduct their own due diligence and verification.

# For Lease

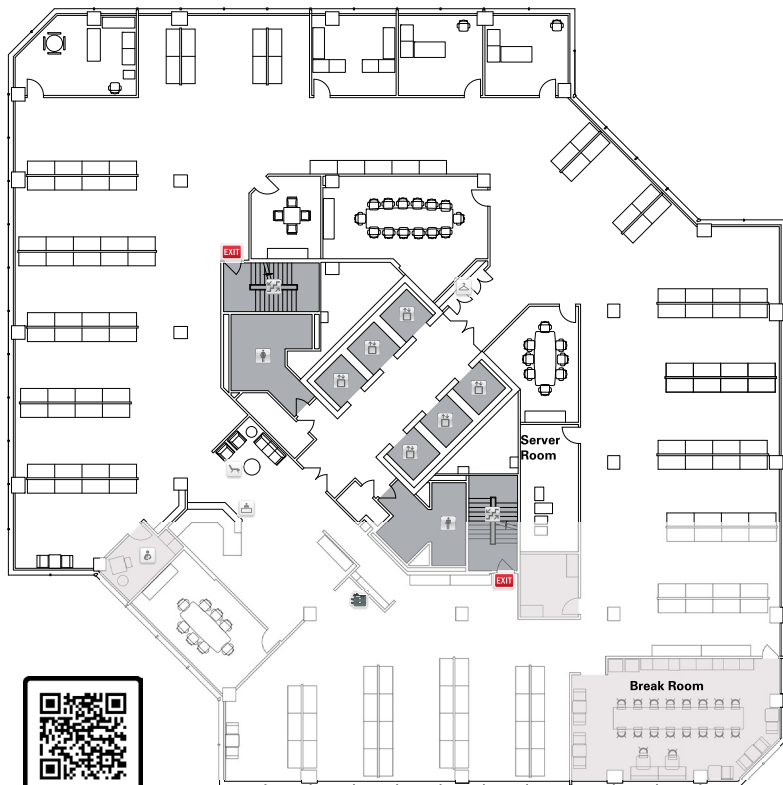
## Property Highlights

Civic Address:	1650 W 82nd Street Bloomington, MN
Currently Available:	17,294 RSF
Sublease Term:	4/1/2025 - 8/31/2026 *additional term available with Landlord
Parking:	Covered surface
Rental Rates:	<b>\$9.50 PSF Gross</b>
Available Suites:	Suite 900: 17,294 SF



## Floor Plan

Suite 900 | 17,294 RSF



SCAN ME

View 3D Tour

### Contact us:

#### Michael Gelfman, SIOR

Executive Vice President  
+1 952 897 7875  
michael.gelfman@colliers.com

#### Nathan Karrick

Vice President  
+1 952 897 7722  
nathan.karrick@colliers.com

#### Colliers

1600 Utica Avenue South, Suite 300  
St. Louis Park, MN 55416  
P: +1 952 897 7700