

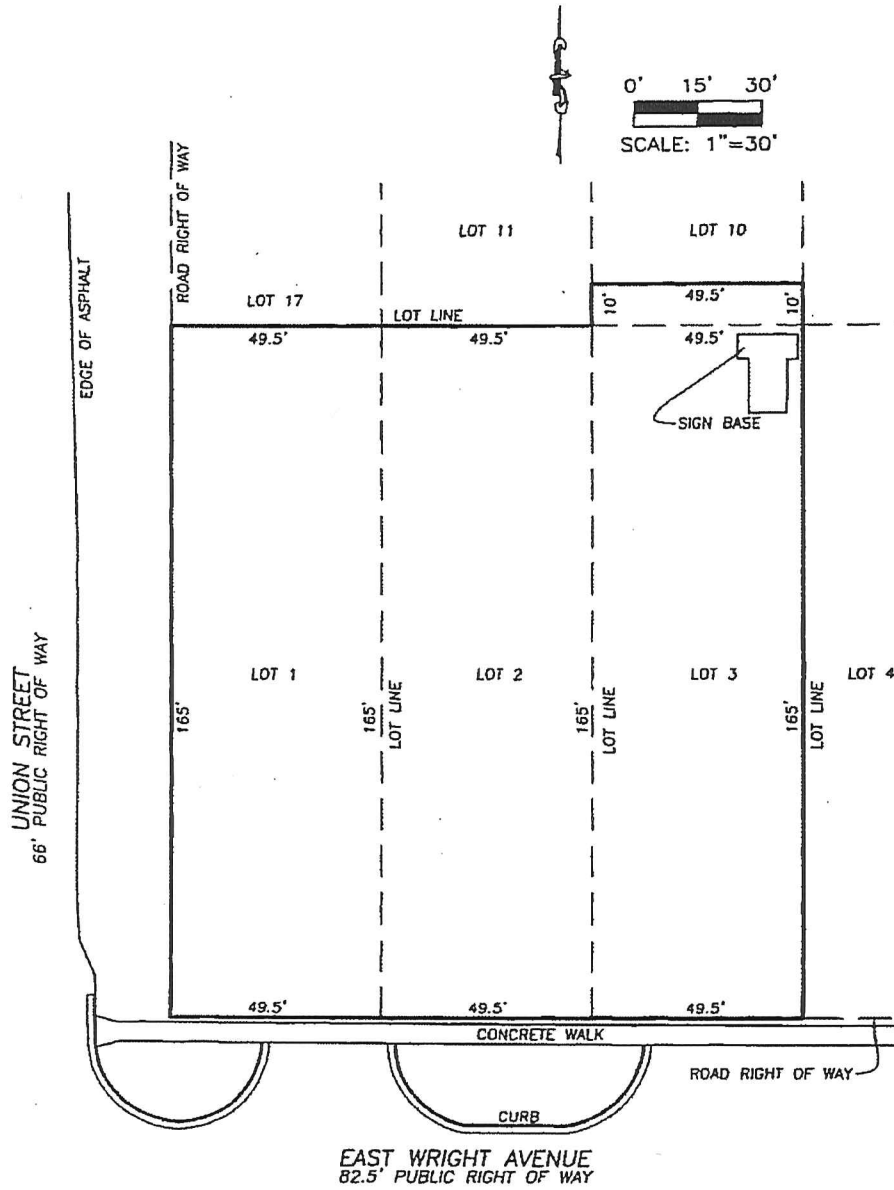
PREPARED FOR:
ARCADIS US, INC.

RESTRICTIVE COVENANT DIAGRAM

SITE #7033
305 EAST WRIGHT AVENUE
SHEPHERD, MICHIGAN

LEGAL DESCRIPTION:

A parcel of land in the Village of Shepherd, known as Lots 1, 2, 3 and the South 10 feet of Lot 10, in Block 2 of Millers Addition to Salt River as recorded in Liber 3 of Plats, Page 342, Isabella County Records.



GEODETIC DESIGNS INCORPORATED
 2300 N. GRAND RIVER AVE.
 LANSING, MI 48906
 PHONE: (517) 908-0008
 FAX: (517) 908-0009
 www.geodeticdesigns.com



REVISION DATE:	
FIELD: -	DRAWN BY: djv
DATE: 7 MAY 2014	
FILE: S125-2014	
SHEET 1 OF 1	