

BEVERLY HILLS TRIANGLE

MEDICAL / OFFICE SPACE FOR LEASE

9701 WILSHIRE BLVD, BEVERLY HILLS, CA 90212



Jeffrey E. Resnick

310.922.1717

jresnick@cagre.com

Lic. 00405333

Adam Funk

310.666.0124

afunk@cagre.com

Lic. 02129715



SPACE INFORMATION



These materials are based on information and research provided by others, which we believe are accurate. No guarantee, warranty or representation is made by Commercial Asset Group, Inc. or its personnel. All interested parties must independently verify accuracy. All projections, assumptions, opinion, or estimates are used for example only and do not represent the current or future performance of the identified property. Your tax, financial, legal and toxic substance advisors should conduct a careful investigation of the property and its suitability for your needs, including land use limitations. The property is subject to prior lease, sale, change in price, or withdrawal from the market without notice.

RENTAL RATE

SUITE 600
(OFFICE: \$5.75/RSF/MO)
(MEDICAL: \$6.50/RSF/MO)

SPACE SIZE

±3,707 SF

TERM

NEGOTIABLE

AVAILABILITY

IMMEDIATELY

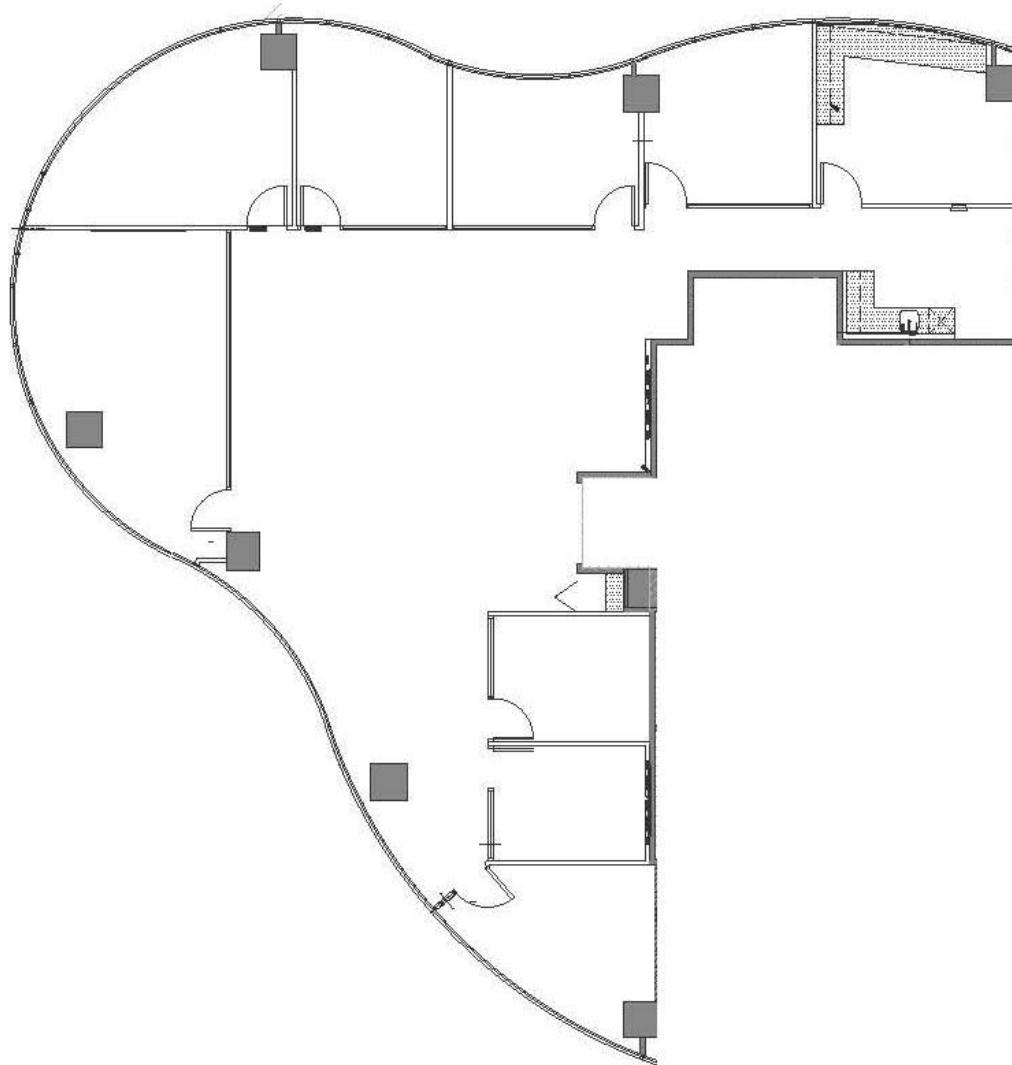
PARKING

2.5/1,000 SF LEASED
\$220/MONTH RESERVED
\$165/MONTH UNRESERVED VISITOR
PARKING MIN: \$2.50/HOUR MAX:
\$20/DAY

SUITE 600 FLOORPLAN



±3,707 SF



NEARBY AMENITIES

THE
GOLDEN
TRIANGLE

9701

WILSHIRE BLVD

SANTA MONICA BLVD

WILSHIRE BLVD

CRUSTACEAN



Neiman Marcus

THE PENINSULA
BEVERLY HILLS

Saks Fifth Avenue

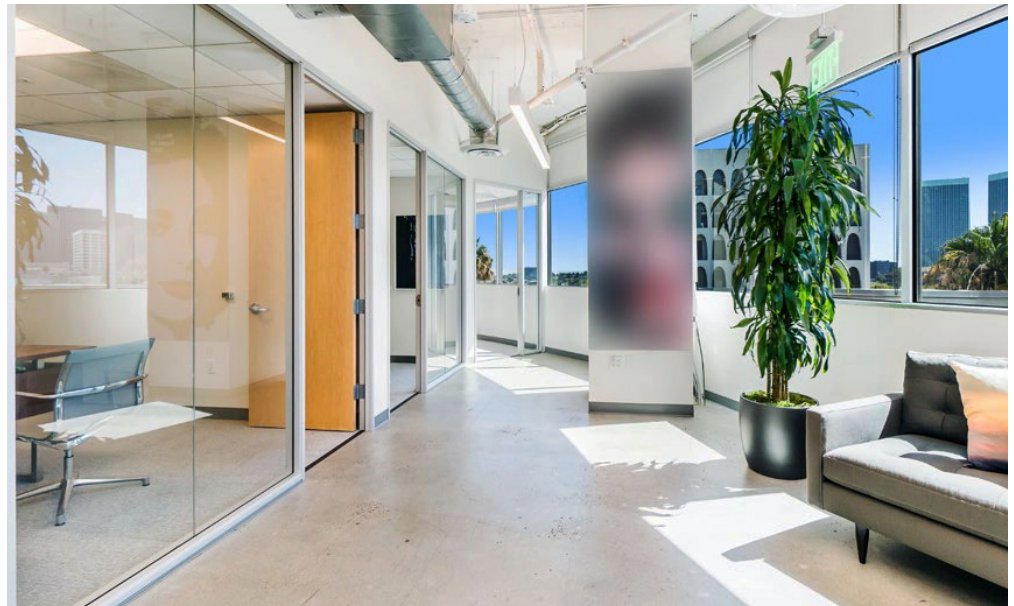
Spago
Beverly Hills

Beverly Hills
teuscher
Chocolates of Switzerland

W
WALDORF ASTORIA
BEVERLY HILLS

9701 WILSHIRE BLVD, BEVERLY HILLS, CA 90212

SUITE 600 PHOTOS



9701 WILSHIRE BLVD, BEVERLY HILLS, CA 90212



Jeffrey E. Resnick

310.922.1717
jresnick@cagre.com
Lic. 00405333

Adam Funk

310.666.0124
afunk@cagre.com
Lic. 02129715

Commercial Asset Group

1801 Century Park East, Ste 1550
Los Angeles, CA 90067
P 310.275.8222 F 310.275.8223
www.cagre.com Lic. 01876070



**COMMERCIAL
ASSET GROUP**