



1800  
WEST LOOP SOUTH





# 1800 WEST LOOP SOUTH



New building social hub, conference facility and fitness center



Upgraded lobby and common areas with Class A high-end finishes



Class-A, LEED® Gold Certified



Fooda and Food Truck Wednesday's



Institutional ownership and On-site property management/engineering staff



Garage Parking with direct access to building



Adjacent to the newly renovated Marriott, under new ownership with 16,000 SF of conference facilities and onsite restaurant



5 Star hotel and restaurants located at The Post Oak within walking distance



On-site security 24 hours a day, 7 days a week



Monument signage with West Loop visibility



Great access & visibility - conveniently located close to the West Loop, Galleria, and Greenway submarkets







## WALKABLE AMENITIES

- |   |  |   |  |   |  |
|---|--|---|--|---|--|
| 1 |  | 2 |  | 3 |  |
| 4 |  |   |  |   |  |
| 5 |  |   |  | 6 |  |
| 7 |  |   |  | 8 |  |
|   |  |   |  |   |  |

**3**  
MINUTES  
DRIVE TO

**374**  
STORES

**137**  
RESTAURANTS

**56**  
HOTELS

# AVAILABILITIES

Suite 2150 (Spec Suite) **2,132 SF**  
Suite 2115 (Spec Suite) **3,261 SF**

Suite 1990 **1,988 SF**

Suite 1700 (Avail 9/1/22) **5,706 SF**  
Suite 1650 **2,687 SF**  
Suite 1695 **2,171 SF**

Suite 1400 **21,693 SF**

Suite 1375 (Spec Suite) **1,981 SF**

Suite 1220 (Avail 7/1/22) **2,754 SF**  
Suite 1275 **1,281 SF**  
Suite 1210 (Avail 7/1/22) **1,467 SF**

Suite 950 (Avail 7/1/22) **7,576 SF**

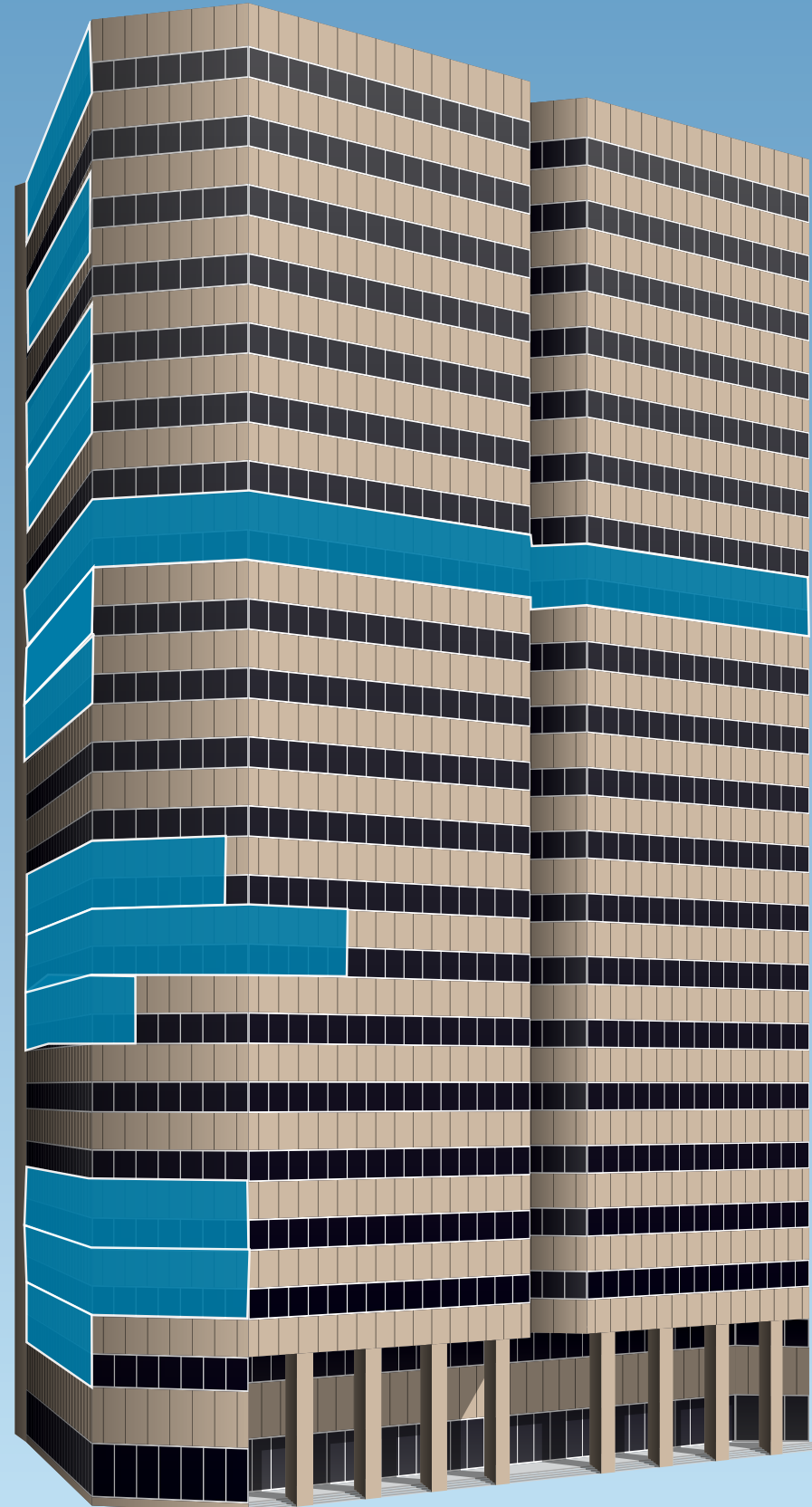
Suite 850 (Avail 7/1/22) **9,802 SF**

Suite 725 **2,662 SF**

Suite 475 **3,909 SF**

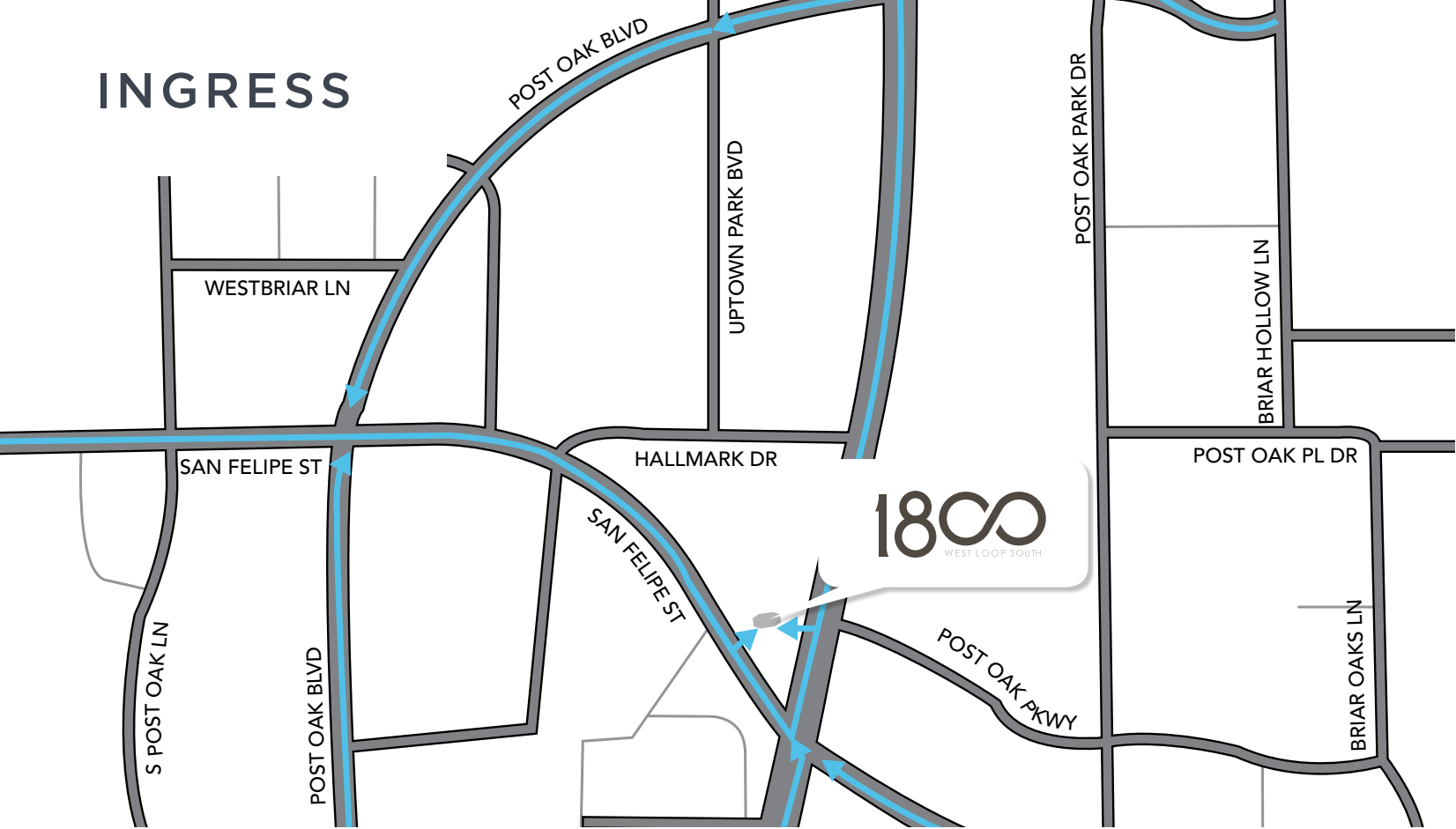
Suite 350 **1,410 SF**  
Suite 345 **1,166 SF**

Suite 275 **1,206 SF**



**DIRECT ACCESS**  
INTO THE BUILDING ON  
LEVEL 1, LEVEL 3, LEVEL 6 AND LEVEL 7  
VIA PARKING GARAGE

## INGRESS



## EGRESS



**MAKING  
ACCESSIBILITY  
A LIFESTYLE**





# NEXT LEVEL RENOVATIONS

**GRAB N' GO MARKET**, featuring healthy snacks, drinks, and convenience meals

**FOODA**, serving up local favorites 3x per week

**LARGE OPEN SERVERY AND (COLD) BREW BAR**, for tenant events and daily stop-ins

**WI-FI CAFE**, with booth seating and abundant natural light

**RESERVABLE LOUNGE**, with click-share technology and comfy seating

**LARGE MEETING SPACE**, seats 32

**FITNESS CENTER**, with lockers and showers

**PRIVATE STUDIO ROOM**, with Fitness OnDemand

CONTACT OUR LEASING TEAM TODAY

DOUG LITTLE  
713.272.1284  
doug.little@transwestern.com

LOUANN PEREIRA  
713.272.1267  
louann.pereira@transwestern.com

MATTHEW SELIGER  
713.231.1583  
matthew.selig@transwestern.com



PACIFIC OAK  
Keppel Pacific Oak US REIT

TRANSWESTERN REAL ESTATE SERVICES

1800WESTLOOPSOUTH.COM