

BUILD TO SUIT

MEDICAL OFFICE



14555 C HAZEL DELL PKWY, CARMEL, IN 46033



PLUM CREEK || BUILD TO SUIT

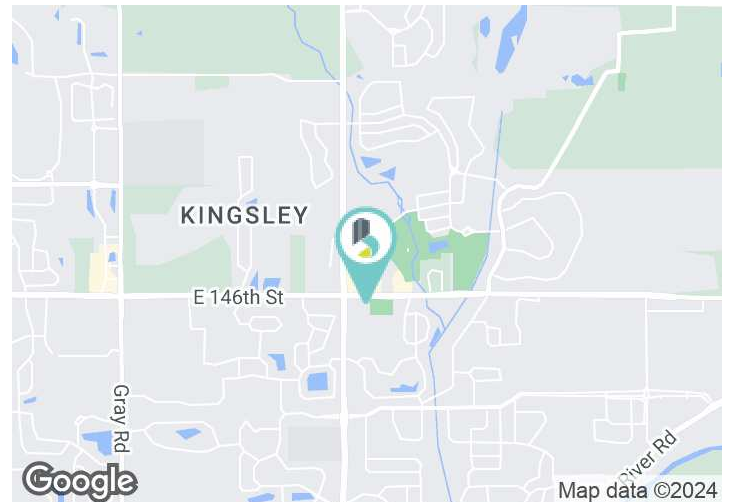


PROPERTY HIGHLIGHTS

- Class A medical office / general office
- Convenient curbside parking
- Excellent access from 146th Street & Hazel Dell Parkway

OFFERING SUMMARY

Sale Price:	Subject to Offer
Lease Rate:	TBD
Available SF:	Up to 10,125 SF



**BRADLEY COMPANY**  
 310 E. 96th St., Suite 100  
 Indianapolis, IN 46240  
 317.663.6000

**TOM OSBORNE, SIOR**  
 Principal  
 317.258.0179  
 tosborne@bradleyco.com

**KIM HARTMAN, CPM**  
 Senior Vice President  
 317.716.5895  
 khartman@bradleyco.com



BRADLEYCO.COM



14555 C HAZEL DELL PKWY, CARMEL, IN 46033

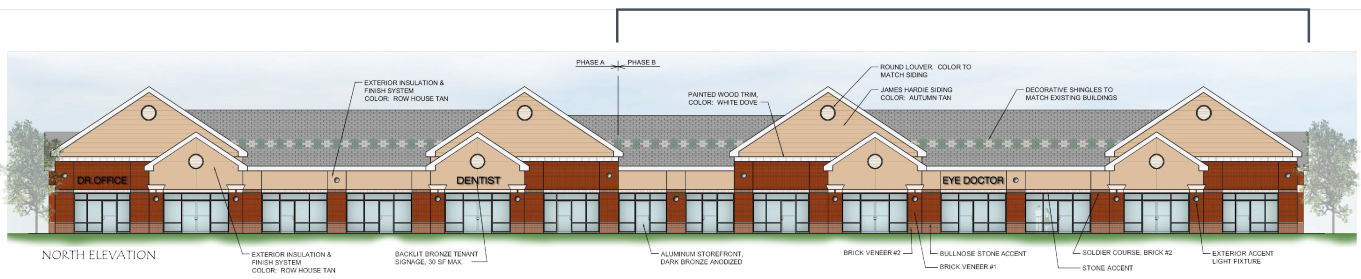
BUILD TO SUIT

MEDICAL OFFICE



Existing Building

## NEW CONSTRUCTION



### Proposed New Building

**TOM OSBORNE, SIOR**  
Principal  
317.258.0179  
tosborne@bradleyco.com

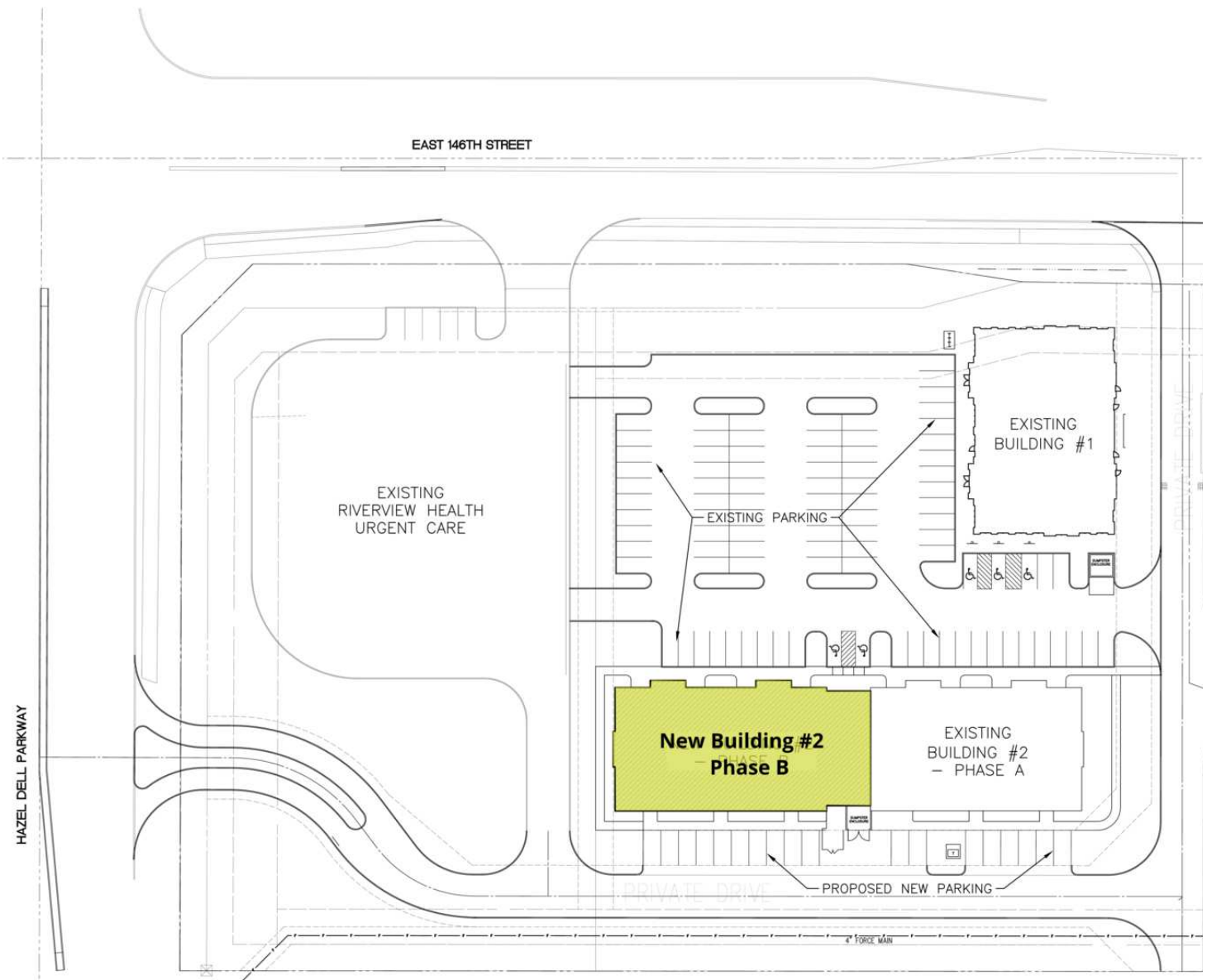
**KIM HARTMAN, CPM**  
Senior Vice President  
317.716.5895  
khartman@bradleyco.com



14555 C HAZEL DELL PKWY, CARMEL, IN 46033

BUILD TO SUIT

MEDICAL OFFICE



**TOM OSBORNE, SIOR**  
 Principal  
 317.258.0179  
 to Osborne@bradleyco.com

**KIM HARTMAN, CPM**  
 Senior Vice President  
 317.716.5895  
 khartman@bradleyco.com