

For Lease

# 6618 26TH CT E FLEX SPACE AVAILABLE

6618 26th Court East, Sarasota, FL 34243



## OFFERING SUMMARY

Lease Rate:	\$18.00 SF/yr (MG)
Building Size:	13,140 SF
Available SF:	2,250 SF
Lot Size:	0.78 Acres
Year Built:	2006
Zoning:	HM-HEAVY MANUFACTURING

## PROPERTY OVERVIEW

Introducing a prime leasing opportunity at 6618 26th Court East, Sarasota, FL, 34243. This property offers a Reception area as well as two air-conditioned offices and two bathrooms. The Warehouse is 54 1/2 by 24 1/2 and the Overhead door, 14 foot high by 12 foot wide. Location offers high visibility in a high traffic area. Contact us and let us show you the possibilities this property has for you and your flourishing business.

## PROPERTY HIGHLIGHTS

- High Visibility
- Ample Parking
- High Traffic Area

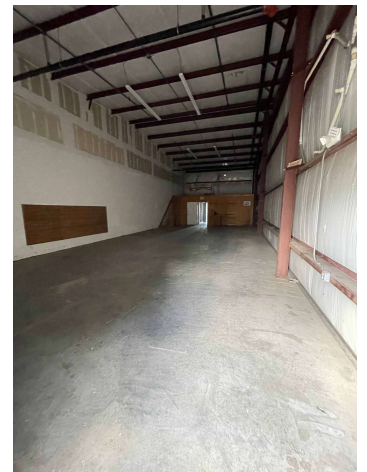
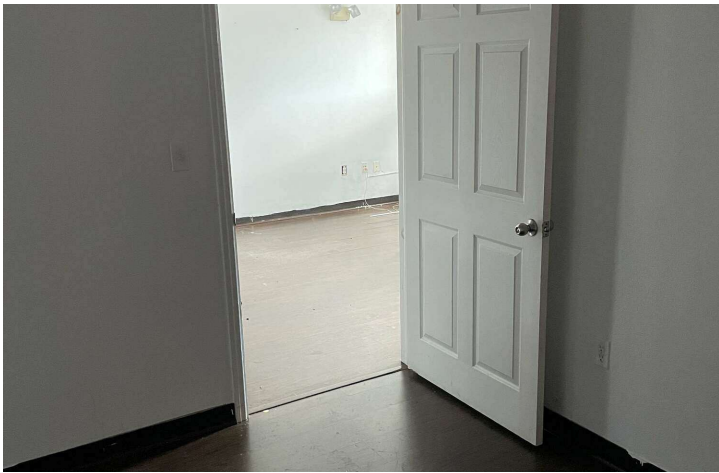
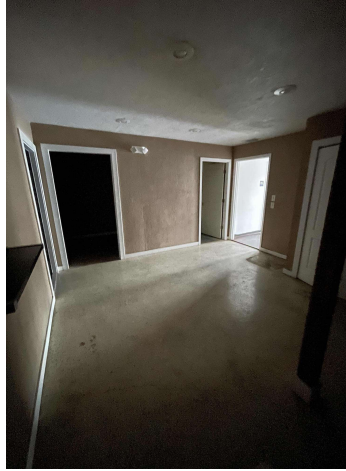
JOE C. HEMBREE, CCIM    MICHAEL HOLLANDER  
941.951.1776                      941.404.9850  
jchembree@hembreeco.com    Michael@hembreeco.com



For Lease

# 6618 26TH CT E FLEX SPACE AVAILABLE

6618 26th Court East, Sarasota, FL 34243



JOE C. HEMBREE, CCIM  
941.951.1776  
jchembree@hembreeco.com

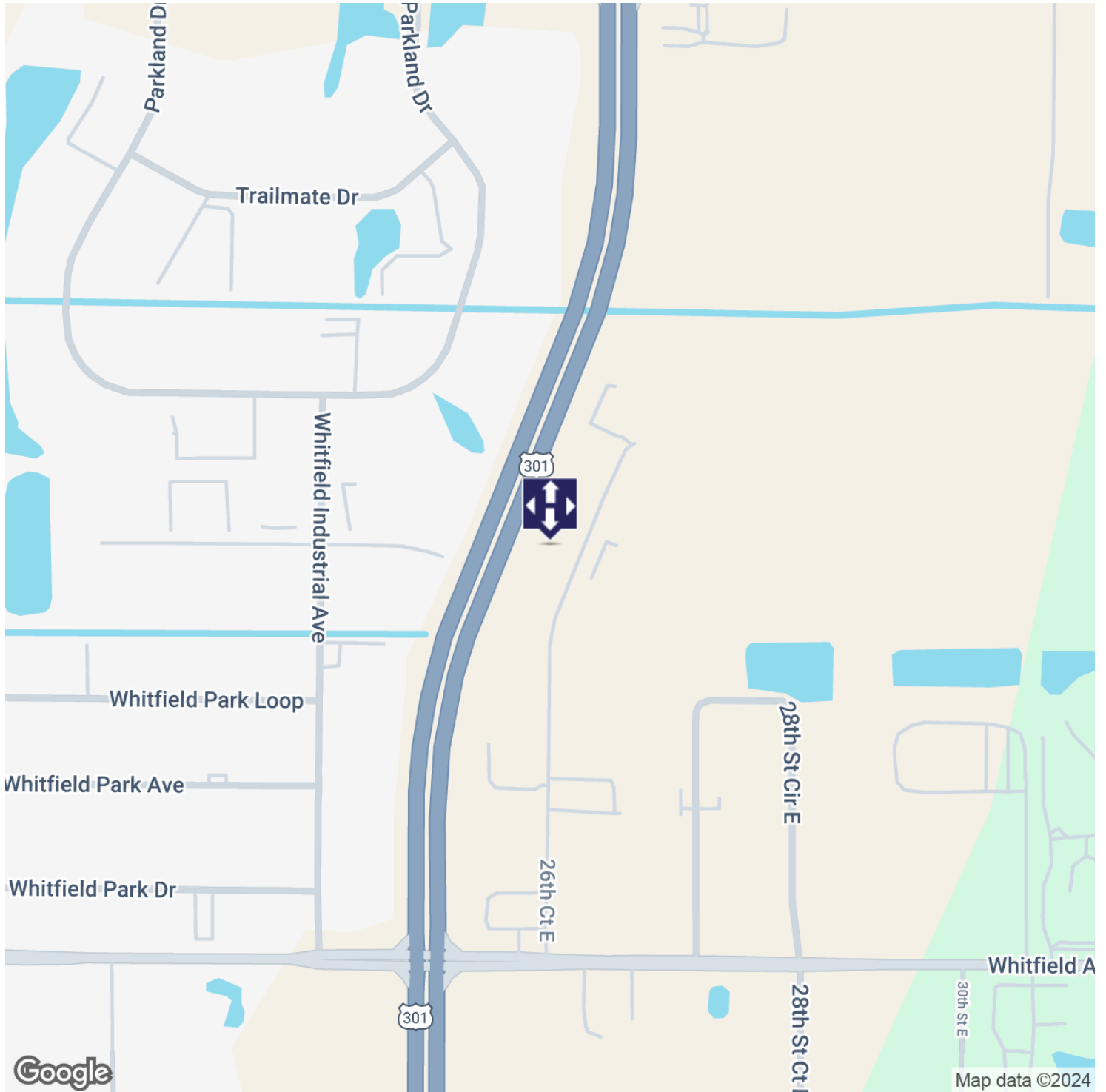
MICHAEL HOLLANDER  
941.404.9850  
Michael@hembreeco.com



For Lease

# 6618 26TH CT E FLEX SPACE AVAILABLE

6618 26th Court East, Sarasota, FL 34243



JOE C. HEMBREE, CCIM  
941.951.1776  
jchembree@hembreeco.com

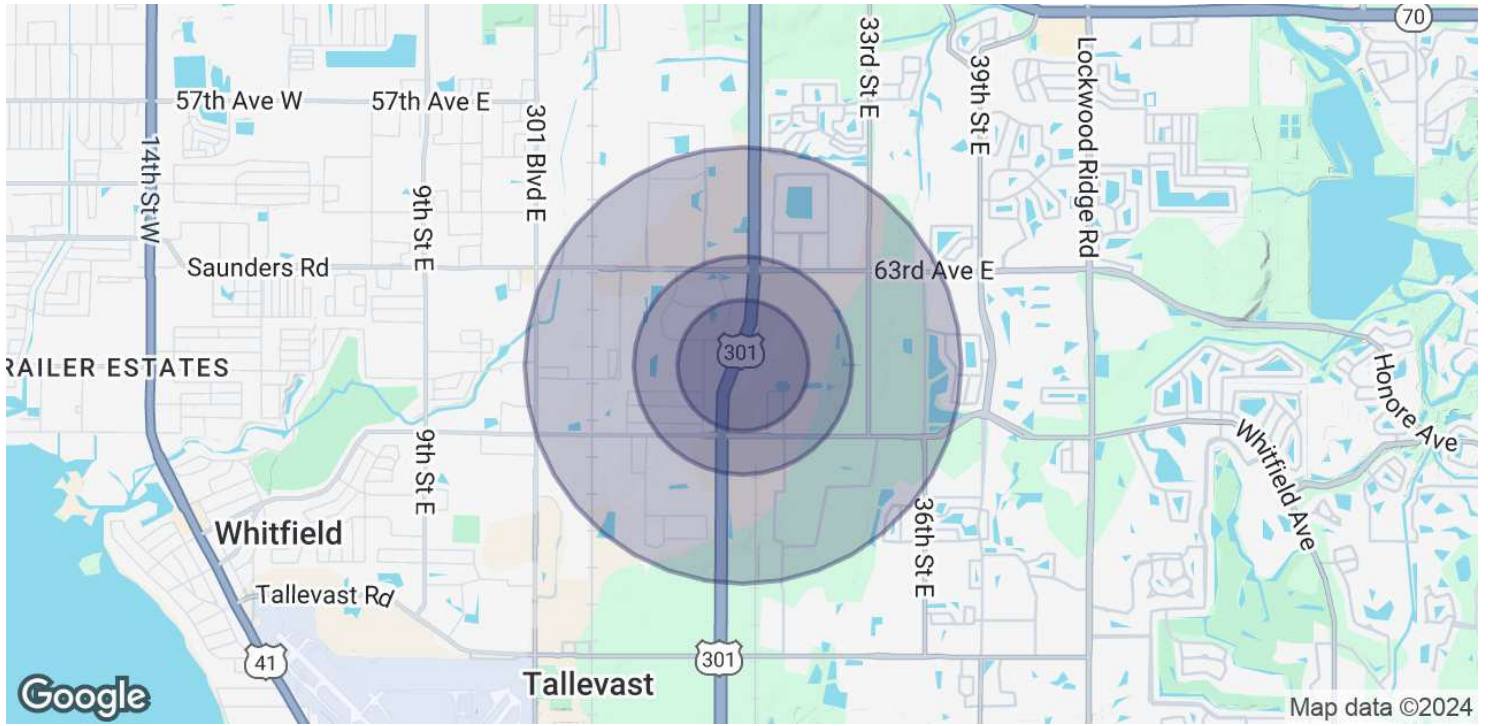
MICHAEL HOLLANDER  
941.404.9850  
Michael@hembreeco.com



For Lease

# 6618 26TH CT E FLEX SPACE AVAILABLE

6618 26th Court East, Sarasota, FL 34243



POPULATION	0.3 MILES	0.5 MILES	1 MILE
Total Population	6	155	2,401
Average Age	41	41	47
Average Age (Male)	40	40	46
Average Age (Female)	42	42	47

HOUSEHOLDS & INCOME	0.3 MILES	0.5 MILES	1 MILE
Total Households	3	47	1,003
# of Persons per HH	2	3.3	2.4
Average HH Income	\$72,414	\$78,266	\$76,775
Average House Value	\$324,728	\$329,987	\$328,677

Demographics data derived from AlphaMap

JOE C. HEMBREE, CCIM    MICHAEL HOLLANDER  
941.951.1776                    941.404.9850  
jchembree@hembreeco.com    Michael@hembreeco.com

