



OFFICE FOR SALE

SPRING ROSE OFFICE CONDOMINIUMS
18920-18944 KUYKENDAHL RD, SPRING
7,185 SF OF OFFICE/MEDICAL SPACE AVAILABLE

PARK HIGHLIGHTS

- Six buildings within Spring Rose with 8 units each for sale.
- One mile west of SH-249
- Located in a professional office park setting
- Average traffic of over 12,000 Vehicles per day on North Eldridge Parkway & over 25,000 Vehicles per day on Spring Cypress

SPACE FACTS

- SPACE 1st Fl
- NO. OF UNITS 8
- SIZE 595 - 1,202 SF
- TERM Negotiable
- SPACE USE Office/Medical
- CONDITION New
- AVAILABLE Now

CONTACT ADDY
for pricing info & move-in incentives



Adaline Werthwein
(713)303-ADDY (2339)
addyw@remax.net

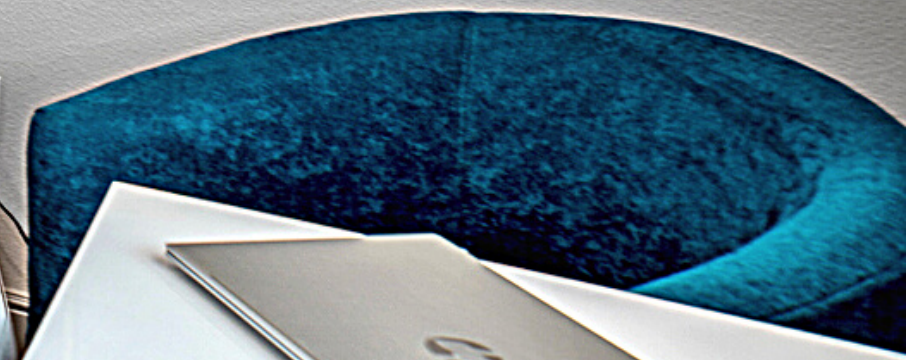


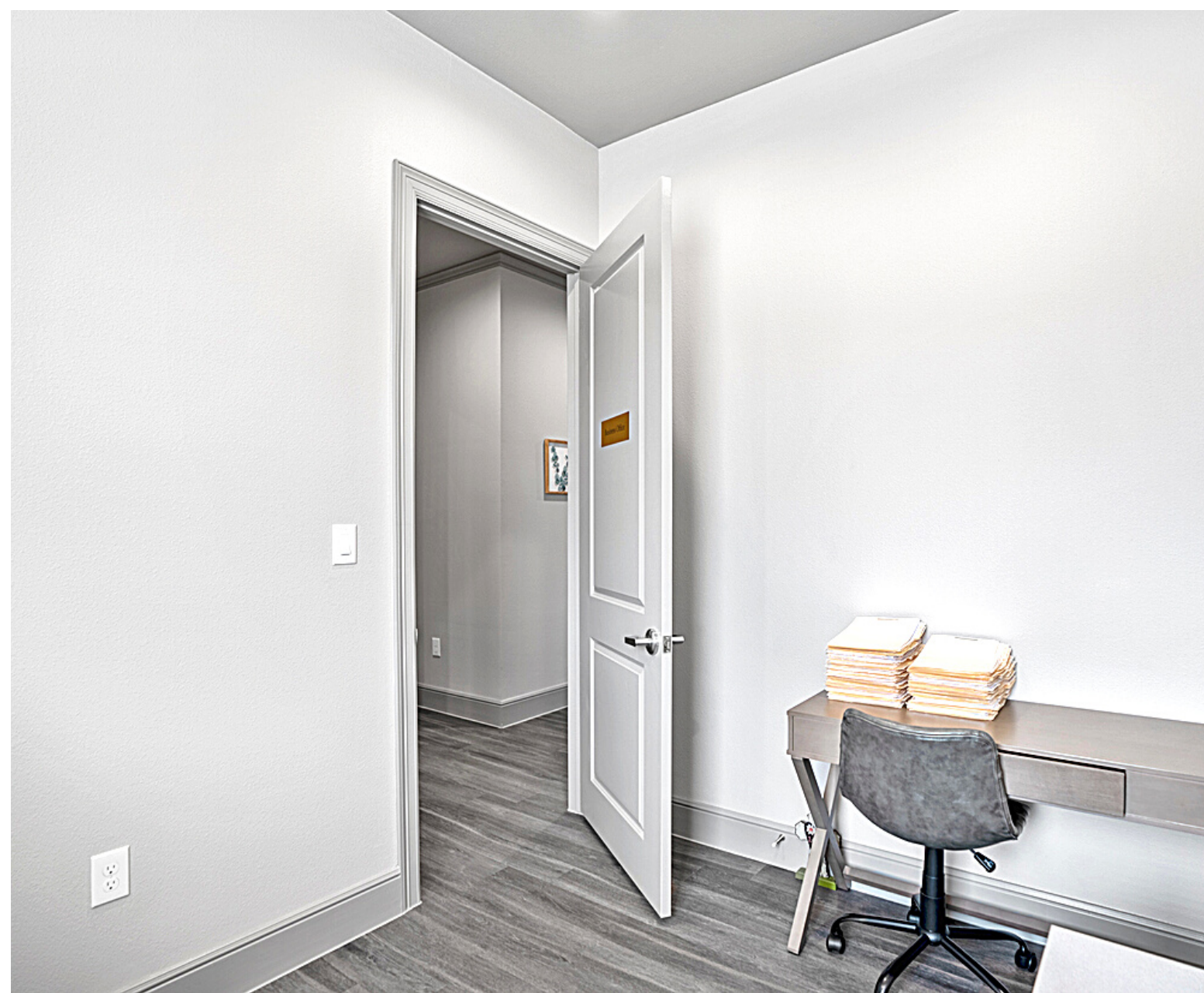






Addy
WERTHWEIN TEAM
MAKING REAL ESTATE DREAMS COME TRUE







— THE OFFICES OF —
SPRING ROSE
 An ADCS, L.P. Development

EXHIBIT B



Countrypines Drive



Overall Site Plan
 For illustration purposes only
 Updated 6-17-2022

www.the-offices.com


 SPRING ROSE
 OFFICE CONDOMINIUMS


 WERTHWEIN TEAM
 713-303-2339


 SPRING ROSE
 OFFICE CONDOMINIUMS

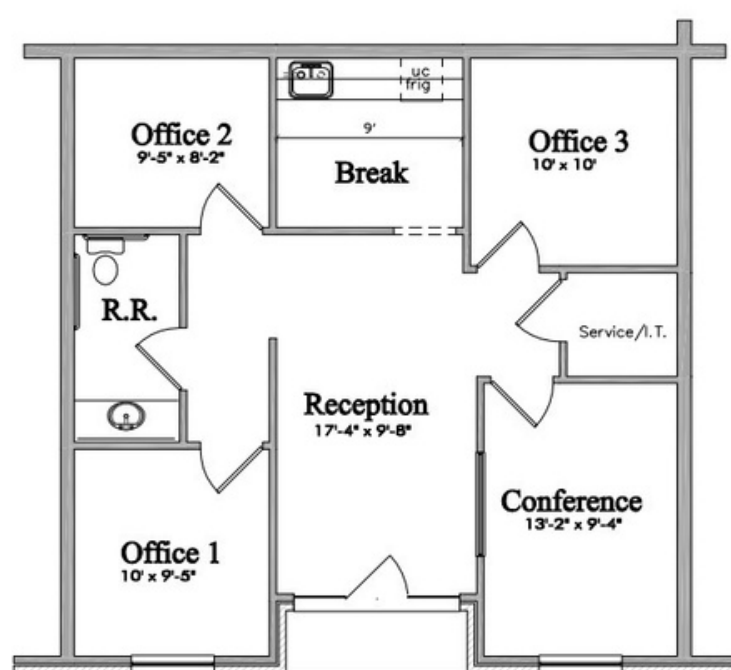

 WERTHWEIN TEAM
 713-303-2339


 SPRING ROSE
 OFFICE CONDOMINIUMS

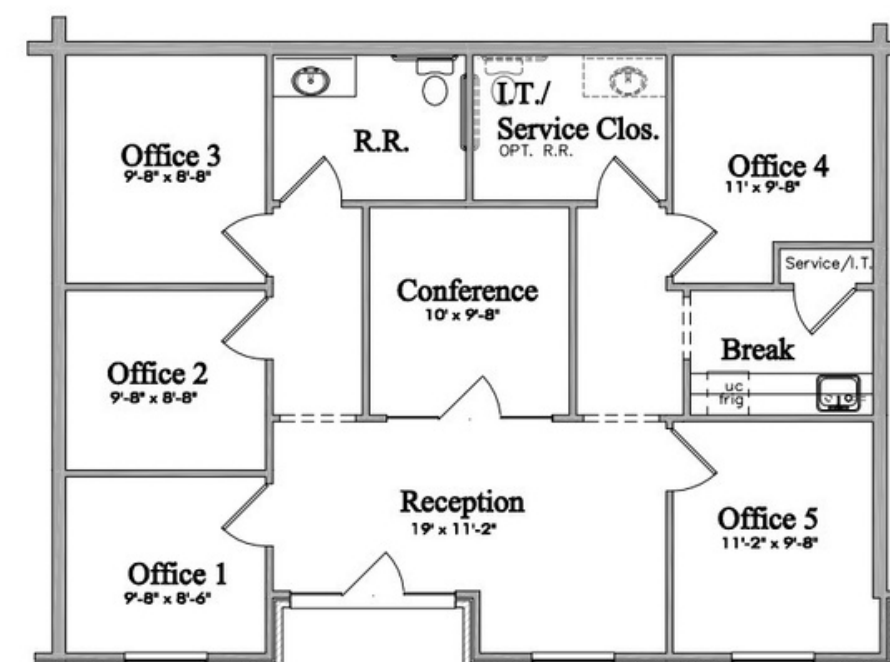

 WERTHWEIN TEAM
 713-303-2339



Unit Type 1
 609 s/f corner
 595 s/f interior



Unit type 2
 904 s/f corner
 891 s/f interior



Unit type 3
 1202 s/f corner
 1188 s/f interior

**CONTACT ADDY
FOR PRICING INFO & MOVE-IN
INCENTIVES**



Adaline Werthwein

(713)303-ADDY (2339)

addyw@remax.net

