

CHARRINGTON SQUARE SHOPPING CENTER

9912 E. Grand River Avenue / Brighton, MI



MID-AMERICA[®]
Real Estate-Michigan, Inc.

100% LEASED



RETAIL OPPORTUNITY

CHARRINGTON SQUARE SHOPPING CENTER



Address

9912 E. Grand River Avenue
Brighton, MI 48116

Features

Shadow anchored by a newly remodeled and expanded Kroger Marketplace. The center is located on the pad at the hard southeast corner of Grand River Avenue and Borderline Drive at a traffic-controlled entrance. There are multiple points of ingress and egress along with monument signage available.

Availability

0 SF

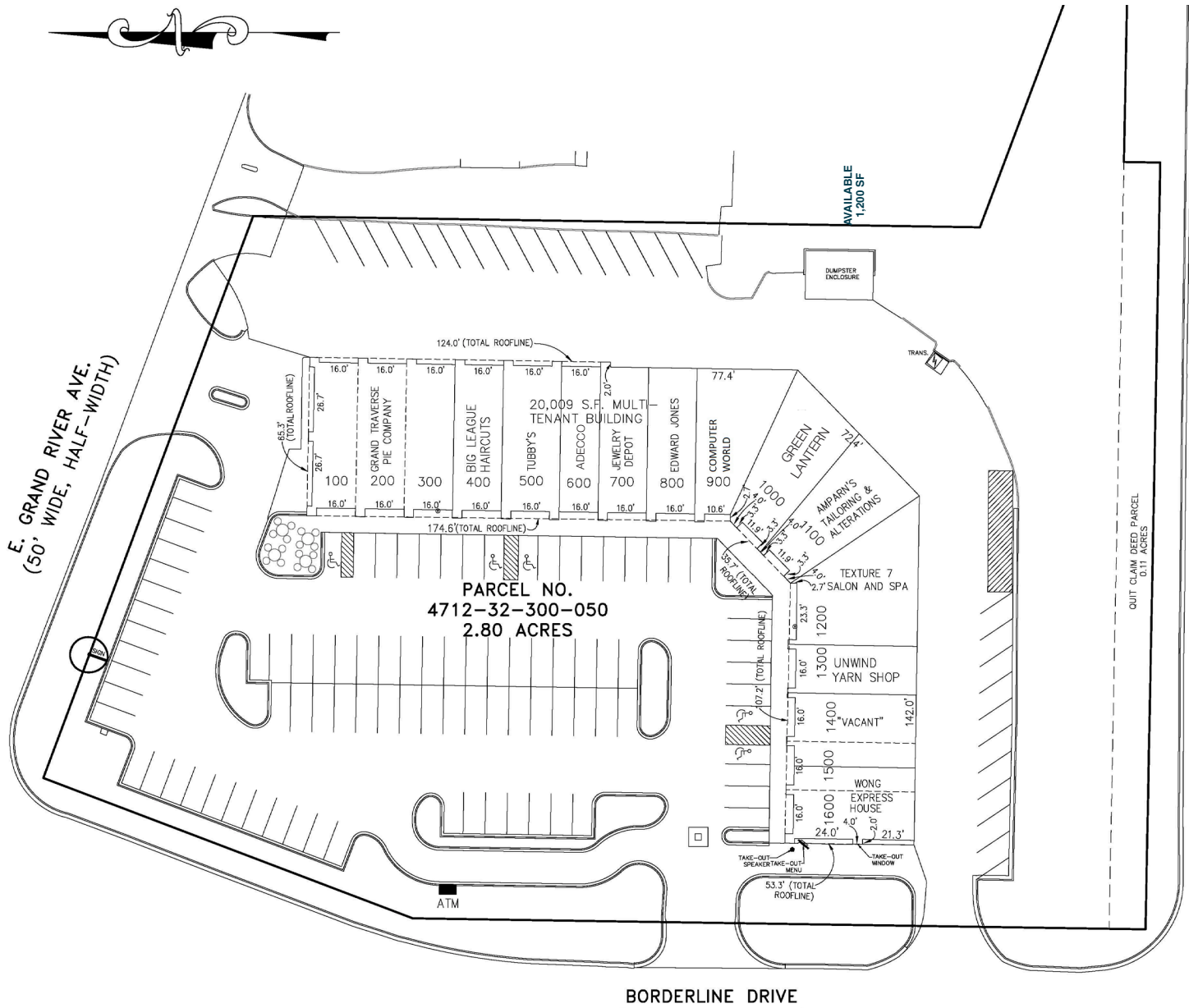
Area Tenants



Demographics (2024)

	1 MILE	3 MILES	5 MILES
POPULATION	4,706	25,238	51,328
HOUSEHOLDS	2,195	10,673	20,609
AVG HOUSEHOLD INCOME	\$94,237	\$144,250	\$151,434
DAYTIME POPULATION	7,056	30,174	55,097

CHARRINGTON SQUARE SHOPPING CENTER



CHARRINGTON SQUARE SHOPPING CENTER



MOOZ TEAV1 MO1

Google, Acce

Google; Accessed 04/16/2024

CHARRINGTON SQUARE SHOPPING CENTER



HIGH LEVEL ZOOM

CHARRINGTON SQUARE SHOPPING CENTER



Eric
Unatin

Mid-America Real Estate -
Michigan, Inc.
T: 248.855.6800
EUnatin@MidAmericaGrp.com



38500 Woodward Ave, Suite 100
Bloomfield Hills, Michigan 48304
248.855.6800
MidAmericaGrp.com

CONTACT