

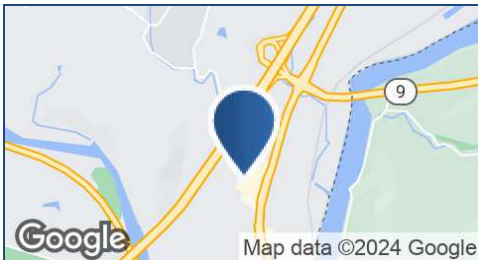
Property Summary



DAILY TRAFFIC CONDITIONS

TRAFFIC COUNT	DAILY TRAFFIC
COUNT	15,230
STREET	Putney Rd.
COUNT 2	24,540
STREET 2	I-91

* Figures shown represent estimates



DEMOGRAPHICS - 2024

DEMOGRAPHICS	3 MILE	5 MILE	10 MILE
Estimated Population	9,848	14,304	29,996
Average HH Income	\$87,772	\$93,028	\$98,019
Estimated Households	4,890	6,847	13,380

PROPERTY HIGHLIGHTS

- Lease Term Available Through: 1/31/2029
- Available Immediately
- Pylon Signage Available
- Approximate Dimensions of 260' x 230'
- Co-Tenants: Hannaford, Walgreens, and Citizens Bank
- Ample Parking: 4.8/ 1,000 Ratio

KEITH VALENTINE

678.718.1882

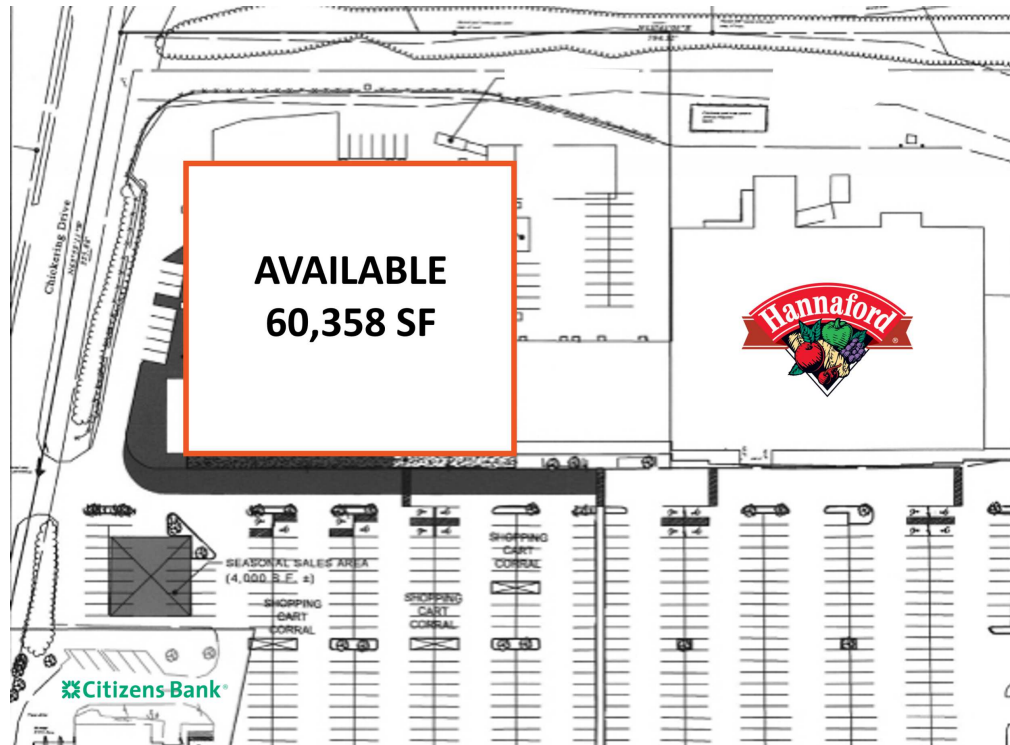
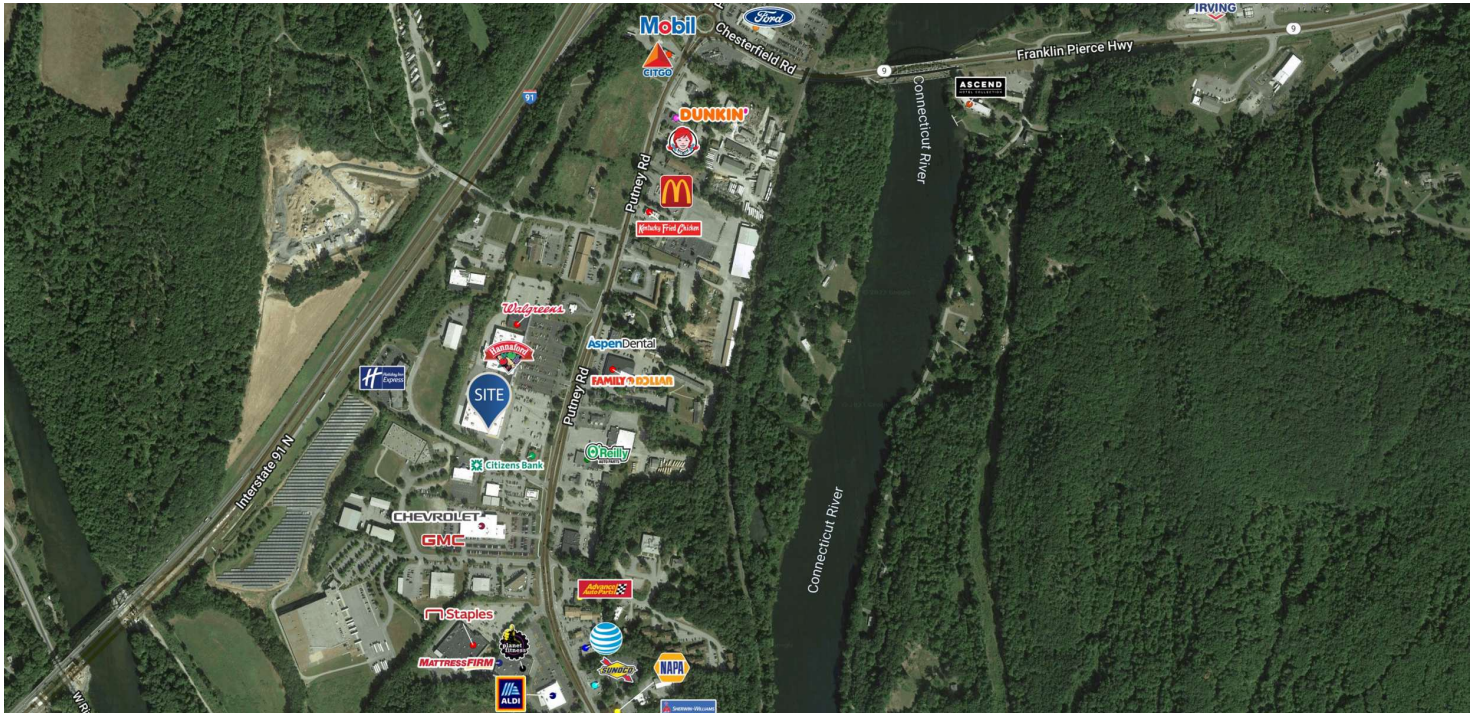
KValentine@retail-pa.com

PAT PALADINO

617.772.7266

pat.paladino@nrmk.com

Location Maps



KEITH VALENTINE

678.718.1882

KValentine@retail-pa.com

PAT PALADINO

617.772.7266

pat.paladino@nmrk.com

Retail Property Advisors // 678.718.1880 // 2100 RiverEdge Pkwy. // Suite 1050, Atlanta, GA 30328 // Retail-PA.com

ATLANTA // TAMPA // PASADENA, CA // AUBURN // SARASOTA // BALTIMORE

No warranty or representation, expressed or implied, is made as to the accuracy of the information contained herein, and same is submitted subject to errors, omissions, change of price, rental or other conditions, withdrawal without notice, any special list conditions imposed by our Principals.